



# RAZORBACK MODELS BH4-2, BH5-2, BH6-2

## BUSH HOG®

Single Spindle Rotary Cutter

Revised 10/19

## PARTS MANUAL SECTION 104A



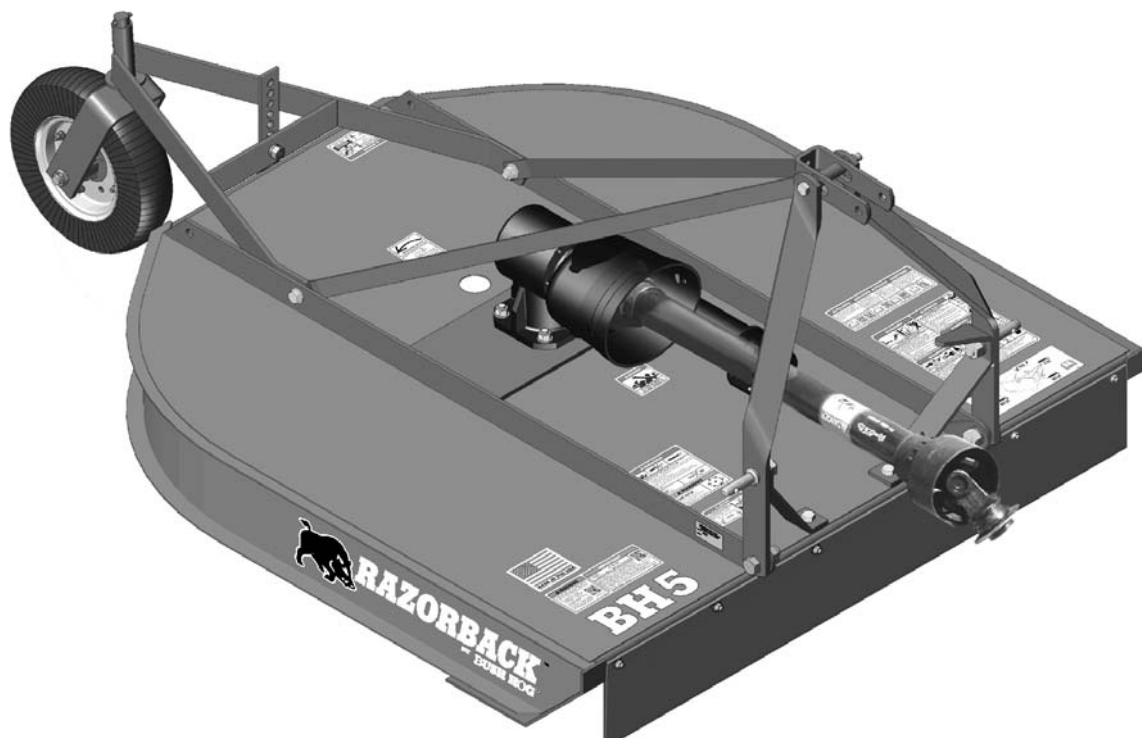
An Operator's Manual was shipped with the equipment. The Operator's Manual is an integral part of the safe operation of this machine and must be maintained with the unit at all times. **READ, UNDERSTAND, and FOLLOW** the Safety and Operation Instructions contained in this manual before operating the equipment. If the Operator's Manual is not with the equipment, contact your dealer or Bush Hog to obtain a copy before operating the equipment.

Safety Video

Important Operating and Safety Instructions are found in the Mower Safety Video that can be instantly accessed on the internet at: [www.algqr.com/bve](http://www.algqr.com/bve)



[www.algqr.com/bve](http://www.algqr.com/bve)



### BUSH HOG®

2501 Griffin Ave.  
Selma, AL 36703  
Parts Ordering 1-800-304-2836  
[www.bushhog.com](http://www.bushhog.com)

### ATENCIÓN!

LEA EL INSTRUCTIVO

Si No Lee Ingles, Pida Ayuda a Alguien  
Que Si Lo Lea Para Que le Traduzca las  
Medidas de Seguridad.



MEMBER OF THE  
ALAMO GROUP

ALWAYS ON THE CUTTING EDGE®

© 2011 Alamo Group Inc.

## PARTS ORDERING GUIDE

The following instructions are offered to help eliminate needless delay and error in processing purchase orders for the equipment in this section.

1. The Parts Section is prepared in logical sequence and grouping of parts that belong to the basic machine featured in this manual. Part Numbers and Descriptions are given to help locate the parts and quantities required.
2. The Purchase Order must include the name and address of the person or organization ordering the parts, who should be charged, and if possible, the serial number of the machine for which the parts are ordered.
3. The Purchase Order must clearly list the quantity of each part, the complete and correct part number (be sure to include all periods), and the basic name of the part.
4. The Manufacturer reserves the right to substitute parts where applicable.
5. Some parts are unlisted items which are special production items not normally stocked and are subject to special handling. Request a quotation for such parts before sending a Purchase Order.
6. The Manufacturer reserves the right to change prices without prior notice.



For maximum safety and to guarantee optimum product reliability, always use genuine BUSH HOG Parts. The use of inferior replacement parts may cause premature or catastrophic failure which could result in serious injury or death. Direct any questions regarding parts to:

**BUSH HOG**  
**2501 Griffin Ave.**  
**Selma, AL 36703**  
**[www.bushhog.com](http://www.bushhog.com)**  
**Contact Us**  
**800-304-2836**



**BUSH HOG®**

# **TABLE OF CONTENTS**

## **RAZORBACK SERIES ROTARY CUTTERS**

### **BH4-2, BH5-2, BH6-2**

<b>DESCRIPTION.....</b>	<b>PAGE NUMBER</b>
Tail Wheel Assembly (With Hub) .....	104A-1-1
Tail Wheel Assembly (Without Hub) .....	104A-1-2
Base Frame and Related Parts BH4-2 Models .....	104A-1-3
Base Frame and Related Parts BH5-2 Models .....	104A-1-5
Base Frame and Related Parts BH6-2 Models .....	104A-1-7
Lift Frame, Tail Wheel Frame and Related Parts BH4-2 Models.....	104A-1-9
Lift Frame, Tail Wheel Frame and Related Parts BH5-2 Models.....	104A-1-11
Lift Frame, Tail Wheel Frame and Related Parts BH6-2 Models.....	104A-1-13
Gearbox Assembly BH4-2 Models .....	104A-2-1
Gearbox Assembly BH5-2 Models .....	104A-2-1 & 104A-2-2
Gearbox Assembly BH6-2 Models .....	104A-2-2
Driveshaft Assy. (Slip Clutch Protected) BH4-2, BH5-2, BH6-2 Models....	104A-3-1
Driveshaft Assy. (Shear Bolt Protected) BH4-2, BH5-2, BH6-2 Models ....	104A-3-2

## LIMITED WARRANTY



Bush Hog warrants to the original purchaser of any new Bush Hog equipment, purchased from an authorized Bush Hog dealer, that the equipment be free from defects in material and workmanship for a period of one (1) year for non-commercial, state and municipalities' use and ninety (90) days for commercial use from date of retail sale. The obligation of Bush Hog to the purchaser under this warranty is limited to the repair or replacement of defective parts.

Replacement or repair parts installed in the equipment covered by this limited warranty are warranted for ninety (90) days from the date of purchase of such part or to the expiration of the applicable new equipment warranty period, whichever occurs later. Warranted parts shall be provided at no cost to the user at an authorized Bush Hog dealer during regular working hours. Bush Hog reserves the right to inspect any equipment or parts which are claimed to have been defective in material or workmanship.

### DISCLAIMER OF IMPLIED WARRANTIES & CONSEQUENTIAL DAMAGES

Bush Hog's obligation under this limited warranty, to the extent allowed by law, is in lieu of all warranties, implied or expressed, **INCLUDING IMPLIED WARRANTIES OF MERCHANTABILITY AND FITNESS FOR A PARTICULAR PURPOSE** and any liability for incidental and consequential damages with respect to the sale or use of the items warranted. Such incidental and consequential damages shall include but not be limited to: transportation charges other than normal freight charges; cost of installation other than cost approved by Bush Hog; duty; taxes; charges for normal service or adjustment; loss of crops or any other loss of income; rental of substitute equipment, expenses due to loss, damage, detention or delay in the delivery of equipment or parts resulting from acts beyond the control of Bush Hog.

### THIS LIMITED WARRANTY SHALL NOT APPLY:

1. To vendor items which carry their own warranties, such as engines, tires, and tubes.
2. If the unit has been subjected to misapplication, abuse, misuse, negligence, fire or other accident.
3. If parts not made or supplied by Bush Hog have been used in connection with the unit, if, in the sole judgement of Bush Hog such use affects its performance, stability or reliability.
4. If the unit has been altered or repaired outside of an authorized Bush Hog dealership in a manner which, in the sole judgement of Bush Hog, affects its performance, stability or reliability.
5. To normal maintenance service and normal replacement items such as gearbox lubricant, hydraulic fluid, worn blades, or to normal deterioration of such things as belts and exterior finish due to use or exposure.
6. To expendable or wear items such as teeth, chains, sprockets, belts, springs and any other items that in the company's sole judgement is a wear item.

NO EMPLOYEE OR REPRESENTATIVE OF BUSH HOG IS AUTHORIZED TO CHANGE THIS LIMITED WARRANTY IN ANY WAY OR GRANT ANY OTHER WARRANTY UNLESS SUCH CHANGE IS MADE IN WRITING AND SIGNED BY BUSH HOG'S SERVICE MANAGER, 2501 GRIFFIN AVE., SELMA, ALABAMA 36703.



Record the model number, serial number and date purchased. This information will be helpful to your dealer if parts or service are required.

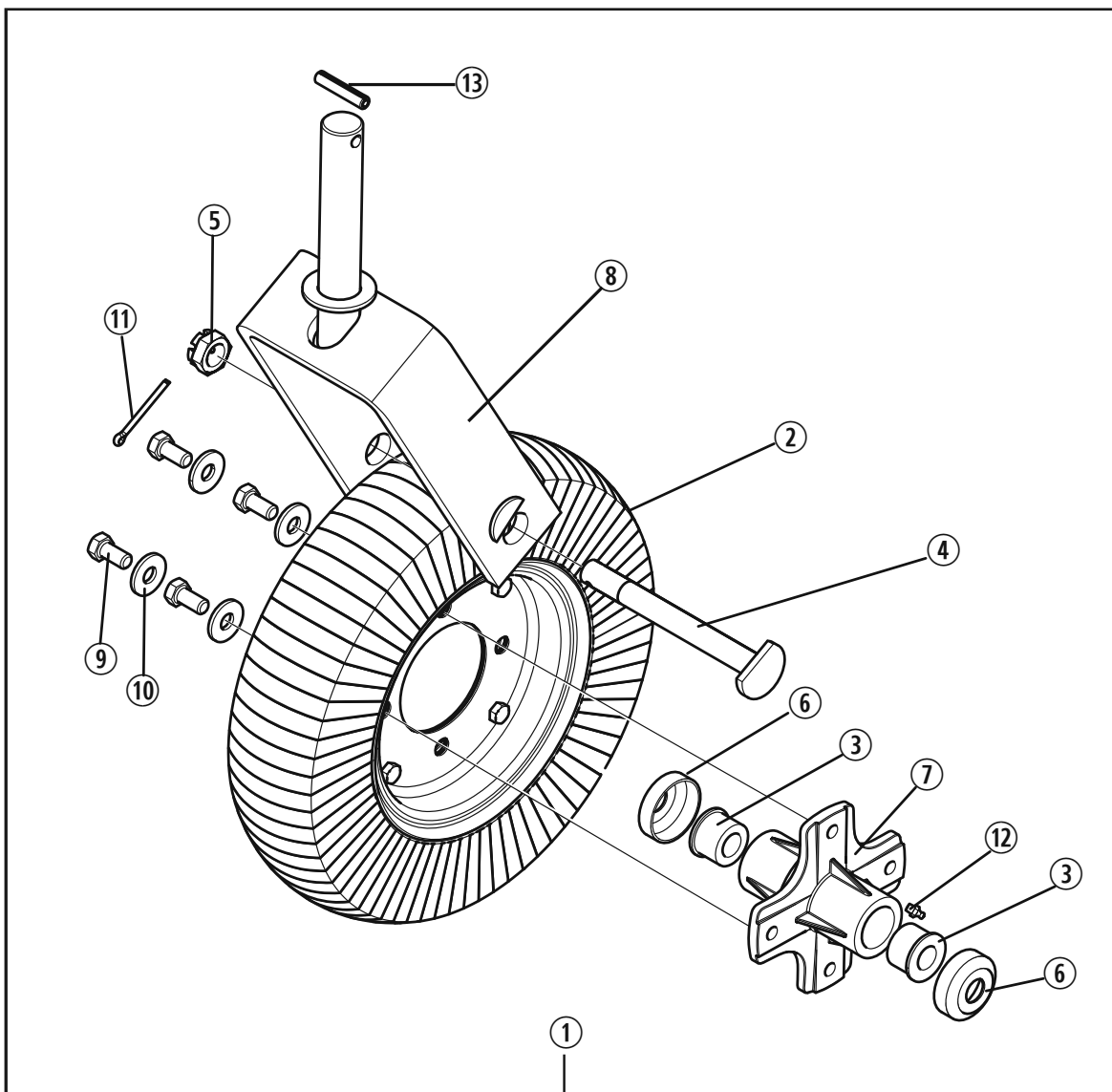
MODEL NUMBER \_\_\_\_\_

SERIAL NUMBER \_\_\_\_\_

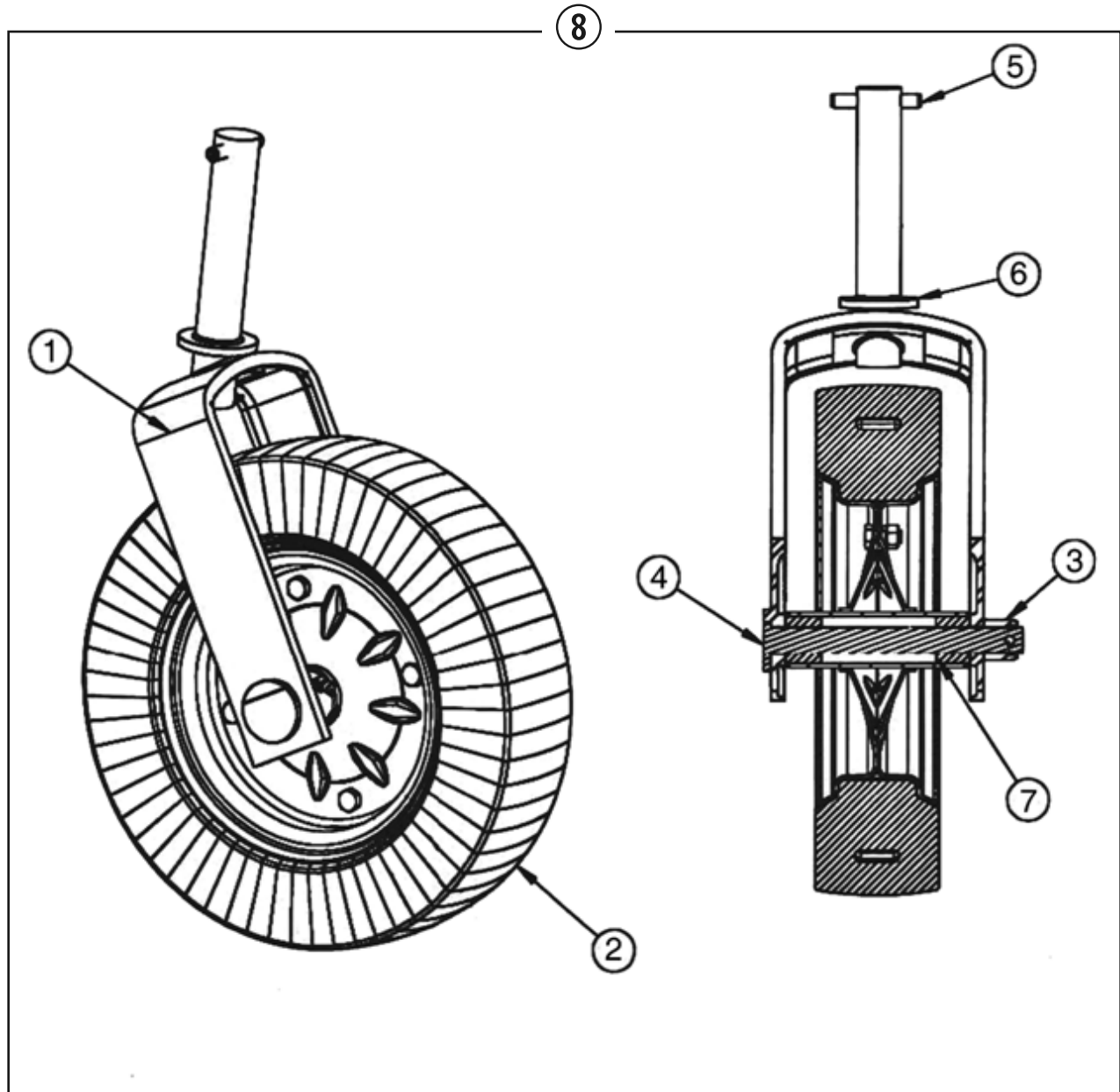
DATE OF RETAIL SALE \_\_\_\_\_

MAKE CERTAIN THE WARRANTY  
HAS BEEN FILED WITH BUSH HOG  
SELMA, ALABAMA

# **TAILWHEEL ASSEMBLY RAZORBACK SERIES MODELS BH4-2, BH5-2, BH6-2**

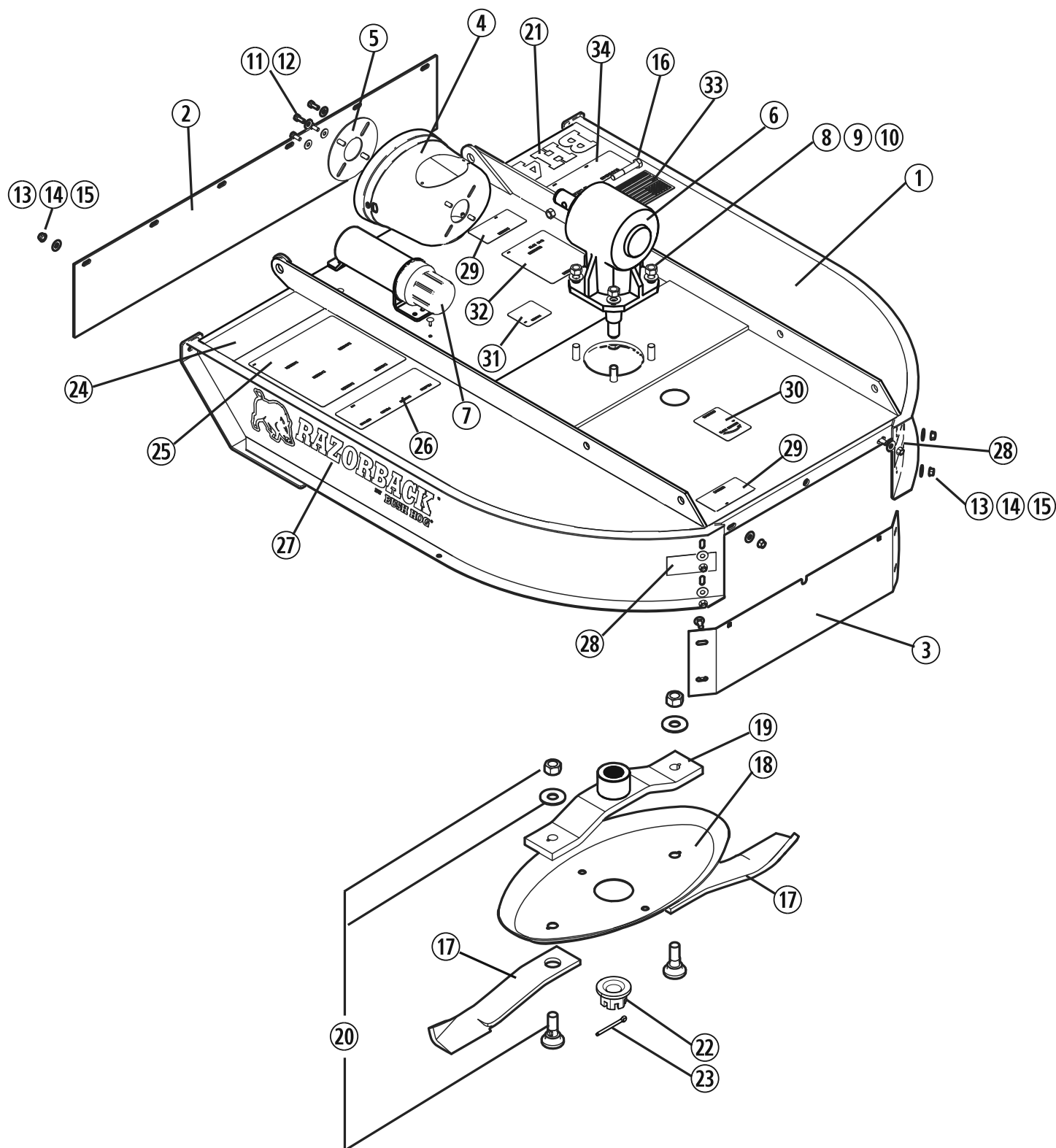


REF. NO.	PART NO.	DESCRIPTION	QTY. REQ'D.	NOTES
1	50074520	Tailwheel Assembly	1	
2	500BH	Solid Tire Assembly	1	
3	50074521	Bushing .98" x 1.39" x .99"	2	
4	50074522	Axle M24 x 2	1	
5	50074523	Slotted Nut M24 x 2	1	
6	50074524	Steel Dust Cap	2	
7	-----	Hub	1	(Order item 1)
8	-----	Fork	1	(Order item 1)
9	-----	Capscrew 1/2"	4	(Purchase Locally)
10	-----	Washer 1/2"	4	(Purchase Locally)
11	-----	Cotter Pin 4 x 40 MM	1	(Purchase Locally)
12	-----	Grease Fitting	1	(Purchase Locally)
13	20327	Roll Pin 3/8" x 2-1/2"	1	



REF. NO.	PART NO.	DESCRIPTION	QTY.
1	50076499	Fork	1
2	50076500	Wheel and Tire Assy.	1
3	45189BH	Locknut 3/4" NF	1
4	50076502	Bolt, Flathead	1
5	50076503	Roll Pin m10 x 63	1
6	50076504	Yoke Washer	1
7	50076505	Bushing, Sintered	2
8	50076498	Tailwheel Assenbly	1

# **BASE FRAME AND RELATED PARTS RAZORBACK SERIES MODEL BH4-2**

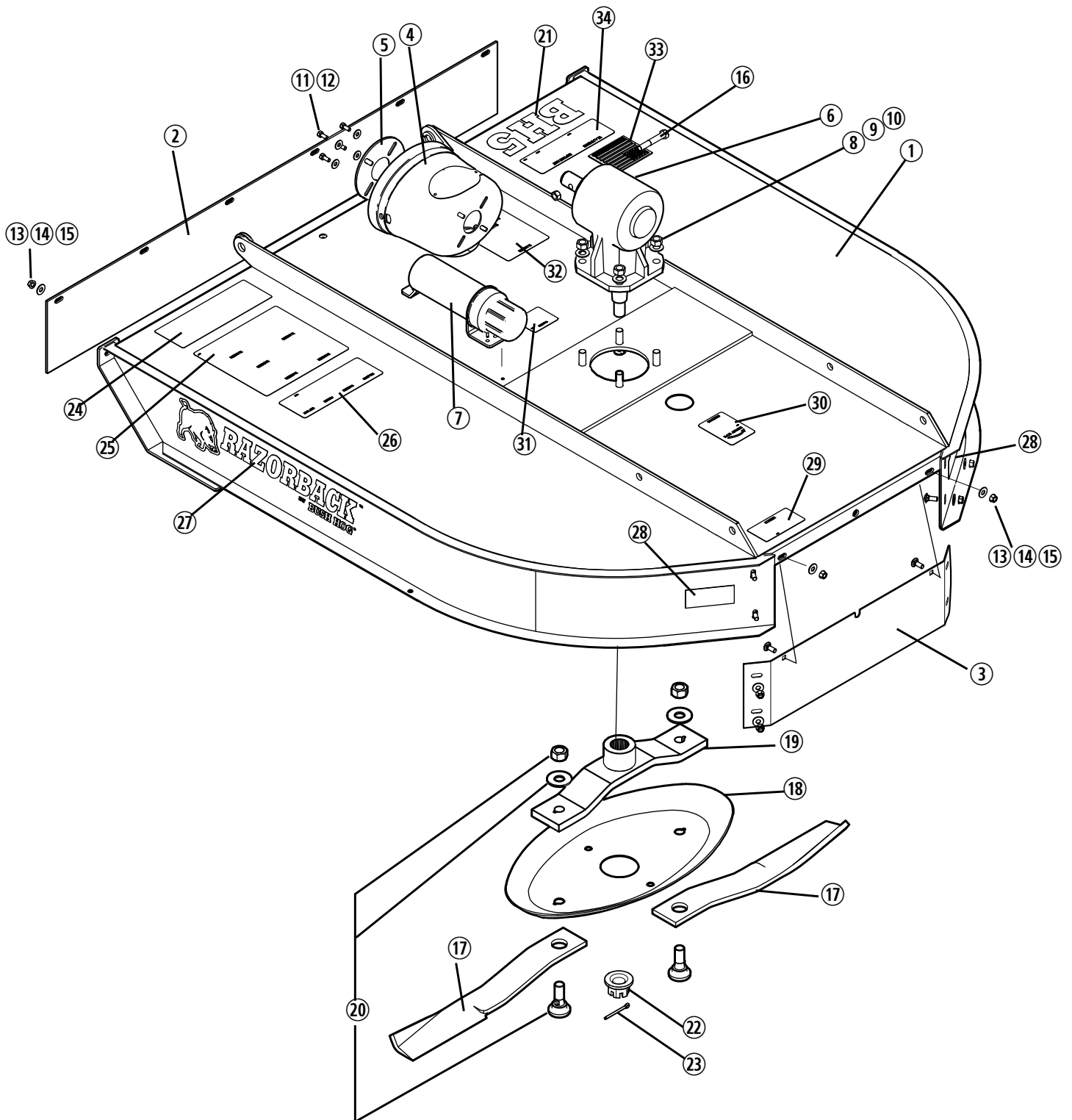


**BASE FRAME AND RELATED PARTS  
RAZORBACK SERIES  
MODEL BH4-2**

REF. NO.	PART NO.	DESCRIPTION	QTY. REQ'D.	NOTES
1	50074651-10	Deck (B H Red) w/Decals	1	
	50074651-16	Deck (Green) w/Decals	1	
	50074651-23	Deck (Orange) w/Decals	1	
	50074651-28	Deck (Blue) w/Decals	1	
2	50074626	Belting, Front 4'	1	
3	50074625	Band, Rear	1	
4	50075248	Shield Shield	1	For Shear Bolt Protected Drivelines
	81592	Safety Shield	1	For Slip Clutch Protected Drivelines
5	-----	Support, Inner Shield	1	No longer Req'd. w/50075248 Shield
6	50075165	Gearbox Assembly	1	
7	50035829	Tube, Owners Manual	1	
8	20947	Capscrew 5/8" x 2" Gr.5	4	
9	20748	Flatwasher 5/8" SAE	8	
10	15598BH	Locknut 5/8"	4	
11	1161006	Capscrew 5/16" x 3/4" x Gr.5	4	
12	15907BH	Flatwasher 5/16"	4	
13	44109BH	Carriage Bolt 3/8" x 1" Gr.5	12	
14	15583	Locknut 3/8", Flanged	12	
15	15915BH	Flatwasher 3/8"	12	
16	50074654	Shear Bolt Package	1	Contains 5 Bolts & Nuts
17	50074580	Blade 1/2" x 3" x 14-3/4"	2	Uplift CCW Rotation
18	50074519	Pan, Blade Holder	1	
19	50074635	Bar, Blade Holder	1	
20	00786548	Blade Bolt Kit	1	
	00781320	Blade Bolt 7/8"	2	
	00761535	Washer 7/8"	2	
	00750226	Locknut, Toplock 7/8" NF	2	
21	50074632	Model Decal BH4-2	1	
22	88873	Slotted Nut, 1" -14UNC	1	
23	81648	Cotter Pin	1	
	50074690	Decal Kit	1	Items 24-35
24	D590	Decal, Lubrication	1	
25	D549	Decal, Danger Operation	1	
26	D813	Decal, Danger Multilignual	1	
27	50074689	Decal, Razorback Logo	2	
28	50031213	Decal, Red Reflector	2	
29	D614	Decal, Thrown Object	2	
30	D551	Decal, Rotation CCW	1	
31	D546	Decal, Danger Guard Missing	1	
32	D547	Decal, Danger	1	
33	50074259	Decal, Flag	1	
34	D559	Decal, Genuine Bush Hog	1	



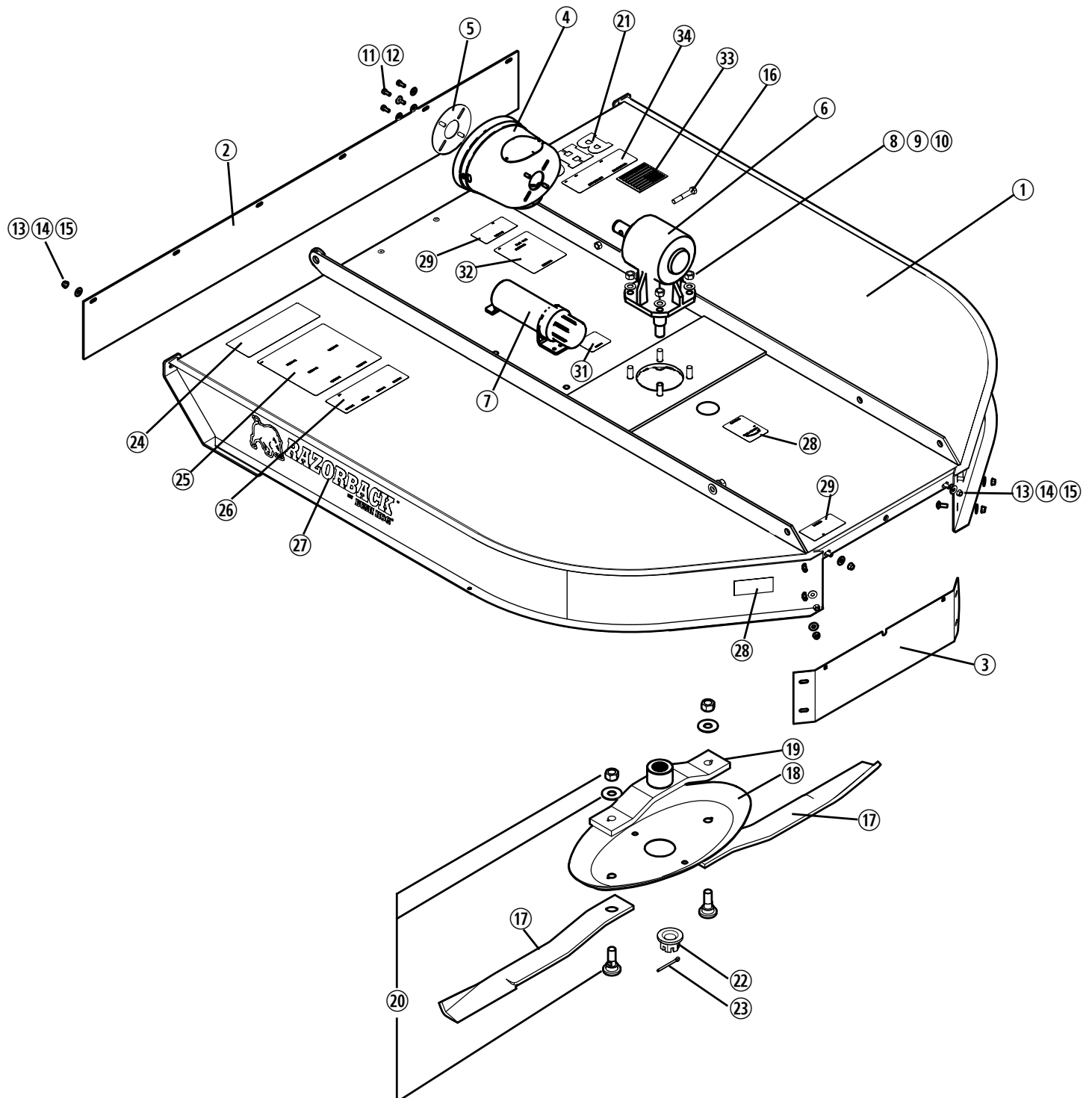
# **BASE FRAME AND RELATED PARTS RAZORBACK SERIES MODEL BH5-2**



**BASE FRAME AND RELATED PARTS  
RAZORBACK SERIES  
MODEL BH5-2**

REF. NO.	PART NO.	DESCRIPTION	QTY. REQ'D.	NOTES
1	50074652-10	Deck (B H Red) w/Decals	1	
	50074652-16	Deck (Green) w/Decals	1	
	50074652-23	Deck (Orange) w/Decals	1	
	50074652-28	Deck (Blue) w/Decals	1	
2	50074627	Belting, Front 5'	1	
3	50074625	Band, Rear	1	
4	50075248	Shield Shield	1	For Shear Bolt Protected Drivelines
	81592	Safety Shield	1	For Slip Clutch Protected Drivelines
5	-----	Support, Inner Shield	1	No longer Req'd. w/50075248 Shield
6	50074339	Geabox Assembly	1	
7	50035829	Tube, Owners Manual	1	
8	20947	Capscrew 5/8" x 2" Gr.5	4	
9	20748	Flatwasher 5/8" SAE	8	
10	15598BH	Locknut 5/8"	4	
11	1161006	Capscrew 5/16" x 3/4" x Gr.5	4	
12	15907BH	Flatwasher 5/16"	4	
13	44109BH	Carriage Bolt 3/8" x 1" Gr.5	12	
14	15583	Locknut 3/8", Flanged	12	
15	15915BH	Flatwasher 3/8"	12	
16	50074654	Shear Bolt Package	1	Contains 5 Bolts & Nuts
17	50074581	Blade 1/2" x 3" x 20-3/4"	2	Uplift CCW Rotation
18	50074519	Pan, Blade Holder	1	
19	50074635	Bar, Blade Holder	1	
20	00786548	Blade Bolt Kit	1	
	00781320	Blade Bolt 7/8"	2	
	00761535	Washer 7/8"	2	
	00750226	Locknut, Toplock 7/8" NF	2	
21	50074633	Model Decal BH5-2	1	
22	88873	Slotted Nut, 1" -14UNC	1	
23	81648	Cotter Pin	1	
	50074690	Decal Kit	1	Items 24-35
24	D590	Decal, Lubrication	1	
25	D549	Decal, Danger Operation	1	
26	D813	Decal, Danger Multilignual	1	
27	50074689	Decal, Razorback Logo	2	
28	50031213	Decal, Red Reflector	2	
29	D614	Decal, Thrown Object	2	
30	D551	Decal, Rotation CCW	1	
31	D546	Decal, Danger Guard Missing	1	
32	D547	Decal, Danger	1	
33	50074259	Decal, Flag	1	
34	D559	Decal, Genuine Bush Hog	1	

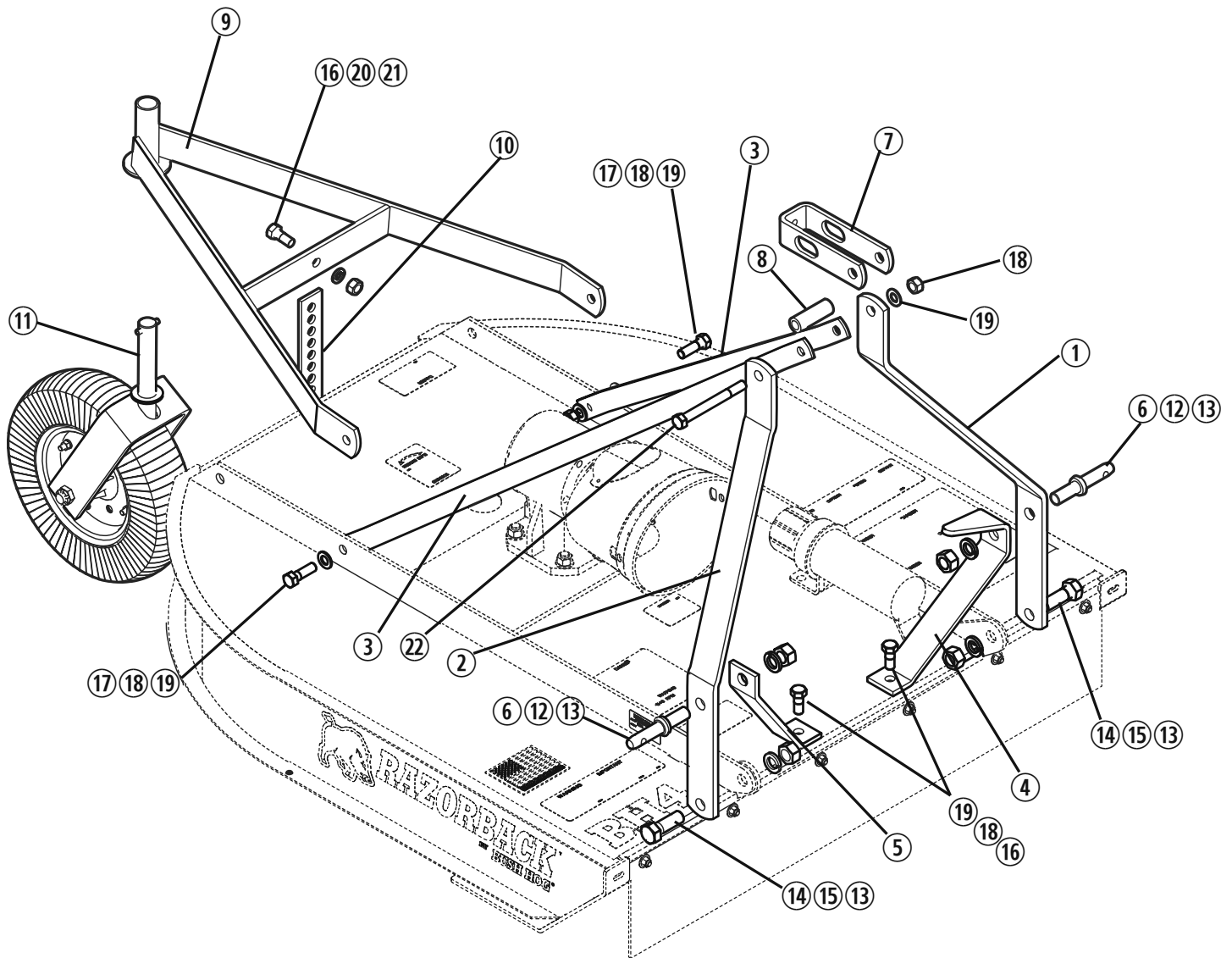
# **BASE FRAME AND RELATED PARTS RAZORBACK SERIES MODEL BH6-2**



**BASE FRAME AND RELATED PARTS  
RAZORBACK SERIES  
MODEL BH6-2**

REF. NO.	PART NO.	DESCRIPTION	QTY. REQ'D.	NOTES
1	50074653-10	Deck (B H Red) w/Decals	1	
	50074653-16	Deck (Green) w/Decals	1	
	50074653-23	Deck (Orange) w/Decals	1	
	50074653-28	Deck (Blue) w/Decals	1	
2	50074628	Belting, Front 6'	1	
3	50074625	Band, Rear	1	
4	50075248	Shield Shield	1	For Shear Bolt Protected Drivelines
	81592	Safety Shield	1	For Slip Clutch Protected Drivelines
5	-----	Support, Inner Shield	1	No longer Req'd. w/50075248 Shield
6	00786192	Gearbox Assembly	1	
7	50035829	Tube, Owners Manual	1	
8	20947	Capscrew 5/8" x 2" Gr.5	4	
9	20748	Flatwasher 5/8" SAE	8	
10	15598BH	Locknut 5/8"	4	
11	1161006	Capscrew 5/16" x 3/4" x Gr.5	4	
12	15907BH	Flatwasher 5/16"	4	
13	44109BH	Carriage Bolt 3/8" x 1" Gr.5	12	
14	15583	Locknut 3/8", Flanged	12	
15	15915BH	Flatwasher 3/8"	12	
16	50074654	Shear Bolt Package	1	Contains 5 Bolts & Nuts
17	50074582	Blade 1/2" x 3" x 26-3/4"	2	Uplift CCW Rotation
18	50074519	Pan, Blade Holder	1	
19	50074635	Bar, Blade Holder	1	
20	00786548	Blade Bolt Kit	1	
	00781320	Blade Bolt 7/8"	2	
	00761535	Washer 7/8"	2	
	00750226	Locknut, Toplock 7/8" NF	2	
21	50074634	Model Decal BH6-2	1	
22	88873	Slotted Nut, 1" -14UNC	1	
23	81648	Cotter Pin	1	
	50074690	Decal Kit	1	Items 24-35
24	D590	Decal, Lubrication	1	
25	D549	Decal, Danger Operation	1	
26	D813	Decal, Danger Multilignual	1	
27	50074689	Decal, Razorback Logo	2	
28	50031213	Decal, Red Reflector	2	
29	D614	Decal, Thrown Object	2	
30	D551	Decal, Rotation CCW	1	
31	D546	Decal, Danger Guard Missing	1	
32	D547	Decal, Danger	1	
33	50074259	Decal, Flag	1	
34	D559	Decal, Genuine Bush Hog	1	

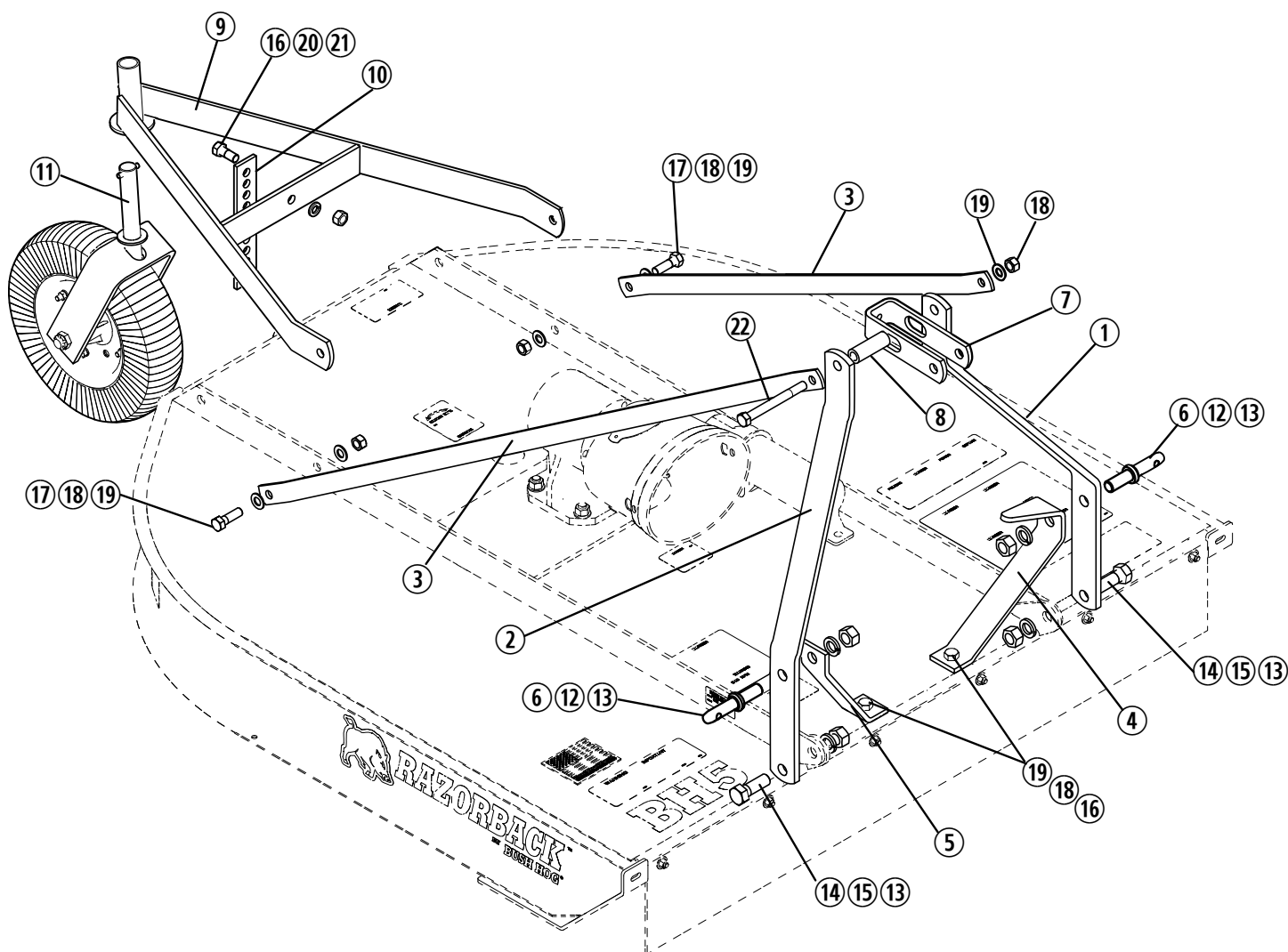
# **LIFT FRAME, TAILWHEEL FRAME and RELATED PARTS** **RAZORBACK SERIES** **MODEL BH4-2**



**LIFT FRAME, TAILWHEEL FRAME and RELATED PARTS  
RAZORBACK SERIES  
MODEL BH4-2**

REF. NO.	PART NO.	DESCRIPTION	QTY. REQ'D.	NOTES
1	50075075	Strut, "A" Frame LH	1	
2	50075074	Strut, "A" Frame RH	1	
3	50074613	Yoke	2	
4	50074657	Brace, LH Strut	1	
5	50074658	Brace, RH Strut	1	
6	63765	Lift Pin (Cat. I)	2	
7	64114	Flex Link (Cat I)	1	
8	64113	Pivot Tube	1	
9	50074636	Tailwheel Frame Weldment	1	
10	81396	Link, Tailwheel	1	
11	50074520	Tailwheel Assembly	1	(See Tailwheel Assy.)
12	44061BH	Hex Nut 7/8" NF	2	
13	15824	Lockwasher 7/8"	4	
14	20104BH	Capscrew 7/8" x 2-1/2" Gr.5	2	
15	19503	Hex Nut 7/8"	4	
16	20501	Capscrew 5/8" x 1-1/2"	4	
17	20947	Capscrew 5/8" x 2" Gr.5	2	
18	15598BH	Locknut 5/8"	2	
19	20748	Flatwasher 5/8" SAE	7	
20	15563	Hex Nut 5/8"	2	
21	19486	Lockwasher 5/8"	2	
22	20923	Capscrew 5/8" x 6" Gr. 5	1	

# **LIFT FRAME, TAILWHEEL FRAME and RELATED PARTS** **RAZORBACK SERIES** **MODEL BH5-2**

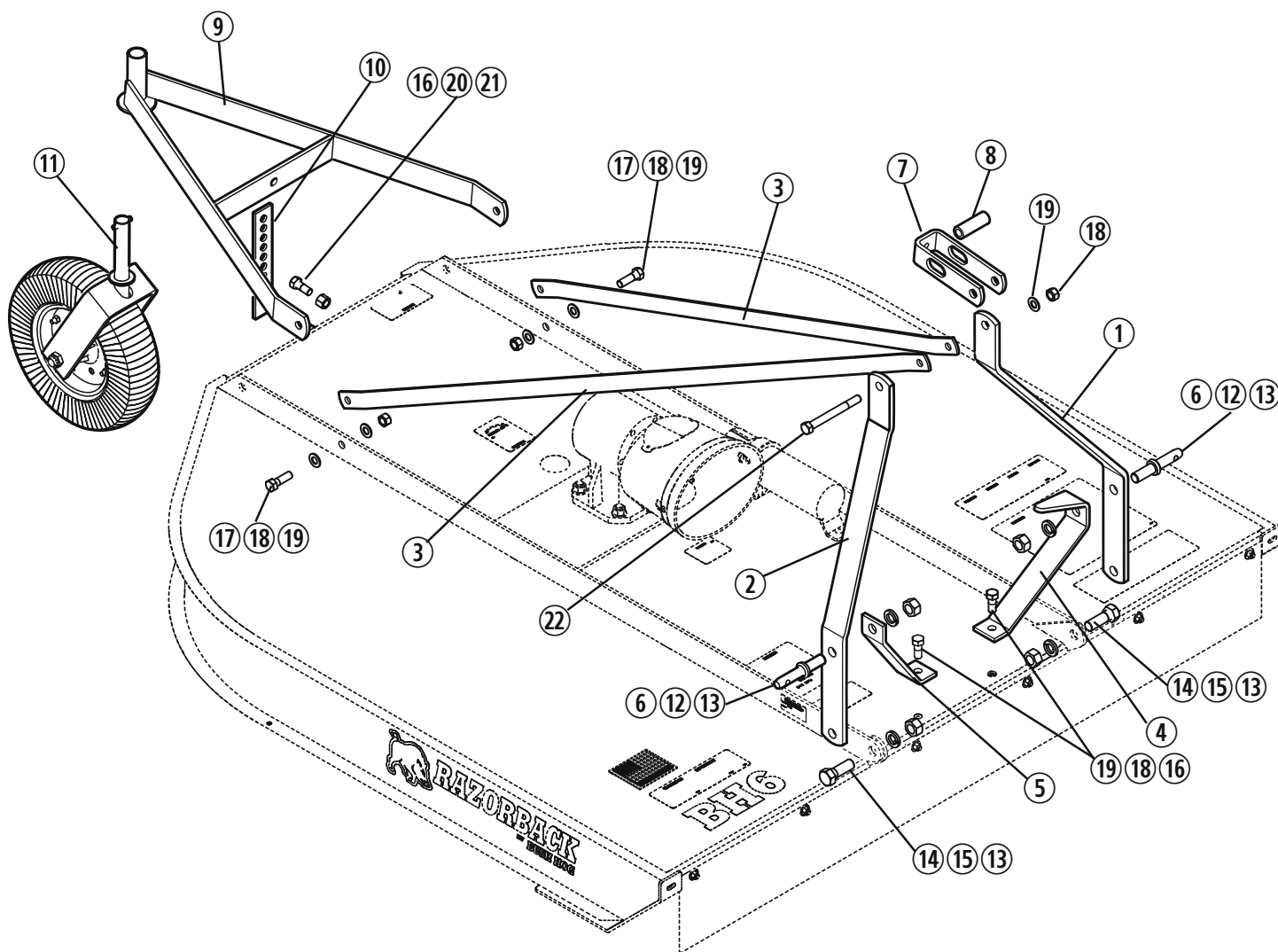


**LIFT FRAME, TAILWHEEL FRAME and RELATED PARTS  
RAZORBACK SERIES  
MODEL BH5-2**

REF. NO.	PART NO.	DESCRIPTION	QTY. REQ'D.	NOTES
1	50075075	Strut, "A" Frame LH	1	
2	50075074	Strut, "A" Frame RH	1	
3	50074607	Yoke	2	
4	50074657	Brace, LH Strut	1	
5	50074658	Brace, RH Strut	1	
6	63765	Lift Pin (Cat. I)	2	
7	64114	Flex Link (Cat I)	1	
8	64113	Pivot Tube	1	
9	50074636	Tailwheel Frame Weldment	1	
10	81396	Link, Tailwheel	1	
11	50074520	Tailwheel Assembly	1	(See Tailwheel Assy.)
12	44061BH	Hex Nut 7/8" NF	2	
13	15824	Lockwasher 7/8"	4	
14	20104BH	Capscrew 7/8" x 2-1/2" Gr.5	2	
15	19503	Hex Nut 7/8"	4	
16	20501	Capscrew 5/8" x 1-1/2"	4	
17	20947	Capscrew 5/8" x 2" Gr.5	2	
18	15598BH	Locknut 5/8"	2	
19	20748	Flatwasher 5/8" SAE	7	
20	15563	Hex Nut 5/8"	2	
21	19486	Lockwasher 5/8"	2	
22	20923	Capscrew 5/8" x 6" Gr. 5	1	



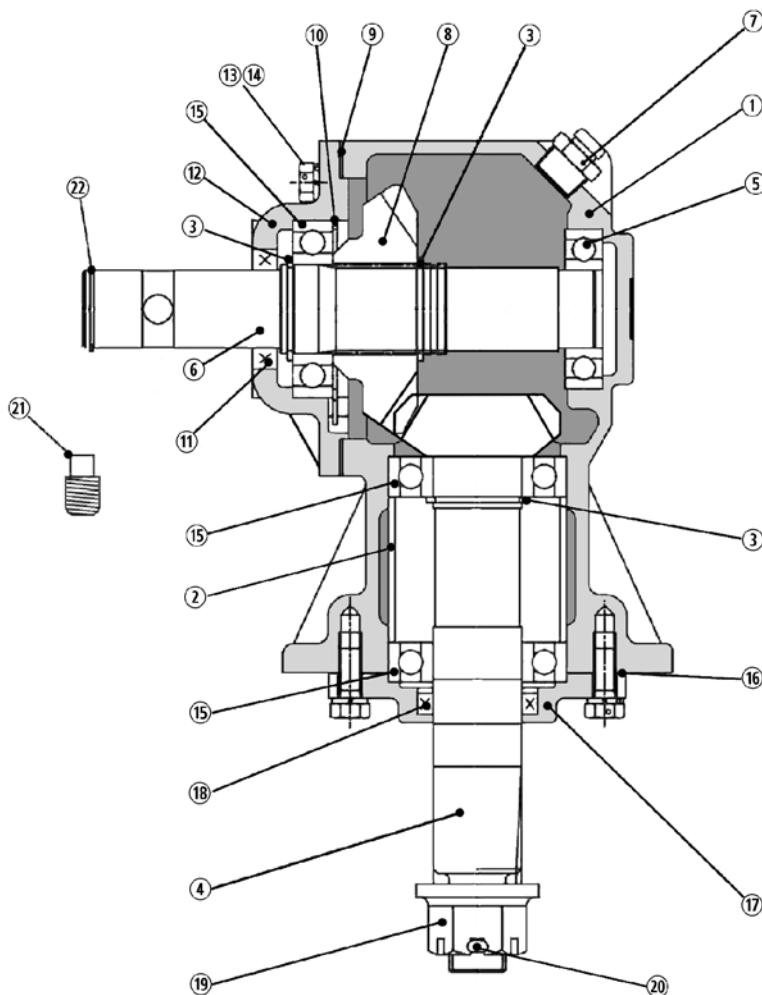
# **LIFT FRAME, TAILWHEEL FRAME and RELATED PARTS** **RAZORBACK SERIES** **MODEL BH6-2**



**LIFT FRAME, TAILWHEEL FRAME and RELATED PARTS  
RAZORBACK SERIES  
MODEL BH6-2**

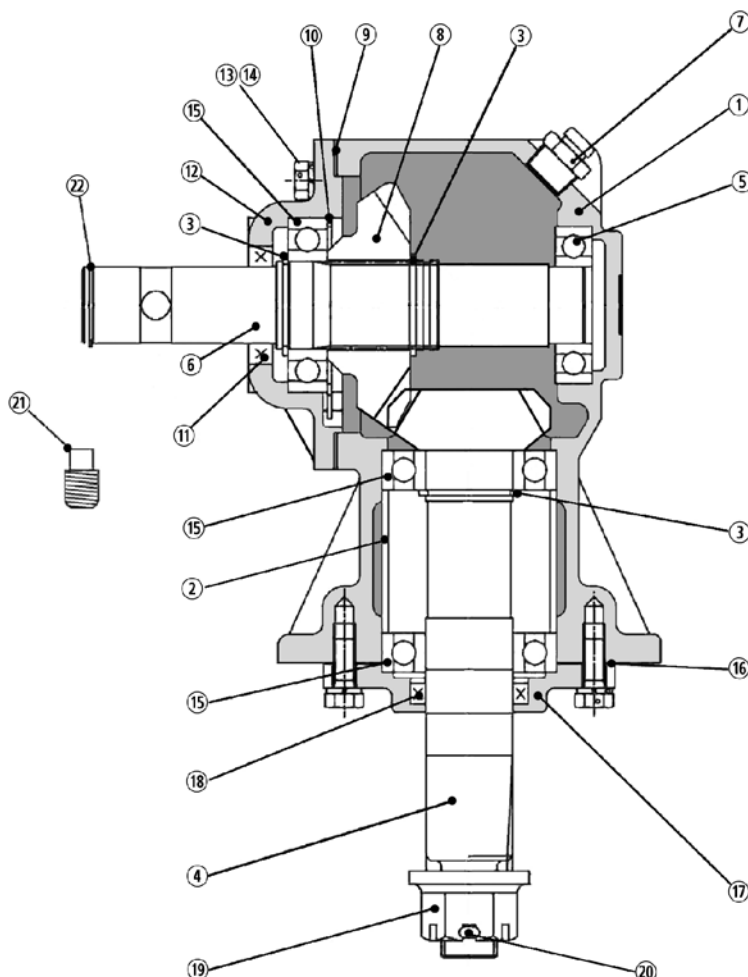
REF. NO.	PART NO.	DESCRIPTION	QTY. REQ'D.	NOTES
1	50075075	Strut, "A" Frame LH	1	
2	50075074	Strut, "A" Frame RH	1	
3	50074619	Yoke	2	
4	50074657	Brace, LH Strut	1	
5	50074658	Brace, RH Strut	1	
6	63765	Lift Pin (Cat. I)	2	
7	64114	Flex Link (Cat I)	1	
8	64113	Pivot Tube	1	
9	50074636	Tailwheel Frame Weldment	1	
10	81396	Link, Tailwheel	1	
11	50074520	Tailwheel Assembly	1	(See Tailwheel Assy.)
12	44061BH	Hex Nut 7/8" NF	2	
13	15824	Lockwasher 7/8"	4	
14	20104BH	Capscrew 7/8" x 2-1/2" Gr.5	2	
15	19503	Hex Nut 7/8"	4	
16	20501	Capscrew 5/8" x 1-1/2"	4	
17	20947	Capscrew 5/8" x 2" Gr.5	2	
18	15598BH	Locknut 5/8"	2	
19	20748	Flatwasher 5/8" SAE	7	
20	15563	Hex Nut 5/8"	2	
21	19486	Lockwasher 5/8"	2	
22	20923	Capscrew 5/8" x 6" Gr. 5	1	

# **GEARBOX ASSEMBLY RAZORBACK SERIES MODEL BH4-2**



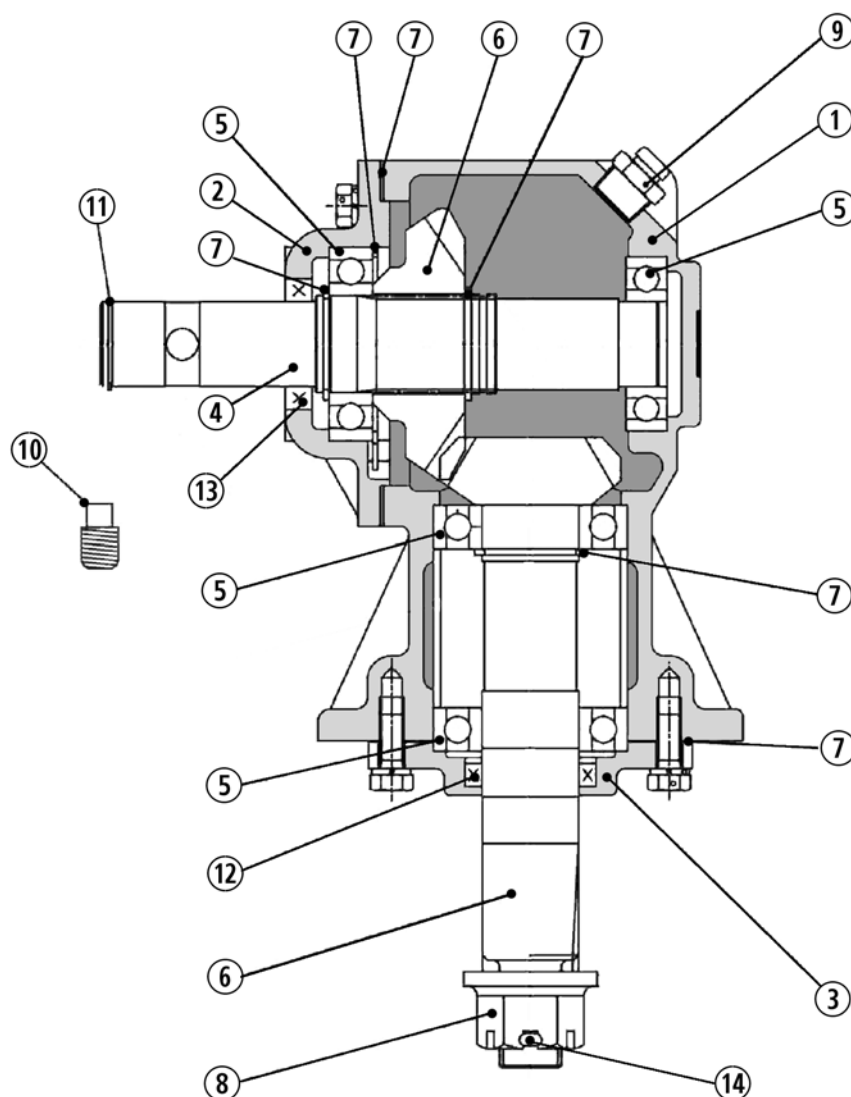
REF. NO.	PART NO.	DESCRIPTION	QTY. REQ'D.	NOTES
	50075165	Gearbox Assembly	1	
1	N/A	Housing	1	
2	81630	Spacer	1	
3	81631	Retaining Ring	3	
4	50075908	Pinion	1	
5	70229	Bearing Assy.	1	
6	81634	Shaft, Input	1	
7	88851	Plug, Pressure Relief	1	
8	50075892	Gear, Input	1	
9	50052055	Shim, .50mm	1	
	50052053	Shim, .15mm	1	
	50052054	Shim, .30mm	1	
10	81637	Retaining Ring	1	
11	88879	Seal	1	
12	50029491	Cap	1	
13	20034	Capscrew 3/8" x 1' Gr.5	10	
14	15812	Lockwasher 3/8"	10	
15	70256	Bearing Assy.	3	
16	50077196	Gasket, Y3034 Bottom, T=0.2MM	1	
	50077197	Gasket, Y3034 Bottom, T=0.3MM	1	
	50052056	Gasket, .15mm	1	
	50052057	Gasket, .30mm	1	
17	81643	Cap	1	
18	81644	Seal	1	
19	88873	Hex Nut, Slotted 1"	1	
20	81648	Cotter Pin	1	
21	69BH	Pipe Plug	1	
22	81445	Snap Ring, Driveline Retainer	1	

# **GEARBOX ASSEMBLY RAZORBACK SERIES MODEL BH5-2**



REF. NO.	PART NO.	DESCRIPTION	QTY. REQ'D.	NOTES
	50074339	Gearbox Assembly	1	
1	N/A	Housing	1	
2	81630	Spacer	1	
3	81631	Retaining Ring	3	
4	50074340	Pinion	1	
5	70229	Bearing Assy.	1	
6	81634	Shaft, Input	1	
7	88851	Plug, Pressure Relief	1	
8	50074341	Gear, Input 22 Teeth	1	
9	50052055	Shim, .50mm	1	
	50052053	Shim, .15mm	1	
	50052054	Shim, .30mm	1	
10	81637	Retaining Ring	1	
11	88879	Seal	1	
12	50029491	Cap	1	
13	20034	Capscrew 3/8" x 1' Gr.5	10	
14	15812	Lockwasher 3/8"	10	
15	70256	Bearing Assy.	3	
16	50077196	Gasket, Y3034 Bottom, T=0.2MM	1	
	50077197	Gasket, Y3034 Bottom, T=0.3MM	1	
	50052056	Gasket, .15mm	1	
	50052057	Gasket, .30mm	1	
17	81643	Cap	1	
18	81644	Seal	1	
19	88873	Hex Nut, Slotted 1"	1	
20	81648	Cotter Pin	1	
21	69BH	Pipe Plug	1	
22	81445	Snap Ring, Driveline Retainer	1	

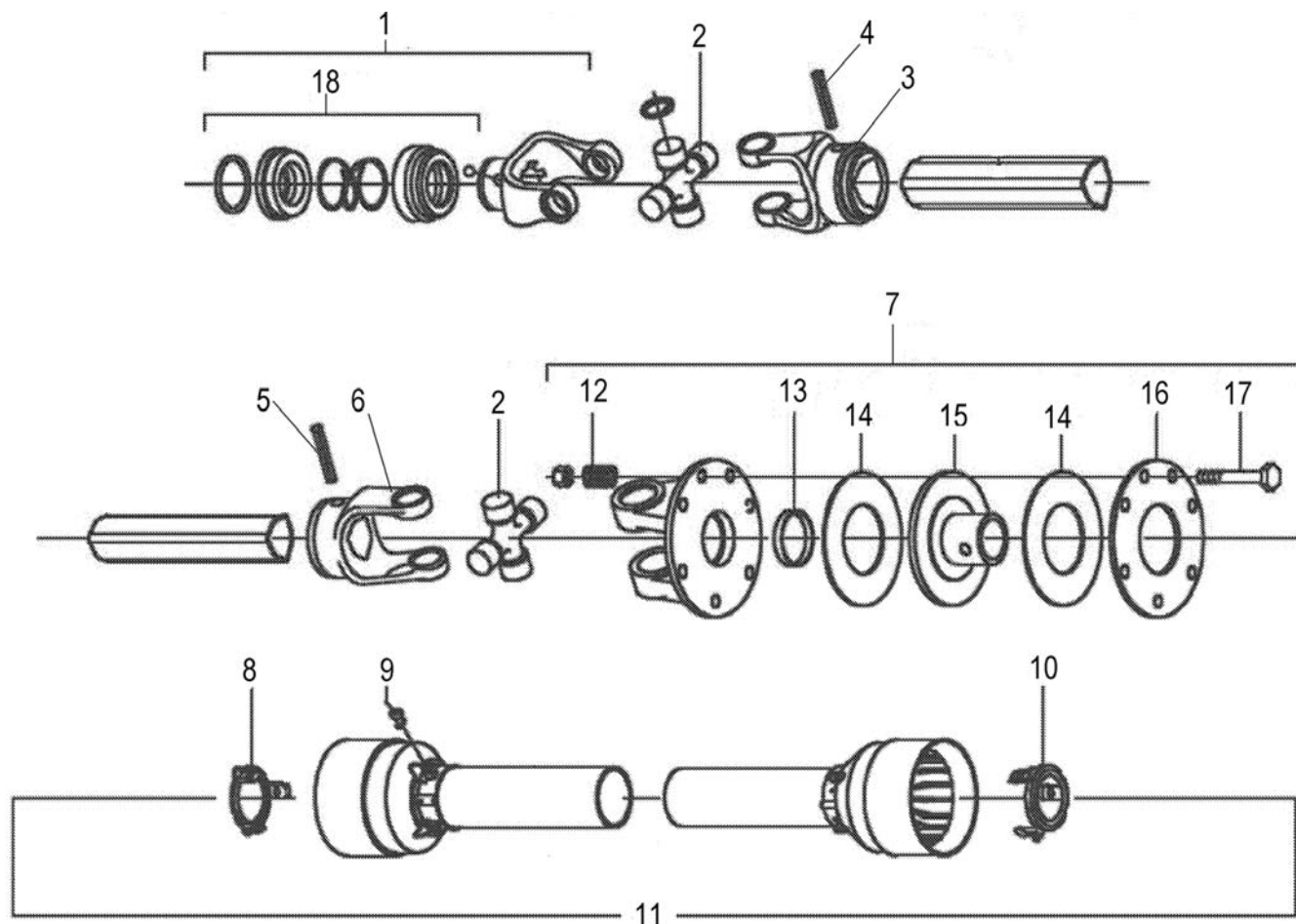
# **GEARBOX ASSEMBLY RAZORBACK SERIES MODEL BH6-2**



REF. NO.	PART NO.	DESCRIPTION	QTY. REQ'D.	NOTES
	00786192	Gearbox Assembly	1	
1	N/A	Housing	1	
2	0656220003	Cover, Input	1	
3	00757683	Cover, Output	1	
4	00564700	Shaft, Input	1	
5	00786196	Kit, Roller Bearing	1	
6	00786197	Kit, Bevel Gear	1	
7	00786198	Kit, Shim	1	
8	00758692	Nut, Slotted Flange	1	
9	88851	Plug, Vent 1/2"	1	
10	00565000	Plug, Solid 1/8"	1	
11	7192	Snap Ring, Driveshaft Retainer	1	
12	00786214	Seal, Bottom 40 x 54 x 9.5	1	
13	00786213	Seal, Top 34.9 x 54 x 11	1	
14	81648	Cotter Pin	1	

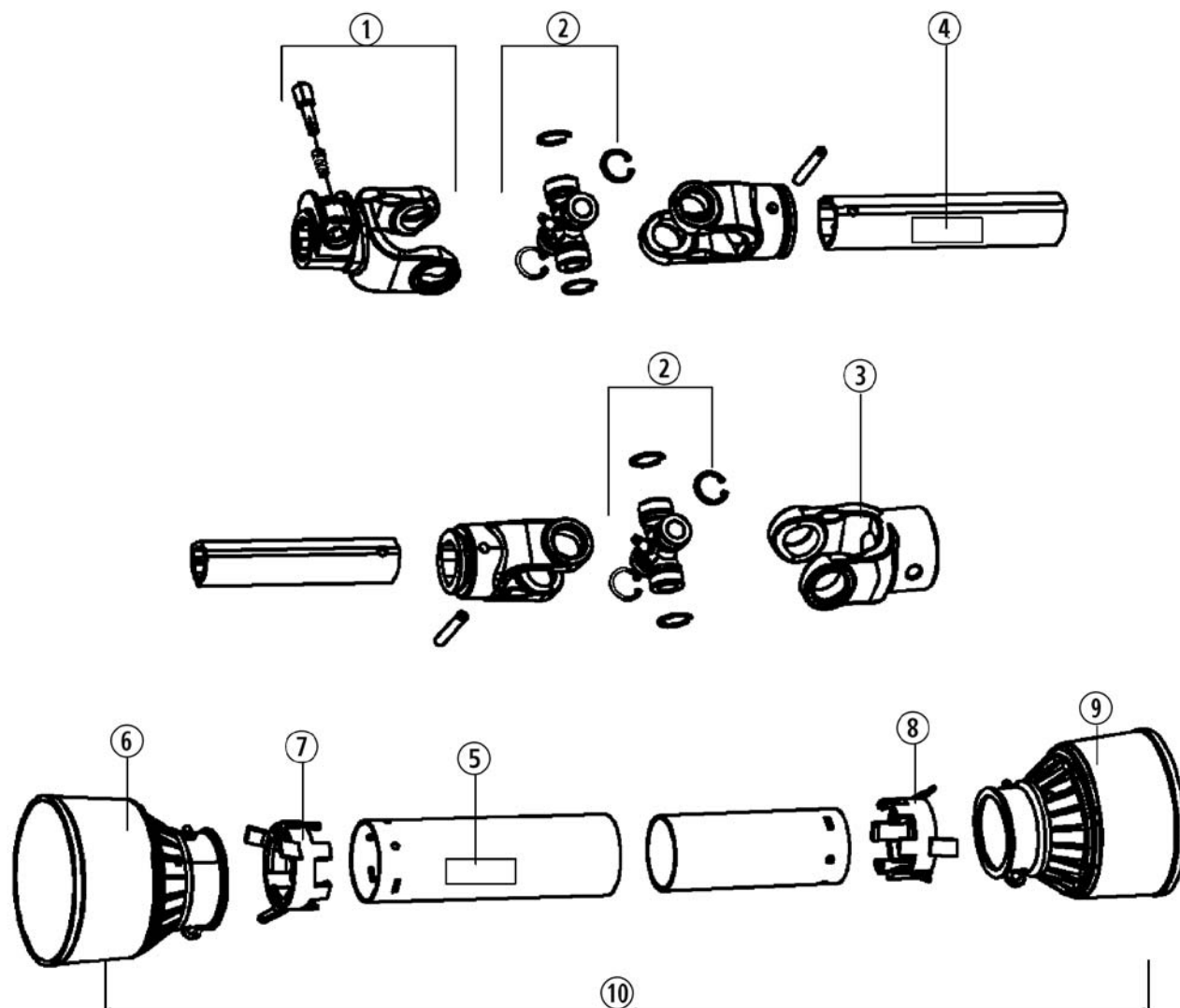


**SLIP CLUTCH DRIVESHAFT ASSEMBLY  
MFD. BY BONDIOLI AND PAVESI  
RAZORBACK SERIES  
MODELS BH4-2, BH5-2, BH6-2**



Ref. No.	Part No.	Description	Qty. Req'd.	Notes
	<b>00759318CBH</b>	<b>Driveshaft Assembly Complete</b>	<b>1</b>	BH4-2 & BH5-2
	<b>50076549</b>	<b>Driveshaft Assembly Complete</b>	<b>1</b>	BH6-2
1	76711	Complete Collar Yoke	1	
2	64694	Cross & Bearing Kit	2	
3	50064182	Outer Yoke	1	
4	78577	Roll Pin For Outer Yoke	1	
5	78578	Roll Pin For Inner Yoke	1	
6	50064184	Inner Yoke	1	
7	00773087	Clutch Assy - 1-3/8 Bore	1	
8	50053143	Guard Retaining Collar For Out	1	
9	50056404	Bolt	6	
10	50053144	Guard Retaining Collar For Inn	1	
11	00768342	Shield Assy, Complete	1	BH4-2 & BH5-2 (For 00759318CBH) BH6-2 (For 50076549)
	00785576	Shield Assy, Complete	1	
12	76080	Spring	8	
13	76195	Bush	1	
14	76194	Clutch Pad	2	
15	00789234	Hub, Special Clutch -1-3/8 Bore	1	
16	76196	Pressure Plate	1	
17	00754316	Bolt W/Elastic Tln - M10 X 80	8	
18	50017480	Ball Collar Kit 1 3/8	1	

# **SHEAR BOLT DRIVESHAFT ASSEMBLY RAZORBACK SERIES MODELS BH4-2, BH5-2, BH6-2**



REF. NO.	PART NO.	DESCRIPTION	QTY. REQ'D.	NOTES
	50074691	Driveline Assy.	1	Used On BH5-2, BH6-2 Models
	50074692	Driveline Assy.	1	Used On BH4-2 Models
1	50075056	Push Pin Yoke Assy	1	
2	50074282	Cross Bearing Kit	2	
3	50075057	Yoke, Plain Bore	1	Shear Bolt Protection
	50074654	Shear Bolt Package	1	Contains 5 Bolts and 5 Locknuts
4	78786	Safety Decal, Inner	1	
5	78608	Safety Decal, Outer	1	
6	-----	Outer Shield Cone	1	
7	-----	Outer Shield Bearing	1	
8	-----	Inner Shield Bearing	1	
9	-----	Inner Shield Cone	1	
10	50075058	Complete Shield Kit	1	Used On BH5-2, BH6-2 Models
	50075059	Complete Shield Kit	1	Used On BH4-2 Models







**BUSH HOG<sup>®</sup>**

2501 GRIFFIN AVE. • SELMA, AL 36703  
[WWW.BUSHHOG.COM](http://WWW.BUSHHOG.COM)