

# Construction & Landscape Implements



**BUSH HOG®**

IF IT DOESN'T SAY  
**BUSH HOG®**  
IT JUST WON'T CUT IT™









# TABLE OF CONTENTS



**IF IT DOESN'T SAY BUSH HOG®, IT JUST WON'T CUT IT.™**



## CONSTRUCTION IMPLEMENTS

Pull Dirt Scrapers .....	4
Post Hole Diggers .....	6
Hydraulic Post Hole Diggers .....	8
Backhoes .....	10
Grapples .....	13
Log Grapples .....	16
Pallet Forks .....	18



CONSTRUCTION



## LANDSCAPE IMPLEMENTS

<b>Compact Implements</b> ( <i>Aerators, Rear Blades, Box Blades, Tillers, Road Graders, Landscape Rakes, Pluggers</i> ) .....	20
Rear-Mounted Blades .....	22
Box Blades .....	26
Road Graders .....	30
Landscape Rakes .....	34
Pulverizers .....	35
Pluggers .....	36
Fertilizer and Seed Spreaders .....	37
Manure Spreaders .....	38
Log Splitters .....	41
Wood Chippers .....	43



LANDSCAPE



# PULL DIRT SCRAPERS

DSP  
SERIES

DSP8 / DSP8 / DSP12

CONSTRUCTION



Bush Hog®'s new DSP Line of Pull-Type Drag Scrapers, with standard fixed axle or optional tilt axle, is ideal for moving large quantities of material, leveling, and finish grading. The DSP units come available in 8', 10' and 12' widths. DSP scrapers equipped with the optional tilt axle can do everything the standard axle does, as well as remove material on an angle for sloping, terracing and ditching. Material can be transferred by dragging it to nearby locations and raising the scraper to deposit the load. Surfaces can be graded and leveled by scraping material from high areas and allowing accumulated material to flow under the grader blade into lower areas. The DSP scrapers are designed for 70 to 125 horsepower tractors and have replaceable wear plates on the sides.



## PULL DIRT SCRAPER SPECIFICATIONS

MODELS:	DSP8	DSP10	DSP12
Horsepower Rating	70 to 125		
Transport Width	97"	121"	145"
Working Width	96 3/16"	120 3/16"	144 3/16"
Capacity	1 3/4 cu. yds.	2 1/4 cu. yds.	2 3/4 cu yds.
Horsepower Rating	without material in weight box		
Tilt Axle	1525	1645	1700
No Tilt Axle	1405	1525	1580
Weight of Material in Weight Box	760		
Depth of Box	39"		
Maximum Cutting Depth	5" below grade		
Dump Clearance	21"		
Maximum Tilt Depth To the Right	7"	7 5/8"	8 1/4"
Maximum Tilt angle	3 1/2°		
Tongue Construction	4" x 4" x 1/4" tubing		
Side Plate Construction	3/8" x 24 5/16" high x 39 3/4" deep		
Moldboard Construction	1/4" x 24 1/4" high when formed		
Cutting Edge	1/2" x 6" reversible & replaceable		
Cutting Edge Reinforcement	3" x 3" x 5/16" angle plus a 1/4" mold board = 9/16" at the cutting edge.		
Tires	New 9.5I x 15 8 PLY RIB TL on Rim 5 with 5.5 BHC		
Maximum Transport Speed	20 MPH		
Lift Cylinder	3 1/2" x 8" ASAE		
Tilt Cylinder	3 1/2" x 8" ASAE		





# POST HOLE DIGGERS

PHD  
SERIES

PHD2401 / PHD2402 / PHD2403

CONSTRUCTION



Whether you need to drill holes for posts, tree plantings, structural support members, or other tasks, Bush Hog® has a post hole digger to meet your needs. Our three 2400 Series models fit both Cat. 1 and Cat. 2 tractors. Augers are offered in both standard and heavy duty versions in sizes from 6 inches to 24 inches depending on digger model. Tough soil penetration is no problem for the powerful Bush Hog® post hole diggers.





### ***Augers... the heart of the digger***

- Bush Hog® offers both regular duty and heavy duty augers in a variety of sizes, from 6-inch to 24-inch depending on the model
- 2" Round hub connection
- Replaceable drill teeth
- Heavy duty augers are equipped with double flighting for more cutting surfaces and faster, easier digging– especially in heavier soils



- Rugged gearbox construction
- Special alloy pinion gears and tapered roller bearings on both sides of each gear
- Shear pin driveline protection



**PHD2401**



**PHD2402**

CONSTRUCTION

## **POST HOLE DIGGER SPECIFICATIONS**

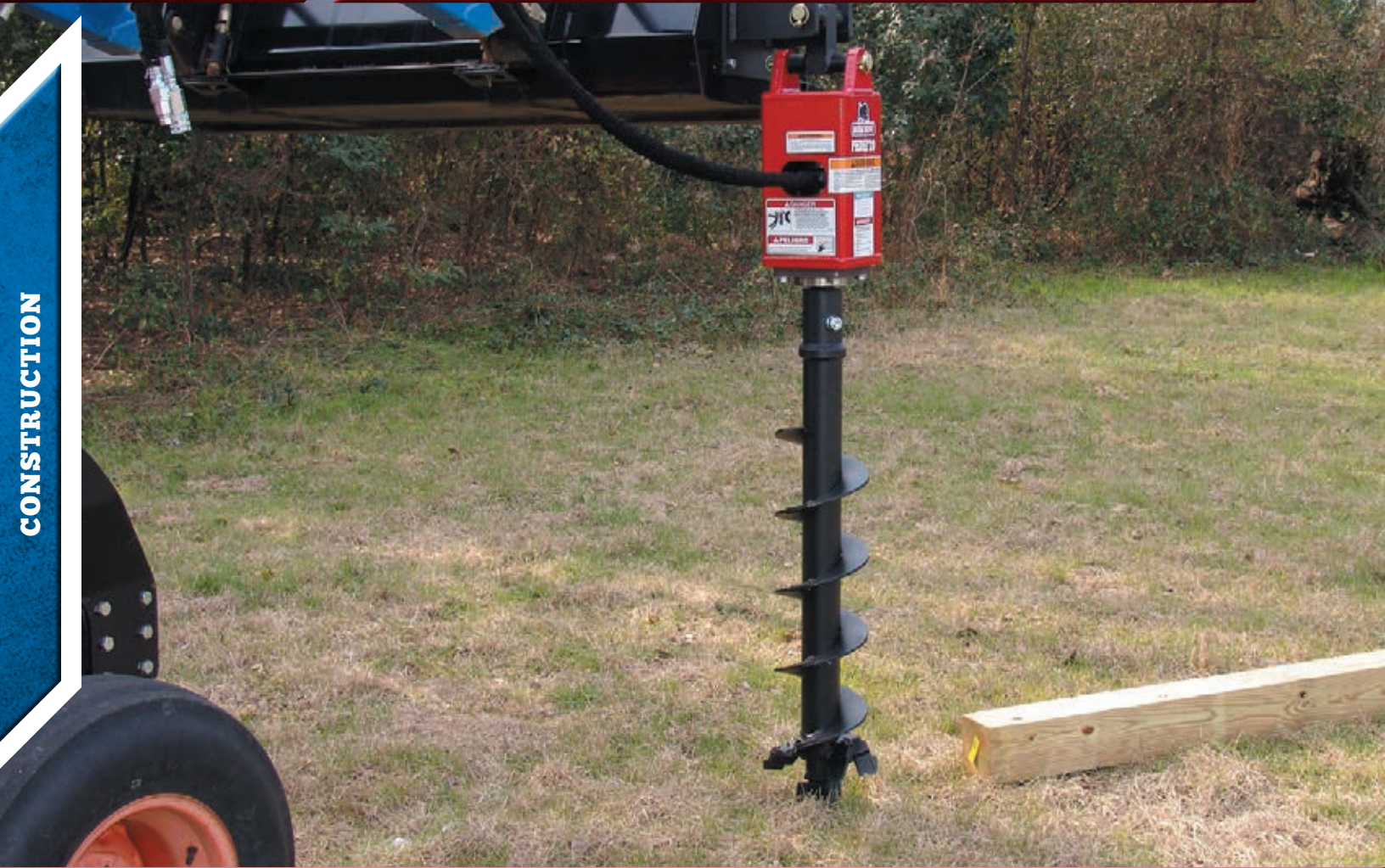
MODELS:		PHD2401	PHD2402	PHD2403
Auger Length	42" RD/48" HD			
Auger Diameter	6 in., 9 in. or 12 in., Reg. Duty and Heavy Duty	6 in., 9 in. or 12 in. Reg. Duty; 6 in., 9 in., 12 in., 18 in. or 24 in. Heavy Duty		
Auger RPM	180	170	135	
Type Hitch	Cat. I and II			
Input RPM	540			
Gear Ratio	3.00:1	3.18:1	4.00:1	
Output Shaft	2 in. Diameter			
Driveshaft	ASAE Cat. I	ASAE Cat. III		
Hitch Yoke	2- 7/8 in. tubing			
Boom	2- 7/8 in. tubing	3- 1/2 in. tubing	3- 1/2 in. tubing with reinforcing rib	
Component Protection	Shear bolt			
Options (All Models)	Hydraulic Down Force Kit   Parking Stand   Auger Extensions			



# HYDRAULIC POST HOLE DIGGERS

**PHDH  
SERIES**

**PHDHF15 / PHDHF20 / PHDHF30 / PHDHC20 / PHDHC30 / PHDHC35**



**CONSTRUCTION**

## ***Hydraulic Post Hole Digger Features...***

- Planetary Hydraulic drive features a high torque level to power the auger through the most demanding conditions.
- All augers are heavy industrial grade with 3/8" thick flighting. Sized in diameters from 6" to 36" (depending on model), these are excellent for all soil conditions and solid rock.
- The Farm and Ranch PHDHF Series features a selection of mounting brackets for skid steer loaders and front end loaders.
- The Commercial Grade PHDHC Series features mounting brackets for excavators, skid steer loaders, backhoes and front end loaders.
- All mounting brackets have a dual swivel feature that keeps the auger vertical while digging.



## HYDRAULIC POST HOLE DIGGER SPECIFICATIONS

MODELS: PHDHF15 | PHDHF20 | PHDHF30 | PHDHC20 | PHDHC30 | PHDHC35

Drive Type	Planetary With Reversible Motor					
Shaft Output Size	2" Hex					
Maximum Output Torque*	1419 FT. LBS.	1777 FT. LBS.	2632 FT. LBS.	2008 ft. lbs	2937 ft. lbs.	3582 ft. lbs.
Recommended Hyd. Flow	6 to 15 GPM	10 TO 20 GPM	15 TO 30 GPM	10 to 20	15 to 30	20 to 35
Max. System Pressure	3,000 PSI					
Drive Protection	Hydraulic Relief Valve					
Hydraulic Hoses	1/2" x 8 ft. with 10 MB ends.					
Type of Mounts	Loader Bucket, Skid Steer Universal, Euro			Loader Bucket, Skid Steer Universal, Euro, backhoe		
Max. Auger Diameter (Rock)	N/A	9"	12"	24"	36"	
Max. Auger Diameter (Dirt)	18"	30"	36"	30"	36"	
Standard Digging Depth	48"					
Warranty	2 Years Limited			5 Years Limited		

\* All values are theoretical. Specifications and models are subject to change without notice.



### AVAILABLE AUGER TYPES

Note: Auger tips are available only in black.  
Shown in yellow for visual effect only.



**HRAD\***



**HSRA\***



**HSDA\*\***



**T-POST\*\***

\* Available only for C-Series posthole diggers

\*\* Available for both C & F-Series posthole diggers



# BACKHOES

**XD  
SERIES**

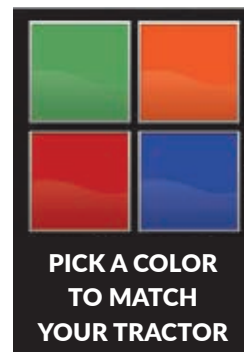
**XD65C / XD65 / XD75 / XD95 / XD95EL**

CONSTRUCTION



## ***Break ground, not your back!***

Easily access those tight work spaces and get down to some digging. Bush Hog®'s new line of XD series backhoes are designed for tractors ranging from 18 to 100 horsepower along with skid steers and mini skid steers depending on the model. Perfect for digging footers, trenches and all general landscaping and construction needs, the XD series backhoes deliver value and strong performance to your operation.





## XD65C Performance Features

- Digging Depth (2 ft. flat bottom): 6'4"
- Overall Operating Height (fully raised): 91"
- Reach from Swing Post: 100"
- Bucket Rotation: 180°
- Swing Arc: 150°

## Safety Features

Stabilizer Width: 72"

### XD65C

For Tractors 18-28 HP  
and Mini Skidsteer



### XD65

For Subcompact Tractors 18-30 HP

With a digging depth of 6 feet and an 8-foot reach, the XD65 gets down and dirty, breaking the frostline and finishing the job quickly.



### XD75

For Midsize Tractors 30-60 HP

Digging 7.5 feet deep and reaching 10 feet across, the XD75 breaks ground and keeps on going. With an excavator-style curved boom and easy-to-use controls, the XD75 is ready to handle any ground conditions from topsoil to clay and gravel.



### XD95

For Tractors 30-100 HP

For contractors and landscapers that need to dig deep, but not in their pockets, the Bush Hog® XD95 makes the grade. The large XD95 extends the usefulness of 30-100 HP tractors with digging capabilities of 9 feet deep. Trenching for footings and excavating to spec becomes quick and easy without the added expense of a single-purpose excavator. The digging bucket is built using AR400-strength steel, ensuring rugged longevity.



### XD95EL

Extendable Backhoe

For Tractors 30-100 HP

The Bush Hog® digs even deeper with the Extendable XD95EL model. Capable of hydraulically extending an extra 24" to dig 11' 4" deep, the extendable dipper stick gives you the extra reach when you need it. When contracted, the bucket and dipper stick curl up tight to the boom for easy travel and compact storage.



## BACKHOE SPECIFICATIONS

MODELS: XD65C | XD65 | XD75 | XD95 | XD95EL

Transport Height (with boom fully retracted)		64.5"	63"	79"	92"	
Transport Width (with stabilizers up)		41"	40"	42½"		
Loading Height (bucket at 60° rotation)		62"		80"	89"	89"/104"
Ground Clearance		8½"	10½"			
Transport Length		56"	68"	80"	81"	
Transport Weight (base unit only – no bucket or mounts)		500 lbs.	575 lbs.	800 lbs.	850 lbs.	1000 lbs.
Digging Depth (2 ft. flat bottom)		6'4"		7'8"	9'4"	9'4"/11'4"
Overall Operating Height (fully raised)		91"	92"	119"	135"	135"/152"
Reach from Swing Post		100"		123"	141"	141"/164"
Bucket Rotation		180°				
Swing Arc		150°	180°			
Stabilizer Width (Spread)		72"	74"	89"		
Stabilizer Width (Transport)		41"	40"	42½"		
Operating Pressure		1800 psi		2250 psi		
SAE* Dipper Boom Digging Force		1250 lbs.		2300 lbs.	3200 lbs.	3100/ 2200 lbs.
SAE* Bucket Digging Force		2054 lbs.	2600 lbs.	3800 lbs.	3925 lbs.	
Boom Lift Capacity (end of dipper 3' from ground)		250 lbs.	385 lbs.	925 lbs.	750 lbs.	710/580 lbs.
Hydraulic Volume Requirements		3½-6 gpm*	5-7 gpm*			
Flow Divider		N/A		Included		
Recommended Tractor HP		18-28 HP	18-30 HP	30-60 HP	30-100 HP	
Recommended Skidsteer Requirements		Mini Skidsteer		30-60	30-100	
Cylinder Diameters	Main Boom Cylinder Diameter	2.5		3.0		
	Dipper Cylinder Diameter	2.25		2.5		
	Bucket Cylinder Diameter	2.5 (x1)	2.0 (x2)	2.5 (x2)		
	Swing Cylinder Diameter	2	2.25	2.5		
	Stabilizer Cylinder Diameter	2.0		2.5	3.0	
	Extender Cylinder Diameter	N/A				1.75
Bucket Sizes Available		9, 12, 15, 18		9, 12, 15, 18, 24		
3 Point Hitch		N/A	Cat I (PT300)	Cat I (PT300) / Cat II (PT322)		

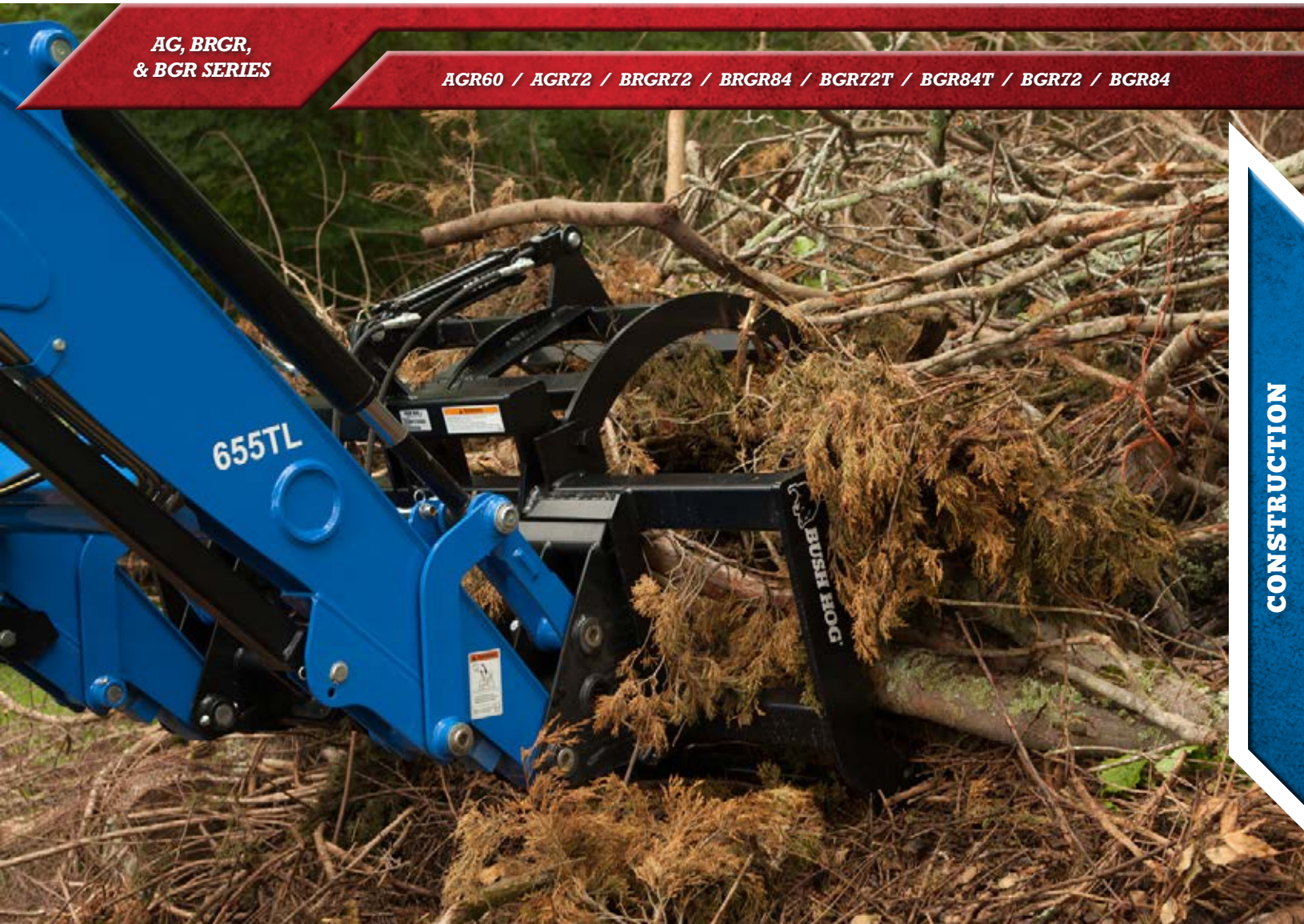
Bush Hog uses Pioneer style ball type hydraulic couplings for all tractor auxiliary connections. Substitutions must be made at the customers expense.  
Bush Hog backhoes are designed for two line open center hookup.



# GRAPPLES

AG, BRGR,  
& BGR SERIES

AGR60 / AGR72 / BRGR72 / BRGR84 / BGR72T / BGR84T / BGR72 / BGR84



CONSTRUCTION

Bush Hog's® AG, BRGR, and BGR-series grapples are built tough and help you make quick work of larger jobs. The AG and BGR grapples use an open bottom design to move brush and debris, rake, and dig without picking up dirt. The BRGR-series provides the operator with the grasp and hold abilities of a grapple, along with the storage capacity of a conventional bucket. Each model is designed to mount onto a universal skid steer mount. Let Bush Hog®'s grapples help you get a grip on your work.



## AG Series Features

- Replaceable 5/8" plow points
- 27" opening
- Not for skid steer use
- Light weight and rugged design for today's compact tractors with a maximum of 40 h.p.
- Compatible with Skid Steer, John Deere, and Euro Quick Attach Systems

### AG GRAPPLE SPECIFICATIONS

MODELS: AGR60   AGR72		
Overall Depth	25", closed	
Overall Height	37 3/4"	
Overall Width	5'	6'
Usable Depth	N/A	
Usable Open Height	31"	
Usable Width (in side end plates)	5'	6'
Roll Back Angle	N/A	
Weight	372 lbs	409 lbs
Number of Teeth	5	
Attachment Method	Universal Skid Steer Quick Attach, Euro or John Deere	
Paint Color	Red, Green, Orange, Blue, Black, or yellow	



## BRGR Series Features

- Constructed of 1/2-inch top quality steel
- 3/8-inch solid quick attach plate
- 9-inch aggressive teeth
- Protected cylinders and hoses
- Extra wide opening for large capacity work
- Independent grapple arms for uneven loads
- Max. 100 HP for rubber tire machines
- Max. 80 HP for rubber track machines
- Fits all skid steers and tractors using the universal skid steer quick attach system

### BRUSH GRAPPLE SPECIFICATIONS

MODELS: BRGR72   BRGR84		
Overall Depth	37 1/2"	
Overall Height	25 1/2"	
Overall Width	6'	7'
Usable Depth	28"	
Usable Open Height	46 1/2"	
Usable Width (in side end plates)	71"	83"
Roll Back Angle	13 degrees	
Weight	702 lbs.	787 lbs.
Number of Teeth	8	10
Attachment Method	Universal Skid Steer Quick Attach	
Paint Color	Black	





## BGR Series Features

- Constructed of 1/2-inch top quality steel
- 3/8-inch solid quick attach plate
- Protected cylinders and hoses
- Wide opening for large capacity work
- Independent grapple arm
- Solid bottom for materials
- Max. 100 HP for rubber tire machines
- Max. 80 HP for rubber track machines
- Fits all skid steers and tractors using the universal skid steer quick attach system



CONSTRUCTION

## BUCKET GRAPPLE SPECIFICATIONS

MODELS:	WITH TEETH		WITHOUT TEETH	
	BGR72T	BGR84T	BGR72	BGR84
Overall Depth	39 1/4"			
Overall Height	24"			
Overall Width	6'	7'	6'	7'
Usable Depth	33 3/4"			
Usable Open Height	45 1/2"			
Usable Width (in side end plates)	71"	83"	71"	83"
Roll Back Angle	20 degrees			
Weight	907 lbs.	993 lbs.	827 lbs.	903 lbs.
Number of Teeth	8	9	N/A	
Attachment Method	Universal Skid Steer Quick Attach			
Paint Color	Black			



# LOG GRAPPLES

LG SERIES

LG320 / LG420 / LG420X

CONSTRUCTION







### LG320

Thick or thin, the grapple's tines fold together holding tight anything from 3 inches to 48 inches in diameter.



### LG420



### LG420X

360° Hydraulic Grapple Rotation

## LOG GRAPPLE SPECIFICATIONS

MODELS:		LG320	LG420	LG420X
Attachment Method	Category 1 3PH Mount	Standard Skid Steer Quick Attach		
Dimensions	51" x 52" x 43"	51" x 52" x 44"	51" x 52" x 47"	
Weight	350 lbs	560 lbs	588 lbs	
Boom Lift Capacity	3000 lbs			
Rotator Rating	6750 lbs			
Grapple Rotation	180° Lockable Spring Return		360° Continuous Hydraulic	
Grapple Opening	3" - 48"			
Grapple Cylinder Clamp Force	9400 lbs			
Recommended Horsepower	20-60 HP	30-70 HP		
Hydraulic Flow	5-10 gpm			
Hydraulic Pressure	3000 psi			



# PALLET FORKS

*PF SERIES*

*PF MODEL*



The PF series pallet forks can be used in a variety of applications, from around the farm to nurseries to construction sites, the PF series forks will save you time and money. Quickly and conveniently convert your tractor mounted or skid steer loader with a universal skid steer frame into a material handler and expand the utilization of existing machines. With a lift capacity of 4,000 pounds, the PF series pallet forks will handle the lifting for you.



## PF Model Features

- 48" Fork length
- 4,000 lbs. Capacity
- 1 ½" x 4" fork size
- Forks adjustable in 4" increments
- Step plate for easy access to cockpit of skid steer
- Models are compatible with Skid Steer, John Deere and Euro Quick Attach Systems



CONSTRUCTION

### PF MODEL SPECIFICATIONS

Overall Height	41 3/8"
Overall Width	45 5/16"
Overall Depth	60 3/8"
Fork Size	1 1/2" X 4"
Fork Length	48"
Fork Adjustable Width	Up to 44 3/8", Increments of 4"
Weight	308 lbs.
Max. Capacity	4,000 lbs.
Attachment Method	Universal Skid Steer Quick Attach, Euro or John Deere
Color	Black



# COMPACT LANDSCAPE IMPLEMENTS

AERATORS, REAR BLADES,  
BOX BLADES, TILLERS, ROAD  
GRADERS, LANDSCAPE  
RAKES, & PLUGGERS

ARVP SERIES / CRB SERIES / CBX SERIES / RTC SERIES /  
CRG SERIES / CLR SERIES / PGVP SERIES



## ***Big performance for small tractors.***

Bush Hog®'s compact tools are designed to do big things with small tractors up to 24 HP. All feature Bush Hog®'s legendary rugged construction and performance features that'll help you get the job done not just today or tomorrow, but for many years to come.

***Compact  
Aerators***



***Compact  
Pluggers***



***Compact Rear  
Blades***



***Compact  
Landscape  
Rakes***



***Compact  
Tillers***



***Compact  
Box Blades***



***Compact  
Road Grader***





### COMPACT AERATOR SPECIFICATIONS

**MODELS: ARVP24 | ARVP36 | ARVP48**

Overall Width	24 5/8 in.	36 3/4 in.	49 7/8 in.
Working Width	20 3/8 in.	32 7/8 in.	44 13/16 in.
Overall Depth (including Hitch)	47 3/16 inches		
Hitch Type	Pin-On Clevis		
Weight	88 lbs.	115 lbs.	150 lbs.
Number of Slicing Knives	60	90	120
Number of Hubs	2	3	4
Knife Spacing	3 15/16 inches		
Axle	1 1/4 inches		

### COMPACT BOX BLADE SPECIFICATIONS

**MODELS: CBX48 | CBX60**

Working Width	48 inches	60 inches
Box Depth	12 inches	
Side End Plate Thickness	3/16 inches	
Scarifier Size	5/8 inches x 2 1/2 inches	
Number of Scarifier Teeth	4 teeth	5 teeth
Type Hitch	ASAE Cat. I/QH	
Cutting Edge	Reversible	
Number of Cutting Edges	2 Blades, Bolt on Reversible Cutting Edge	
Maximum Tractor HP	24 PTO	
Approximate Weight	248 lbs.	258 lbs.
Warranty	1-year limited warranty	

### COMPACT LANDSCAPE RAKE SPECIFICATIONS

**MODELS: CLR48 | CLR60**

Working Width	48 inches	60 inches
Type Hitch	ASAE Cat. I / QH	
Maximum Tractor HP	24 PTO	
Moldboard Widths	48 inches	
Approximate Weight	126 lbs.	143 lbs.
Rake Pivot	18° and 36°	
Pivot King Pin	1 1/4 inches	
Tine Spacings	1 inch	
Tine Size	1 inch	
Warranty	1-year limited warranty	

### COMPACT PLUGGER SPECIFICATIONS

**MODELS: PGVP24 | PGVP36 | PGVP48**

Overall Width	24 5/8 in.	36 3/4 in.	49 7/8 in.
Working Width	19 1/4 in.	31 5/16 in.	43 3/4 in.
Overall Depth (including Hitch)	47 3/16 inches		
Hitch Type	Pin-On Clevis		
Weight	86 lbs.	113 lbs.	146 lbs.
Number of Core Spoons	16	24	32
Number of Hubs	2	3	4
Spoon Spacing	6 inches		
Axle	1 1/4 inches		

### COMPACT REAR BLADE SPECIFICATIONS

**MODELS: CRB48 | CRB60 | CRB72**

Moldboard Widths	48 inches	60 inches	72 inches
Approximate Weight	136 lbs.	150 lbs.	164 lbs.
Maximum Tractor HP	24 PTO		
Type Hitch	ASAE Cat. I/QH		
Moldboard Height and Thickness	12 inches x 1/4 inches		
Moldboard Cutting Edge	3/8 x 3 inches		
King Pin Diameter	1 1/4 inches		
Angle Adjustment	15° & 30° Forward & Reverse		
Warranty	1-year limited warranty		
Colors	Available in major tractor colors!		

### COMPACT TILLER SPECIFICATIONS

**MODELS: RTC50G**

Total Width	53 inches
Working Width	48 inches
Number of Blades	6 blades per flange
Minimum Tractor HP	15 PTO
Type Hitch	ASAE Cat. I / QH
Offset	Center Mount
Number of Flanges	5
Rotor Speed	253 RPM/540 PTO
Type of Blades	C-type
Power to Rotor Transmission	Gear Drive
Depth of Cut	Slip Clutch Standard
Driveline	48 inches
Approximate Weight	374 lbs.
Warranty	1-year limited machine warranty; 5-year limited gearbox warranty

### COMPACT ROAD GRADER SPECIFICATIONS

**MODELS: CRG48**

Hitch	238 lbs.
Max. Tractor HP (PTO), 2WD/FWA	24/20
Working Width	48 inches
Weight	238 lbs.
Side Panel Thickness	3/16 inches
Front Main Beam Construction	3 inches x 3 inches x 3/16 inches
Rear Beam Construction	2 inches x 2 inches x 11GA
Skid Shoe Construction	1/4 inches x 2 inches x 38 1/8 inches, Replaceable
Scarifier Shanks	N/A
Cutting Edges	Two 3/8" x 6" bolt-on, replaceable and reversible heat-treated blades
Warranty	1-year limited warranty



# REAR-MOUNTED BLADES

4' TO 14'  
RUGGED BLADES

CRB SERIES / 35 SERIES / 50 SERIES / 70 SERIES / 91 SERIES / 100 SERIES /  
141 SERIES / 160 SERIES / 181 SERIES / 225 SERIES / 300 SERIES



## ***We can help you out of a tough scrape!***

If you need a tool for landscaping, snow removal, feed lot work, ditching, terracing, dam building, road reconditioning, or general farm maintenance, a Bush Hog® Rear Mounted Blade is always the answer. Bush Hog® offers models ranging from light duty to heavy duty in a variety of widths, all engineered and built to provide years of service under demanding conditions at a very reasonable price. So if you find yourself facing a tough scrape, turn to Bush Hog® for performance you can count on!

LANDSCAPE



**Whether you're a homeowner, farmer, landscaper, or contractor, Bush Hog® has a blade for every job and every level of duty.**

### COMPACT REAR BLADE (CRB)

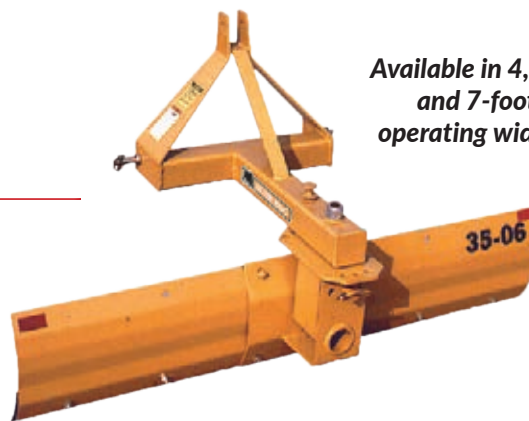
Bush Hog®'s compact rear blades are the ideal choice for light duty landscaping, driveway maintenance, or snow removal. These light duty blades are rated for use on two-wheel drive tractors up to 24 PTO horsepower and four-wheel drive tractors up to 15 PTO horsepower. The moldboard may be reversed for backfilling and angled left or right for use in a wide variety of applications. Tilting of the blade is achieved by adjustment of the tractor's 3-point hitch arms.



Available in 4, 5, and 6-foot operating widths.

### 35 SERIES BLADE

Whether you are a budget-minded landscape contractor considering a blade for your jobsite, or a homeowner interested in landscaping or snow removal, the 35 Series has what you're looking for. These utility blades are rated for use on two-wheel drive tractors up to 35 PTO horsepower and four-wheel drive tractors up to 30 PTO horsepower and feature tilt, angle, and offset adjustments in both forward and reverse positions.



Available in 4, 5, 6, and 7-foot operating widths.

### 50 SERIES BLADE

Ideal for jobsites, landscaping, and homeowners, the 50 Series is the preferred choice for those who need a 50 PTO horsepower rated blade with the features and capabilities of a much heavier unit. Rated for a maximum of 50 HP 2WD or 40 HP 4WD, the 50 Series blades feature tilt, angle, and offset adjustments in both forward and reverse positions.



Available in 6 and 7-foot operating widths.

### 70 SERIES BLADE

The medium-duty 70 Series Blades are designed for landscaping, road maintenance, and snow removal. These blades feature a heavy duty mainframe and high-strength, reinforced moldboards to ensure years of trouble-free performance. The 70 Series Blades are rated for use on two-wheel drive tractors up to 70 PTO horsepower and four-wheel drive tractors up to 55 PTO horsepower. These blades feature tilt, angle and offset adjustments in both forward and reverse positions.



Available in 6, 7, and 8-foot operating widths.



## 91 SERIES BLADE

The rugged construction of the 91 Series Rear Blades make them ideal for a wide variety of applications, ranging from general road maintenance to ditching and terracing jobs.

These blades are recommended for use on two-wheel drive tractors up to 90 PTO horsepower and four-wheel drive tractors up to 70 PTO horsepower.

The 91 Series blades feature a number of tilt, angle, and offset adjustments in both the forward and reverse positions for the versatility to handle a variety of tough jobs.



Available in 7 and 8-foot operating widths.

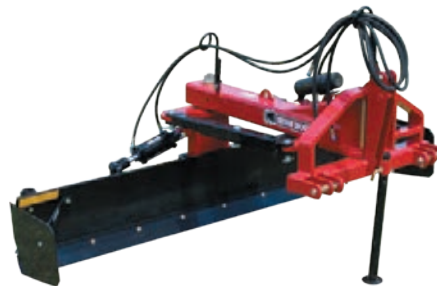
## 100 & 160 SERIES BLADES

The 100 and 160 Series Rear Blades are the ideal choice for heavy-duty grading chores around the farm such as road construction, terracing, dam building, and cleaning out feed lots.

These blades offer a choice of manual or hydraulic tilt, angle, and offset adjustments. Moldboard can be reversed for backfilling. They are rated for use on a wide range of 2WD and 4WD tractors, depending on blade width.

With their heavy-duty construction, the 100 & 160 Series Blades are engineered and built to meet the most demanding conditions.

100 Series  
Available in 8 and 9-foot operating widths.



160 Series  
Available in 8 and 10-foot operating widths



## 141 & 181 SERIES BLADES

Let Bush Hog®'s new 141 and 181-Series Blades give you the strength and durability to pave a new way. Perfect for road building and maintenance, snow removal, terracing, backfilling, and grading, these blades can handle any scrape. These new series of rear-mounted blades are available in sizes ranging from 7-feet all the way up to 10-feet and recommended for tractors from 110 HP up to 180 HP. Standard features include 3-point ASAE Category II and Category III hitches with Quick Hitch compatibility, 4-inch King Pin, 1/2-inch x 6-inch cutting edges, and a 19-inch moldboard height. These blades also feature manual or hydraulic offset, angle, and tilt adjustments. Other available options include heavy duty skid shoes, as well as, heavily constructed end plates.



## 225 & 300 SERIES BLADES

The heavy-duty design and construction of the 225 and 300 Series make them ideal for the most rugged road maintenance and grading jobs. The precision-formed moldboards are reinforced to withstand the most demanding conditions and can be reversed for backfilling. These top-of-the-line blades are rated for use on higher horsepower tractors and feature standard all-hydraulic controls for ease of operation. The 225 and 300 Series are ready for heavy-duty action and give you the ability and confidence to tackle the toughest jobs.

225 Series  
Available in 8, 10 and 12-foot operating widths.



300 Series (not shown).  
Available in 12 and 14-foot operating widths.



## REAR BLADE SPECIFICATIONS

SERIES:	CRB	35	50	70	91	100	141	160	181	225	300
Moldboard Width	4, 5, and 6-feet	4, 5, 6, and 7-feet	6 and 7-feet	6, 7, and 8-feet	7 and 8-feet	8 and 9-feet		8 and 10-feet	9 and 10-feet	8, 10, and 12-feet	12 and 14-feet
Moldboard Height and Thickness	12 x 1/4-inch	14.5 x 1/4-inch	15 7/8 x 1/4-inch	18 x 5/16-inch	16 x 3/8-inch	17 x 3/8-inch	19-Inches	18 x 1/2-inch	19-Inches	20 x 1/2-inch	
Moldboard Cutting Edge	3/8 x 3-inches	1/2 x 3-inches Reversible	1/2 x 6-inches reversible			1/2 x 6-inches					
Hitch	3-Pt. Cat. I Cat. I Quick Hitch			3-Pt. Cat. I & II, Quick Hitch			3-Pt. Cat. II & III, Quick Hitch				3-Pt. Cat. III & IV, Quick Hitch
Approximate Weight	136-lbs. (4-ft.) 150-lbs. (5-ft.) 164-lbs. (6-ft.)	250-lbs. (4-ft.) 280-lbs. (5-ft.) 310-lbs. (6-ft.) 340-lbs. (7-ft.)	403-lbs. (6-ft.) 430-lbs. (7-ft.)	510-lbs. (6-ft.) 538-lbs. (7-ft.) 572-lbs. (8-ft.)	807-lbs. (7-ft.) 827-lbs. (8-ft.)	836-lbs. (8-ft.) 876-lbs. (9-ft.)	1145-lbs. (8-ft.) 1170-lbs. (9-ft.)	1339-lbs. (8-ft.) 1459-lbs. (10-ft.)	1586-lbs. (9-ft.) 1613-lbs. (10-ft.)	2120-lbs. (8-ft.) 2260-lbs. (10-ft.) 2400-lbs. (12-ft.)	3463-lbs. (12-ft.) 3603-lbs. (14-ft.)
Max. Tractor HP (PTO)	N/A	35 (2WD), 30 (4WD)	50 (2WD), 40 (4WD)	70 (2WD), 55 (4WD)	90 (2WD), 70(4WD)	125 (2WD), 80 (4WD)	141 (2WD), 110 (4WD)	190 (2WD), 160 (4WD)	180 (2WD), 140 (4WD)	250 (2WD), 225 (4WD)	300 (12FT), 250 (14'FT)
2-Wheel Drive	24	35	50	70	90	8-feet: 125 9-feet: 95	141	8-feet: 190 10-feet: 160	180	8-feet: 250, 10-feet: 225 12-feet: 160	N/A
Front Wheel Assist	15	30	40	55	70	8-feet: 105 9-feet: 80	110	8-feet: 160 10-feet: 135	140	8-feet: 225 10-feet: 200 12-feet: 160	12-feet: 300 DBHP 14-feet: 250 DBHP
King Pin Diameter	1 1/4-inch Grade 8				3-inches		4-inches			4 1/2-inches	5-inches
Tilt Adjustment	3-Pt. Hitch	15° up or down		30° up or down	15° up or down (manual or hydraulic)					15° up or down (hydraulic)	
Offset Adjustment	None	12-inches left or right (manual)	23-inches left or right (manual)	18-inches left or right (manual or hyd.)	30-inches left or right (manual or hyd.)		37-inches left or right (manual or hyd.)			46-inches left or right (hydraulic)	50-inches left or right (hydraulic)
Angle Adjustment	5 forward positions up to 30°, 3 reverse positions up to 15°				45° left or right in forward position, 20° left or right in rev. position (manual or hydraulic)	45° left or right (in forward and reverse position), manual or hydraulic	45° left or right (manual or hydraulic) in forward and reverse	45° left or right (in forward and reverse position, manual or hyd.)	45° left or right (manual or hydraulic) in forward and reverse	45° left or right (in forward and reverse position, manual or hyd.)	45° left or right (in forward and reverse position, hydraulic)
Skid Shoes	N/A				Optional						
End Plates	N/A					Optional					
Parking Stand	N/A		Standard								
Hydraulics	N/A				Optional					Standard	

ALL SPECIFICATIONS SUBJECT TO CHANGE WITHOUT NOTICE.

NOTE: 225 and 300 Series blades not warrantied for use on track-type tractors.



# BOX BLADES

BBX, SBX, &  
MBX SERIES

BBX48 / BBX60 / BBX65 / BBX72 / SBX48 / SBX60 / SBX65 /  
SBX72 / SBX78 / SBX84 / MBX60 / MBX72 / MBX84 / MBX96



**More tools to handle the landscaping chores of homeowners and compact tractor owners...**

Bush Hog® now offers a light-duty, full-size box blade line, along with a series of compact road graders that expand the work capabilities of your small, compact and subcompact tractors. Bush Hog® is committed to providing you more reasons to get out of the house and go to work. The dirt around your house or workplace better look out... things are going to be moving!

## LIGHT-DUTY BOX BLADE SPECIFICATIONS

MODELS: BBX48 | BBX60 | BBX65 | BBX72

Working Width	48"	60"	65"	72"
Moldboard Height	15 5/8"			
Box Depth	22"			
Overall Depth	27"			
Overall Height	33"			
Overall Width	49"	61"	67"	73"
Side Sheet Thickness	1/4"			
Scarifier Size	5/8" x 2 1/2"			
Number of Scarifier Teeth	4	5		6
Hitch	Cat. 1 Std. and QH			
Lower Hitch	Single lug			
Cutting Edge (Reversible)	3/8" x 6"			
Number of Blades	2			
Max. HP Requirement 2 WD	40			
Max. HP Requirement 4 WD	30			
A-Frame	Bolt-on			
Scarifier Box	4" x 4" x 1/4"			
Weight (pounds)	260	325	375	390





### SBX Series Box Blades

The Bush Hog® SBX Series Box Blades are exceptional tools when the job requires grading, leveling or back filling. The scarifiers have three adjustable height positions and replaceable heat-treated tips for extended wear. Two 1/2 x 6-inch heat-treated, reversible and replaceable cutting edges smooth even the roughest ground. Rated for use on 2WD tractors up to 50 PTO horsepower and 4WD tractors up to 40 PTO horsepower, these box blades provide excellent value for the price.

#### SBX BOX BLADE SPECIFICATIONS

MODELS:	SBX48	SBX60	SBX65	SBX72	SBX78	SBX84
Working Width	48"	60"	65"	72"	78"	84"
Moldboard Height	18"					
Box Depth	24"					
Overall Depth	29"					
Overall Height	35-1/4 "					
Overall Width	49"	61"	66"	73"	78"	85"
Side Sheet Thickness	3/8"			1/4"	3/8"	
Scarifier Size	3/4" x 2-1/2 "					
Number of Scarifier Teeth	4	5		6		
Hitch	ASAE Category 1 & Quick Hitch					
Lower Hitch	Double Lug			Single Lug	Double Lug	
Cutting Edge	1/2" x 6" (Reversible)					
Number of Blades	2					
Maximum HP Requirement	2					

SPECIFICATIONS SUBJECT TO CHANGE WITHOUT NOTICE

### MBX Series Box Blades

Bush Hog's MBX Series Medium Duty Box Blades are the ideal choice for use around the farm or by landscape contractors on the jobsite. These box blades are rated for use on 2WD tractors up to 65 PTO horsepower and 4WD tractors up to 55 PTO horsepower with a Cat. I or II Quick Hitch. They feature a heavy duty A-frame, heat-treated scarifier shanks, and a swinging tailgate to provide years of trouble-free performance. Whether you are grading driveways, cleaning out barns, or leveling a construction jobsite, these medium duty box blades are sure to meet your needs.



#### MBX BOX BLADE SPECIFICATIONS

MODELS: MBX60   MBX72   MBX84   MBX96				
Working Width	60"	72"	84"	96"
Moldboard Height	18"			
Box Depth	24"			
Overall Depth	29"			
Overall Height	35-1/4 "			
Overall Width	61"	73"	85"	97"
Swinging Tailgate	Yes			
Side Sheet Thickness	3/8"			
Scarifier Size	3/4" x 2-1/2 "			
Number of Scarifier Teeth	5	6		
Hitch	ASAE Category 1 & 2 & Quick Hitch			
Lower Hitch	Triple Lug			
Cutting Edge	1/2" x 6" (Reversible)			
Number of Blades	2			
Maximum HP Requirement	65 (2WD), 55 (4WD)			

SPECIFICATIONS SUBJECT TO CHANGE WITHOUT NOTICE



# RETRACTABLE SHANK BOX BLADES

**RBX  
SERIES**

**RBX720 / RBX780 / RBX840**

## ***RBX Series Box Blades***

Bush Hog®'s BBX Series of Box Blades is an excellent choice for a full-size box blade that can handle landscaping chores and other light duty tasks around the home or farm. Designed for small, compact and subcompact tractors with up to 30 HP (4WD) or 40 HP (2WD), the BBX Series is built to handle tough tasks at a very reasonable price.

### ***RBX Series Performance Features***

- Heavy-Duty A Frame with Category 1 Quick Hitch
- Heat-Treated Scarifier Teeth
- Heavy-Duty Double Strap Hitch
- Reversible, Replaceable Cutting Edges
- Heavy-Duty End Plates
- Strong Tubular Construction
- Deep 22" Box height
- Powder Coat Paint
- Available in Major Tractor colors



### ***RETRACTABLE SHANK BOX BLADE SPECIFICATIONS***

MODELS:		RBX720	RBX780	RBX840
Working Width	72"	78"	84"	
Number of Scarifiers	6	5		
Cutting Edge	Reversible 1/2" x 6", Heat Treated			
Points & Shanks	Replaceable			
Hitch	ASAE Category 1 & 2, Quick Hitch			
Maximum HP Requirement	65 (2WD), 55 (4WD)			



# ROLLOVER BOX BLADES

RO  
SERIES

RO-600 / RO-650 / RO-720



## RO Series Box Blades

With the ability to perform three different functions, Bush Hog®'s Rollover Box Blade is one of the most versatile implements for landscapers. In the first position the heat-treated reversible cutting edge is ideal for grading the material. In the second position, backfilling can be easily accomplished. Finally, in the third position, heavy duty scarifier shanks give you plenty of ripping ability when breaking up compacted ground. What makes this tool more valuable is that all three positions can be changed from the tractor seat. These rollover box blades are rated for use on 2WD tractors up to 60 PTO horsepower and 4WD tractors up to 45 PTO horsepower.

### ROLLOVER BOX BLADE SPECIFICATIONS

MODELS: RO-600 | RO-650 | RO-720 | RO-840

Working Width	60 in.	65 in.	72 in.	84 in.
Number of Scarifiers	5		6	
Cutting Edge	Reversible 1/2" x 6", Heat Treated			
Points & Shanks	Replaceable			
Hitch	ASAE Category 1 & Quick Hitch			
Maximum HP Requirement	60 (2WD), 45 (4WD)			

SPECIFICATIONS SUBJECT TO CHANGE WITHOUT NOTICE



# ROAD GRADERS

RG & HDRG  
SERIES

RG60 / RG72 / RG84 / HDRG84 / HDRG96



Potholes beware! Bush Hog®'s line of Road Graders smooth out your ride and return your dirt, gravel or slag roads to like-new condition. Designed with two offset and angled scraper blades within a boxed frame, these Bush Hog® Road Graders cut off material from the high spots in your road and deposit the material in the low lying areas, thereby leveling the surface. Our RG series Road Graders are available in 5', 6' and 7' operating widths and are designed for use on tractors up to 50 horsepower. When you encounter the toughest road conditions and even more material needs to be cut and moved to level the surface, scarifier shanks with replaceable hardened tips are available on each Road Grader to rip the soil up to depths of 2-3/8". In addition to maintaining existing roads, these Road Graders can be used in countless other applications such as road building, landscaping, building and maintaining baseball fields and horse arenas, to name a few. Let Bush Hog®'s Road Graders level out your work areas!





Scarifiers can rip soil up to 2-3/8" deep.



Dual, replaceable and reversible  
 1/2" x 6" cutting edges.



Full length, replaceable skids.

## RG Series Features

- Cat. 1 hitch, Quick Hitch compatible
- Strong tubular steel frame construction
- Offered in 5', 6' and 7' working widths
- 13-3/4" side skirt depth for moving large volumes of loose material
- Three-position shanks with replaceable hardened tips
- Dual, replaceable and reversible 1/2" x 6" heat-treated cutting edges
- Full length, replaceable skids
- Available in major tractor colors

## RG SERIES ROAD GRADER SPECIFICATIONS

MODELS:		RG60	RG72	RG84
Hitch	Cat. 1 Std and QH			
Recommended HP, 2WD / (FWA)	50 / (40)			
Working Width	60"	72"	84"	
Weight (lbs.)	500	571	642	
Side Panel Thickness	3/16"			
Front Main Beam Construction	4" x 4" x 5/16" wall			
Rear Beam Construction	2-1/2" x 2-1/2" x 3/16" wall			
Skid Shoe Construction	3/8" x 2-1/2" x 46-3/4" long			
Scarifier Shanks	Three position shanks with dimpled-on hardened tips			
Number of Scarifier Shanks	4	6		
Cutting Edges	Two 1/2" x 6" bolt-on, replaceable and reversible heat-treated blades			





### ***HDRG Series Road Graders***

The new Bush Hog® Heavy Duty Road Grader is available in 7-feet and 8-feet operating widths. The HDRG's heavy duty construction boasts a weight of up to 828-lbs., enabling it to tackle any grading job. The HDRG's design features all-welded construction, a max rating up to 90 HP, and two offset and angled scraper blades that are vertically adjustable. The vertical blade adjustment system provides the user the ability to adjust the cutting depth to compensate for blade wear and tear. Heat treated plow point scarifier shanks enable the HDRG to rip through most any earthen surface when grading driveways, fire lanes, and maintaining/building dirt or gravel roads.





**HDRG84 shown**

Four-position hardened  
steel shanks

### **HDRG Series Features**

- Category I, II Quick Hitch Compatible
- All Welded Steel Frame Construction
- Cutting Edge Height Adjustment
- Recommended for up to 90 HP
- Four Position Adjustable Scarifier Shanks
- Dual Replaceable and Reversible Heat-treated Cutting Edges
- Available in Tractor Colors

### **HDRG SERIES ROAD GRADER SPECIFICATIONS**

<b>MODELS:</b>	<b>HDRG84</b>	<b>HDRG96</b>
<b>Hitch</b>	3-Pt. Cat I & II QH	
<b>Recommended HP</b>	90 (2WD), 70 (4WD)	
<b>Working Width</b>	84-inches	96-inches
<b>Side Panel Thickness</b>	3/16-inch	
<b>Front Main Beam</b>	4-inches x 4-inches x 3/8-inch	
<b>Rear Beam Construction</b>	4-inches x 4-inches x 1/4-inch	
<b>Skid Shoe Construction</b>	1/2-inch x 2 1/2-inches	
<b>Scarifier Shanks</b>	Four Position Shanks with Hardened Tips	
<b>Number of Scarifier Shanks</b>	6	8
<b>Cutting Edges</b>	1/2-inch x 6-inches Bolt on Replaceable & Reversible Heat Treated Blades	



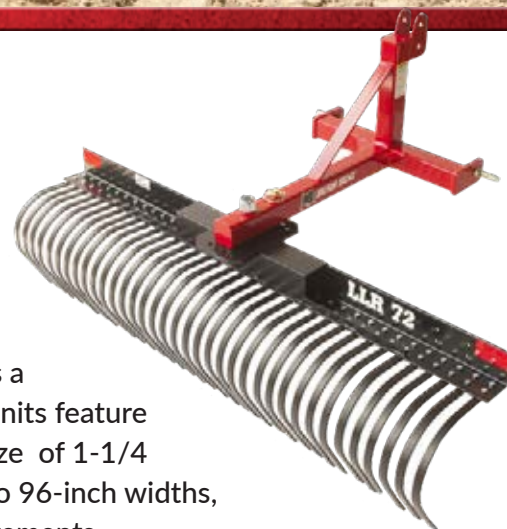
# LANDSCAPE RAKES

LLR & MLR  
SERIES

LLR60 / LLR72 / LLR84 / MLR72 / MLR84 / MLR96



Bush Hog®'s line of landscape rakes are the perfect tools for removing debris or giving an area that "groomed look." Perfect for jobs ranging from brush removal to grooming horse arenas, this tool is available in both a light duty model for tractors up to 30 PTO HP and a medium duty model for tractors up to 50 PTO HP. One-inch spacing between the heat-treated tines allows you to easily remove sticks, small rocks and other unwanted material. An optional gauge wheel is available for both models and the medium duty model offers a ratchet or hydraulic cylinder option to control angle adjustment. All units feature 360° pivot ability with angle adjustment of the rake, and a king pin size of 1-1/4 inches. With a Category I Std and Quick Hitch, and in sizes from 60 to 96-inch widths, there is sure to be a Bush Hog® Landscape Rake to match your requirements.



## LANDSCAPE RAKE SPECIFICATIONS

MODELS:	LLR60	LLR72	LLR84	MLR72	MLR84	MLR96
Width	60 in.	72 in.	84 in.	72 in.	84 in.	96 in.
Weight	205 lbs.	225 lbs.	225 lbs.	325 lbs.	345 lbs.	365 lbs.

SPECIFICATIONS SUBJECT TO CHANGE WITHOUT NOTICE



# PULVERIZERS

**PVB & PVS  
SERIES**

**PVB-600 / PVB-602 / PVB-660 / PVB-662 / PVB-720 / PVB-722 / PVB-840 / PVB-842 /  
PVS-600 / PVS-600 / PVS-660 / PVS-662 / PVS-720 / PVS-722 / PVS-840 / PVS-842**



After the heavy material has been removed, a Bush Hog® Pulverizer becomes the perfect tool to prepare a seedbed. The steel shanks break up compacted soil, while the heavy roller pulverizes large clumps and prepares the area for seeding. This tool is ideal for the professional landscaper/contractor who requires clean, level ground in one pass. Available in 60, 72, and 84 inch widths, with one or two rollers and featuring a Category I Std and Quick Hitch, there is sure to be a Bush Hog® Pulverizer to match your requirements.

## PULVERIZER SPECIFICATIONS

MODELS:	PVB-600 PVS-600	PVB-602 PVS-602	PVB-660 PVS-660	PVB-662 PVS-662	PVB-720 PVS-720	PVB-722 PVS-722	PVB-840 PVS-840	PVB-842 PVS-842
Width	60 in.		66 in.		72 in.		84 in.	
No. of Rollers	1	2	1	2	1	2	1	2
Weight	530 lbs.	640 lbs.	560 lbs.	680 lbs.	590 lbs.	720 lbs.	650 lbs	790 lbs.

SPECIFICATIONS SUBJECT TO CHANGE WITHOUT NOTICE

PVB = Bar Shanks      PVS = Spike Shanks

LANDSCAPE



# PLUGGERS

PG & MPG  
SERIES

PG-600 / PG-720 / MPG-600 / MPG-720



The Bush Hog® Pluggers are literally designed to get to “the root of the problem.” The 3/4-inch spoons provide excellent soil penetration, allowing nutrients and air to reach the turf’s root system. A 1-1/4 inch diameter shaft with greasable sleeves supports the independent hubs. The frame is designed as a weight box so that additional weight may be added to increase down pressure when the soil is heavily compacted. All models feature a Category 1 Std and Quick Hitch and are rated for tractors up to 60 PTO HP.

## PLUGGER SPECIFICATIONS

MODELS:	PG-600	PG-720	MPG-600	MPG-720
Width	60 in.	72 in.	60 in.	72 in.
Hub	8	10	12	
Weight	350 lbs.	390 lbs.	460 lbs.	500 lbs.

SPECIFICATIONS SUBJECT TO CHANGE WITHOUT NOTICE



# FERTILIZER AND SEED SPREADERS

FSP  
SERIES

FSP-500 / FSP-800



The Bush Hog® three point hitch fertilizer spreaders have bottom opening gates for accurate flow rates. Variable gate position openings and fine adjustments ensure material drops on different positions of the spinning disc. This produces a center, right and left pattern. The polyethylene hopper offers long lasting protection from the deteriorating effects of fertilizer. For further resistance to deterioration, the distribution fins are electroplated and the paint is powder coat for hardness and durability. The FSP models can also be used to distribute seeds. The FSP-500 has a weight capacity of 500 lbs, and the FSP-800 has a weight capacity of 800 lbs.

LANDSCAPE



# MANURE SPREADERS

MS  
SERIES

MS250G / MS500G / MS800G / MS500P / MS500P / MS1300P / MS1300X



LANDSCAPE





## Ground-Driven Manure Spreaders: For Vehicles Without PTO Capabilities

MS-G Manure Spreaders offer simplicity and reliability for applications where a PTO doesn't exist. Offering a full size range, MS-G ground drive units can be used with vehicles such as ATVs, UTVs or even lawn tractors. Traction implement tires are standard on GROUND DRIVE units to ensure the torque is there for a fine, consistent spread.

### **MS250G**

Recommended 15-25 HP



### **MS500G**

Recommended 15-30 HP

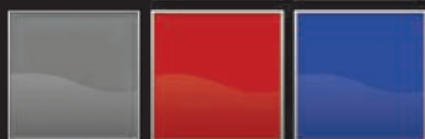


### **MS800G**

Recommended 20-45 HP



PICK A  
 COLOR  
 TO MATCH  
 YOUR  
 TRACTOR





## PTO Driven Manure Spreaders: For Vehicles with PTO Power

The PTO-driven MS-P Series manure spreaders offer increased power and spreading consistency combined with ease of use. PTO DRIVE models harness the power of your tractor to deliver capacities of 50, 80 and 130 bushels to your field. Connected by belt and pulley, the driveshaft and gear box deliver efficient power to the beaters.



### MS500P

Recommended 18-30 HP



### MS800P

Recommended 25-45 HP



### MS1300P

Recommended 45-75 HP



### MS1300X

Recommended 45-75 HP

MS1300X Model features large diameter retread tire designed for bigger tractors and smoother towing/spreading. Low-cost replacement using retreads

## MANURE SPREADER SPECIFICATIONS

MODELS: MS250G | MS500G | MS800G | MS500P | MS800P | MS1300P | MS1300X

Bushel Heaped Capacity	25 (31.25 cu.ft.)	50 (62.5 cu.ft.)	80 (100 cu.ft.)	50 (62.5 cu.ft.)	80 (100 cu.ft.)	130 (162.5 cu.ft.)	130 (162.5 cu.ft.)
Drive Type	Ground Drive			PTO Drive			
Tires/Bolts	6 x 12/5	7.6 x 15/5				11L-15SL/6	11R22.5/8
Paddles	8	10				10 Replaceable	
Total Weight (w/ tires)	510 lbs.	795 lbs.	920 lbs.	795 lbs.	920 lbs.	2180 lbs. (est)	330 (est) lbs.
Tongue Weight	34 lbs.	50 lbs.	56 lbs.	50 lbs.	56 lbs.	330 lbs. (est)	
Box Dimensions (LxWxH)	72" x 26" x 15"	89" x 32" x 17"	102" x 38" x 20"	89" x 32" x 17"	102" x 38" x 20"	130" x 48" x 23"	
Total Dimensions (LxWxH)	117" x 48" x 29"	117" x 48" x 29"	168" x 63" x 37"	156" x 57" x 35.5"	168" x 63" x 37"	214" x 79" x 42"	214" x 90" x 48"



# SKID STEER LOG SPLITTERS

LS  
SERIES

LS2024IS / LS2536IS / LS2024S / LS2536S / LS3124S / LS2024X



***LS2024IS (inverted)***  
20 Ton 24" Splitting Length



***LS2536IS (inverted)***  
25 Ton 36" Splitting Length



LANDSCAPE



## SKID STEER LOG SPLITTER SPECIFICATIONS

MODELS: LS2024IS   LS2536IS   LS2024S   LS2536S   LS3124S   LS2024X						
Cylinder Diameter/Stroke	4"/24"	4.5"/36"	4"/24"	4.5"/36"	5"/24"	4"/24"
Splitter Orientation	Inverse Horizontal	Inverse Horizontal	Horizontal	Horizontal	Horizontal	Horizontal & Vertical
Recommended Minimum Hydraulic Flow	10 GPM	13 GPM	10 GPM	13 GPM	16 GPM	10 GPM
Dimensions (LxWxH)	66" x 36" x 22"	96" x 36" x 22"	66" x 36" x 22"	90" x 36" x 22"	68" x 36" x 24"	96" x 36" x 26"
Weight	339 lbs.	585 lbs.	370 lbs.	680 lbs.	480 lbs.	375 lbs.
Average Cycle	6.62 seconds*	11.43 seconds*	6.62 seconds*	11.43 seconds*	9.73 seconds*	6.62 seconds*
Full Cycle	13.24 seconds*	22.86 seconds*	13.24 seconds*	11.43 seconds*	19.47 seconds*	13.24 seconds*
Optional 4 Way Wedge	W4130	W4130	W4120	W4130		W4120
Stripper Plates	Built-in		N/A			

\* Depends on flow from tractor/skidsteer



### LS2024S

20 Ton 24" Splitting Length



### LS2536S

25 Ton 36" Splitting Length



### LS3124S

31 Ton 24" Splitting Length



### LS2024X (horizontal and vertical)

20 Ton 24" Splitting Length



# XTREME CHIPPER SKID STEER WOOD CHIPPER

XC  
SERIES

XC42S



## *Hydraulically Powered Xtreme Chipper Skid Steer*

Get the most out of your equipment with the practical XC42S Skid Steer Mounted Wood Chipper. The hydraulically-driven XC42S is powered directly from the skid steer's external ports, providing plenty of chipping action. The XC42S is capable of chipping 4-inch diameter logs with its heavy-duty rotor and 2 hardened tool steel reversible cutting blades. The skid steer mount makes the XC42S easy to attach so you can switch from a bucket to chipper quickly and easily.

### **XC42S MODEL SPECIFICATIONS**

Diameter Capacity	4" (Max. 10" Slab)
Housing	4" x 10" Chipper Opening
Rotor	25" Rotor with 2 Knives at 74 lbs.
Hood Height	65" Discharge Hood Height
Total Weight	740 lbs.
Dimensions (LxWxH)	80" x 57" x 72"
Recommended Flow	25gpm
Flow Range	20-30gpm

LANDSCAPE





IF IT DOESN'T SAY  
**BUSH HOG**®  
IT JUST WON'T CUT IT™

2501 Griffin Avenue, Selma, Alabama 36703

Tel: 800-363-6096 | Fax: 334-874-2701

[www.bushhog.com](http://www.bushhog.com)

