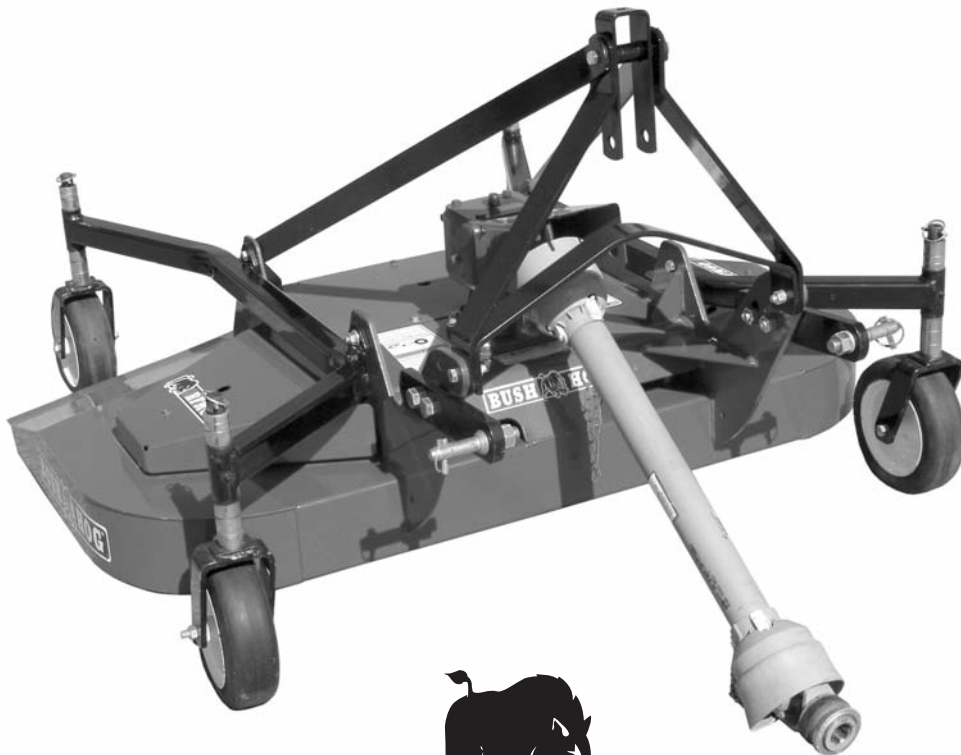


BUSH HOG[®]

LAND MAINTENANCE

REPAIR PARTS MANUAL

MODEL: RFM 60 REAR FINISHING MOWER
SECTION: 83



BUSH HOG[®]

2501 GRIFFIN AVE. • SELMA, AL 36703
(334) 872 6261 • (334) 874 2700
PARTS ORDERING 1 800 304 2836
FAX 1 800 572 1784
WWW.BUSHHOG.COM



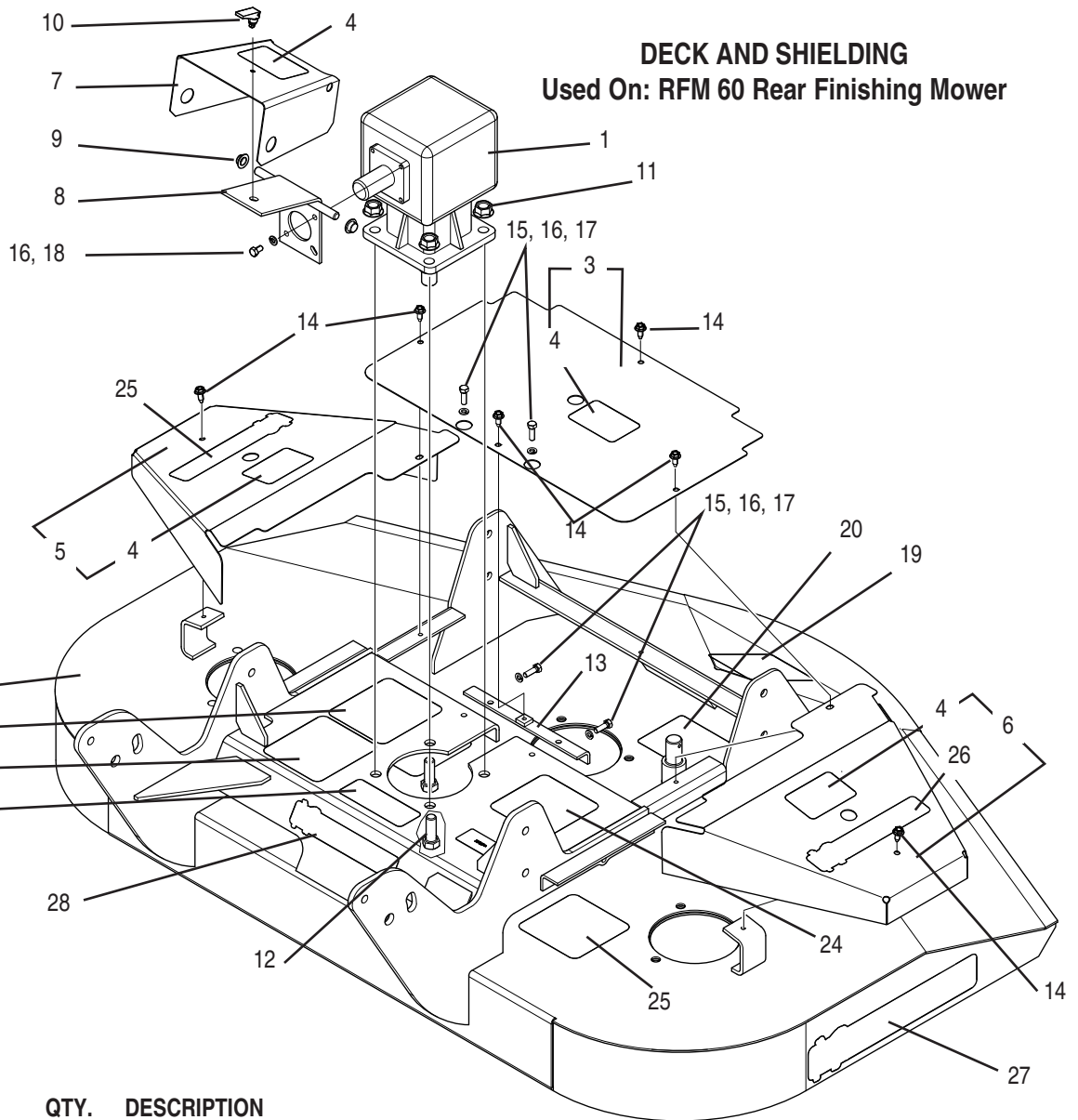
Revisions November, 2009

RFM60

Rear Finishing Mower

Table of Contents

CONTENTS	PAGE
Deck, Decals and Shielding	83-1-1
Belt, Pulleys, Blades	83-1-2
Blade Spindle	83-1-3
Gear Box Assy.	83-1-4
Driveshaft Assy. (Binacchi)	83-1-5
Driveshaft Assy. (Comer)	83-1-6
Driveshaft Assy. (Bondioli & Pavesi).....	83-1-10
Mast, Lift Arms, Wheel Mounts	83-1-7
Caster Wheel Assemblies	83-1-8
Front Roller Kit	83-1-9

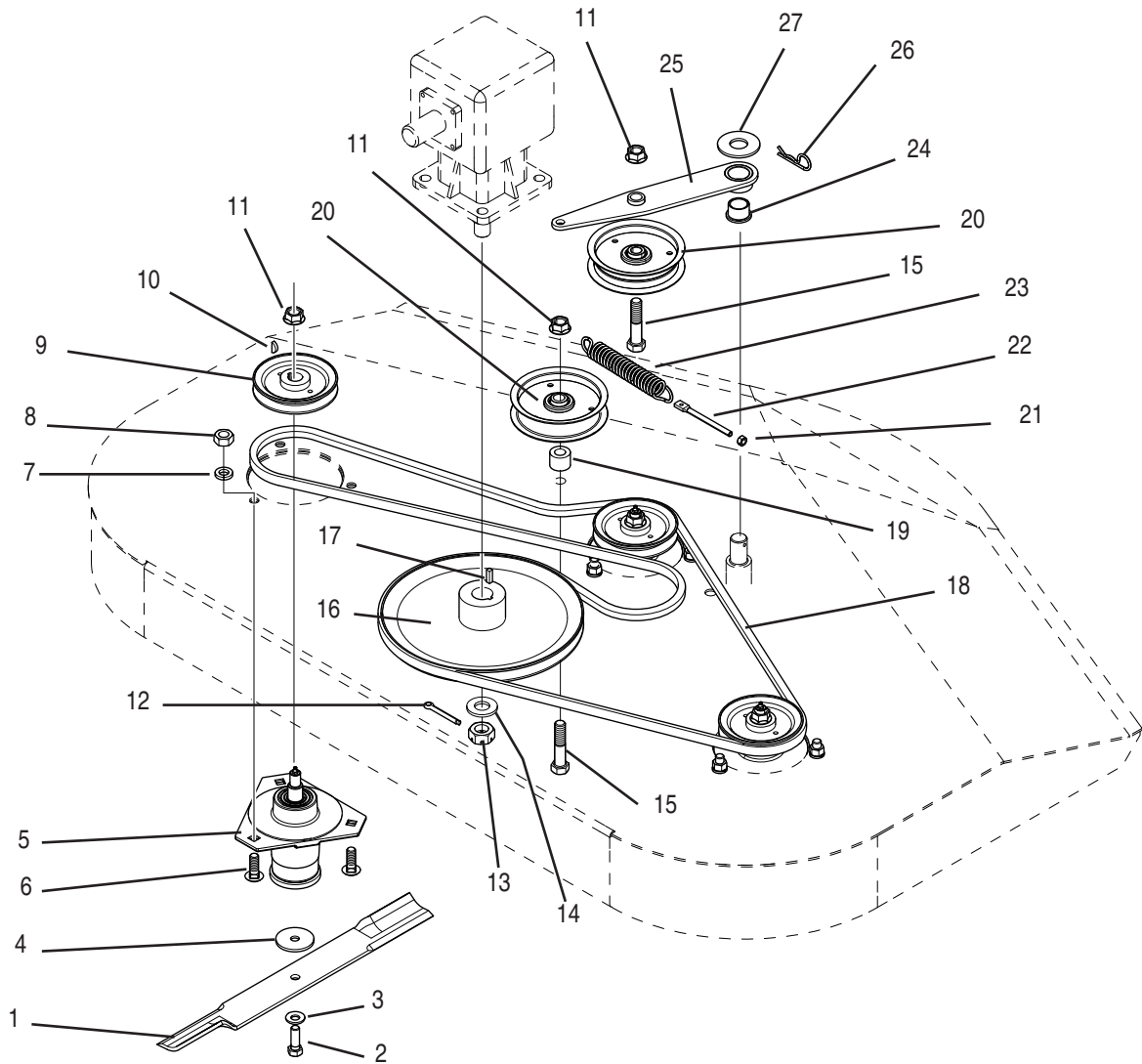


DECK AND SHIELDING
Used On: RFM 60 Rear Finishing Mower

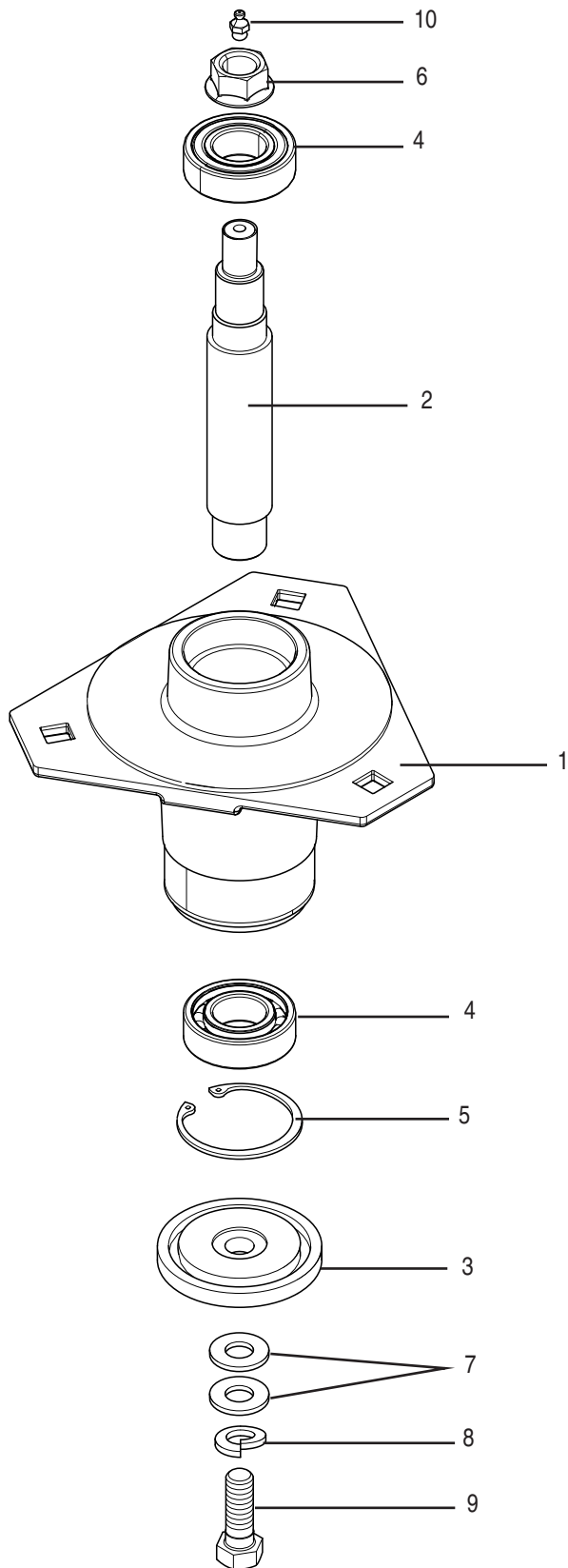
REF. NO.	PART NO.	QTY.	DESCRIPTION
1	50044135	1	Gearbox Assembly
2	50055145	1	Deck w/Decals Bush Hog Red
	50055144	1	Deck w/Decals Kubota Orange
	50055143	1	Deck w/Decals J.D. Green
	50055142	1	Deck w/Decals N.H. Blue
3	50055149	1	Center Shield w/Decal B.H. Red
	50055148	1	Center Shield w/Decal Kub. Orange
	50055147	1	Center Shield w/Decal J.D. Green
	50055146	1	Center Shield w/Decal N.H. Blue
4	50012615	4	Decal, Warning
5	50055153	1	Shield, R.H. w/Decal, B.H. Red
	50055152	1	Shield, R.H. w/Decal, Kub. Orange
	50055151	1	Shield, R.H. w/Decal, J.D. Green
	50055150	1	Shield, R.H. w/Decal, N.H. Blue
6	50055157	1	Shield, L.H. w/Decal, B.H. Red
	50055156	1	Shield, L.H. w/Decal, Kub. Orange
	50055155	1	Shield, L.H. w/Decal, J.D. Green
	50055154	1	Shield, L.H. w/Decal, N.H. Blue
7	98251	1	Shield
8	50031934	1	Shield Mount Brkt.
9	50014067	2	Cap, Friction

REF. NO.	PART NO.	QTY.	DESCRIPTION
10	98284	1	Latch, Swell
11	20414	4	Lock Nut 5/8" Flanged
12	15165	4	Capscrew 5/8" x 1-3/4" Gr.5
13	50055135	1	Bracket, Support
14	50043225	6	Capscrew 5/16" x 3/4"
15	-----	4	Capscrew 5/16" x 1" Gr.5
16	-----	8	Lockwasher 5/16"
17	-----	5	Hex Nut 5/16"
18	44215	4	Capscrew M8 x 1.25 x 15
19	50042282	1	Danger Decal
20	50053337	1	Belt Installation Dia. Decal
21	50042284	1	Decal, Warning
22	50042285	1	Decal, Warning
23	50042281	1	Decal, Caution - 540 RPM
24	50042283	1	Decal, Warning
25	50012616	3	Decal, Danger (Shield Missing)
26	50050224	2	Model Decal, RFM 60
27	50057095	2	Decal, Bush Hog Logo
28	50057094	2	Decal, Bush Hog Logo

BELT, PULLEYS, BLADES & SPINDLES
Used On: RFM 60 Rear Finishing Mower



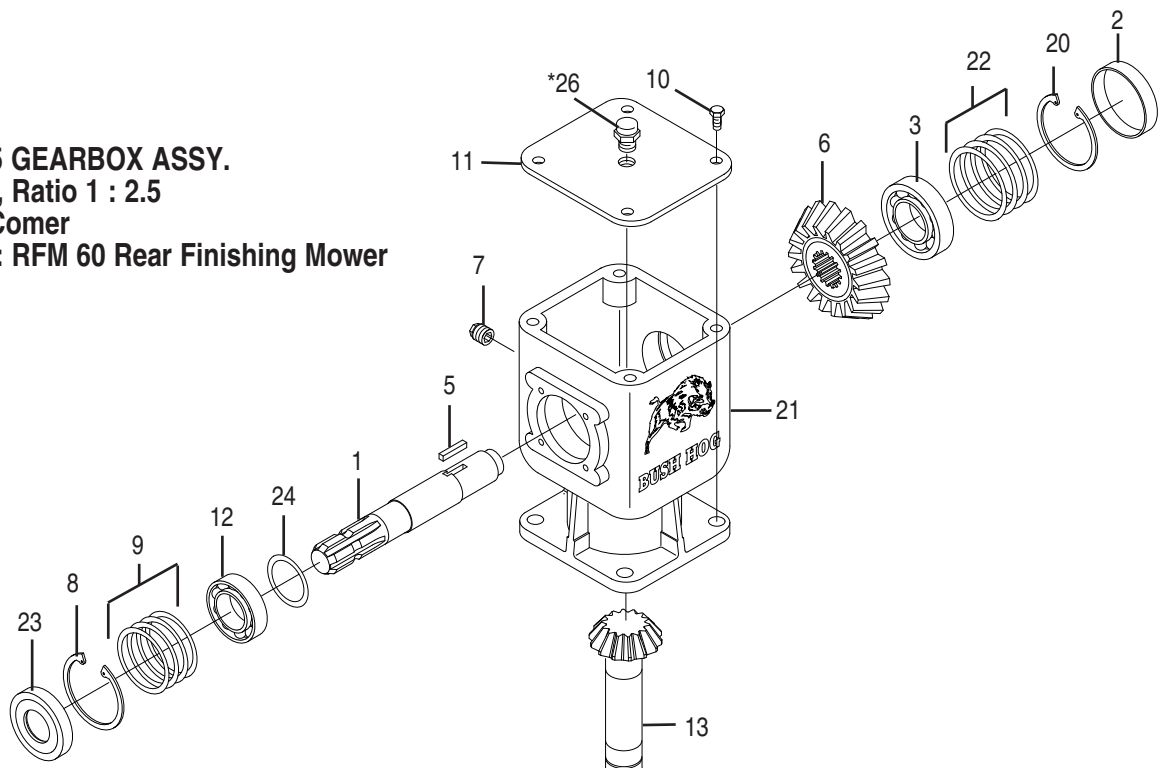
REF. NO.	PART NO.	QTY.	DESCRIPTION	REF. NO.	PART NO.	QTY.	DESCRIPTION
1	82324	3	Blade, CW Uplift	15	-----	2	Capscrew 5/8" x 3" Gr.5
2	44508	3	Capscrew 1/2" x 1-1/2" Gr. 8 NF	16	50025107	1	Sheave, 12"
3	44040	3	Safety Washer, Heavy Duty	17	19455	1	Square Key .25" x.25" x.875"
4	97658	A/R	Spacer -.1345" Thick	18	50053331	1	Belt 136.9"
5	50048640	3	Spindle Assy.	19	50051435	1	Bushing
6	5161614	9	Carriage Bolt 1/2" x 1-1/2" Gr.5	20	88663	1	Pulley, Idler
7	-----	9	Lockwasher 1/2"	21	-----	1	Hex Nut 5/16"
8	-----	9	Hex Nut 1/2"	22	50051288	1	Tension Rod
9	50045587	3	Pulley, 5" EOD	23	50008038	1	Tension Spring
10	88753	3	Woodruff Key #606	24	88691	1	Bushing, Flanged-Bronze
11	20414	5	Locknut 5/8", Flanged	25	50051433	1	Idler Arm Weldment
12	70699	1	Cotter Pin B5 x 50	26	50005860	1	Pin
13	50025329	1	Castle Nut M24 x 2	27	15908	1	Flatwasher 1"
14	70695	1	Flat Washer M 25 x 44 x 4				



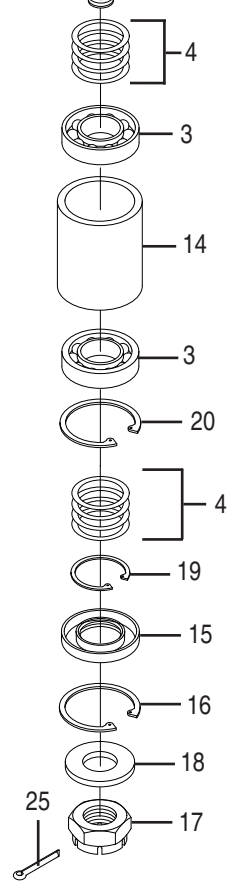
**50048640 SPINDLE ASSEMBLY
USED ON: RFM 60 Rear Finishing Mower**

REF. NO.	PART NO.	QTY.	DESCRIPTION
1	50041475	1	Spindle Housing
2	50045469	1	Shaft
3	88754	1	Blade Washer
4	88749	2	Bearing, 25mm
5	97685	1	Retaining Ring
6	45075	1	Hex Nut 5/8"
7	45059	2	Flatwasher 1/2"
8	44040	1	Safety Washer
9	44508	1	Capscrew 1/2" x 1-1/2" Gr. 8 NF
10	449	1	Grease Fitting

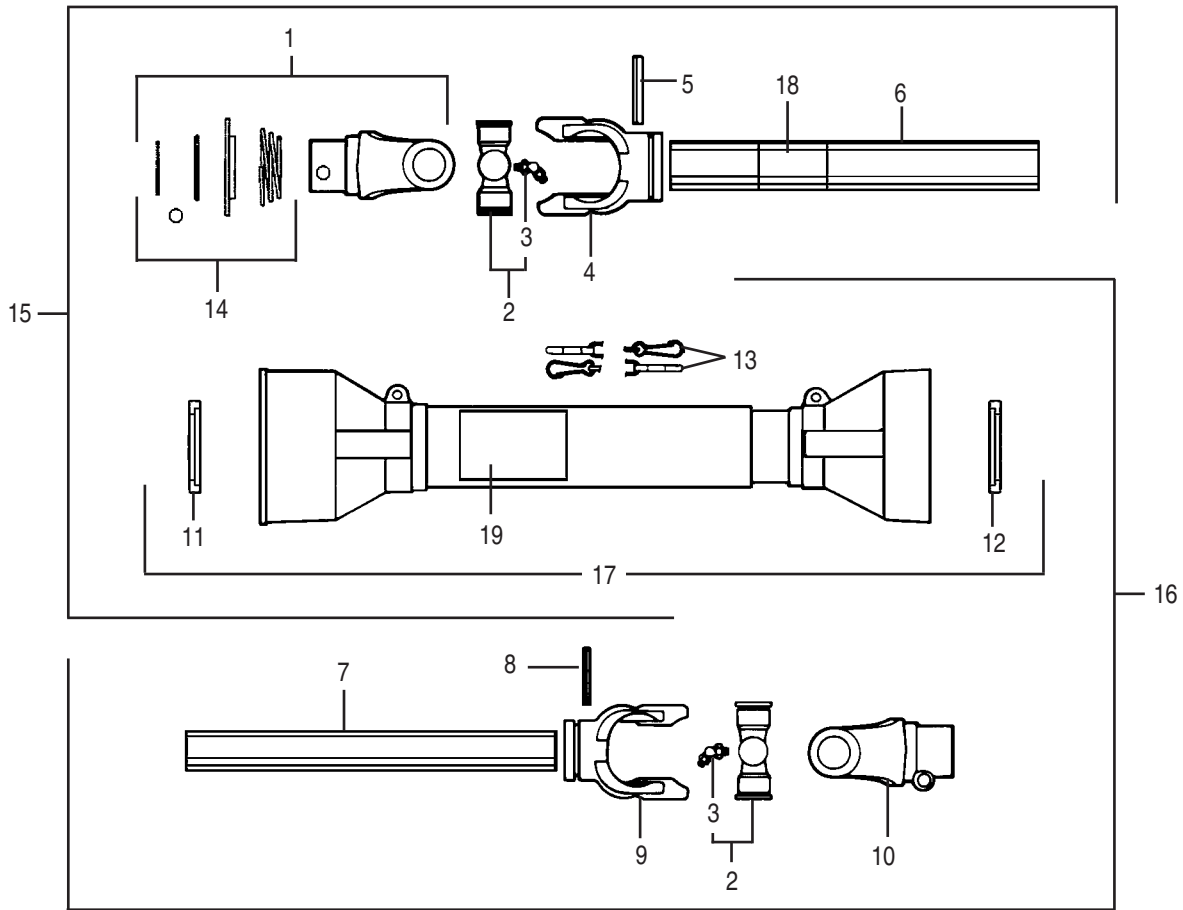
50044135 GEARBOX ASSY.
540 RPM, Ratio 1 : 2.5
Mfd. by Comer
Used On: RFM 60 Rear Finishing Mower



REF. NO.	PART NO.	QTY.	DESCRIPTION
1	50025326	1	Input Shaft 1-3/8" Z6
2	70279	1	Oil Cap
3	71453	3	Ball Bearing 3207
4	70329	2	Shim 35.3 x 48 x 0.3
	70330	2	Shim 35.3 x 48 x 0.4
	70331	2	Shim 35.3 x 48 x 0.5
	70332	2	Shim 35.3 x 48 x 1.3
5	70226	1	Parallel Key 10 x 8 x 30
6	50025327	1	Crown Gear Z30
7	70292	2	3/8" GAS Solid Plug
8	50044136	1	Snap Ring 62 x 65 x 3
9	70628	1	Shim 55.3 x 61.7 x 0.3
	70629	1	Shim 55.3 x 61.7 x 0.4
	70630	1	Shim 55.3 x 61.7 x 0.5
	70631	1	Shim 55.3 x 61.7 x 1.0
10	70618	4	Bolt M10 x 20
11	50044137	1	Cover
12	70129	1	Ball Bearing 6007
13	50025330	1	Output Pinion Z12
14	50025328	1	Spacer 64 x 70 x 59.7
15	70134	1	Double Lip Seal
16	70600	1	Snap Ring SB 72
17	50025329	1	Castle Nut M24
18	70695	1	Flatwasher 25 x 44 x 4
19	70110	1	Snap Ring 33 x 35 x 1.5
20	70133	2	Snap Ring 72 x 75 x 2.5
21	50044138	1	Casing
22	70639	1	Shim 60.3 x 71.7 x 0.3
	70640	1	Shim 60.3 x 71.7 x 0.4
	70641	1	Shim 60.3 x 71.7 x 0.5
	70642	1	Shim 60.3 x 71.7 x 1.0
23	50044139	1	Oil Seal
24	50044140	1	Spacer 35.1 x 51 x 5.5
25	70699	1	Cotter Pin B5 x 50
*26	*81572	1	Vent Plug



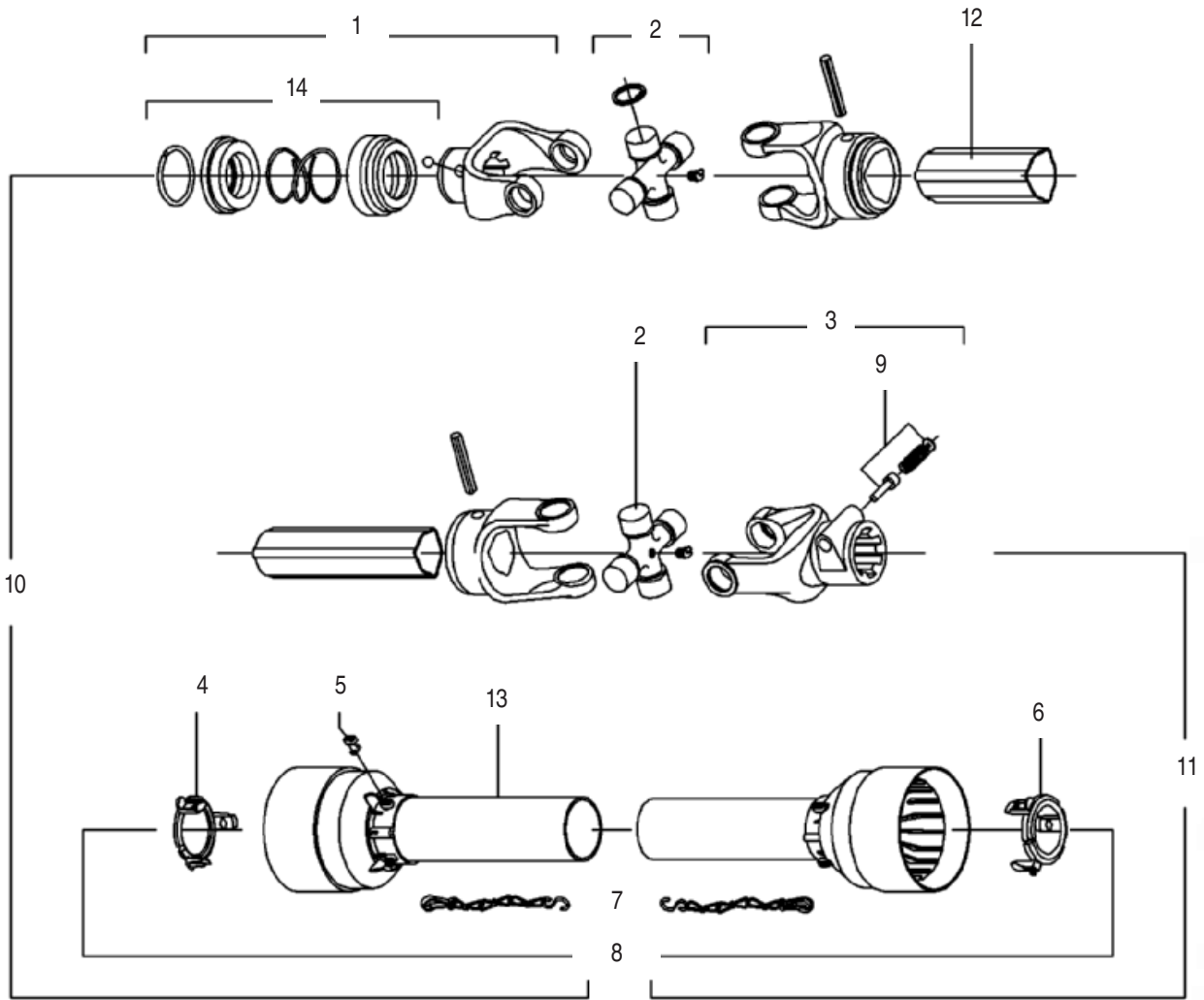
*Ref. No. 26 - 81572 is not part of the gearbox assembly and must be ordered separately.



**50034246 DRIVESHAFT ASSEMBLY
(OBSOLETE REPLACED BY 50063616 DRIVESHAFT ASSEMBLY)**

**540 RPM, 1-3/8" – 6 spline, Mfd. by Binacchi
Binacchi Size 4, ASAE Size 3
Used On: RFM Rear Finishing Mower**

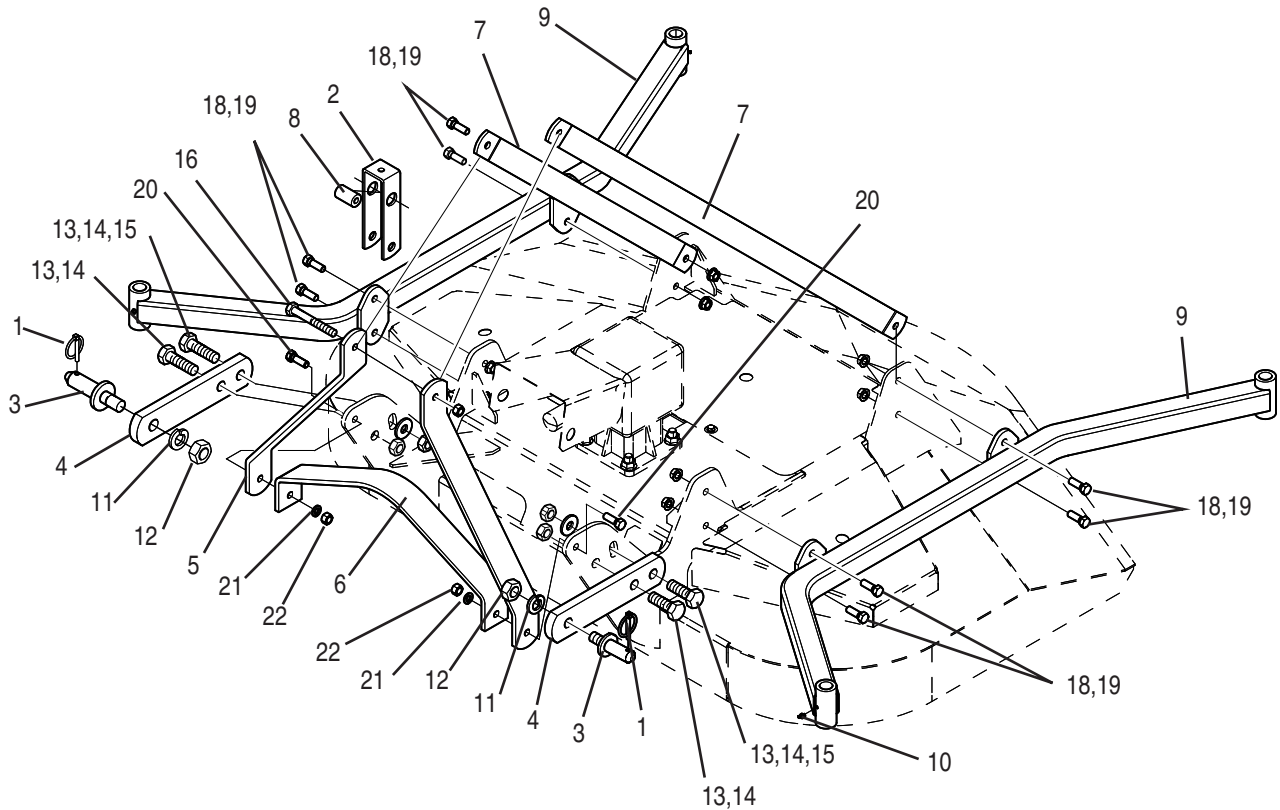
REF. NO.	PART NO.	QTY.	DESCRIPTION
1	50035260	1	Complete Collar Yoke
2	64694	2	Cross Journal Set
3	63956	2	Grease Nipple
4	78571	1	Outer Tube Yoke
5	78577	1	Flexible Pin
6	82800	1	Outer Tube
7	82801	1	Inner Tube
8	78578	1	Flexible Pin
9	78570	1	Inner Tube Yoke
10	64692	1	Outer Yoke
11	90008	1	Outer Bearing
12	50042832	1	Inner Bearing
13	64814	2	Chain
14	50035261	1	Ball Collar Kit
15	50035268	1	Half Shaft, Outer
16	50035295	1	Half Shaft, Inner
17	90012	1	Safety Guard
18	78786	1	Danger Decal
19	78608	1	Danger Decal



50053120 DRIVESHAFT ASSEMBLY
 540 RPM, 1-3/8" – 6 spline, Mfd. by Comer
 Size 40, ASAE Size 3
 Used On: RFM Rear Finishing Mower

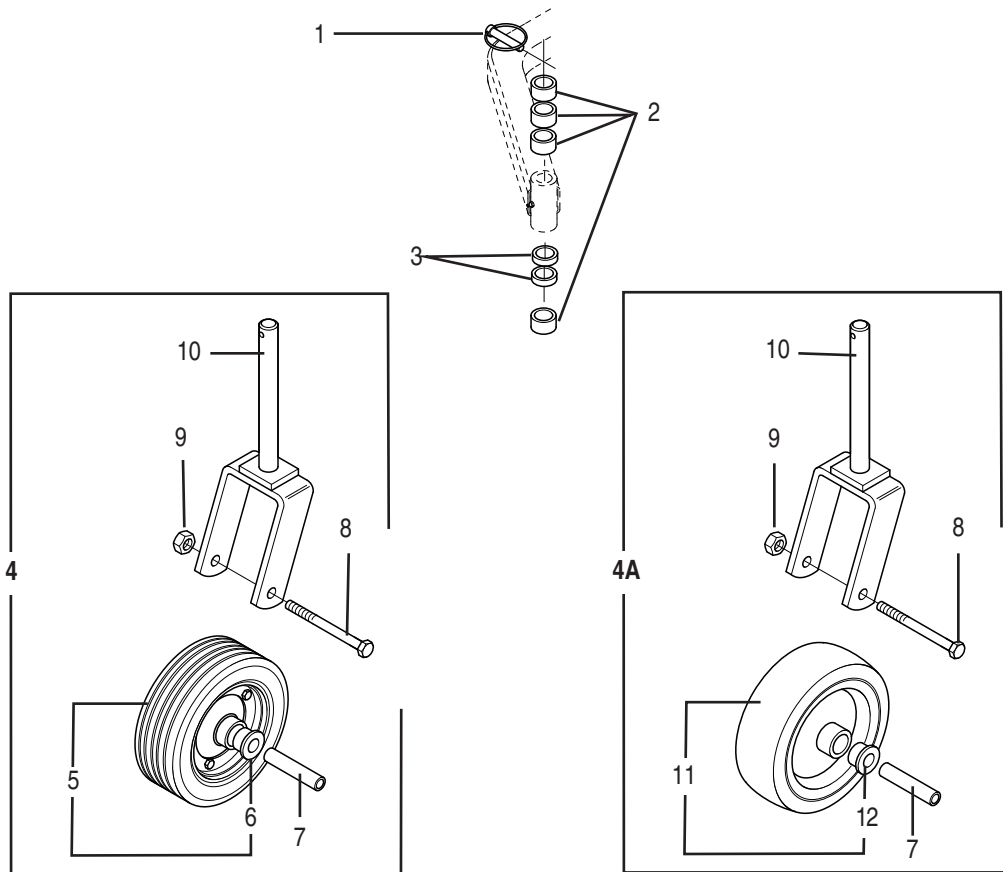
REF. NO.	PART NO.	QTY.	DESCRIPTION
1	76711	1	Collar Yoke, Complete
2	64604	2	Cross Bearing Kit
3	76126	1	Push Pin Yoke Assy.
4	50053143	1	Retainer Collar, Outer Shield
5	50050289	6	Bolt, Shield
6	50053244	1	Retainer Collar, Inner Shield
7	64814	2	Safety Chains
8	50053145	1	Shield Assy. Complete w/Manual
9	76062	1	Push Pin Set
10	50053146	1	Half Shaft Assy. -Female
11	50053147	1	Half Shaft Assy.- Male
12	78786	1	Decal, Danger Outer Tube
13	78608	1	Decal, Danger Inner Tube
14	50017480	1	Collar Kit, for 1-3/8" yoke

**MAST, LIFT ARMS, WHEEL MOUNTS & RELATED PARTS
USED ON: RFM 60 Rear Finishing Mower**



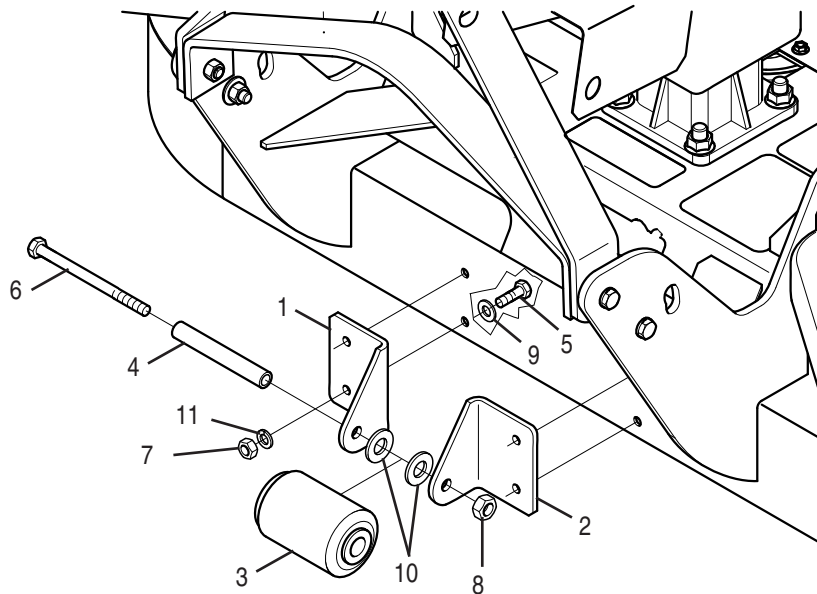
REF. NO.	PART NO.	QTY.	DESCRIPTION
1	20312	2	Lynch Pin
2	82815	1	Flex Link
3	63765	2	Lift Pin Cat. 1
4	50028325	2	Lift Arm
5	50053755	2	Mast
6	50053756	1	Cross Brace
7	50055140	2	Mast Support
8	82817	1	Pivot Tube
9	50051290	2	Wheel Mount Assy.
10	449	4	Grease Fitting
11	15824	2	Lockwasher 7/8"
12	44061	2	Hex Nut 7/8"
13	-----	4	Capscrew 3/4" x 2-1/4" Gr.5
14	20638	4	Locknut 3/4"
15	-----	2	Flatwasher 3/4"
16	-----	1	Capscrew 1/2" x 5" Gr.5
17	15554	1	Locknut 1/2"
18	-----	8	Capscrew 1/2" x 1-1/2" Gr.5
19	44998	8	Locknut, 1/2" Flanged
20	-----	2	Capscrew 1/2" x 2" Gr.5
21	-----	2	Lockwasher 1/2"
22	-----	2	Hex Nut 1/2"

CASTER WHEEL ASSEMBLIES USED ON: RFM60 Rear Finishing Mower



REF. NO.	PART NO.	QTY.	DESCRIPTION
1	20312	4	Lynch Pin
2	84613	16	Spacer 1"
3	84612	8	Spacer 1/2"
4	88683	1	Solid Wheel and Fork Assy.
4A	50024544	1	Semi Pneumatic Wheel and Fork Assy.
5	87750	1	Solid Tire Assy.
6	85398	2	Bushing for Solid Tire
7	62574	1	Sleeve
8	20496	1	Capscrew 1/2" x 5-1/2" Gr.5
9	15554	1	Lock Nut 1/2"
10	88695	1	Fork Weldment
11	50024543	1	Semi Pneumatic Tire Assy.
12	50024566	2	Bushing for Semi Pneumatic Tire

50059787 FRONT ROLLER Model: RFM60 Rear Finishing Mower

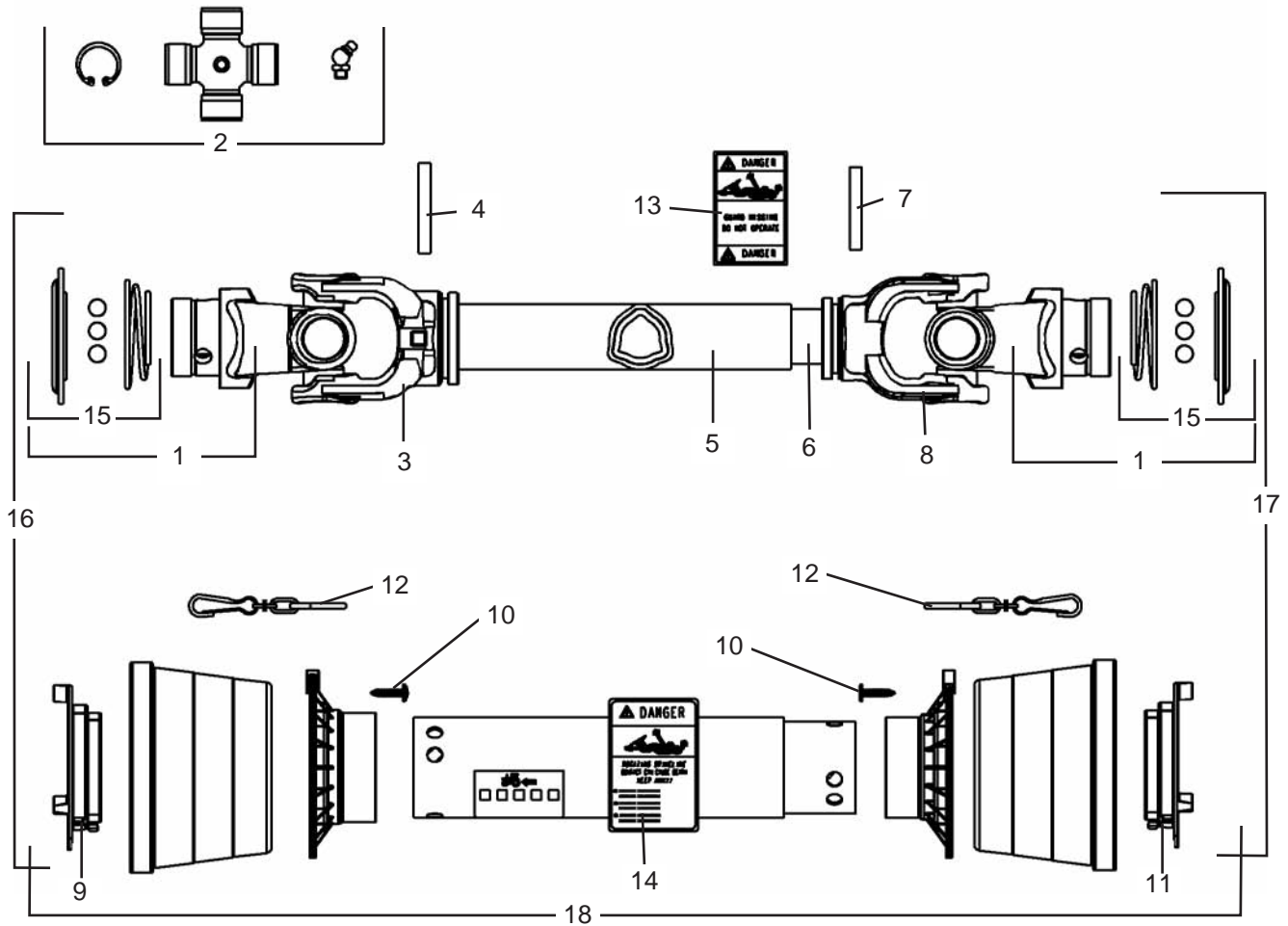


Bush Hog
Assembly
Instructions

12

REF. NO.	PART NO.	QTY.	DESCRIPTION
1	50059784	1	Roller Mount, Right
2	50059785	1	Roller Mount, Left
3	79057	1	Roller
4	50021170	1	Sleeve
5	—	4	Capscrew 3/8" x 1-1/4"
6	20580	1	Capscrew 1/2" x 6-1/2"
7	—	4	Hex Nut 3/8"
8	15554	1	Locknut 1/2"
9	—	4	Flatwasher 3/8"
10	—	2	Flatwasher 3/4"
11	—	4	Lockwasher 3/8"
12	50059786	1	Instruction Sheet

50063616 DRIVE SHAFT ASSEMBLY
 (Replaces the 50034246 Driveshaft Assy.)
ASAE Size 3
540 RPM, 1-3/8" - Spline Tractor
 Mfd. by Bondioli & Pavesi
 RFM 60 Finishing Mower



REF. NO.	PART NO.	QTY.	DESCRIPTION
1	50064902	2	Ball Collar Yoke Assy.
2	64964	2	Cross Bearing Kit
3	78571	1	Yoke Outer Tube
4	78577	1	Roll Pin for Outer Tube
5	50064906	1	Outer Tube
6	50064907	1	Inner Tube
7	78578	1	Roll Pin Inner Tube
8	78570	1	Yoke for Inner Tube
9	50064911	1	Outer Shield Bearing

REF. NO.	PART NO.	QTY.	DESCRIPTION
10	71404	6	Self Tapping Screw
11	50064912	1	Inner Shield Bearing
12	50064890	2	Shield Chain
13	78786	1	Danger Decal, Outer Tube
14	78608	1	Danger Decal, Inner Tube
15	50064645	2	Ball Collar Kit
16	50064914	1	Outer Half Assy.
17	50064940	1	Inner Half Assy.
18	50064916	1	Complete Shield Kit