

# **BUSH HOG<sup>®</sup>**

## **LAND MAINTENANCE REPAIR PARTS MANUAL**

**MODEL: RZ160**

**SECTION: 86**



**BUSH HOG<sup>®</sup>**

2501 GRIFFIN AVE. • SELMA, AL 36703  
(334) 872-6261 • (334) 874-2700  
PARTS ORDERING 1-800-304-2836  
FAX 1-800-572-1784  
WWW.BUSHHOG.COM



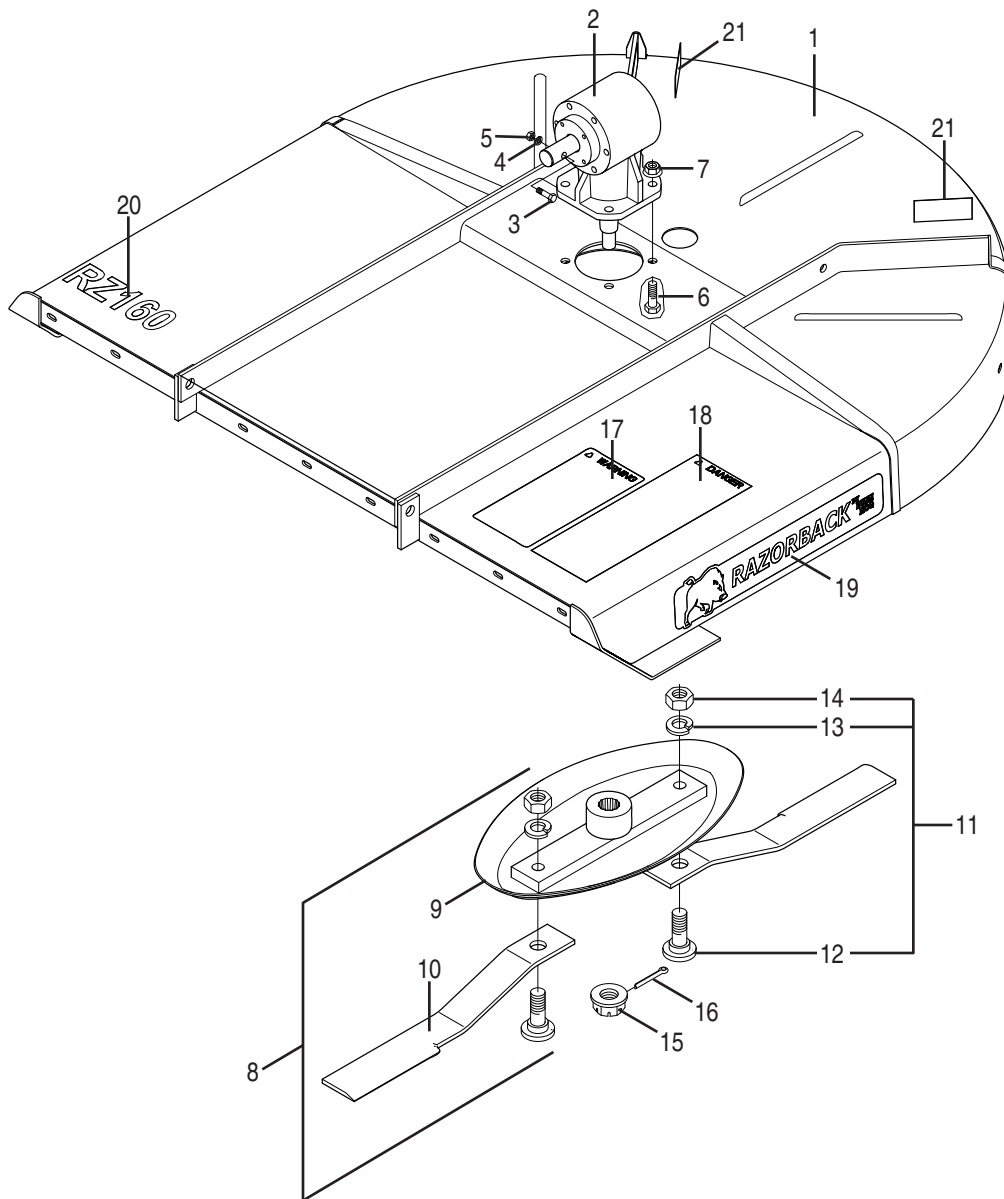
Revised November, 2009

# RZ160 RAZORBACK

## ALPHABETICAL INDEX

<b>CONTENTS</b>	<b>PAGE</b>
Base Assembly .....	86-1-1
Blade & Blade Holder Assembly .....	86-1-1
Caster Assemblies .....	86-5-2
Chains, Safety .....	86-2-1
Driveshaft Assemblies .....	86-4-1 through 86-4-3
Decals .....	See Base Assembly
Gearbox Assembly .....	86-3-1
Hitch Assembly .....	86-5-1
Tail Wheel Frame.....	86-5-1

### RZ160 DECK ASSEMBLY

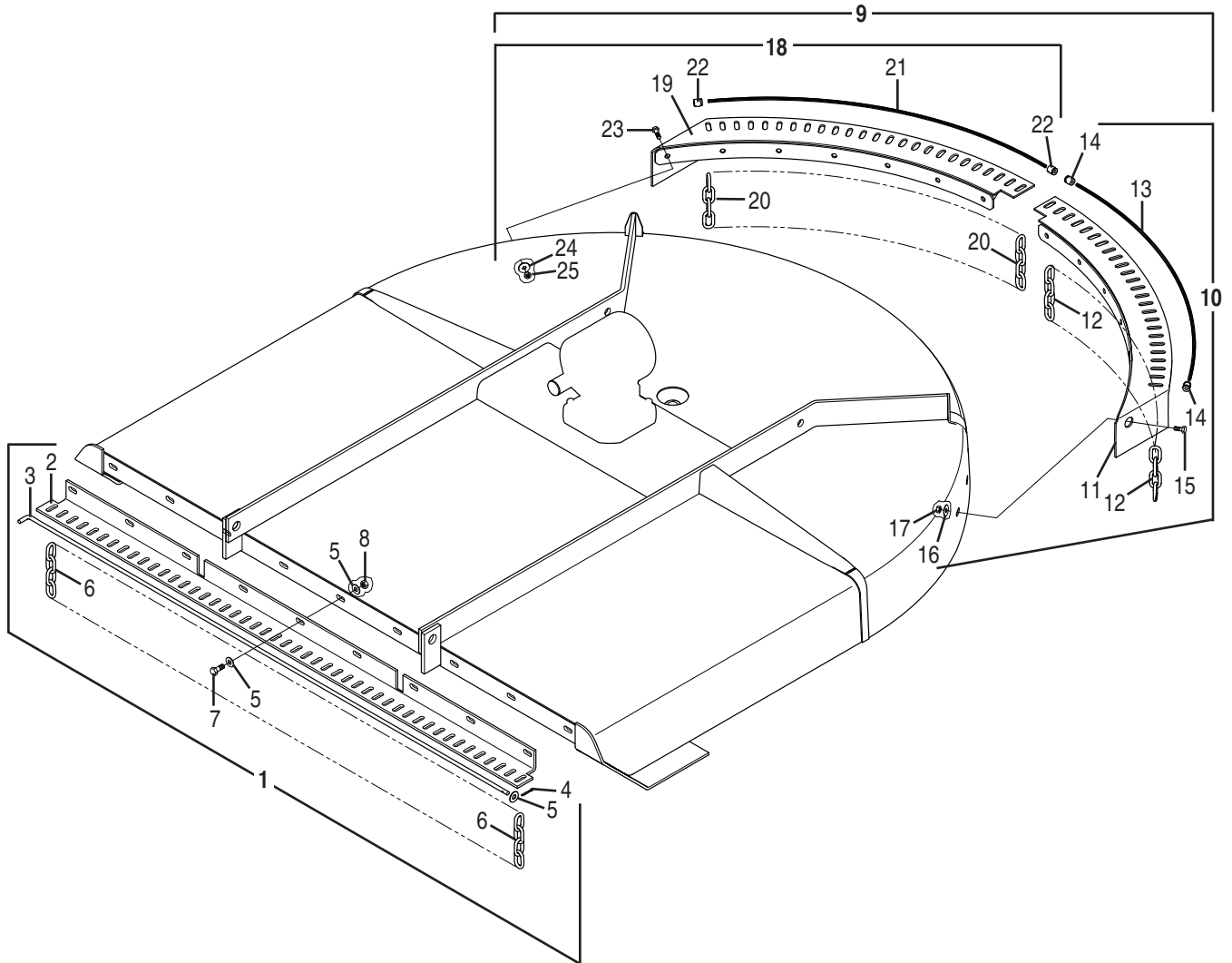


REF. NO.	PART NO.	QTY.	DESCRIPTION
1	50060436	1	Deck with Decals
2	00786192	1	Gearbox Assembly
3	—	1	Cap screw 1/2" x 3"
4	—	1	Lockwasher 1/2"
5	—	1	Hex Nut 1/2"
6	—	4	Cap screw 5/8" x 2" G5
7	20414	4	Locknut 3/8"
8	50060437	1	Blade Pan Assembly
9	50056693	1	Blade Pan Weldment
10	81395	2	Blade, 5'
11	66516	2	Blade Bolt Kit

REF. NO.	PART NO.	QTY.	DESCRIPTION
12	1259	2	Blade Bolt
13	—	2	Lockwasher 7/8"
14	44061	2	Hex Nut 7/8" NF, Class 2B
15	88873	1	Hex Nut, Slotted 1"
16	81648	1	Cotter Pin 5 x 50
17	50029419	1	Sheet Decal
18	50029417	1	Sheet Decal
19	50060415	2	Razorback Decal
20	50060404	1	RZ160 Decal
21	50031213	2	Red Reflector



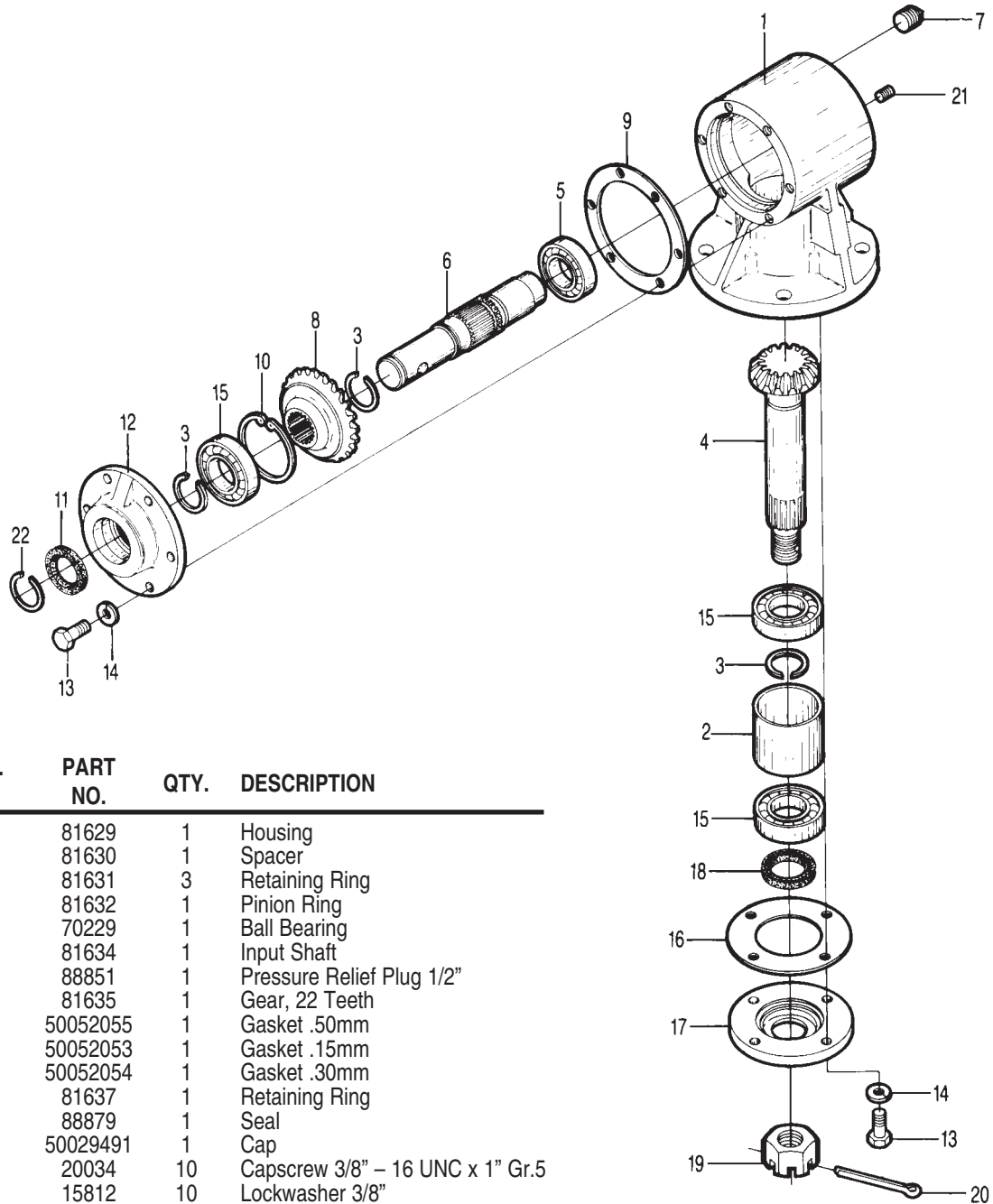
## RZ160 FRONT & REAR CHAINS



REF. NO.	PART NO.	QTY.	DESCRIPTION	REF. NO.	PART NO.	QTY.	DESCRIPTION
	<b>50060443</b>	1	<b>Front &amp; Rear Chains Kit (1 &amp; 9)</b>	13	50060423	1	Chain Cable 7 x 7
1	<b>50060420</b>	1	<b>Front Chains Kit (2-8)</b>	14	50050408	2	Stop Sleeve
2	50060428	1	Chain Bracket	15	—	7	Capscrew 3/8" x 1" Gr.5
3	50060429	1	Retainer Rod	16	—	7	Flatwasher 3/8"
4	15662	1	Cotter Pin, 1/8" x 1"	17	20363	7	Locknut 3/8"
5	—	19	Flatwasher 3/8"	<b>18</b>	<b>50060421</b>	1	<b>Rear Chains Assembly, R.H.</b>
6	50053111	47	Chain, 4 Link	19	50060430	1	Rear Chain Weldment, R.H.
7	—	9	Capscrew 3/8" x 1" Gr.5	20	50053111	25	Chain, 4 Link
8	20363	9	Locknut 3/8"	21	50060423	1	Chain Cable 7 x 7
<b>9</b>	<b>50060444</b>	1	<b>Rear Chains Kit</b>	22	50050408	2	Stop Sleeve
<b>10</b>	<b>50060422</b>	1	<b>Rear Chains Assembly, L.H.</b>	23	—	7	Capscrew 3/8" x 1" Gr.5
11	50060431	1	Rear Chain Weldment, L.H.	24	—	7	Flatwasher 3/8"
12	50053111	25	Chain, 4 Link	25	20363	7	Locknut 3/8"



**RZ160**  
**00786192 GEARBOX ASSEMBLY**  
**Gear Ratio 1:47:**

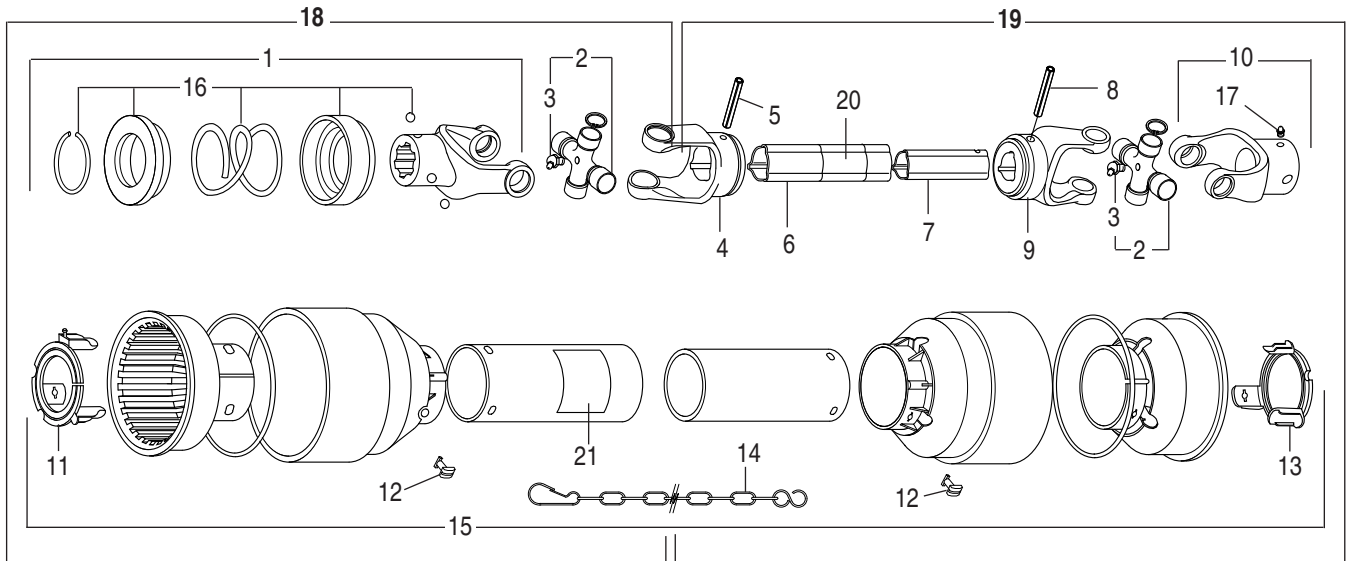


REF. NO.	PART NO.	QTY.	DESCRIPTION
1	81629	1	Housing
2	81630	1	Spacer
3	81631	3	Retaining Ring
4	81632	1	Pinion Ring
5	70229	1	Ball Bearing
6	81634	1	Input Shaft
7	88851	1	Pressure Relief Plug 1/2"
8	81635	1	Gear, 22 Teeth
9	50052055	1	Gasket .50mm
	50052053	1	Gasket .15mm
	50052054	1	Gasket .30mm
10	81637	1	Retaining Ring
11	88879	1	Seal
12	50029491	1	Cap
13	20034	10	Capscrew 3/8" - 16 UNC x 1" Gr.5
14	15812	10	Lockwasher 3/8"
15	70256	3	Ball Bearing
16	50052058	1	Gasket .50mm
	50052056	1	Gasket .15mm
	50052057	1	Gasket .30mm
17	81643	1	Cap
18	81644	1	Seal
19	88873	1	Hex Nut, Slotted 1"
20	81648	1	Cotter Pin
21	69	1	Pipe Plug
22	81445	1	Retaining Ring



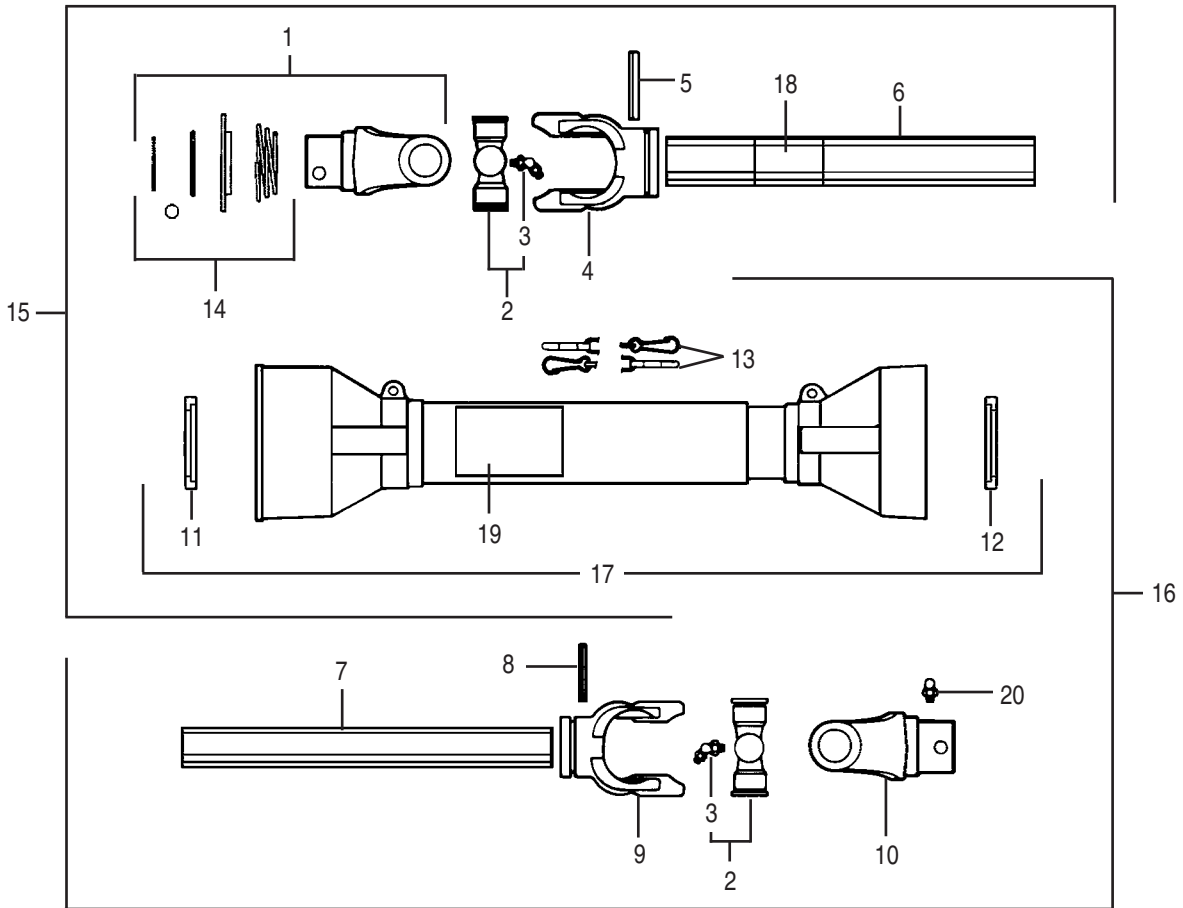


**76739 DRIVESHAFT ASSEMBLY**  
**540 RPM, 1-3/8" - Spline, Mfd. by Comer / EG**  
**RZ160**



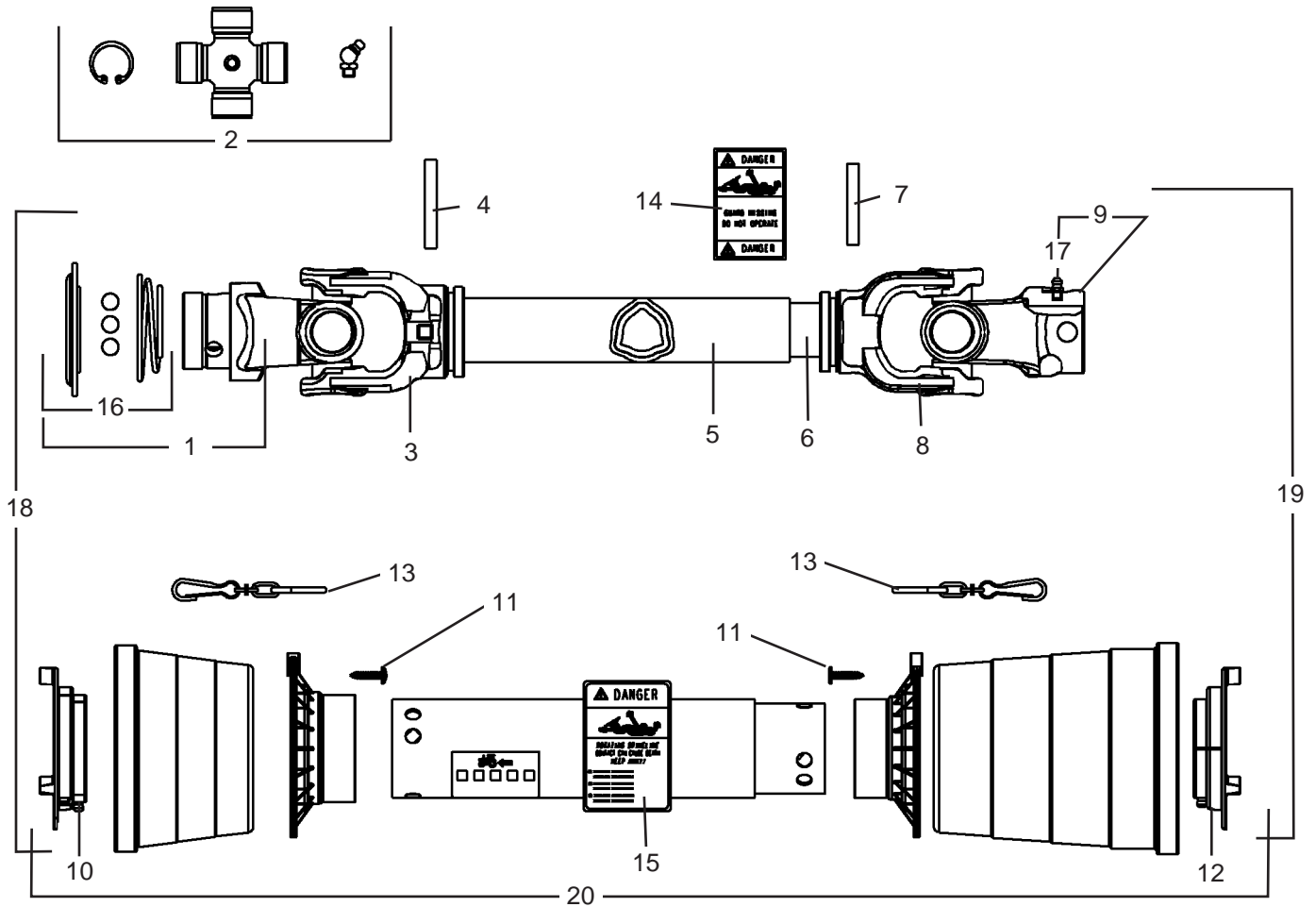
REF. NO.	PART NO.	QTY.	DESCRIPTION
1	76711	1	Ball Collar Yoke
2	64694	2	Cross Journal Set
3	63956	2	Grease Nipple
4	78571	1	Outer Yoke
5	78577	1	Roll Pin for Outer Tube
6	82800	1	Outer Tube
7	82801	1	Inner Tube
8	78578	1	Roll Pin for Inner Tube
9	78570	1	Inner Yoke
10	81447	1	Yoke w/ Grease Nipple
11	76192	1	Guard Retaining Collar, Outer
12	87992	6	Bolt
13	76191	1	Guard Retaining Collar, Inner
14	64814	2	Safety Chain
15	76138	1	Complete Shield w/ Instr.
16	50017480	1	Ball Collar Kit 1-3/8"
17	63946	1	Grease Nipple
18	<b>76808</b>	<b>1</b>	<b>Half Female Shaft w/ Shield</b>
19	<b>76100</b>	<b>1</b>	<b>Half Male Shaft w/ Shield</b>
20	78786	1	Danger Decal, Outer Tube
21	78608	1	Danger Decal, Outer Shield

**50034247 DRIVESHAFT ASSEMBLY  
(REPLACED BY 50063617 DRIVESHAFT ASSEMBLY)  
540 RPM, 1-3/8" – 6 spline, Mfd. by Binacchi  
RZ160**



REF. NO.	PART NO.	QTY.	DESCRIPTION
1	50035260	1	Complete Collar Yoke
2	64694	2	Cross Journal Set
3	63956	8	Grease Nipple
4	78571	1	Outer Tube Yoke
5	78577	1	Flexible Pin
6	82800	1	Outer Tube
7	82801	1	Inner Tube
8	78578	1	Flexible Pin
9	78570	1	Inner Tube Yoke
10	81447	1	Outer Yoke
11	90008	1	Outer Bearing
12	50042832	1	Inner Bearing
13	64814	2	Chain
14	50035261	1	Ball Collar Kit
15	Not Available Order 50063617 Driveshaft Assy.		
16	Not Available Order 50063617 Driveshaft Assy.		
17	98145	1	Safety Guard
18	78786	1	Danger Decal
19	78608	1	Danger Decal
20	63946	1	Grease Nipple

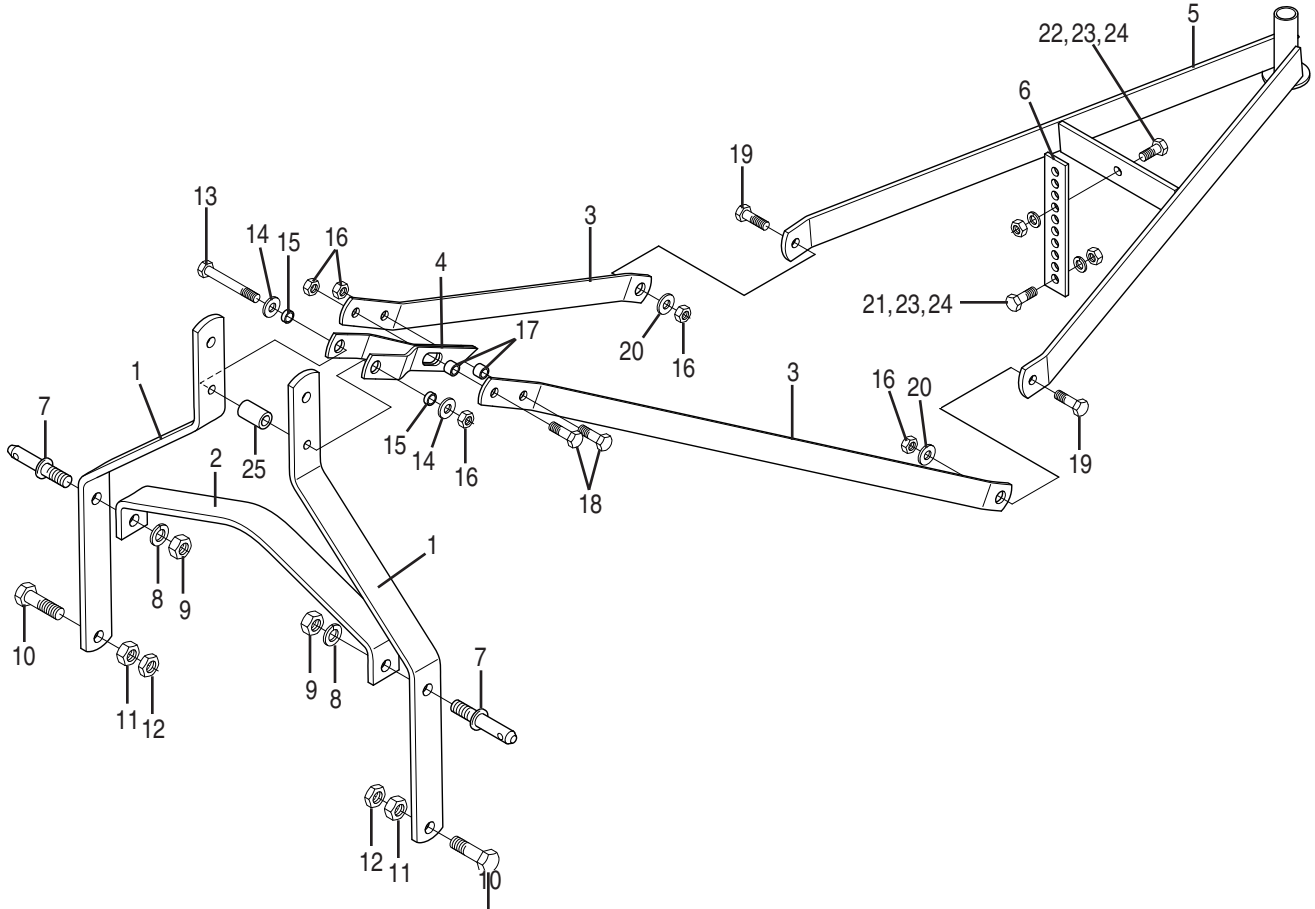
**50063617 DRIVE SHAFT ASSEMBLY**  
 (Replaces the 50034247 Driveshaft Assy.)  
**ASAE Size 3**  
**540 RPM, 1-3/8" - Spine Tractor & Shear Bolt Implement Yoke**  
 Mfd. by Bondioli & Pavesi  
 RZ160



REF. NO.	PART NO.	QTY.	DESCRIPTION
1	50064902	1	Tractor Yoke Assy.
2	64964	2	Cross Bearing Kit
3	78571	1	Yoke Outer Tube
4	78577	1	Roll Pin for Outer Tube
5	50064906	1	Outer Tube
6	50064907	1	Inner Tube
7	78578	1	Roll Pin Inner Tube
8	78570	1	Yoke for Inner Tube
9	64693	1	Implement Yoke Assy.
10	50064911	1	Outer Shield Bearing

REF. NO.	PART NO.	QTY.	DESCRIPTION
11	71404	6	Self Tapping Screw
12	50064912	1	Inner Shield Bearing
13	50064890	2	Shield Chain
14	78786	1	Danger Decal, Outer Tube
15	78608	1	Danger Decal, Inner Tube
16	50064645	1	Ball Collar Kit
17	63946	1	Grease Fitting
18	50064914	1	Outer Half Assy.
19	5006494	1	Inner Half Assy.
20	50064942	1	Complete Shield Kit

## RZ160 "A" FRAME ASSEMBLY and TAILWHEEL FRAME ASSEMBLY

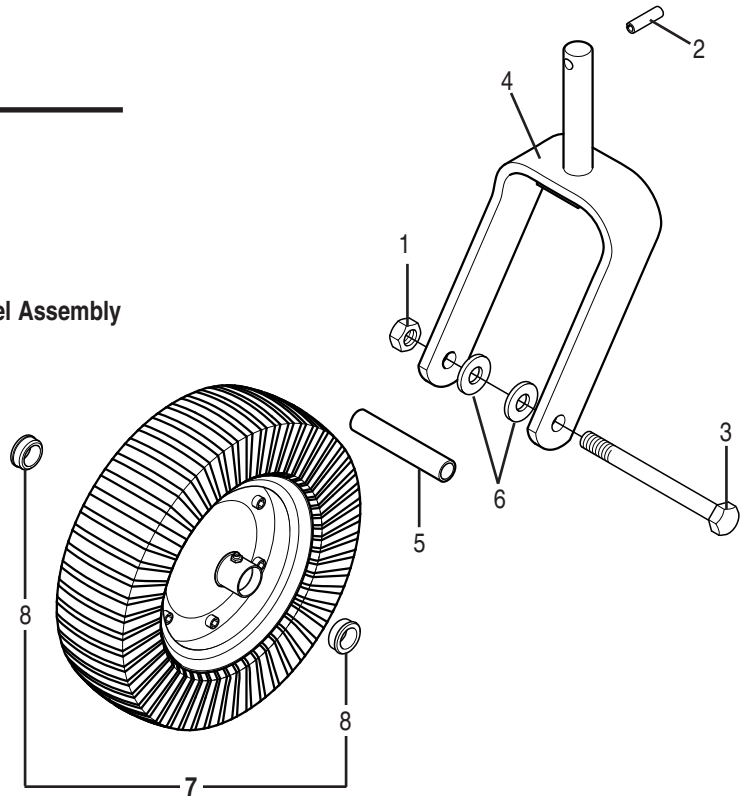


REF. NO.	PART NO.	QTY.	DESCRIPTION
1	50047929	2	Strut, "A" Frame
2	63810	1	Crossbrace
3	50060402	2	Yoke
4	50048804	1	Pivot Arm Weldment
5	50060416	1	Tailwheel Frame Weldment
6	81396	1	Link, Tailwheel
7	63765	2	Lift Pin Cat. 1
8	—	2	Lockwasher 7/8"
9	15626	2	Jamnut 7/8" NF
10	—	2	Capscrew 7/8" x 3" Gr. 5
11	—	2	Hex Nut 7/8"
12	10152800	2	Jamnut 7/8"
13	—	1	Capscrew 5/8" x 4-3/4" Gr. 5

REF. NO.	PART NO.	QTY.	DESCRIPTION
14	20748	2	Flatwasher 5/8" SAE
15	50048651	2	Spacer
16	15598	5	Locknut 5/8"
17	95534	2	Bushing, Flex Link
18	—	2	Capscrew 5/8" x 2" Gr. 5
19	20206	2	Capscrew 5/8" x 2" Gr. 8
20	—	2	Flatwasher 5/8"
21	—	1	Capscrew 5/8" x 1-3/4" Gr. 5
22	—	1	Capscrew 5/8" x 1-1/2" Gr. 5
23	—	2	Lockwasher 5/8"
24	—	2	Hex Nut 5/8"
25	50033665	1	Cat. 1 Quick Hitch Top Bushing

### 95542 SOLID TIRE OLD STYLE CASTER ASSEMBLY (REPLACED BY 50067489 CASTER ASSEMBLY)

REF. NO.	PART NO.	QTY.	DESCRIPTION
1	20638	1	Locknut 3/4" - 10 UNC
2	20981	1	Roll Pin 1/2" - 1-3/4"
3	20946	1	Capscrew 3/4" x 8" Gr.5
4	99929	1	Fork Weldment
5	12263	1	Spacer Tube
6	50028263	2	Washer
7	<b>50058327</b>	1	<b>Segmented Tire &amp; Wheel Assembly</b>
8	50058328	2	Bushing



### 50067489 SOLID TIRE CASTER ASSEMBLY

REF. NO.	PART NO.	QTY.	DESCRIPTION
1	50067492	1	Caster Fork Weldment
2	500	1	Wheel Assy. W/Solid Tire
3	50067490	1	Hub Casting
4	44269	4	Flatwasher M12 ZP
5	44204	4	Capscrew M12 X 1.75 X 25 G8.8 ZP
6	50067488	1	Axle Bolt
7	50067496	1	Slotted Hex Nut, M24 X 2
8	50067491	2	Bushing
9	50067495	1	Roll Pin 10 x 50, Metric
10	20167	1	Cotter Pin, 3/16 X 2 ZP
11	449	1	Grease Fitting

