

Tie Rod Cylinder Servicing

(Part # 99564)

Safety Precautions :



Be certain to clamp or securely support the cylinder and sub-assemblies to prevent injuries to hands and feet due to inadvertent dropping or falling over.



Always wear safety glasses and gloves to prevent eye and hand injury when chiseling or hammering on metal components. Hardened metal will chip unexpectedly.



A Cylinder can be quite heavy. Use a hoist or get help to handle them safely. Lift carefully and properly using legs to lift-not your back.

Be sure to remove as much oil as possible from the cylinder

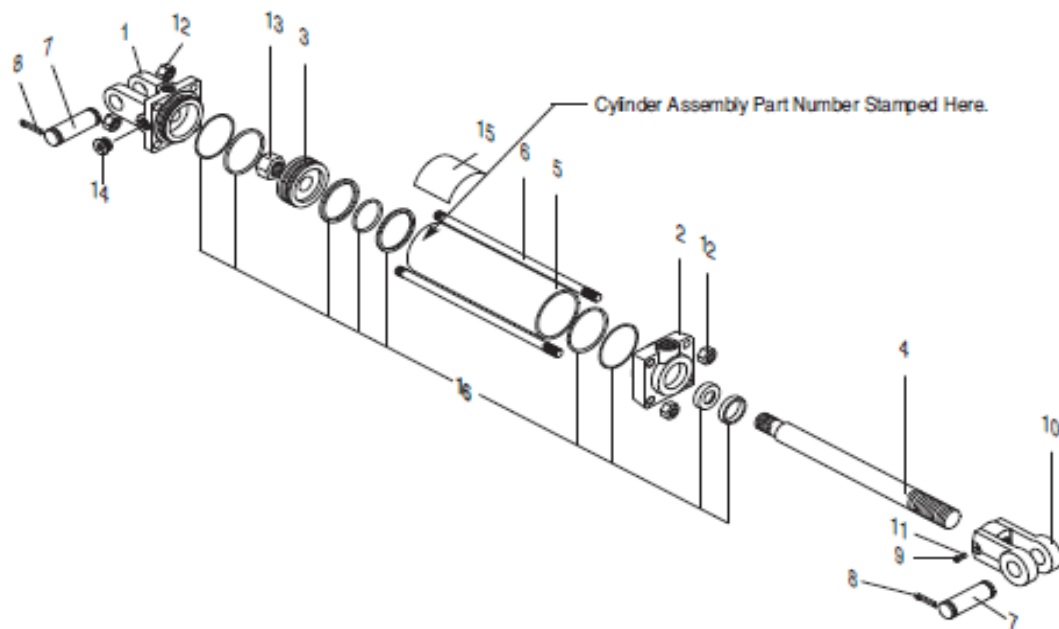
Tools needed:

Seal removal tool or flat head screwdriver
Ratchet or Air Ratchet with extension
3/4 socket and a 1 1/2 socket
Seal Installation Tool
Hammer

Assembly Notes:

Replace any damaged components.

When assembling the seals, avoid contact with cutting parts in order to prevent any damage to the seal.



99564 WING HYDRAULIC CYLINDER
3" Bore x 12" Stroke 1.25" Rod Diameter
3/4" – 16 ORB Ports
Manufactured by Monarch

REF. NO.	PART NO.	DESCRIPTION	QTY.
1	95440	Clevis Cap	1
2	95439	Rod Cap	1
3	95441	Piston	1
4	95436	Rod 1.25" Dia.	1
5	95437	Cylinder Tube	1
6	95438	Tie Rod	4
7	95425	Pin, 1" Dia.	2
8	21020614	Cotter Pin, 3/16" x 1-1/2"	4
9	95433	Thread Lock	1
10	95428	Rod Clevis, 1.25" x 1"	1
11	95422	Set Screw, 3/8" x 1/2" Knurled	1
12	8151600	Hex Nut, 1/2"-14 UNC	8
13	95421	Hex Nut, 1"-14	1
14	95435	Plug, 3/4"	1
15	95423	Decal, Caution	1
16	50017622	Seal Kit	1

- 1 Remove the (4) four tie-rods (#6) that hold the cylinder together by removing the (4) four hex nuts (#12) on the Clevis Cap (#1) end of the cylinder using a 3/4" socket or wrench.



- 2 Remove the Clevis Cap (#1) by tapping loose with a hammer.



- 3 Remove the cylinder tube (#5) from the other parts by pulling tube away from Rod Clevis (#10) End



- 4 View with Cylinder Tube (#5) removed



- 5 Remove Hex Nut (#13) on end of Rod (#4) with 1 1/2" socket then remove the Rod Cap (#2) and Piston (#3) from the rod by sliding the parts away from the rod clevis (#10)



- 6 Remove Rod Clevis (#10) From Rod (#4) by loosening Set Screw (#11) in Rod Clevis with a 3/16" Allen Wrench then unscrew the Rod Clevis From The Rod.



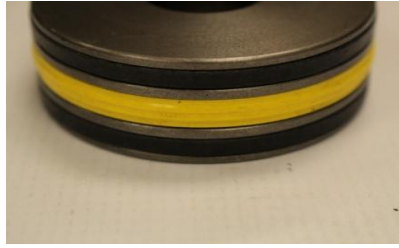
- 7 Remove and replace all seals with the seals provided in the replacement kit (#16)

- 8 Now the Cylinder is Fully Disassembled steps (9) nine thru (11) eleven shows the different parts the have seals attached to them and how it looks with seals installed and removed.

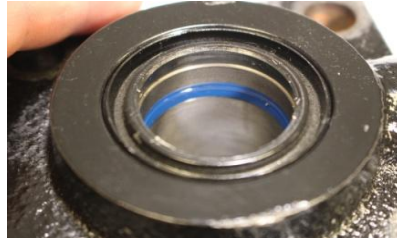
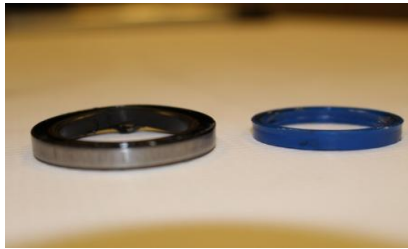
- 9 Clevis Cap (#1) And Seal (included in Seal Kit #16)



10 Piston (#3) And Seals (included in Seal Kit #16)



11 Rod Cap(#2) and Seals (included in Seal Kit #16)



12 Repeat steps (1) one thru (6) six in reverse order to reassemble Cylinder