



# PULL DISC HARROW

## **BUSH HOG**<sup>®</sup> DHP8, DHP10, DHP12

**MODELS**

Revised 06/21

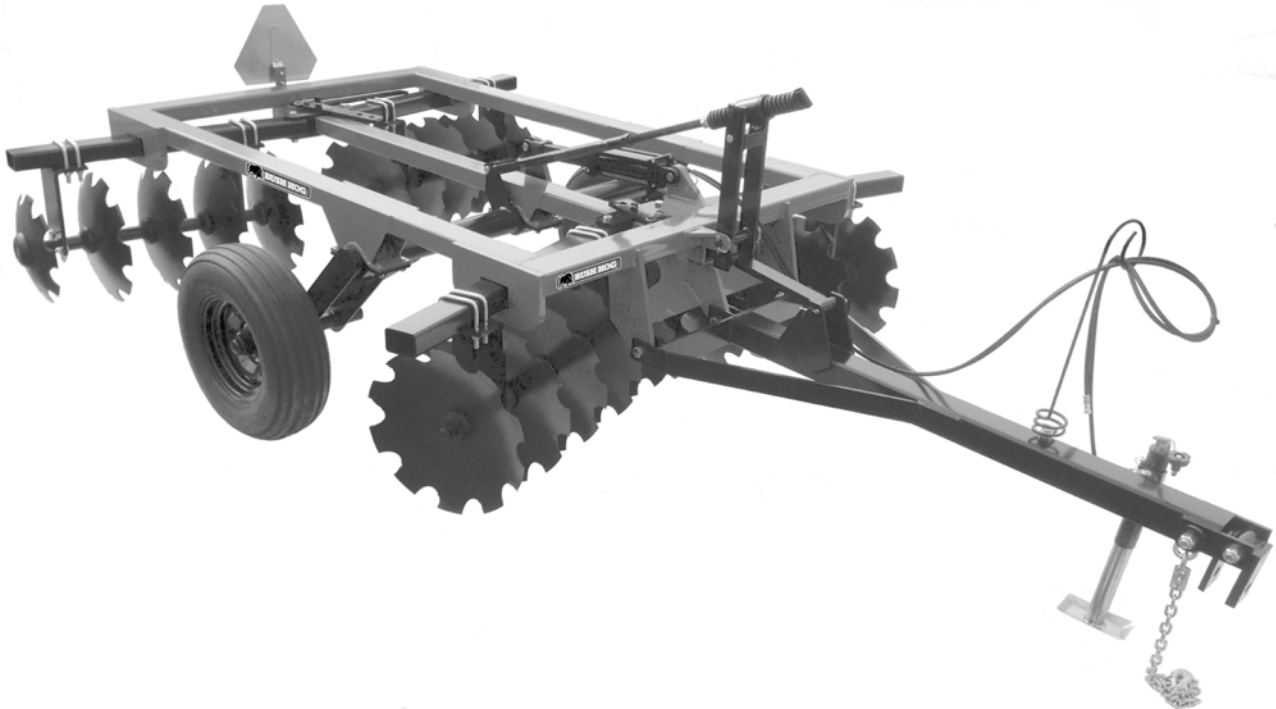
MATERIAL HANDLING PARTS MANUAL

# PARTS MANUAL

## SECTION 29



An Operator's Manual was shipped with the equipment . The Operator's Manual is an integral part of the safe operation of this machine and must be maintained with the unit at all times. **READ, UNDERSTAND, and FOLLOW** the Safety and Operation Instructions contained in this manual before operating the equipment. If the Operator's Manual is not with the equipment, contact your dealer or Bush Hog to obtain a Free copy before operating the equipment.



**BUSH HOG**<sup>®</sup>

2501 Griffin Ave.

Selma, AL 36703

334-874-2700

[www.bushhog.com](http://www.bushhog.com)

**¡ATENCIÓN!**  
LEA EL INSTRUCTIVO



Si No Lee Ingles, Pida  
Ayuda a Alguien  
Que Se Lo Lea Para Que le  
Traduzca Las  
Medidas de Seguridad

©2015 Alamo Group Inc.

**A** **MEMBER OF THE**  
**ALAMO GROUP**  
ALWAYS ON THE CUTTING EDGE<sup>®</sup>

## PARTS ORDERING GUIDE

The following instructions are offered to help eliminate needless delay and error in processing purchase orders for the equipment in this section.

1. The Parts Section is prepared in logical sequence and grouping of parts that belong to the basic machine featured in this manual. Part Numbers and Descriptions are given to help locate the parts and quantities required.
2. The Purchase Order must include the name and address of the person or organization ordering the parts, who should be charged, and if possible, the serial number of the machine for which the parts are ordered.
3. The Purchase Order must clearly list the quantity of each part, the complete and correct part number (be sure to include all periods), and the basic name of the part.
4. The Manufacturer reserves the right to substitute parts where applicable.
5. Some parts are unlisted items which are special production items not normally stocked and are subject to special handling. Request a quotation for such parts before sending a Purchase Order.
6. The Manufacturer reserves the right to change prices without prior notice.



For maximum safety and to guarantee optimum product reliability, always use genuine BUSH HOG Parts. The use of inferior replacement parts may cause premature or catastrophic failure which could result in serious injury or death. Direct any questions regarding parts to:

**BUSH HOG**  
**2501 Griffin Ave.**  
**Selma, AL 36703**  
**[www.bushhog.com](http://www.bushhog.com)**  
**Contact Us**  
**800-304-2836**



**BUSH HOG®**

# LIMITED WARRANTY

Bush Hog warrants to the original purchaser of any new Bush Hog equipment, purchased from an authorized Bush Hog dealer, that the equipment be free from defects in material and workmanship for a period of one (1) year for non-commercial, state and municipalities' use and ninety (90) days for commercial use from date of retail sale. The obligation of Bush Hog to the purchaser under this warranty is limited to the repair or replacement of defective parts.

Replacement or repair parts installed in the equipment covered by this limited warranty are warranted for ninety (90) days from the date of purchase of such part or to the expiration of the applicable new equipment warranty period, whichever occurs later. Warranted parts shall be provided at no cost to the user at an authorized Bush Hog dealer during regular working hours. Bush Hog reserves the right to inspect any equipment or parts which are claimed to have been defective in material or workmanship.

## DISCLAIMER OF IMPLIED WARRANTIES & CONSEQUENTIAL DAMAGES

Bush Hog's obligation under this limited warranty, to the extent allowed by law, is in lieu of all warranties, implied or expressed, **INCLUDING IMPLIED WARRANTIES OF MERCHANTABILITY AND FITNESS FOR A PARTICULAR PURPOSE** and any liability for incidental and consequential damages with respect to the sale or use of the items warranted. Such incidental and consequential damages shall include but not be limited to: transportation charges other than normal freight charges; cost of installation other than cost approved by Bush Hog; duty; taxes; charges for normal service or adjustment; loss of crops or any other loss of income; rental of substitute equipment, expenses due to loss, damage, detention or delay in the delivery of equipment or parts resulting from acts beyond the control of Bush Hog.

## THIS LIMITED WARRANTY SHALL NOT APPLY:

1. To vendor items which carry their own warranties, such as engines, tires, and tubes.
2. If the unit has been subjected to misapplication, abuse, misuse, negligence, fire or other accident.
3. If parts not made or supplied by Bush Hog have been used in connection with the unit, if, in the sole judgement of Bush Hog such use affects its performance, stability or reliability.
4. If the unit has been altered or repaired outside of an authorized Bush Hog dealership in a manner which, in the sole judgement of Bush Hog, affects its performance, stability or reliability.
5. To normal maintenance service and normal replacement items such as gearbox lubricant, hydraulic fluid, worn blades, or to normal deterioration of such things as belts and exterior finish due to use or exposure.
6. To expendable or wear items such as teeth, chains, sprockets, belts, springs and any other items that in the company's sole judgement is a wear item.

NO EMPLOYEE OR REPRESENTATIVE OF BUSH HOG IS AUTHORIZED TO CHANGE THIS LIMITED WARRANTY IN ANY WAY OR GRANT ANY OTHER WARRANTY UNLESS SUCH CHANGE IS MADE IN WRITING AND SIGNED BY BUSH HOG'S SERVICE MANAGER, 2501 GRIFFIN AVE., SELMA, ALABAMA 36703.

Record the model number, serial number and date purchased. This information will be helpful to your dealer if parts or service are required.

MODEL NUMBER \_\_\_\_\_

SERIAL NUMBER \_\_\_\_\_

DATE OF RETAIL SALE \_\_\_\_\_

MAKE CERTAIN THE WARRANTY  
HAS BEEN FILED WITH BUSH HOG  
SELMA, ALABAMA

# TABLE OF CONTENTS

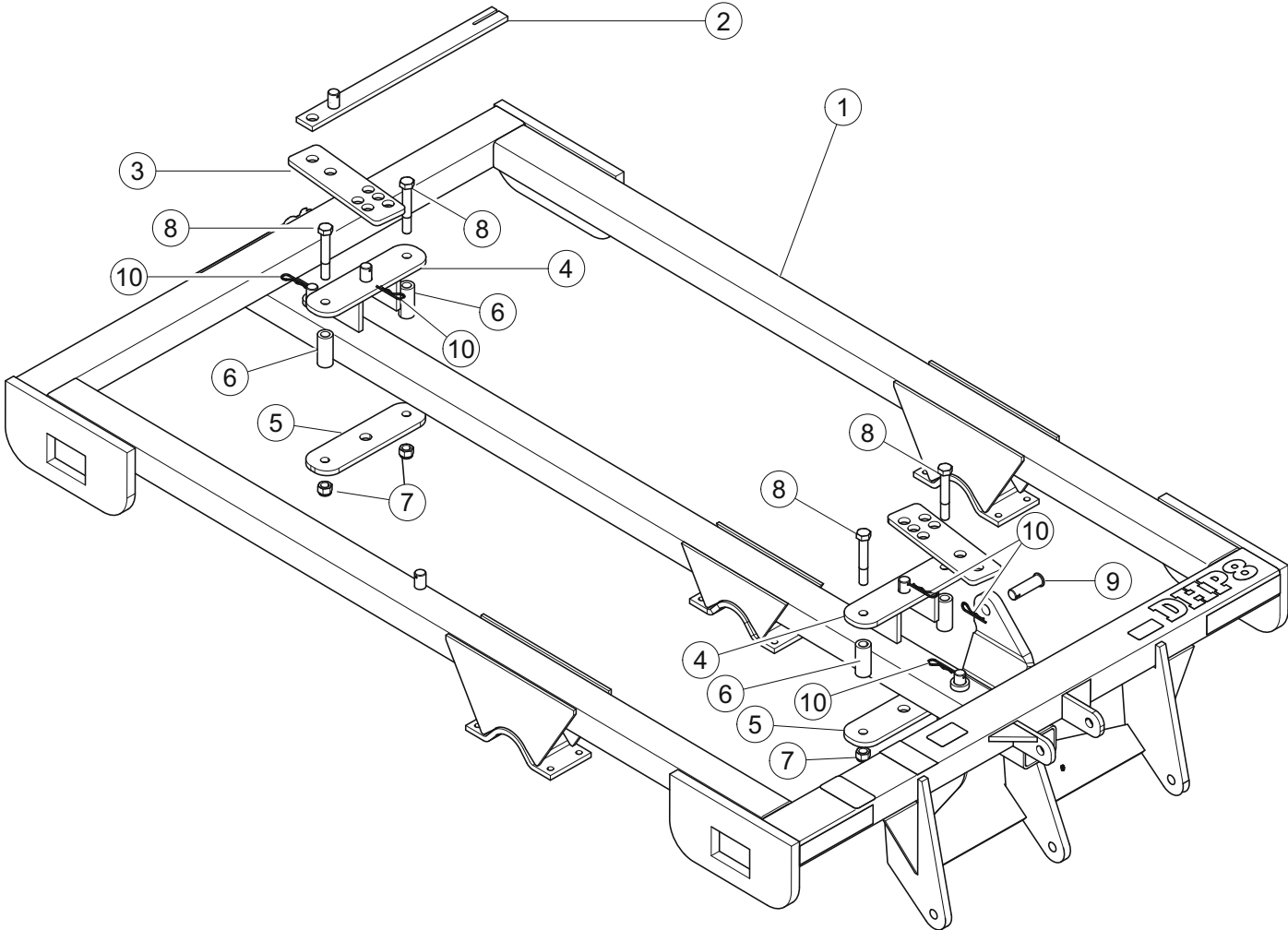
## PULL DISC HARROWS

### DHP8, DHP10, DHP12

---

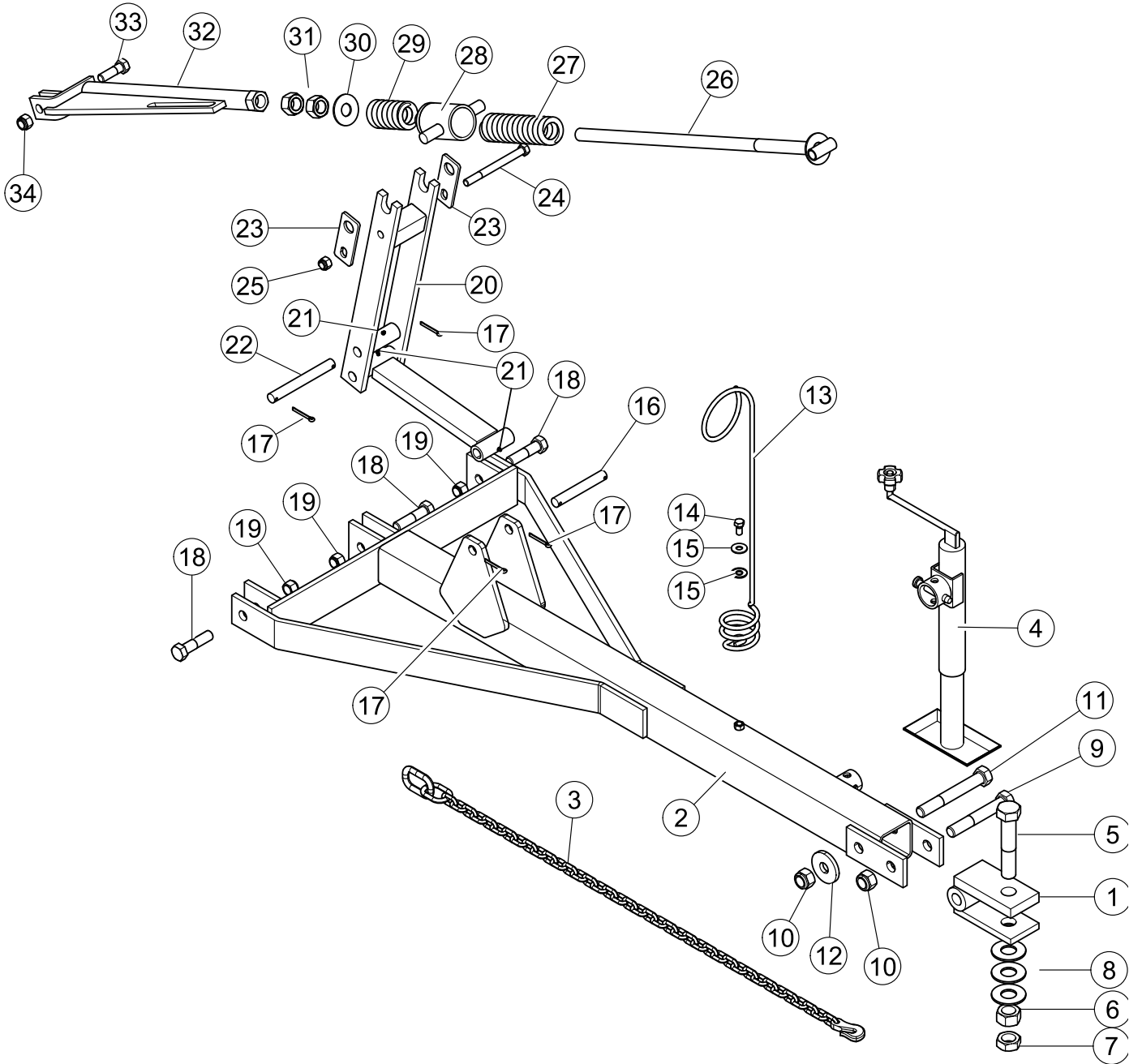
| <b>COMPONENT</b>                           | <b>LOCATION</b> |
|--|-----------------|
| Frame & Related Parts .....                | 29-1-1          |
| Tongue & Related Parts .....               | 29-1-2          |
| Axle & Related Parts.....                  | 29-1-4          |
| Disc Gangs & Related Parts .....           | 29-1-5          |
| Scrapers & Related Parts .....             | 29-1-6          |
| Hydraulic Components & Related Parts ..... | 29-1-7          |
| Decals - Safety & Marking .....            | 29-1-8          |
| SMV Placard .....                          | 29-1-9          |

# PULL DISC HARROW DHP8, DHP10, DHP12 FRAMES AND RELATED PARTS



| Ref. No. | Part No. | Description                          | Qty. Req'd. |
|----------|----------|--------------------------------------|-------------|
| 1        | 50072260 | Frame Weldment DHP8                  | 1           |
|          | 50072292 | Frame Weldment DHP10 & DHP12         | 1           |
| 2        | 50072271 | Handle, Adjusting                    | 1           |
| 3        | 50072270 | Adjusting Plate, Angle, DHP8         | 2           |
|          | 50077776 | Adjusting Plate, Angle, DHP10, DHP12 | 2           |
| 4        | 50072263 | Adjusting Weldment, Angle            | 2           |
| 5        | 50072264 | Adjusting Plate, Bottom              | 2           |
| 6        | 50072276 | Bushing                              | 4           |
| 7        | 45321BH  | Locknut 1-3/4" Nylock                | 4           |
| 8        | 44064BH  | Capscrew 3/4" x 5' Gr.5              | 4           |
|          | 99334    | Cylinder Pin 1" x 3-1/2"             | 1           |
| 10       | 50005860 | Pin .148" x 3/4"                     | 5           |

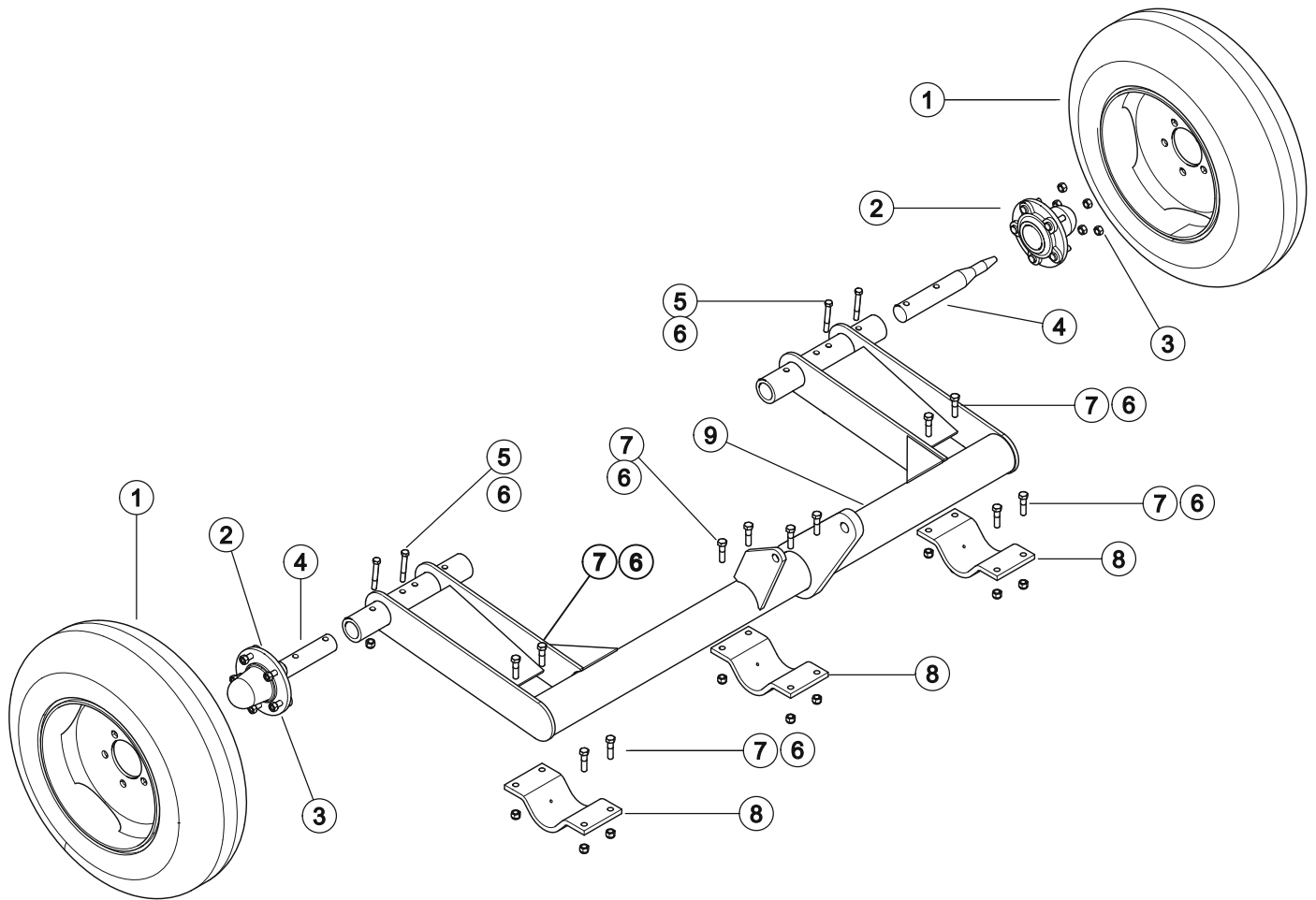
# PULL DISC HARROW DHP8, DHP10, DHP12 TONGUE AND RELATED PARTS



**PULL DISC HARROW  
DHP8, DHP10, DHP12  
TONGUE AND RELATED PARTS**

| Ref.<br>No. | Part<br>No. | Description                   | Qty.<br>Req'd. |
|-------------|-------------|-------------------------------|----------------|
| 1           | 50072282    | Pull Hitch                    | 1              |
| 2           | 50072283    | Tongue Weldment               | 1              |
| 3           | 91091       | Safety Chain                  | 1              |
| 4           | 50072285    | Jack Assembly                 | 1              |
| 5           | 50072277    | Capscrew 1-1/4" x 6-1/2" Gr.5 | 1              |
| 6           | 20305       | Hex Nut 1-1/4"                | 1              |
| 7           | 50072279    | Jam Nut 1-1/4"                | 1              |
| 8           | 20570       | Flatwasher 1-1/4"             | 4              |
| 9           | 50072280    | Capscrew " x 6-1/2" Gr.5      | 1              |
| 10          | 50072278    | Hex Locknut 1" Nylock         | 2              |
| 11          | 20860       | Capscrew 1" x 7-1/2" Gr.5     | 1              |
| 12          | 50072281    | Safety Chain Washer           | 1              |
| 13          | 50072284    | Hose Holder                   | 1              |
| 14          | 20054       | Capscrew 1/2" x 1" Gr.5       | 1              |
| 15          | 15829       | Flatwasher 1/2" SAE           | 2              |
| 16          | 50072274    | Pin 7/8" x 6"                 | 1              |
| 17          | 21020820    | Cotter Pin 1/8" x 2"          | 4              |
| 18          | 50072257    | Capscrew 7/8" x 4" Gr.5       | 3              |
| 19          | 50022258    | Hex Locknut 7/8" Nylock       | 3              |
| 20          | 50072262    | Pivot Assembly                | 1              |
| 21          | 50072255    | Grease Fitting                | 3              |
| 22          | 50072273    | Pin 7/8" x 7-1/2"             | 1              |
| 23          | 50072269    | Retainer Plate, Spring Cap    | 2              |
| 24          | 20118       | Capscrew 5/8" x 7" Gr.5       | 1              |
| 25          | 45020BH     | Hex Locknut 5/8" Nylock       | 1              |
| 26          | 50072286    | Threaded Rod Weldment         | 1              |
| 27          | 50072266    | Spring, Upper                 | 1              |
| 28          | 50072294    | Spring Cup Weldment           | 1              |
| 29          | 50072268    | Spring, Lower                 | 1              |
| 30          | 15913       | Flatwasher 1-1/8"             | 1              |
| 31          | 20304       | Hex Nut, Heavy Duty 1-1/8"    | 2              |
| 32          | 50072287    | Tube Weldment                 | 1              |
| 33          | 1162424     | Capscrew 3/4" x 2-1/2" Gr.5   | 1              |
| 34          | 45321BH     | Locknut 3/4" Nylock           | 1              |

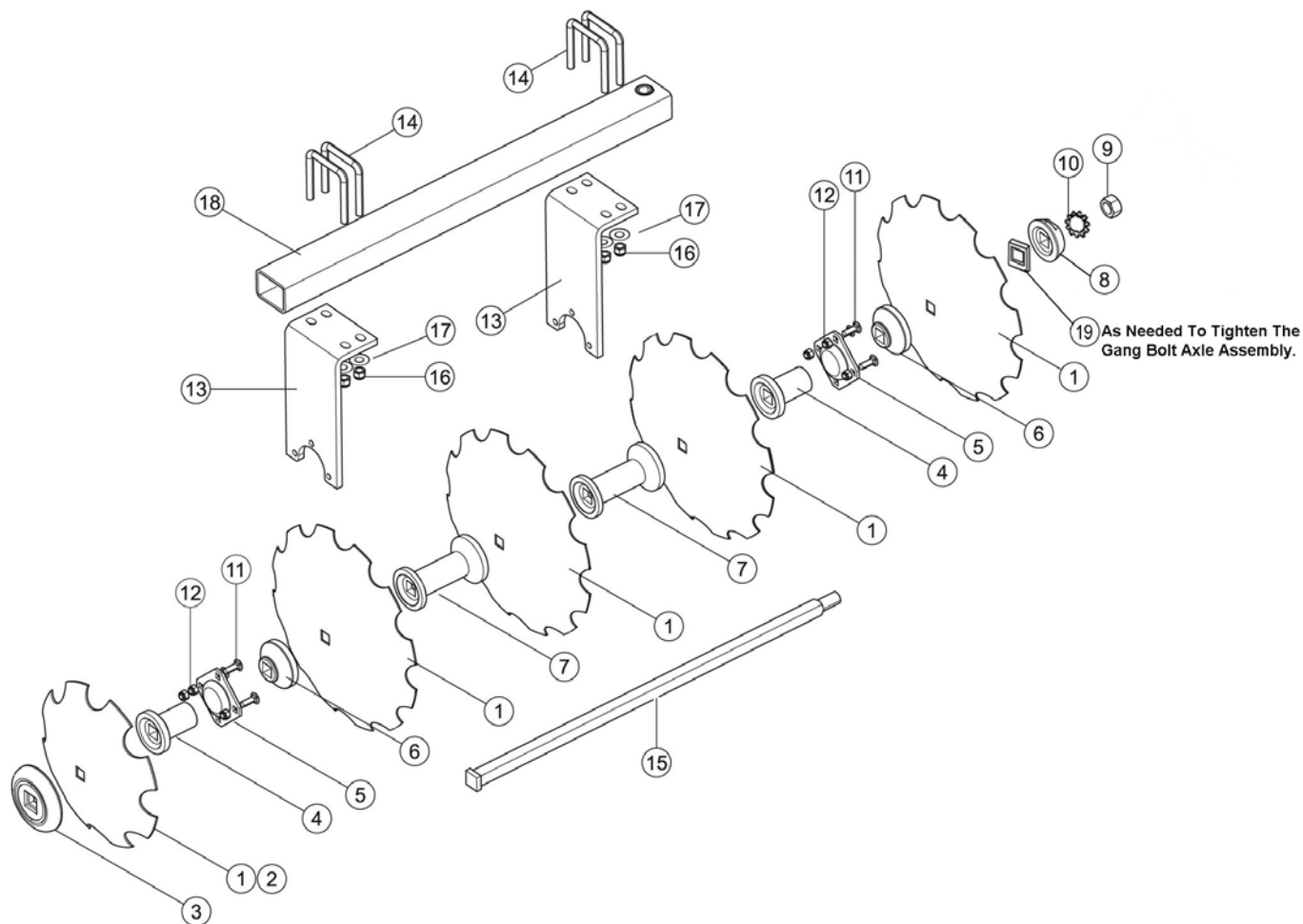
# PULL DISC HARROW DHP8, DHP10, DHP12 AXLE AND RELATED PARTS



| Ref. No. | Part No. | Description                       | Qty. Req'd. |
|----------|----------|-----------------------------------|-------------|
| 1        | 50072290 | Wheel and Tire Assy.              | 2           |
| 2        | 50072288 | Hub Assy. Complete                | 2           |
| 3        | 50072291 | Lug Nut 1/2"                      | 10          |
| 4        | 50072289 | Axle Spindle                      | 2           |
| 5        | 50072256 | Capscrew 1/2" 1/2" x 3-1/4" Gr.5  | 4           |
| 6        | 44539BH  | Locknut 1/2" Nylock               | 4           |
| 7        | 20110BH  | Capscrew 1/2" x 2" Gr.5           | 12          |
| 8        | 50072265 | Axle Clamp                        | 3           |
| 9        | 50072261 | Axle Weldment for DHP8            | 1           |
|          | 50072293 | Axle Weldment for DHP10 and DHP12 | 1           |



## PULL DISC HARROW DHP8, DHP10, DHP12 DISC ASSEMBLES and RELATED PARTS

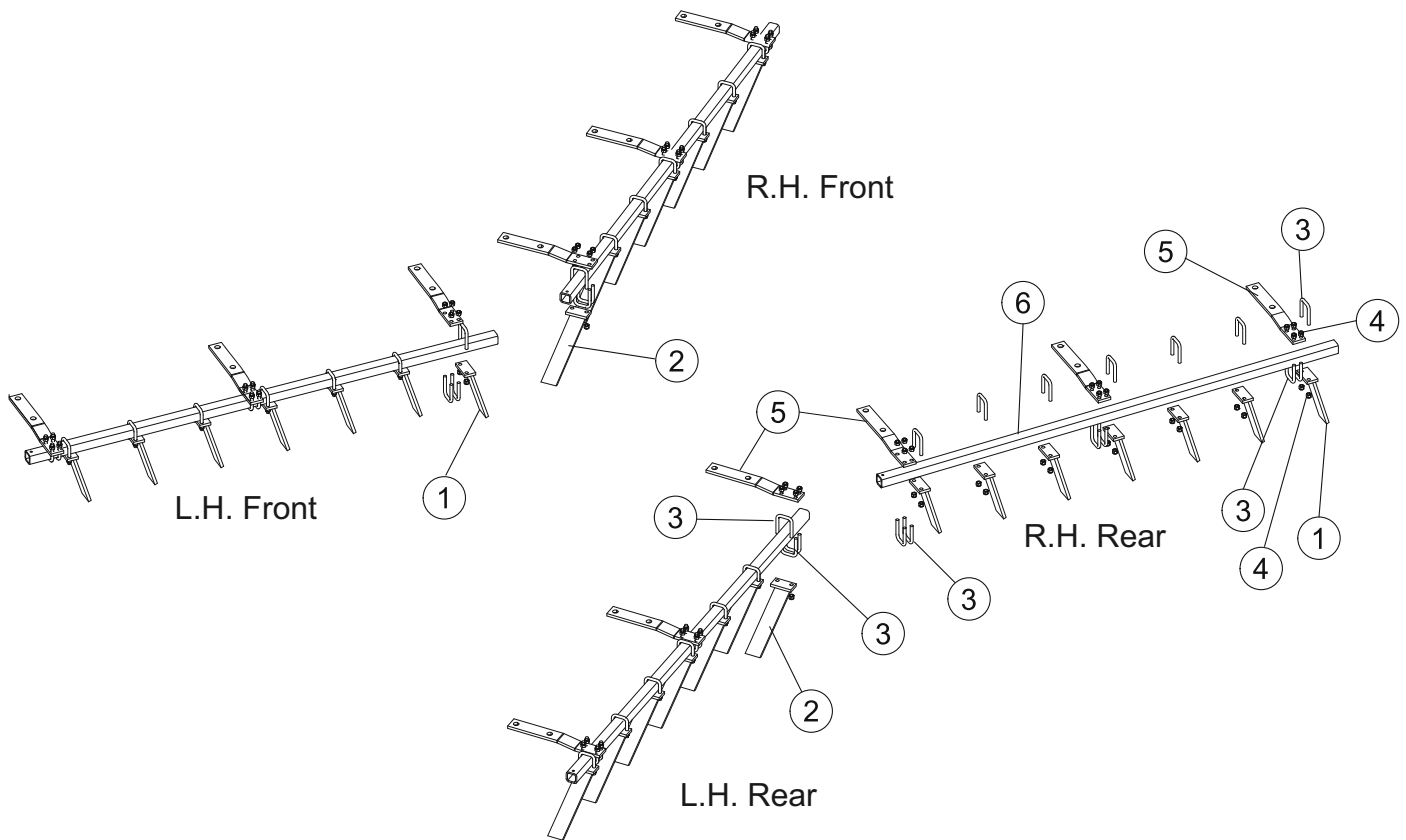


| Ref. No. | Part No. | Description                          | Qty. Req'd. | Ref. No. | Part No. | Description                | Qty. Req'd. |
|----------|----------|--------------------------------------|-------------|----------|----------|----------------------------|-------------|
| 1        | 50073400 | Disc Blade 20" Scalloped             | a/r         | 13       | 50072299 | Gang Hanger                | a/r         |
|          | 50073401 | Disc Blade 22" Scalloped             | a/r         | 14       | 50072298 | U-Bolt 5/8" x 5-1/2"       | 1           |
| 2        | 50072296 | Disc Blade 18" Scalloped             | a/r         | 15       | 50069601 | Axle Bolt w/Nut 42"        | 1           |
|          | 50073399 | Disc Blade 16" Scalloped             | a/r         |          | 50069603 | Axle Bolt w/Nut 40-1/4"    | 1           |
| 3        | 50069595 | End Washer                           | 1           |          | 50072295 | Axle Bolt w/Nut 57-1/2"    | 1           |
| 4        | 50069593 | Spacer 4-1/2" (7-1/2 & 9" Sp.)       | a/r         |          | 50073889 | Axle Bolt w/Nut 58-1/2"    | 1           |
| 5        | 50069597 | Bearing, Sealed 1-1/8"               | a/r         |          | 50072303 | Axle Bolt w/Nut 65"        | 1           |
| 6        | 50069594 | Spacer 3-1/4" (9" Spacing)           | a/r         |          | 50073890 | Axle Bolt w/Nut 67-1/2"    | 1           |
|          | 50069602 | Spacer 1-3/4" (7-1/2" Spacing)       | a/r         | 16       | 45020BH  | Hex Locknut 5/8"           | 1           |
| 7        | 50069592 | Spacer (7-1/2" Spacing)              | a/r         | 17       | 20748    | Flatwasher 5/8" Sae        | 1           |
|          | 50069599 | Spacer (9" Spacing)                  | a/r         | 18       | 50072301 | Gang Tube 45"              | 1           |
| 8        | 50069598 | End Washer                           | 1           |          | 50072297 | Gang Tube 60"              | 1           |
| 9        | 50082251 | 1-1/8" Top-Locknut                   | 1           |          | 50072302 | Gang Tube 68"              | 1           |
|          | 50082250 | 1" Top-Locknut                       | 1           | 19       | 50080288 | Axle Washer, 2 x 2 x .125  | a/r         |
| 10       | 50082253 | .0625 Washer (1-1/8" Threaded. Axle) | 1           |          | 50080289 | Axle Washer, 2 x 2 x .179  | a/r         |
|          | 50082252 | .0625 Washer (1" Threaded. Axle)     | 1           |          | 50080290 | Axle Washer, 2 x 2 x .25   | a/r         |
| 11       | 44134BH  | Carriage Bolt 1/2" x 1-3/4" Gr5      | 1           |          | 50080291 | Axle Washer, 2 x 2 x .3125 | a/r         |
| 12       | 44539BH  | Locknut 1/2" Nylock                  | 1           |          | 50080292 | Axle Washer, 2 x 2 x .375  | a/r         |
|          |          |                                      |             |          | 50080293 | Axle Washer, 2 x 2 x .50   | a/r         |

a/r = as required

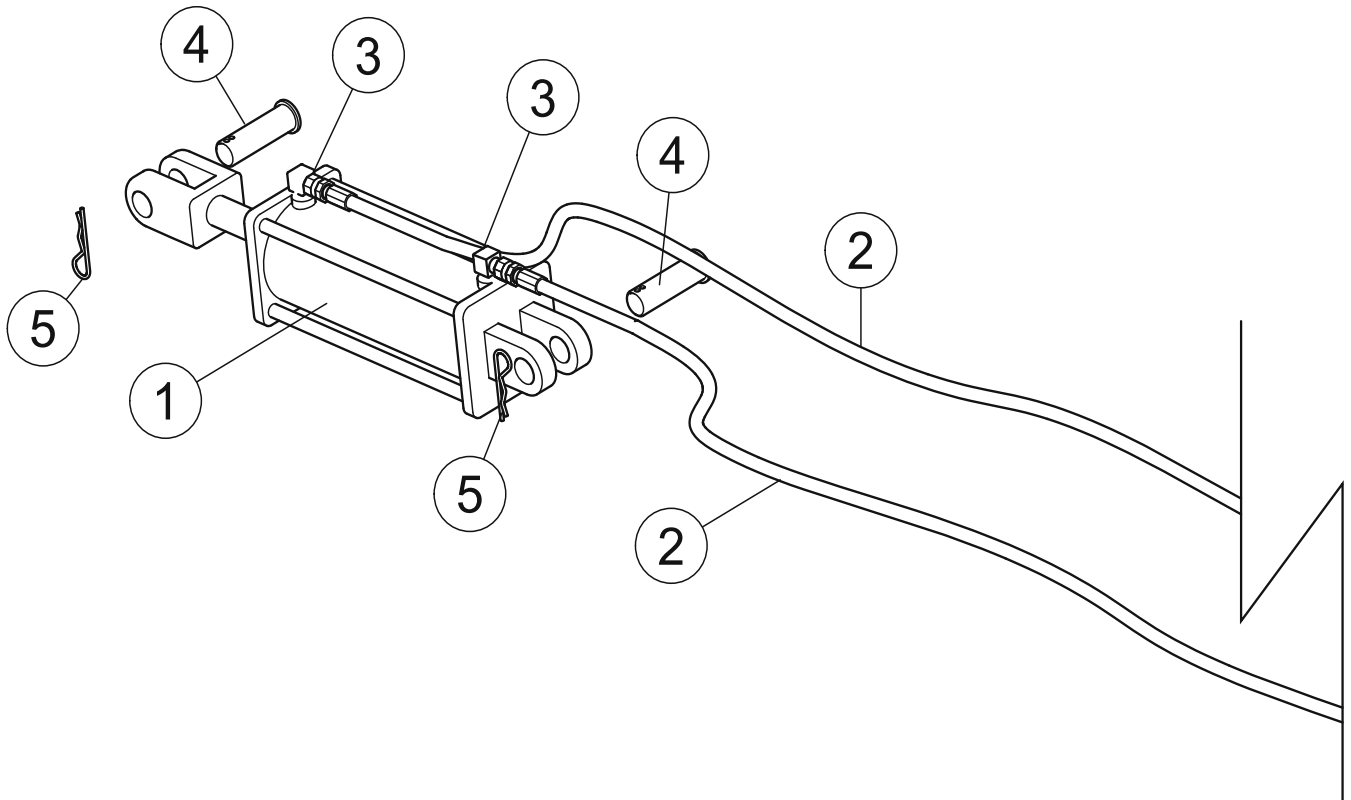
a/r = as required

# PULL DISC HARROW DHP8, DHP10, DHP12 SCRAPERS and RELATED PARTS



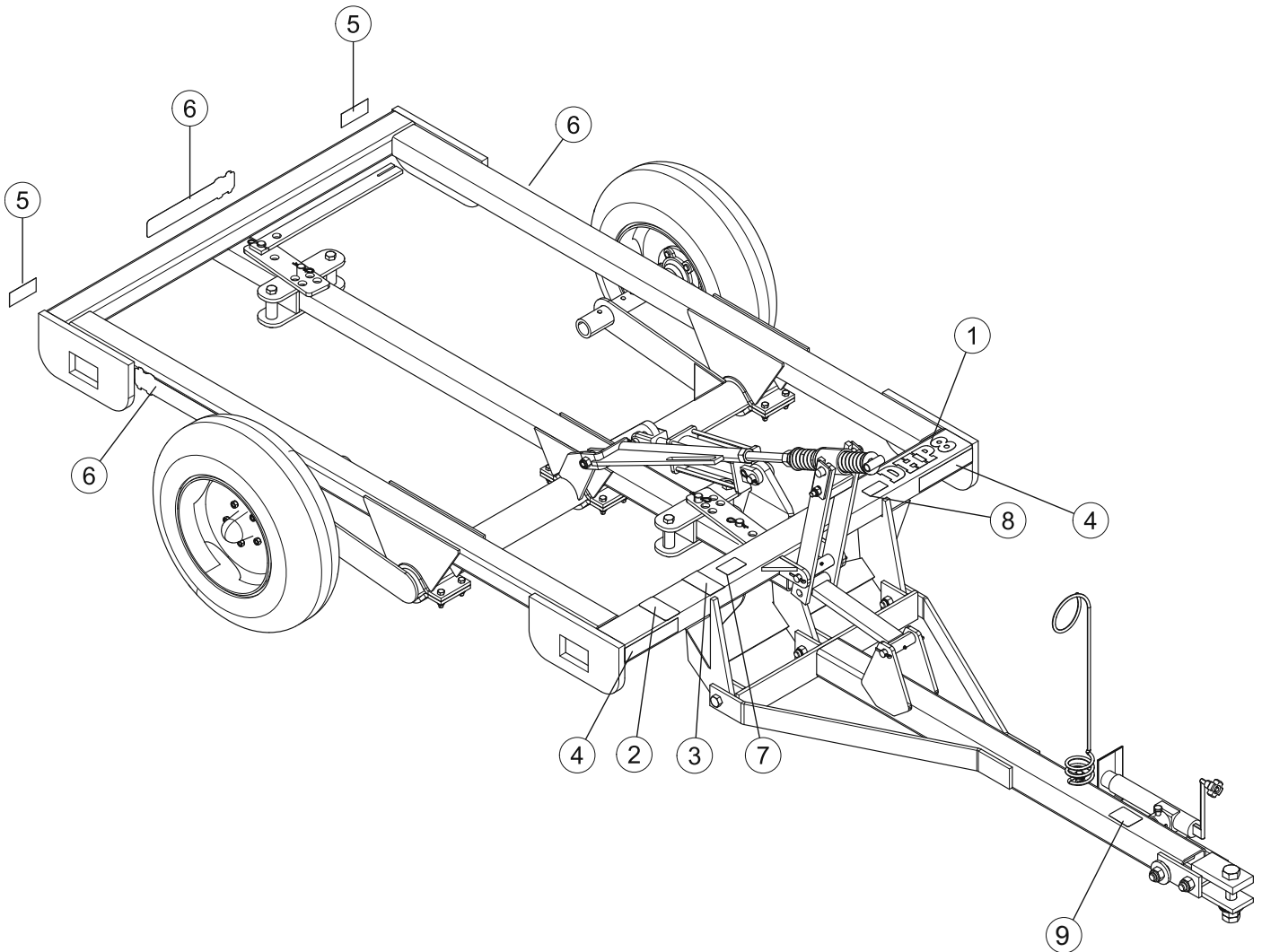
| Ref. No. | Part No. | Description                                   | Qty. Req'd. |
|----------|----------|---|-------------|
| 1        | 50071191 | Scraper L.H. Front & R.H. Rear                | a/r         |
| 2        | 50071192 | Scraper R.H. Front & L.H. Rear                | a/r         |
| 3        | 50071188 | "U" Bolt 3/8" x 1-5/8"                        | a/r         |
| 4        | 44624BH  | Hex Locknut 3/8" Nylock                       | a/r         |
| 5        | 50072319 | Scraper Attach Plate                          | a/r         |
| 6        | 50072321 | Scraper Mount Tube 1-1/2" Sq. x 41-1/2" DHP8  | 4           |
|          | 50072320 | Scraper Mount Tube 1-1/2" Sq. x 56-1/2" DHP10 | 4           |
|          | 50072322 | Scraper Mount Tube 1-1/2" Sq. x 64-1/2" DHP12 | 4           |

**PULL DISC HARROW  
DHP8, DHP10, DHP12  
HYDRAULIC COMPONENTS and RELATED PARTS**



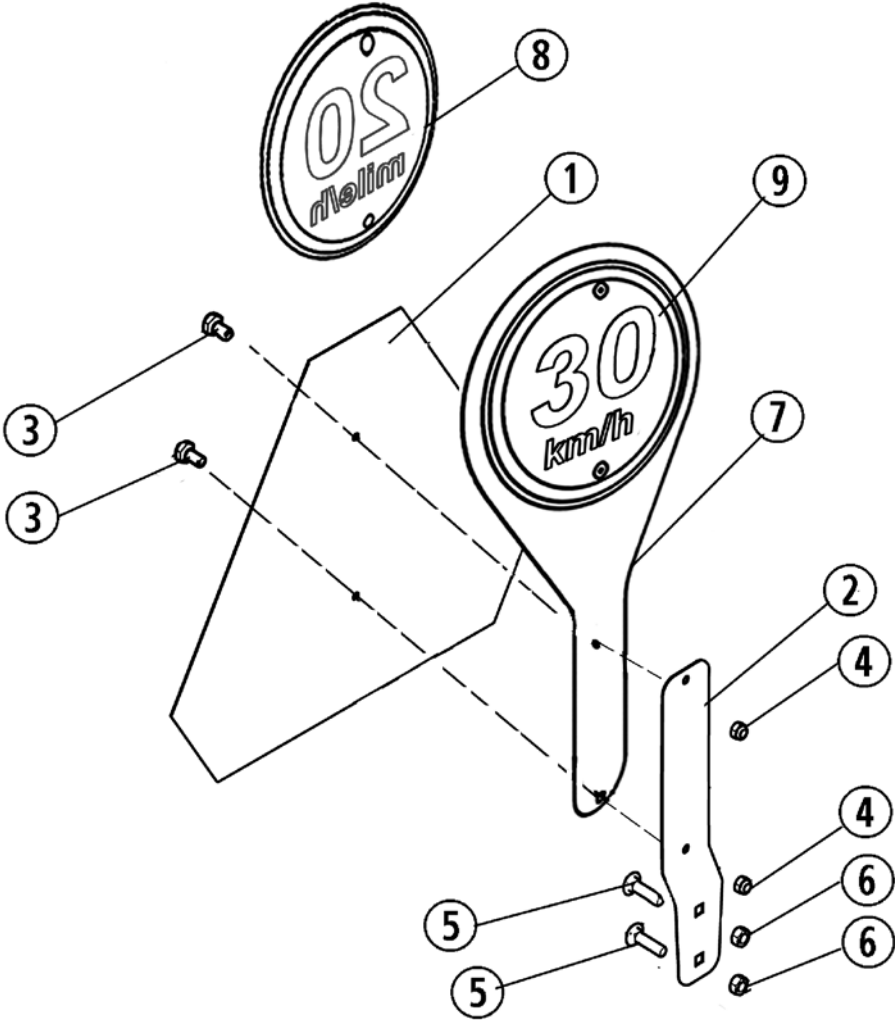
| Ref. No. | Part No. | Description                               | Qty. Req'd. |
|----------|----------|---|-------------|
| 1        | 50047475 | Hyd. Cyl.(Bailey) 3-1/2" Bore x 8" Stroke | 1           |
|          | 50017623 | Seal Repair Kit for cylinder              | 1           |
| 2        | 50072349 | Hyd. Hose 1/4" x 150"                     | 2           |
| 3        | 50072348 | Hyd. Fitting 90                           | 2           |
| 4        | 99334    | Cylinder Pin 1" x 3-1/2"                  | 2           |
| 5        | 50005860 | Hair Pin .148" x 3"                       | 2           |

# PULL DISC HARROW DHP8, DHP10, DHP12 DECALS - Safety and Marking



| Ref. No. | Part No. | Description                | Qty. Req'd. |
|----------|----------|----------------------------|-------------|
| 1        | 50072042 | Model Decal DHP8 (Shown)   | 1           |
|          | 50072040 | Model Decal DHP10          | 1           |
|          | 50072053 | Model Decal DHP12          | 1           |
| 2        | 50057047 | Caution Decal              | 1           |
| 3        | 90960BH  | Warning Decal              | 1           |
| 4        | 50031212 | Amber Reflector            | 2           |
| 5        | 50031214 | Red Reflector              | 2           |
| 6        | 50065309 | Bush Hog Decal             | 3           |
| 7        | 00725746 | Peligro Decal              | 1           |
| 8        | N/A      | Serial No. Decal           | 1           |
| 9        | D1085    | Notice Decal, Towing Speed | 1           |

**PULL DISC HARROW  
DHP8, DHP10, DHP12  
SMV PLACARD**



| Ref. No. | Part No. | Description                     | Qty. Req'd. |
|----------|----------|---------------------------------|-------------|
| 1        | 94359    | SMV Placard                     | 1           |
| 2        | 2438621  | Mount Bracket                   | 1           |
| 3        | 20009    | Capscrew 1/4" x 1/2"            | 2           |
| 4        | 45153    | Locknut 1/4"                    | 2           |
| 5        | 5161012  | Carriage Bolt 5/16" x 1-1/4"    | 2           |
| 6        | 45155BH  | Locknut 5/16"                   | 2           |
| 7        | 50082008 | SIS Plate w/Decals              | 1           |
| 8        | 50082007 | Decal, Speed ID Sign (20 mph/h) | 1           |
| 9        | 50082010 | Decal, Speed ID Sign (30km/h)   | 1           |







**BUSH HOG<sup>®</sup>**

2501 Griffin Ave. • Selma, AL 36703  
[www.bushhog.com](http://www.bushhog.com)