



FSP SERIES FERTILIZER SPREADER

BUSH HOG® Models FSP-500, FSP-800 Spreaders

*This manual applies to FSP-500 Model serial numbers 10831 and higher
FSP-800 Model serial numbers 10713 and higher*

Publication Date Revised 05/19

Manual Part No. 50073920

OPERATOR'S MANUAL



This Operator's Manual is an integral part of the safe operation of this machine and must be maintained with the unit at all times. READ, UNDERSTAND, and FOLLOW the Safety and Operation Instructions contained in this manual before operating the equipment. C01-Cover



BUSH HOG®

2501 Griffin Ave.
Selma, AL 36703
334-874-2700
www.bushhog.com

¡ATENCIÓN! LEA EL INSTRUCTIVO



Si No Lee Ingles, Pida
Ayuda a Alguien
Que Se Lo Lea Para Que le
Traduzca Las
Medidas de Seguridad

A MEMBER OF THE
ALAMO GROUP
ALWAYS ON THE CUTTING EDGE®

TABLE OF CONTENT

INTRODUCTION.....	2
SAFETY.....	2
SAFETY SIGNAL WORDS.....	3
GENERAL SAFETY GUIDELINES.....	3
SAFETY DECAL CARE	4
BEFORE OPERATION	4
DURING OPERATION.....	5
HIGHWAY AND TRANSPORT OPERATIONS	6
ASSEMBLY.....	7
OPERATION	9
ATTACHING TO THE TRACTOR	9
SHORTENING A PTO DRIVELINE.....	9
MAINTENANCE.....	10
SPREADING CHART.....	11
PARTS BREAKDOWN.....	12-13
SAFETY AND MARKING DECALS.....	14
DRIVESHAFT PARTS BREAKDOWN.....	15
LIMITED WARRANTY.....	16

INTRODUCTION

Thank you for purchasing your Bush Hog fertilizer spreader. Your fertilizer spreader is design to be used on Cat. 1 tractors and at 540 RPM PTO Speed. It is important to properly maintain in keep in place all safety guards and shields that came with your spreader.

SAFETY

Read and understand this manual and all safety signs before operating and maintaining. Review the safety instructions and precautions annually.

TAKE NOTE! THIS SAFETY ALERT SYMBOL FOUND THROUGHOUT THIS MANUAL IS USED TO CALL YOUR ATTENTION TO INSTRUCTIONS INVOLVING YOUR PERSONAL SAFETY AND THE SAFETY OF OTHERS. FAILURE TO FOLLOW THESE INSTRUCTIONS CAN RESULT IN INJURY OR DEATH.



**THIS SYMBOL MEANS
ATTENTION! BECOME ALERT! YOUR SAFETY IS INVOLVED!**

 **WARNING** Cancer and Reproductive Harm www.P65Warnings.ca.gov





SAFETY SIGNAL WORDS

Note the use of the signal words **DANGER**, **WARNING**, and **CAUTION** with the Safety Messages. The appropriate signal word for each has been selected using the following guidelines:



DANGER: Indicates an imminently hazardous situation that, if not avoided, will result in death or serious injury. This signal word is to be limited to the most extreme situations typically for machine components which, for functional purposes, cannot be guarded



WARNING: Indicates a potentially hazardous situation that, if not avoided, could result in death or serious injury, and includes hazards that are exposed when guards are removed. It may also be used to alert against unsafe practices.



CAUTION: Indicates a potentially hazardous situation that, if not avoided, may result in minor or moderate injury. It may also be used to alert against unsafe practices.



GENERAL SAFETY GUIDELINES

Safety of the operator is one of the main concerns in designing and developing a new piece of equipment. Designers and manufacturers build in as many safety features as possible. However, every year many accidents occur which could have been avoided by a few seconds of thought and a more careful approach to handling equipment. You, the operator, can avoid many accidents by observing the following precautions in this section. To avoid personal injury, study the following precautions and insist those working with you, or for you, follow them.

Replace any **CAUTION**, **WARNING**, **DANGER** or instruction safety decal that is not readable or is missing. Location of such decals is indicated in this booklet.

Do not attempt to operate this equipment under the influence of drugs or alcohol.

Review the safety instructions with all users annually.

This equipment is dangerous to children and persons unfamiliar with its operation. The operator should be a responsible adult familiar with farm machinery and trained in this equipment's operations.

Do not allow persons to operate or assemble this unit until they have read this manual and have developed a thorough understanding of the safety precautions and of how it works

To prevent injury or death, use a tractor equipped with a Roll Over Protective System (ROPS). Do not paint over, remove or deface any safety signs or warning decals on your equipment. Observe all safety signs and practice the instructions on them.

Never exceed the limits of a piece of machinery. If its ability to do a job, or to do so safely, is in question **DO NOT TRY IT.**



SAFETY DECAL CARE

- Keep safety signs clean and legible at all times.
- Replace safety signs that are missing or have become illegible.
- Replaced parts that displayed a safety sign should also display the current sign.
- Safety signs are available from your Distributor or Dealer Parts Department or the factory.

How to Install Safety Signs:

- Be sure that the installation area is clean and dry.
- Decide on the exact location before you remove the backing paper.
- Remove the small portion of the split backing paper.
- Align the decal over the specified area and carefully press the small portion with the exposed sticky backing in place.
- Slowly peel back the remaining paper and carefully smooth the remaining portion of the decal in place.
- Small air pockets can be pierced with a pin and smoothed out using the piece of decal backing paper.

BEFORE OPERATION

- Carefully study and understand this manual.
- Do not wear loose-fitting clothing, which may catch in moving parts.
- Always wear protective clothing and substantial shoes.
- Assure that all tires are inflated evenly.
- Give the unit a visual inspection for any loose bolts, worn parts or cracked welds, and make necessary repairs. Follow the maintenance safety instructions included in this manual.
- Be sure that there are no tools lying on or in the equipment.
- Do not use the unit until you are sure that the area is clear, especially children and animals.
- Don't hurry the learning process or take the unit for granted. Ease into it and become familiar with your new equipment.
- Practice operation of your equipment and its attachments. Completely familiarize yourself and other operators with its operation before using.
- Use a tractor equipped with a Roll Over Protective System (ROPS) and fasten your seat belt prior to starting the engine.
- The manufacturer does not recommend usage of tractor with ROPS removed.
- Move tractor wheels to the widest recommended settings to increase stability.
- Securely attach to towing unit. Use a high strength, appropriately sized hitch pin with a mechanical retainer and attach safety chain.
- Do not allow anyone to stand between the tongue or hitch and the towing vehicle when backing up to the equipment.



DURING OPERATION

- Children should not be allowed on the product.
- Clear the area of small children and bystanders before moving the feeder.
- If using a towing unit, securely attach feeder by using a hardened 3/4" pin, a metal retainer, and safety chains if required. Shift towing unit to a lower gear before going down steep downgrades, thus using the engine as a retarding force. Keep towing vehicle in gear at all times. Slow down for corners and rough terrain.
- Make sure you are in compliance with all local and state regulations regarding transporting equipment on public roads and highways. Lights and slow moving signs must be clean and visible by overtaking or oncoming traffic when feeder is transported.
- Beware of bystanders, **particularly children!** Always look around to make sure that it is safe to start the engine of the towing vehicle or move the unit. This is particularly important with higher noise levels and quiet cabs, as you may not hear people shouting.
- **NO PASSENGERS ALLOWED** -Do not carry passengers anywhere on, or in, the tractor or equipment, except as required for operation.
- Keep hands and clothing clear of moving parts.
- Do not clean, lubricate or adjust your equipment while it is moving.
- When halting operation, even periodically, set the tractor or towing vehicle brakes, disengage the PTO, shut off the engine and **remove the ignition key**.
- Be especially observant of the operating area and terrain - watch for holes, rocks or other hidden hazards. Always inspect the area prior to operation.
- **DO NOT** operate near the edge of drop-offs or banks.
- **DO NOT** operate on steep slopes as overturn may result.
- Operate up and down (not across) intermediate slopes. Avoid sudden starts and stops.



HIGHWAY AND TRANSPORT OPERATIONS

- Adopt safe driving practices:
- Keep the brake pedals latched together at all times. **NEVER USE INDEPENDENT BRAKING WITH MACHINE IN TOW AS LOSS OF CONTROL AND/OR UPSET OF UNIT CAN RESULT.**
- Always drive at a safe speed relative to local conditions and ensure that your speed is low enough for an emergency stop to be safe and secure. Keep speed to a minimum.
- Reduce speed prior to turns to avoid the risk of overturning.
- Avoid sudden uphill turns on steep slopes.
- Always keep the tractor or towing vehicle in gear to provide engine braking when going downhill. Do not coast.
- Do not drink and drive!
- Comply with state and local laws governing highway safety and movement of farm machinery on public roads.
- Use approved accessory lighting flags and necessary warning devices to protect operators of other vehicles on the highway during daylight and nighttime transport. Various safety lights and devices are available from your *dealer*.
- The use of flashing amber lights is acceptable in most localities. However, some localities prohibit their use. Local laws should be checked for all highway lighting and marking requirements.
- When driving the tractor and equipment on the road or highway under 40 kph (20 mph) at night or during the day, use flashing amber warning lights and a slow moving vehicle (SMV) identification emblem.
- Plan your route to avoid heavy traffic.
- Be a safe and courteous driver. Always yield to oncoming traffic in all situations, including narrow bridges, intersections, etc.
- Be observant of bridge loading ratings. Do not cross bridges rated lower than the gross weight as which you are operating.
- Watch for obstructions overhead and to the side while transporting.
- Always operate equipment in a position to provide maximum visibility at all times. Make allowances for increased length and weight of the equipment when making turns, stopping the unit, etc.
- Pick the most level possible route when transporting across fields. Avoid the edges of ditches or gullies and steep hillsides.
- Be extra careful when working on inclines.
- Maneuver the tractor or towing vehicle at safe speeds.
- Avoid overhead wires or other obstacles. Contact with overhead lines could cause serious injury or death.
- Avoid loose fill, rocks and holes; they can be dangerous for equipment operation or movement.
- Allow for unit length when making turns.
- Operate the towing vehicle from the operator's seat only.
- Never stand alongside of unit with engine running or attempt to start engine and/or operate machine while standing alongside of unit.
- Never leave running equipment attachments unattended.
- As a precaution, always recheck the hardware on equipment following every 100 hours of operation. Correct all problems. Follow the maintenance safety procedures.

Assembly

Hopper

1. Secure the spreader hopper support pan to the bottom of the hopper with the 4 carriage head bolts and nuts.
2. With the hopper opening facing up, insert the Retainer Bushing through the center hole of the hopper. The bushing rim should be on the inside of the hopper against the metal bowl and threads extending out the bottom.
3. Turn the hopper upside down.
4. Slip the 2-hole (Top Shutter Plate Flow Control) Galvanized disc over the bushing and against the hopper bottom.
5. Do the same with the 3-hole (Bottom shutter Plate Directional Control) Galvanized disc.
Important: See photo to be sure the discs are flipped the proper way.
6. Place the Nylon Flat washer over the threaded bushing against the shutter.
7. Thread the Spanner Nut to the Bushing and tighten.

Secure everything in place with the Spanner Nut.

IMPORTANT: Make sure both holes can be exposed after the discs are assembled. If not assembled correctly, the openings will not line up when the gates are supposed to be open.



Frame

1. Install the spin disc on the gearbox output shaft. Secure it in place with the 8mm roll pin in the lower most hole which is closest to the gearbox housing.
2. Install the deflector shield on the inside of the frame. Bolt it to the tabs welded in front of the lower hitch pins on the frame. Secure it in place with the 10 x 25mm bolts, flat washers, and Hex nuts.
3. Secure the Fixed Pivot to the deflector shield with an 8mm nut and flat washer.
4. Loosely attach the left and right hopper support arms to the frame using the M10 x 25mm bolts, lock washers and Hex nuts. The notch end goes on the frame. Do not tighten.



5. **Attaching the adjustment spreader lever.** Slip the adjustment lever through the scaled slot. Put the spring over the 10 x 70mm bolt. Insert the bolt through the spreader lever and put the fiber spacer next to the lever. Put the bolt through the frame and secure in place with the 10mm lock nut. Compress the spring by tightening the bolt and nut until there is resistance in moving the handle up and down.



6. **Installing the Threaded Adjustment Block.** Slip the wing bolt through the indication gauge and then through the scaled slot on the frame. Thread the wing bolt through the solid block to secure it to the frame.

7. Flip the hopper right side up, and position it over the frame. Slide center hole over the gearbox output shaft. Secure the back of the hopper in place by slipping the large washer over a 10 x 35mm bolt and sliding it through hopper and then through the frame near the top hitch. Secure it in place with a 10mm flat washer, lock washer and hex nut. Insert the support bar and bolt it in place with the 10 x 25mm bolts. The flat washers, lock washers and hex nuts are tightened against the hopper supports.

8. Install the nylon dust washer over the gearbox output shaft and slide it down until it rests against the bottom of the hopper. Install the agitator with the 8 x 50mm bolt and lock nut.

9. Attach the Tie Rod to the Top Shutter Plate and secure it with R clips and 2 - 10mm flat washers.

10. Install the Directional lever to the Bottom Shutter Plate and secure the end to directional disc with 2mm cotter pin and 8mm flat washer and the R clip to the Fixed Pivot bolted to the deflector shield.

Tighten all hardware.



Operation

Attaching to the tractor

- 1 With the Fertilizer Spreader on a level surface, back the Cat. 1 tractor so the tractor lift arms are even with the fertilizer spreader lower hitch pins. Lower or raise the tractor hitch arms until the 7/8" bushing in the arm is level with the hitch pins. **Be sure nothing is between the tractor and the cutter before backing up.**
- 2 Insert the lower link hitch hole of the tractor's lift arm over the implement's hitch pin.
- 3 Secure the lift arm in place by using a 7/16" lynch pin or other fastener.
- 4 Repeat with the other arm.
- 5 Connect the driveline to the tractor's PTO output shaft. Secure driveline to gearbox with the bolt supplied with the driveline.
- 6 Connect the tractor top link to the upper pivot hitch of the fertilizer spreader.
- 7 Start the tractor and slowly raise the fertilizer spreader. Check for drawbar interference. **Be sure that the PTO driveline does not bottom out when lifting the fertilizer spreader to maximum height. If it does appear that it could bottom out, it is necessary to shorten the PTO driveline. (See Shortening a PTO Driveline section). Ensure that in the working position there is an overlap of a minimum of 1/3 the length of each profile.**

Shortening a PTO Driveline

- 1 With the implement attached to the tractor's three point hitch, and the PTO driveline not installed, separate the PTO driveline. Attach the implement end to the implement and the other end to the tractor PTO input shaft.
- 2 Raise the implement by using the tractor's hydraulic 3-point hitch to maximum lift height.
- 3 Hold the half shafts next to each other and mark them so each end is approximately 1/2" from hitting the end of the telescopic profiles.
- 4 Shorten the inner and out guard tubes equally.
- 5 Shorten the inner and outer profiles by the same length as the guard tubes. Using a rattail file, round off all sharp edges and burrs. Grease the telescopic profile generously before reassembling.



Do not shorten too much, the proper overlap is a minimum of 1/3 the length of each profile.

Spreading Height

Before operating the spreader, make sure that the spreading disc is set to the horizontal position and it is about 30" from ground level.

Spreading with revolving vanes.

Since fertilizers vary with respect to weights and density, in order to obtain a perfect spreading it may be necessary to adjust the vanes in order to compensate for these differences. The vanes are usually set to the center position. By moving the vanes forward, distribution is increased towards the left side of the tractor operator, moving them backwards causes distribution to be increased towards the right.

Left– Center – Right Spreader pattern

A simple adjustment of the lower lever allows direction control of the spreader pattern towards the right, center or left of the tractor

Removal and Storage

After finishing, remove the spreader from the tractor.

1. Put the PTO driveline in a safe location so it will not become damaged.
2. Wash out the spreader, removing all fertilizer or other material.



FOLLOWING OPERATION

- Following operation, or when unhitching, stop the tractor or towing vehicle, set the brakes, disengage the PTO and all power drives, shut off the engine and **remove the ignition keys**.
- Store the unit in an area away from human activity.
- Do not park equipment where it will be exposed to livestock for long periods of time. Damage and livestock injury could result.
- Do not permit children to play on or around the stored unit.
- Make sure all parked machines are on a hard, level surface and engage all safety devices.
- Wheel chocks may be needed to prevent unit from rolling.
- Good maintenance is your responsibility. Poor maintenance is an invitation to trouble.
- Make sure there is plenty of ventilation. Never operate the engine of the towing vehicle in a closed building. The exhaust fumes may cause asphyxiation.
- Be certain all moving parts on attachments have come to a complete stop before attempting to perform maintenance.
- Always use the proper tools or equipment for the job at hand.
- Use extreme caution when making adjustments.
- Never replace hex bolts with less than grade five bolts unless otherwise specified.
- After servicing, be sure all tools, parts and service equipment are removed.
- Where replacement parts are necessary for periodic maintenance and servicing, genuine factory replacement parts must be used to restore your equipment to original specifications. The manufacturer will not claim responsibility for use of unapproved parts and/or accessories and other damages as a result of their use.
- If equipment has been altered in any way from original design, the manufacturer does not accept any liability for injury or warranty.

MAINTENANCE

Although the hopper of your spreader is fabricated with polypropylene, and therefore impervious to rust and corrosion, it is very important that the other parts of the spreader be kept clean due to the corrosive properties of fertilizers.

Item	Interval
PTO shaft grease zerks	Grease weekly
PTO shaft telescopic tubing	Grease every 40 hours
Clean spreader	After each use.

The Gearbox is sealed and filled with grease so no maintenance is necessary.

SPREADING CHART FOR FERTILIZER

NOTE: Spread widths of fertilizer will vary according to type.

Always check actual spread width and application rate.

Spread Chart settings are approximate - always make a trial run to check actual application rate.

FERTILIZER TYPE	SPREAD WIDTH IN FEET	TRACTOR SPEED (MPH)	QUANTITY TO BE SPREAD, IN POUNDS PER ACRE AT CONTROL LEVEL SETTING INDICATED								
			1.0	1.5	2.0	3.0	4.0	5.0	6.0	7.0	8.0
Coarse Grain Fertilizers	40	2.5		97	139	246	414	516	640	789	935
		5		48	69	129	204	260	320	392	472
		7.5		37	53	85	139	175	218	260	323
Medium Grain Fertilizers	34	2.5	85	122	175	329	467	597	739	825	945
		5	51	73	105	170	236	303	376	417	478
		7.5	43	62	73	113	163	198	253	286	325
Fine Grain Fertilizers	26	2.5	60	85	122	204	340	440	551	647	770
		5	32	46	61	108	178	224	280	324	396
		7.5	21	30	41	93	122	153	193	220	263
Ammonium Nitrate	33	2.5		61	226	377	563	724	896	1052	1242
		5		28	116	190	284	366	448	525	622
		7.5		23	74	124	191	244	298	352	422
Urea (Carbamide)	26	2.5	77	110	303	458	669	818	1004	1171	
		5	41	59	150	231	300	411	500	590	
		7.5	26	37	100	150	221	275	336	392	

SPREADING CHART FOR SEED

NOTE: Spread widths of Seed will vary according to type.

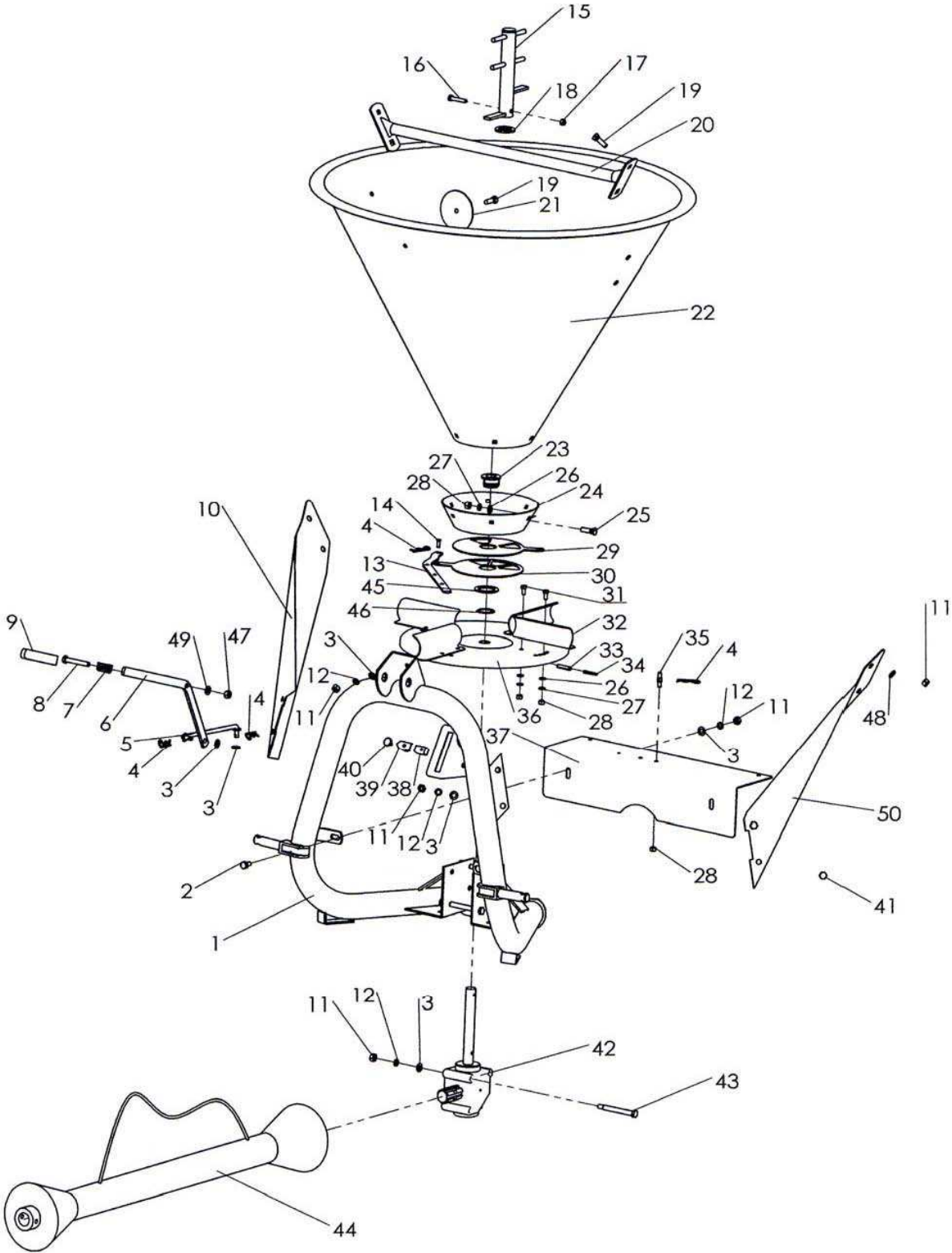
Always check actual spread width and application rate.

Spread Chart settings are approximate - always make a trial run to check actual application rate.

MATERIAL	SPREAD WIDTH IN FEET	TRACTOR SPEED (MPH)	POUNDS PER ACRE (APPROXIMATE) AT CONTROL LEVEL SETTING INDICATED								
			.05	1.0	2.0	3.0	4.0	5.0	6.0	7.0	8.0
Alfalfa & Clover	26	4	14	48	118						
		5	11	39	95						
		6	9	32	79						
		7.5	7.5	26	63						
Barley	28	4				90	107	151	186		
		5				72	86	121	149		
		6				60	71	100	124		
		7.5				48	57	81	99		
Bluegrass & Bermuda Grass	18	4			20.5	72					
		5			16.5	45					
		6			13.5	36					
		7.5			11	24					
Fescue & Ryegrass	18	4			11	34	74				
		5			9	27	59				
		6			7.5	22	49				
		7.5			6	18	39				
Rye	33	4				86	135	186	227		
		5				69	109	149	182		
		6				57	90	124	151		
		7.5				46	72	99	121		
Sudan Grass	33	4			37	58	92				
		5			30	47	74				
		6			25	39	61				
		7.5			20	31	49				
Soybeans	40	4					127	150	170	200	
		5					102	120	136	160	
		6					85	100	113	133	
		7.5					68	80	90	106	
Wheat	33	4			70	111	151	198			
		5			56	89	121	159			
		6			46	74	100	147			
		7.5			37	59	80	106			

Bush Hog

Frame Parts Breakdown



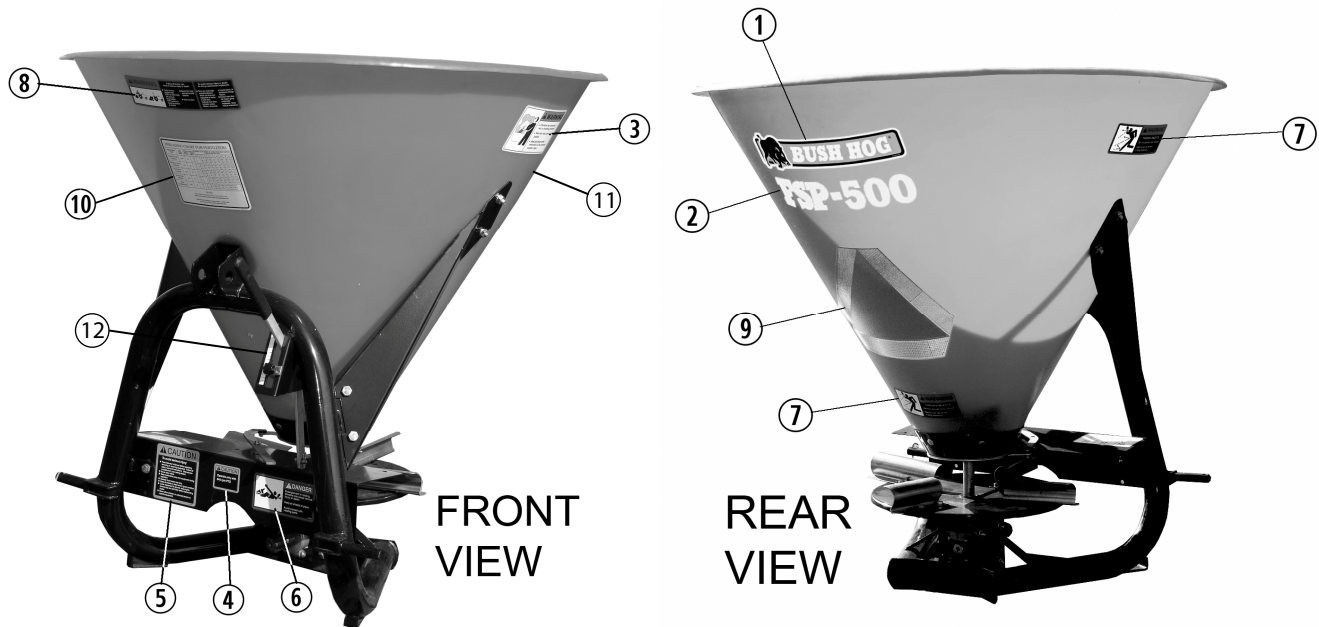
Bush Hog

Frame Parts Breakdown

Ref. No.	Part No.	Description	Qty. Req'd.
1	50073769	Base Assembly	1
2	44390BH	Bolt, Hex Head M10x20,Zinc	2
3	15830	Flat Washer Zinc Plated 10mm	5
4	50073771	R Clips	4
5	50073772	Tie Rod	1
6	50073773	Lever	1
7	50073774	Spreader Spring	1
8	50073775	Bolt, Hex Head M10x70,Zinc	1
10	50073776	Hopper Support Arm (Right Side)	1
11	44342	Hex Head Nut 10 x 1.5	14
12	44198	Split Type 10mm Lock Washer	10
13	50073778	Directional Lever	1
14	50073779	Shutter Adjustment Pivot Joint	1
15	50073780	Agitator	1
16	50073781	Hex Head Bolt 8 x 2.5 x 45	1
17	50073782	8mmNylon Locking Nut	1
18	50073783	25 x 60 x 3.0 Nylon Washer	1
19	50073784	Bolt, Carriage, M10x25, Zinc	5
20	50073785	Bar - Hopper reinforcement	1
21	50073786	Hopper Support Washer	1
22	50073787	Hopper W/Decals FSP-500 Model	1
	50073872	Hopper W/Decals FSP-800 Model	1
23	50077192	Retainer Bushing (Used with spanner nut)	1
24	50073789	Hopper Support Pan	1
25	50073790	Bolt Carridge,M8x25, Zinc	6
26	44216	8mm Flat Washer Zinc Plated	14
27	44311BH	Washer,Lock,8mm, Zinc	14
28	44306BH	Hex Head Nut 8 x 1.25	15
29	50073791	Top Shutter Plate (Flow Control)	1
30	50073792	Bottom Shutter Plate (Directional)	1
31	44316BH	Hex Head Bolt 8 x 1.25 x 16	8
32	50073794	Distributor Vane	4
33	50073795	Roll Pin,ø8*40,	1
34	50073796	Roll Pin,ø6*40,	1
35	50073797	Lever, Fixed Pivot	1
36	50073798	Spreader Disc	1
37	50073799	Front Shield W/Decal	1
38	50073850	Threaded Adj. Block	1
39	50073851	Gauge Pointer	1
40	50073852	Thumb Screw	1
41	50073853	Bolt Hex Head M10x25, Zinc	4
42	50073854	Gearbox	1
43	50073855	Hex Bolt 10 x 1.5 x 110	3
44	50073856	PTO Assembly (complete)	1
45	50077193	Nylon Flat Washer	1
46	50077194	Spanner Nut	1
47	44154BH	M10 Lock Nut	1
48	44198	Washer, Lock	4
49	50073861	Adjustment Lever Washer, Bakelite	1
50	50073862	Hopper Support Arm (Left Side)	1

SAFETY and MARKING DECAL LOCATION

Ref. No.	Part No.	Description	Qty. Req'd.
1	50065309	Bush Hog Decal	1
2	50073874	Model Decal FSP800	1
	50073871	Model Decal FSP500	1
3	50073793	Warning Decal (Protective Equipment)	1
4	50073893	Caution Decal (540 RPM)	1
5	50073894	Caution Decal (Avoid Serious Injury)	1
6	50073895	Danger Decal (Entanglement)	1
7	50073896	Warning Decal (Thrown Objects)	2
8	50073897	Warning Decal (Falling Off / Underneath)	1
9	50073898	SMV Decal (Not Shown)	1
10	50073899	Spreading Chart Decal	1
11	D960	Warning Decal (Proposition 65)	1
12	50076959	Adjustment Lever	1

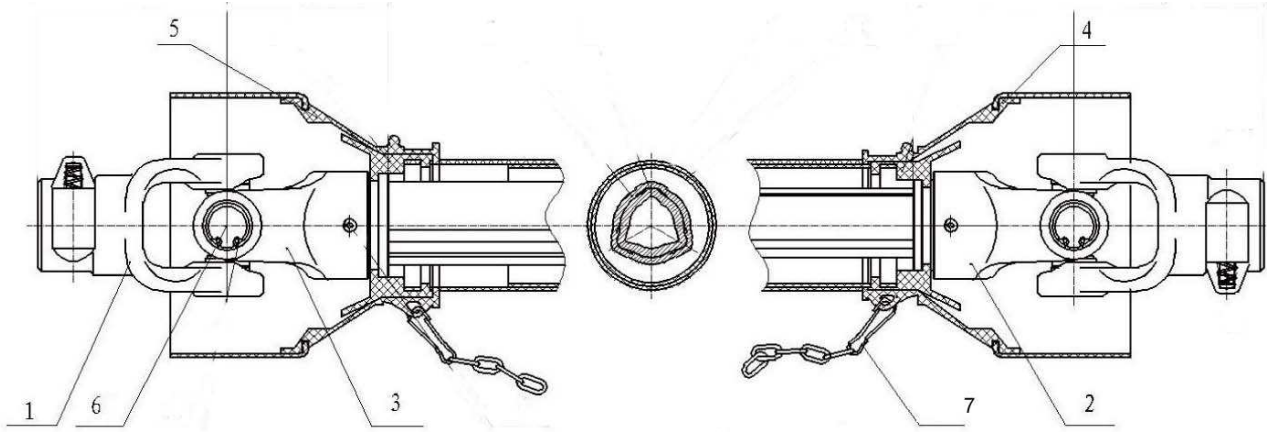


WARNING!

Operating, servicing and maintaining this equipment can expose you to chemicals including gasoline, diesel fuel, lubricants, petroleum products, engine exhaust, carbon monoxide, and phthalates, which are known to the State of California to cause cancer and birth defects or other reproductive harm. To minimize exposure, avoid breathing exhaust, do not idle the engine except as necessary, service your vehicle in a well-ventilated area and wear gloves or wash your hands frequently when servicing your vehicle. Battery post, terminals and related accessories contain lead and lead compounds, chemicals known to the state of California to cause cancer, birth defects or other reproductive harm. For more information go to www.P65Warnings.ca.gov. This Website, operated by California's Office of Environmental Health Hazard Assessment, provides information about these chemicals and how individuals may be exposed to them.

Bush Hog

PTO Shaft - Parts Breakdown



Ref. No.	Part No.	Description	Qty. Req'd.
1	50073863	Yoke	2
2	50073864	Inner Yoke complete	1
3	50073865	Outer Yoke complete	1
4	50073866	Inner PTO Guard Complete	1
5	50073867	Outer PTO Guard Complete	1
6	50073868	Cross & Bearing	2
7	50073869	Safety Chain	2
	50073856	PTO Shaft Complete	

LIMITED WARRANTY

Bush Hog warrants to the original purchaser of any new spreader from Bush Hog, purchased from an authorized Bush Hog dealer, that the equipment be free from defects in material and workmanship for a period of one (1) year for non-commercial, state, and municipalities' use, ninety (90) days for commercial use from date of retail sale. Warranty for rental purposes is thirty (30) days. The obligation of Bush Hog to the purchaser under this warranty is limited to the repair or replacement of defective parts.

This limited warranty does not apply to and excludes wear items such as shear pins, tires, tubes knives, blades or other wear items. Oil or grease is not covered by this warranty.

All obligations of Bush Hog under this limited warranty shall be terminated if:

Proper service is not preformed on the machine The machine is modified or altered in any way. The machine is being used or has been used for purposes other than those for which the machine was intended.

DISCLAIMER OF IMPLIED WARRANTIES & CONSEQUENTIAL DAMAGES Bush Hog obligation under this limited warranty, to the extent allowed by law, is in lieu of all warranties, implied or expressed, including implied warranties of merchantability and fitness for a particular purpose and any liability for incidental and consequential damages with respect to the sale or use of the items warranted. Such incidental and consequential damages shall include but not be limited to: transportation charges other than normal freight charges; cost of installation other than cost approved by Bush Hog; duty; taxes; charges for normal service or adjustment; loss of crops or any other loss of income; rental of substitute equipment, expenses due to loss, damage, detention or delay in the delivery.

Read and understand the complete Warranty Statement found in this Manual. At time of purchase your dealer should register your product with warranty information on line with Bush Hog. Dealer should supply the customer with a printed copy of the completed warranty registration.



BUSH HOG[®]
Performance You Can Count OnSM

2501 Griffin Ave. • Selma, AL 36703
Telephone (334) 874-2700 • www.bushhog.com