



BUSH HOG®

2308 MULTI SPINDLE ROTARY MOWER

Revised 06/23

PARTS MANUAL SECTION 108



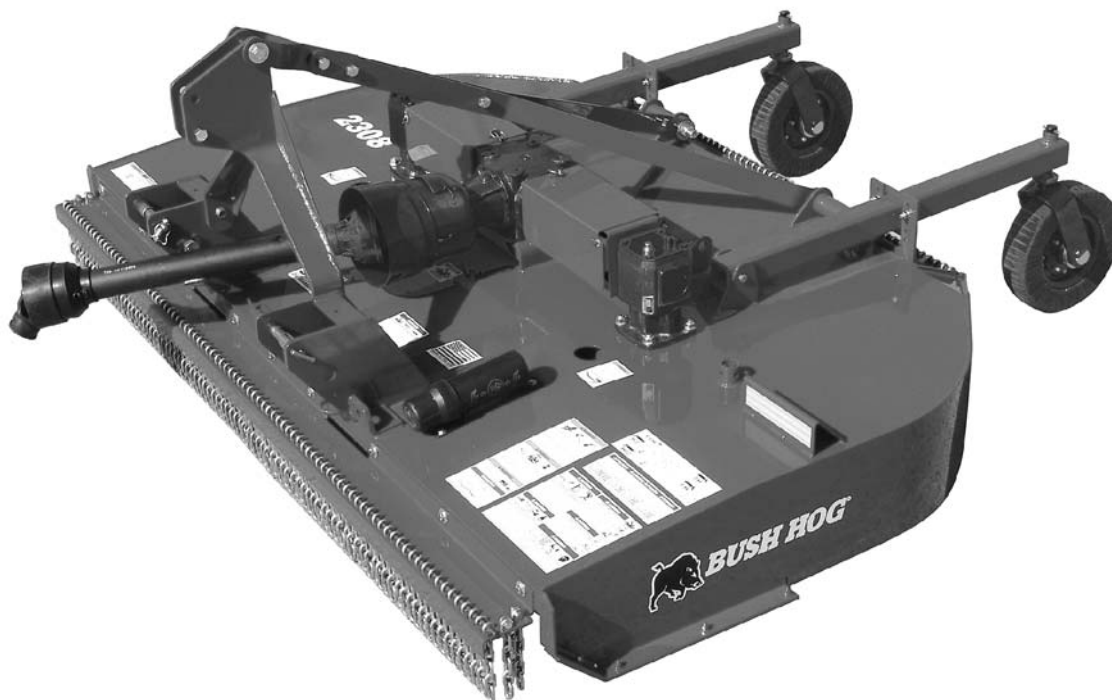
An Operator's Manual was shipped with the equipment. The Operator's Manual is an integral part of the safe operation of this machine and must be maintained with the unit at all times. **READ, UNDERSTAND, and FOLLOW** the Safety and Operation Instructions contained in this manual before operating the equipment. If the Operator's Manual is not with the equipment, contact your dealer or Bush Hog to obtain a copy before operating the equipment.

Safety Video

Important Operating and Safety Instructions are found in the Mower Safety Video that can be instantly accessed on the internet at: www.algqr.com/bve



www.algqr.com/bve



BUSH HOG®

2501 Griffin Ave.
Selma, AL 36703
Parts Ordering 1-800-304-2836
www.bushhog.com

ATENCIÓN!

LEA EL INSTRUCTIVO

Si No Lee Ingles, Pida Ayuda a Alguien
Que Si Lo Lea Para Que le Traduzca las
Medidas de Seguridad.



**MEMBER OF THE
ALAMO GROUP**
ALWAYS ON THE CUTTING EDGE®

©2019 Alamo Group Inc.

PARTS ORDERING GUIDE

The following instructions are offered to help eliminate needless delay and error in processing purchase orders for the equipment in this section.

1. The Parts Section is prepared in logical sequence and grouping of parts that belong to the basic machine featured in this manual. Part Numbers and Descriptions are given to help locate the parts and quantities required.
2. The Purchase Order must include the name and address of the person or organization ordering the parts, who should be charged, and if possible, the serial number of the machine for which the parts are ordered.
3. The Purchase Order must clearly list the quantity of each part, the complete and correct part number (be sure to include all periods), and the basic name of the part.
4. The Manufacturer reserves the right to substitute parts where applicable.
5. Some parts are unlisted items which are special production items not normally stocked and are subject to special handling. Request a quotation for such parts before sending a Purchase Order.
6. The Manufacturer reserves the right to change prices without prior notice.



For maximum safety and to guarantee optimum product reliability, always use genuine BUSH HOG Parts. The use of inferior replacement parts may cause premature or catastrophic failure which could result in serious injury or death. Direct any questions regarding parts to:

BUSH HOG
2501 Griffin Ave.
Selma, AL 36703
www.bushhog.com
Contact Us
800-304-2836



BUSH HOG®

To the Owner/Operator/Dealer

All implements with moving parts are potentially hazardous. There is no substitute for a cautious, safe-minded operator who recognizes the potential hazards and follows reasonable safety practices. The manufacturer has designed this implement to be used with all its safety equipment properly attached to minimize the chance of accidents.

BEFORE YOU START! Read the safety messages on the implement and shown in your manual. Observe the rules of safety and common sense!



DANGER

FAILING TO FOLLOW SAFETY MESSAGES AND OPERATING INSTRUCTION CAN CAUSE SERIOUS BODILY INJURY OR EVEN DEATH TO OPERATOR AND OTHERS IN THE AREA.

1.



2. NO RIDERS. NO CHILDREN OPERATORS.



3. USE SAFETY SHOES, HARD HAT, SAFETY GLASSES, SEAT BELTS, ROPS & OPS.



4. BLOCK UP SECURELY BEFORE WORKING UNDER.



1. Study and understand Operator's Manuals, Safety Decals, and Instructional Decals for tractor and implement to prevent misuse, abuse, and accidents. Practice before operating in a confined area or near passersby.

- Learn how to stop engine suddenly in an emergency. Be alert for passersby and especially children.

2. Allow no children on or near folding mower or tractor. Allow no riders on tractor or implement. Falling off may cause serious injury or death from being run over by tractor or mower or contact with rotating blades.

3. Operate only with tractor having Roll-Over Protective Structure (ROPS) and with seat belt securely fastened to prevent injury and possible death from falling off or tractor overturn.

- Personal Protective Equipment such as Hard Hat, Safety Glasses, Safety Shoes, & Ear Plugs are recommended.

4. Block up or support raised machine and all lifted components securely before putting hands or feet under or working underneath any lifted component to prevent crushing injury or death from sudden dropping or inadvertent operation of controls. Make certain area is clear before lowering or folding.

5. Before transporting, put Lift Lever in detent or full-lift position. Install Transport Safety Devices securely on folding mowers. Put Booms securely in Transport Rest.

- Folding and Boom Mowers have raised center of gravity. Slow down when turning and on hillsides.

6. Make certain that SMV sign, warning lights, and reflectors are clearly visible. Follow local traffic codes.

7. Never operate with Cutting Head or Folding Section raised if passersby, bystanders, or traffic are in the area to reduce possibility of injury or death from objects thrown by Blades under Guards or mower structure.

8. Before dismounting, secure implement in transport position or lower to ground.

- Put tractor in park position or set brake, disengage PTO, stop engine, remove key, and wait until noise of rotation has ceased to prevent crushing by entanglement in rotating parts which could cause injury or death.
- Never mount or dismount a moving vehicle. Crushing from rollover may cause serious injury or death.

5. TRANSPORT SAFELY, LOCK UP.



6. USE SMV, LIGHTS, & REFLECTORS.



7. DO NOT OPERATE WITH CUTTER OR WING RAISED



8. DO NOT MOUNT OR DISMOUNT WHILE MOVING.



02967827

WARRANTY INFORMATION:

Read and understand the complete Warranty Statement found in this Manual. Fill out the Warranty Registration Form in full and return it to within 30 Days. Make certain the Serial Number of the Machine is recorded on the Warranty Card and on the Warranty Form that you retain.

LIMITED WARRANTY



Bush Hog warrants to the original purchaser of any new Bush Hog equipment, purchased from an authorized Bush Hog dealer, that the equipment be free from defects in material and workmanship for a period of one (1) year for non-commercial, state and municipalities' use and ninety (90) days for commercial use from date of retail sale. The obligation of Bush Hog to the purchaser under this warranty is limited to the repair or replacement of defective parts.

Replacement or repair parts installed in the equipment covered by this limited warranty are warranted for ninety (90) days from the date of purchase of such part or to the expiration of the applicable new equipment warranty period, whichever occurs later. Warranted parts shall be provided at no cost to the user at an authorized Bush Hog dealer during regular working hours. Bush Hog reserves the right to inspect any equipment or parts which are claimed to have been defective in material or workmanship.

DISCLAIMER OF IMPLIED WARRANTIES & CONSEQUENTIAL DAMAGES

Bush Hog's obligation under this limited warranty, to the extent allowed by law, is in lieu of all warranties, implied or expressed, **INCLUDING IMPLIED WARRANTIES OF MERCHANTABILITY AND FITNESS FOR A PARTICULAR PURPOSE** and any liability for incidental and consequential damages with respect to the sale or use of the items warranted. Such incidental and consequential damages shall include but not be limited to: transportation charges other than normal freight charges; cost of installation other than cost approved by Bush Hog; duty; taxes; charges for normal service or adjustment; loss of crops or any other loss of income; rental of substitute equipment, expenses due to loss, damage, detention or delay in the delivery of equipment or parts resulting from acts beyond the control of Bush Hog.

THIS LIMITED WARRANTY SHALL NOT APPLY:

1. To vendor items which carry their own warranties, such as engines, tires, and tubes.
2. If the unit has been subjected to misapplication, abuse, misuse, negligence, fire or other accident.
3. If parts not made or supplied by Bush Hog have been used in connection with the unit, if, in the sole judgement of Bush Hog such use affects its performance, stability or reliability.
4. If the unit has been altered or repaired outside of an authorized Bush Hog dealership in a manner which, in the sole judgement of Bush Hog, affects its performance, stability or reliability.
5. To normal maintenance service and normal replacement items such as gearbox lubricant, hydraulic fluid, worn blades, or to normal deterioration of such things as belts and exterior finish due to use or exposure.
6. To expendable or wear items such as teeth, chains, sprockets, belts, springs and any other items that in the company's sole judgement is a wear item.

NO EMPLOYEE OR REPRESENTATIVE OF BUSH HOG IS AUTHORIZED TO CHANGE THIS LIMITED WARRANTY IN ANY WAY OR GRANT ANY OTHER WARRANTY UNLESS SUCH CHANGE IS MADE IN WRITING AND SIGNED BY BUSH HOG'S SERVICE MANAGER, 2501 GRIFFIN AVE., SELMA, ALABAMA 36703.



Record the model number, serial number and date purchased. This information will be helpful to your dealer if parts or service are required.

MODEL NUMBER _____

SERIAL NUMBER _____

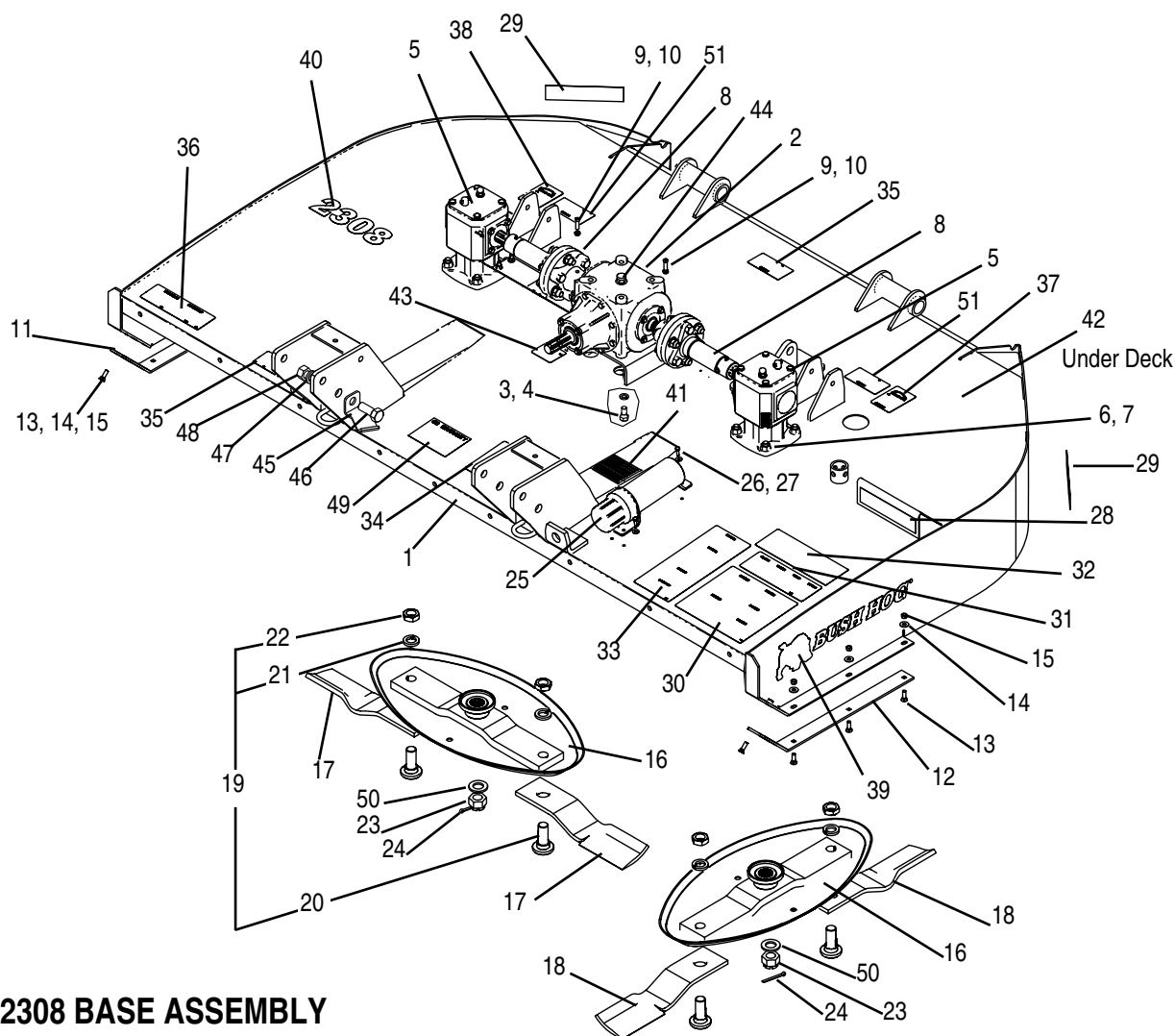
DATE OF RETAIL SALE _____

MAKE CERTAIN THE WARRANTY
HAS BEEN FILED WITH BUSH HOG
SELMA, ALABAMA

2308 ROTARY MOWER

ALPHABETICAL INDEX

CONTENTS	PAGE
Axle Assembly	108-1-3
Axle Arm & Related Parts	108-4-5
Axle, Tailwheel Lift	108-4-2
Caster Assembly w/Laminated Tire	108-4-3
Chain, Safety Tow.....	108-4-4
Chains, Front & Rear	108-1-5
Cross Coupler Shaft.....	108-3-3
Cylinder, Hydraulic.....	108-5-1
Decal Kit.....	108-6-1
Deck Assembly, 2308	108-1-1
Driveline Lift and Semi Mount	108-3-1
Driveline Pull Type	108-3-2
Gearbox Assembly Center Transfer	108-2-1
Gearbox Assembly Outboard.....	108-2-2
Hitch, Lift & Semi-Mount	108-4-1
Hitch, Pull.....	108-4-4
Hose Holder Rod	108-4-4
Hydraulic Hoses & Fittings	108-5-2
Jackstand.....	108-4-4
Ratchet Assembly	108-5-2
Rear Metal Band	108-1-4
Shield Assembly	108-1-3
Stop Collar Kit.....	108-5-2
Tire, Solid.....	108-4-5

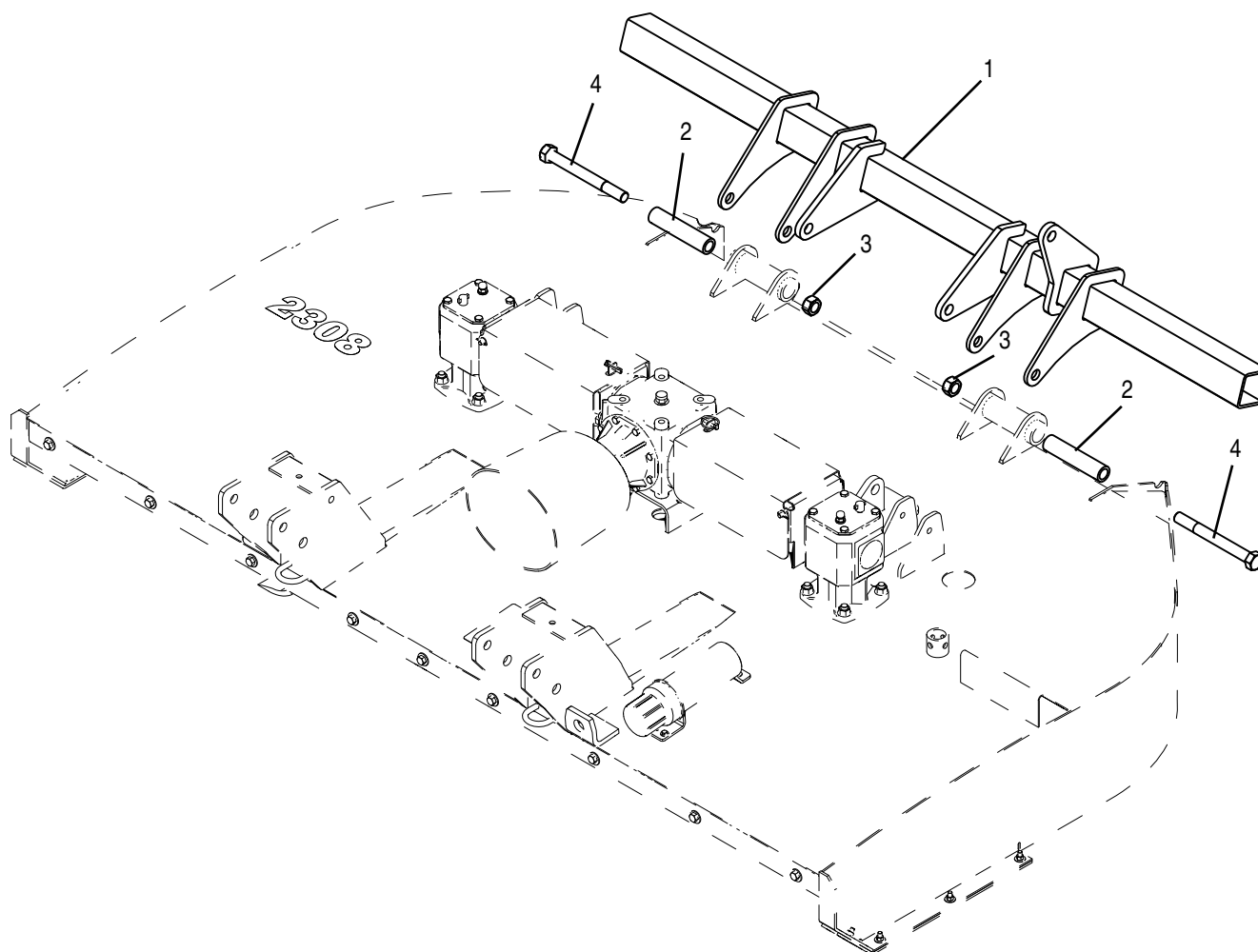


2308 BASE ASSEMBLY

REF. NO.	PART NO.	DESCRIPTION	QTY.	REF. NO.	PART NO.	DESCRIPTION	QTY.
1	50076012	Deck Weldment w/Decals	1	26	1160807	Capscrew, 1/4" x 7/8" Gr. 5	3
	50076011	Decal Kit	1	27	15608	Locknut, 1/4"	3
2	50075003	Transfer Gearbox Assy (1:1.5)	1	28	50031212	Reflector, Amber	1
3	15089	Capscrew, 5/8" x 1-1/4" Gr. 5	4	29	50031214	Reflector, Red	2
4	19486	Lockwasher, 5/8"	4	30	D549	Decal, Danger/Operation	1
5	00791027	Gearbox Assy, EZ40-1:1.47	2	31	D813	Decal, Danger - Multilingual	1
6	20947	Capscrew, 5/8" x 2" Gr. 5	12	32	D581	Decal, Lubrication Chart	1
7	20414	Locknut, 5/8" Gr G, Flanged	12	33	D553	Decal, Warning	1
8	50075959	Cross Shaft Driveline	2	34	D547	Decal, Danger	1
9	15112BH	Setscrew, Sq Hd Cup Pt, 3/8" x 1-1/4"	4	35	D614	Decal, Danger (Thrown Object)	2
10	10151200	Jam Nut, 3/8"	4	36	D559	Decal, Genuine Bush Hog Parts	1
11	50074929	Skid Shoe, RH - Bolt On	1	37	D551	Decal, Blade Rotation - CCW	1
12	50074930	Skid Shoe, LH - Bolt On	1	38	D552	Decal, Blade Rotation - CW	1
13	3161212	#3 Hd Plow Bolt, 3/8" x 1-1/4" Gr. 5	8	39	50061049	Decal, Bush Hog - 4.85" x 22"	2
14	15915BH	Flatwasher, 3/8"	8	40	50075990	Decal, Model - 2308	1
15	9131200	Locknut, 3/8" Gr C	8	41	50074259	Decal, Made In USA	1
16	50076617	Pan Weldment, 6" (Oval)	2	42	D454	Decal, Warning (Crushing Hazard)	1
17	50076608	Blade, 15.25" CW, Parallel Uplift, 2.0" Offset	2	43	D546	Decal, Danger (Guard Missing)	1
18	50076611	Blade, 15.25" CCW, Parallel Uplift, 2.0" Offset	2	44	81572	Vent Plug	1
19	63607	Blade Bolt Kit (2 Bolts, Nuts, Lockwashers)	2	45	50076034	Holder, Driveline	1
20	7919BH	Blade Bolt	4	46	20232BH	Capscrew, 1" x 2-1/2"	1
21	20322	Lockwasher, 1-1/8"	4	47	15821	Lockwasher, 1"	1
22	252BH	Jam Nut, 1-1/8" NF	4	48	19502	Hex Nut, 1"	1
23	00754777	Nut, Castle M24-2.0	2	49	50028366	Warrenty Decal	1
24	70497	Pin, Cotter M5 x 50	2	50	00778246	Flatwasher Hardened 25 x 44 x 4	1
25	50035829	Tube, Owners Manual	1	51	D608	Decal, Warning, Blade Timing	2

AXLE ASSEMBLY

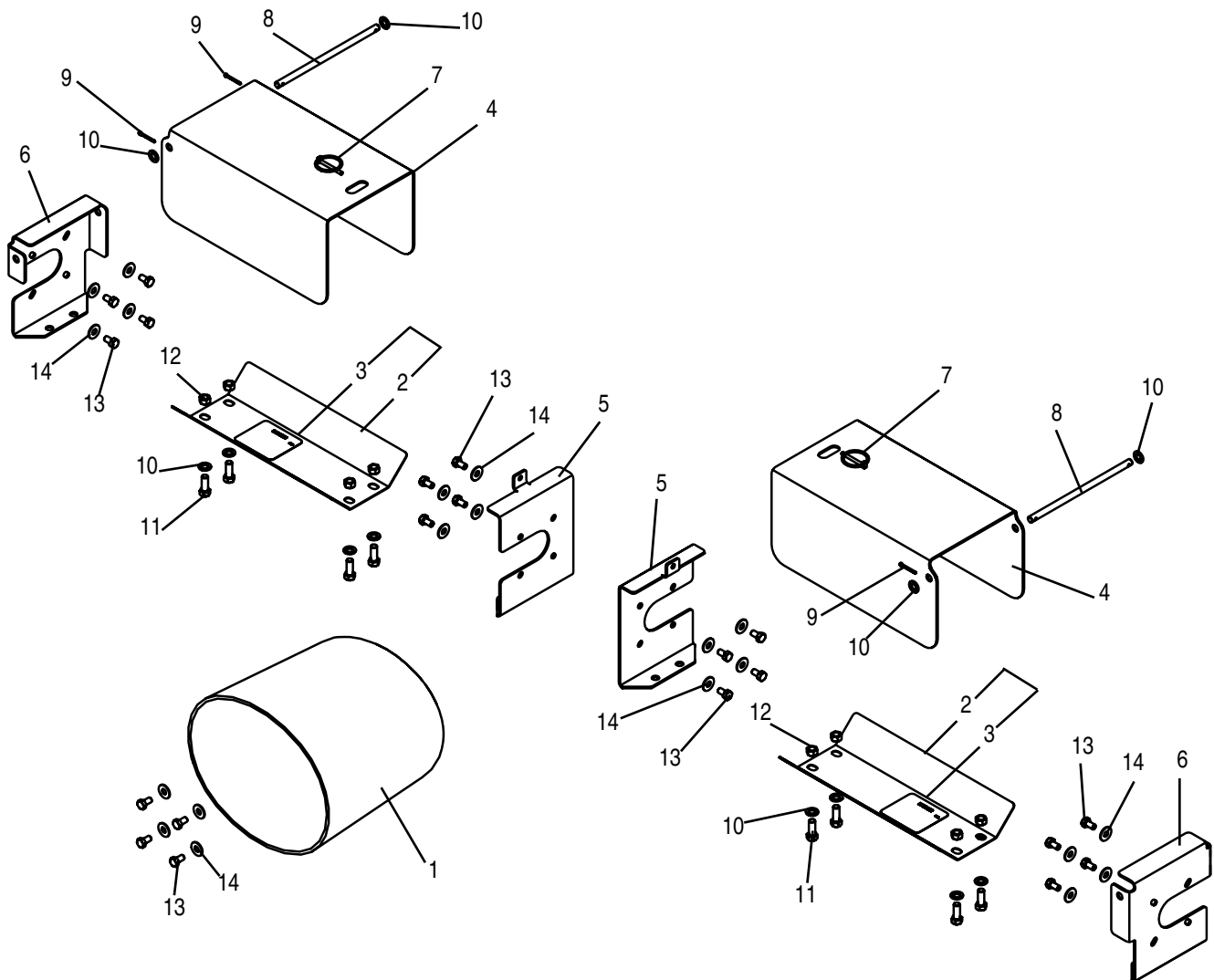
For 2308 Pull Models



REF. NO.	PART NO.	DESCRIPTION	QTY.
1	50074999	Axle Weldment	1
2	91507	Bushing	2
3	9163200	Locknut, 1"	2
4	20100	Capscrew, 1" x 9-1/2"	2

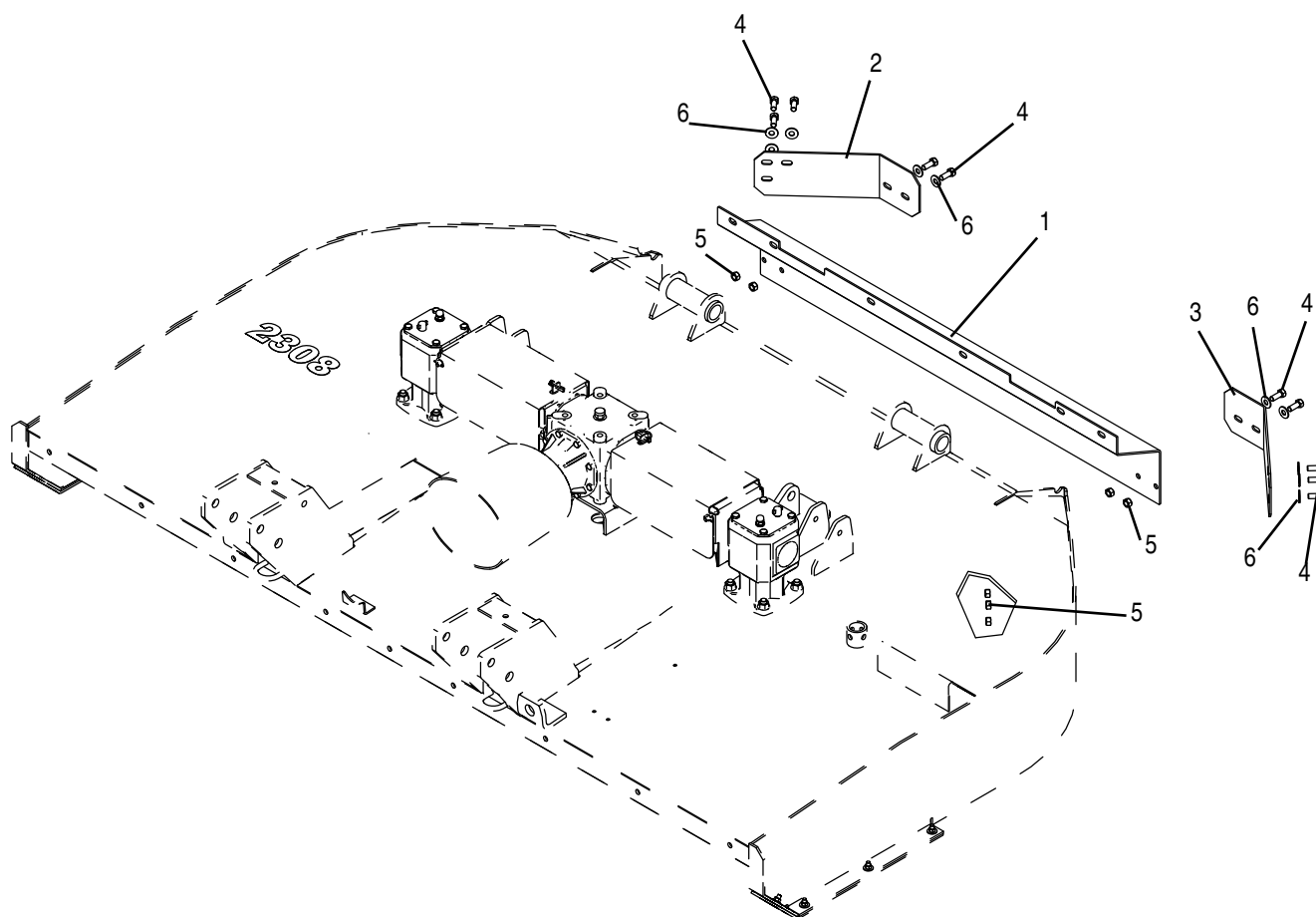
DRIVELINE SHIELDING

For 2308 Models



REF. NO.	PART NO.	DESCRIPTION	QTY.
1	81592	Input Shield	1
2	50076014	Bottom Shield w/Decal	2
3	D546	Decal, Danger (Guard Missing)	2
4	50075987	Shield, Cross Shaft	2
5	50076068	Bracket, Center Shield	2
6	50076070	Bracket, Gearbox Side Shield	2
7	20312	Pin, Lynch-Forged	2
8	50029752	Pin, Hinge	2
9	15662	Cotter Pin, 1/8" x 1"	4
10	15830	Flatwasher, 3/8" SAE	12
11	20034	Capscrew, 3/8" x 1"	8
12	9131200	Locknut, 3/8" Gr C	8
13	90560	Capscrew, M8 x 1.25 x 15 Gr. 8.8 w/Patch	20
14	15907BH	Flatwasher, 5/16"	20

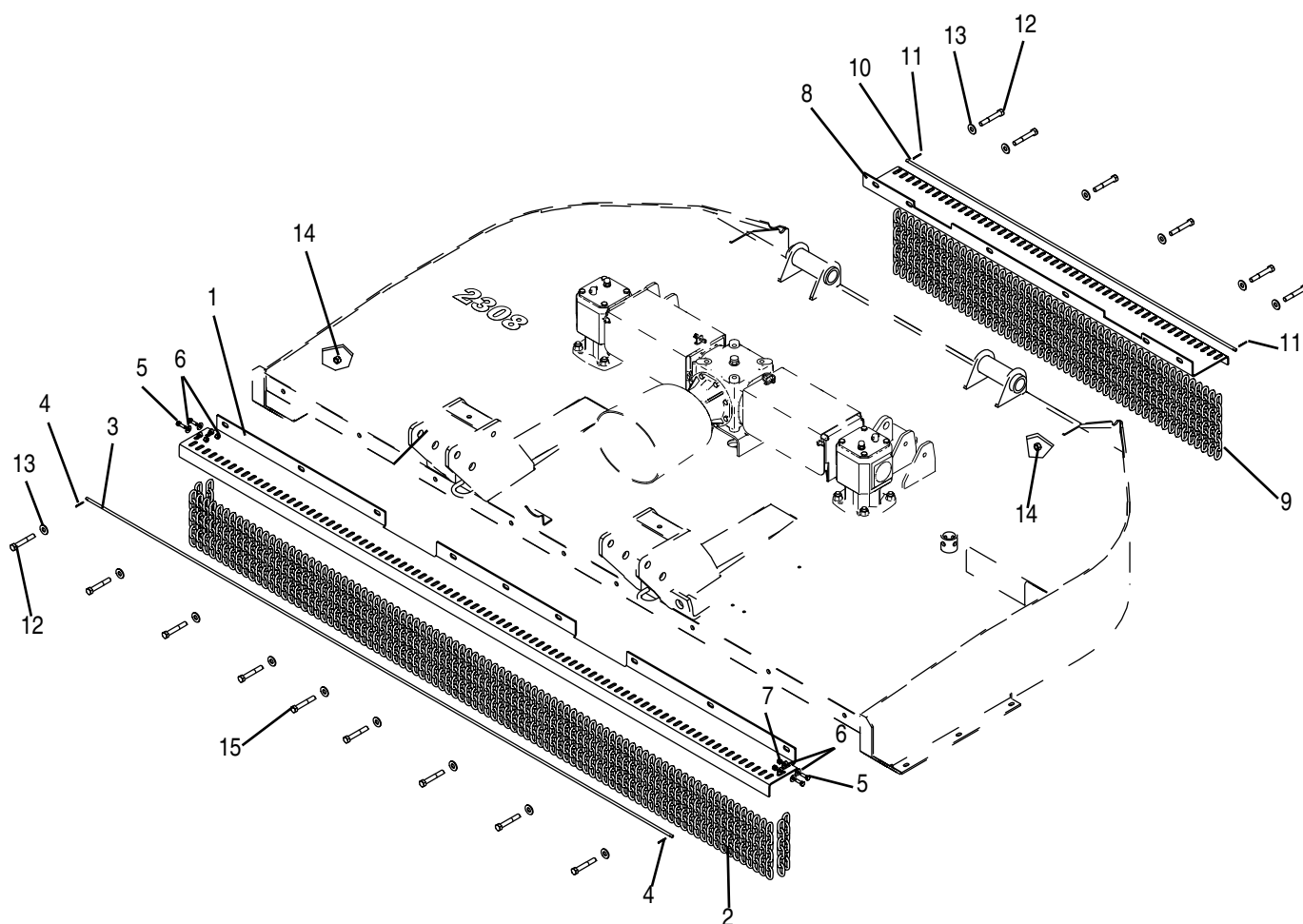
REAR METAL BAND For 2308 Models



REF. NO.	PART NO.	DESCRIPTION	QTY.
1	50075481	Rear Band	1
2	50075483	Rear Band Bracket, RH	1
3	50075484	Rear Band Bracket, LH	1
4	44094BH	Capscrew, 1/2" x 1-1/4" Gr. 5	10
5	9161600	Locknut, 1/2" Gr C	10
6	15916	Flatwasher, 1/2"	10

FRONT & REAR CHAIN ASSEMBLIES

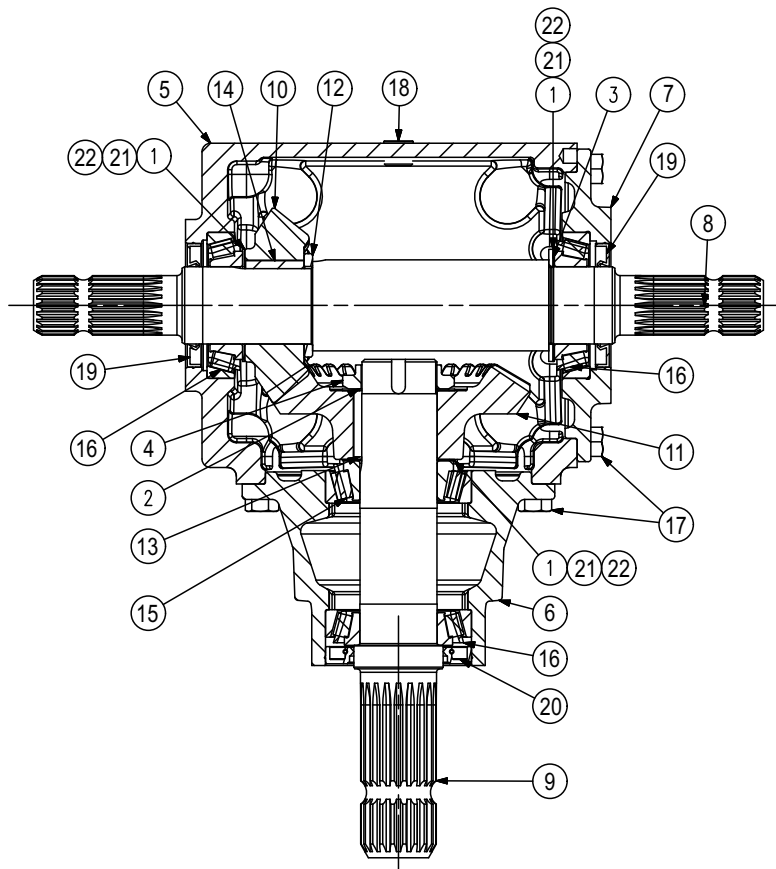
For 2308 Models



REF. NO.	PART NO.	DESCRIPTION	QTY.
	50075002	Front Chain Assy, Single Row	1
	50075417	Front Chain Assy, Double Row	1
1	50075000	Bracket, Front Chain	1
2	50017211	Chain, 6 Link (Single Row)	93
	50017213	Chain, 11 Link (Double Row)	93
3	50020265	Rod, Chains	1
4	50017210	Pin, Spiral .125 x 1.25	2
5	-----	Capscrew, 5/16" x 1" Gr. 5	4
6	15907BH	Flatwasher, 5/16"	8
7	9161000	Locknut, 5/16" Gr C	4
	50075006	Rear Chain Assy, Single Row	1
	50075420	Rear Chain Assy, Double Row	1
8	50075004	Bracket, Rear Chain	1
9	50017212	Chain, 7 Link (Single Row)	50
	82546	Chain, 13 Link (Double Row)	50
10	50020268	Rod, Chains	1
11	50017210	Pin, Spiral .125 x 1.25	2
12	-----	Capscrew, 1/2" x 3-1/4" Gr. 5	14
13	15916	Flatwasher, 1/2"	15
14	9161600	Locknut, 1/2" Gr C	15
15	-----	Capscrew, 1/2" x 3-3/4" Gr. 5	1

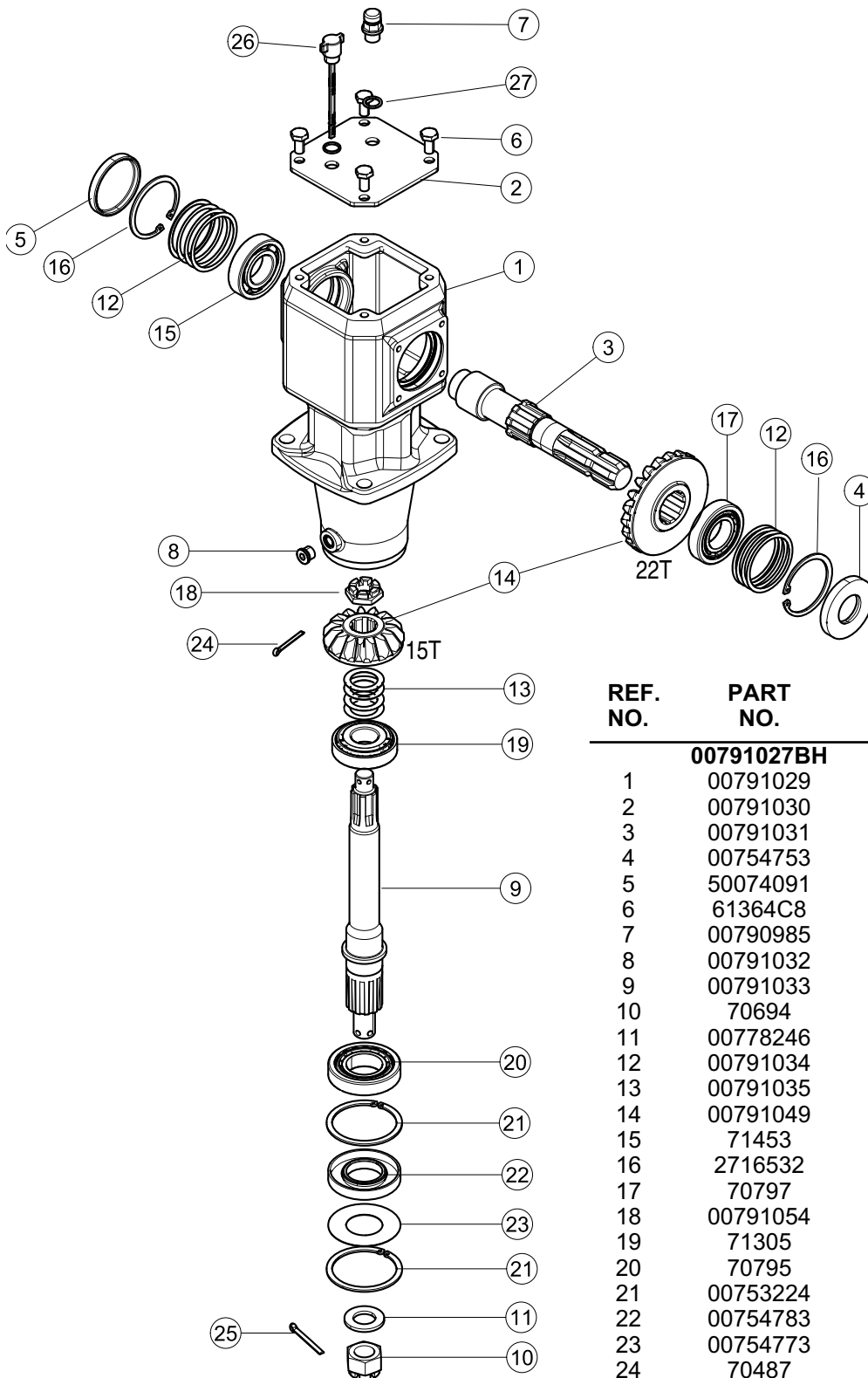
CENTER TRANSFER GEARBOX ASSY (1:1.5)

Mfg. by Comer
For 2308 Models

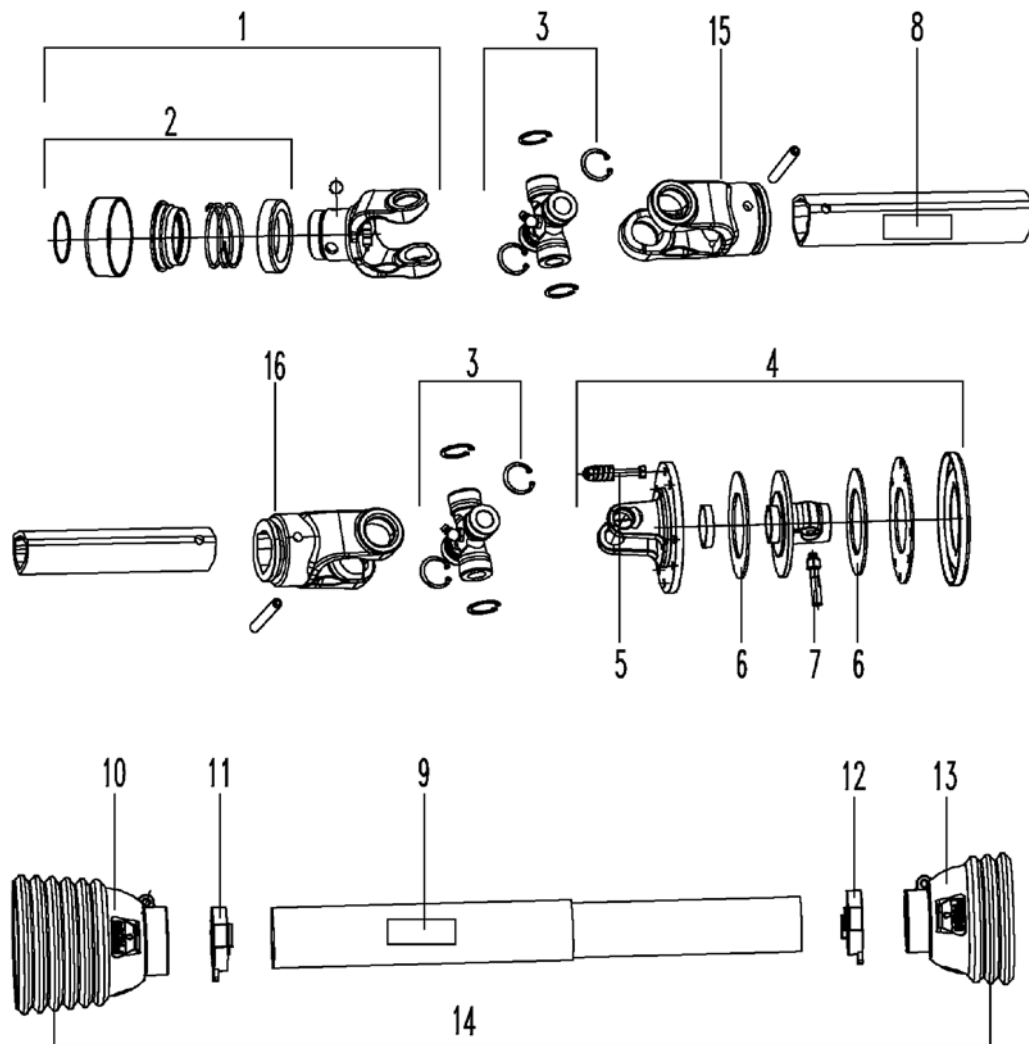


REF. NO.	PART NO.	DESCRIPTION	QTY.
	50075003	Transfer Gearbox Assembly	1
1	70348	Shim 45.3 x 65.3 x 0.3	3
2	70351	Shim 45.3 x 65.3 x 1.0	4
3	70740	Shim 45.3 x 65.3 x 2.5	1
4	70905	Locknut, M45 x 1.5	1
5	50076379	Housing	1
6	71542	Extension AC	1
7	50076380	Cover	1
8	71544	Shaft, 1-3/8" Z21	1
9	50076381	Shaft, 1-3/4" Z20	1
10	50076382	Pinion Forged Z18 M5.7	1
11	50076383	Crown Forged Z27 M5.7	1
12	50076384	Spacer 45.3 x 60.3 x 5	1
13	71549	Parallel Key 14 x 9 x 38.5	1
14	50076385	Parallel Key 14 x 9 x 34	1
15	71548	Bearing 32209	1
16	70796	Bearing 30209	3
17	44153BH	Hex Bolt, M10 x 22 UNI5739 8.8	16
18	70181	Plug, 3/8" Gas	4
19	71547	Double Lip Seal 45 x 72 x 8	2
20	50076386	Dust Lip Seal 52 x 85 x 10	1
21	70349BH	Shim 45.3 x 65.3 x 0.4	3
22	70350	Shim 45.3 x 65.3 x 0.5	3

OUTBOARD GEARBOX ASSEMBLY FOR 2308 MODELS



REF. NO.	PART NO.	DESCRIPTION	QTY.
	00791027BH	Gearbox Assembly	1
1	00791029	Housing, EZ40 Gearbox	1
2	00791030	Cap, EZ40 Gearbox	1
3	00791031	Shaft, Input EZ40 Gearbox	1
4	00754753	Seal, Oil 35x72x10	1
5	50074091	Site Windowl 72mm	1
6	61364C8	Capscrew, M10-1.5x16Gr.8.8	4
7	00790985	Plug, Vent M16-1.5	1
8	00791032	Plug, Hex Socket Hd M6	1
9	00791033	Shaft, Output EZ40 Gearbox	1
10	70694	Nut, Castle M24x2.0	1
11	00778246	Washer, Hardened M25x44x4	1
12	00791034	Shim Kit, Input EZ40	2
13	00791035	Shim Kit, Output EZ40	1
14	00791049	Gear Kit, (15T & 22T Gears)	1
15	71453	Bearing, Ball (35x72x17)	1
16	2716532	Snap Ring (72x75x2.5)	2
17	70797	Bearing, Roller (35x72x18.25)	1
18	00791054	Nut, Castle M20x1.5	1
19	71305	Bearing, Roller (30x72x20.75)	1
20	70795	Bearing, Roller (40x80x19.75)	1
21	00753224	Snap Ring	2
22	00754783	Seal, 40x80x12	1
23	00754773	Shield, Protective	1
24	70487	Cotter Pin M4x40	1
25	70497	Cotter Pin M5x50	1
26	4038609	Dipstick	1
27	00790983	Seal Washer	1

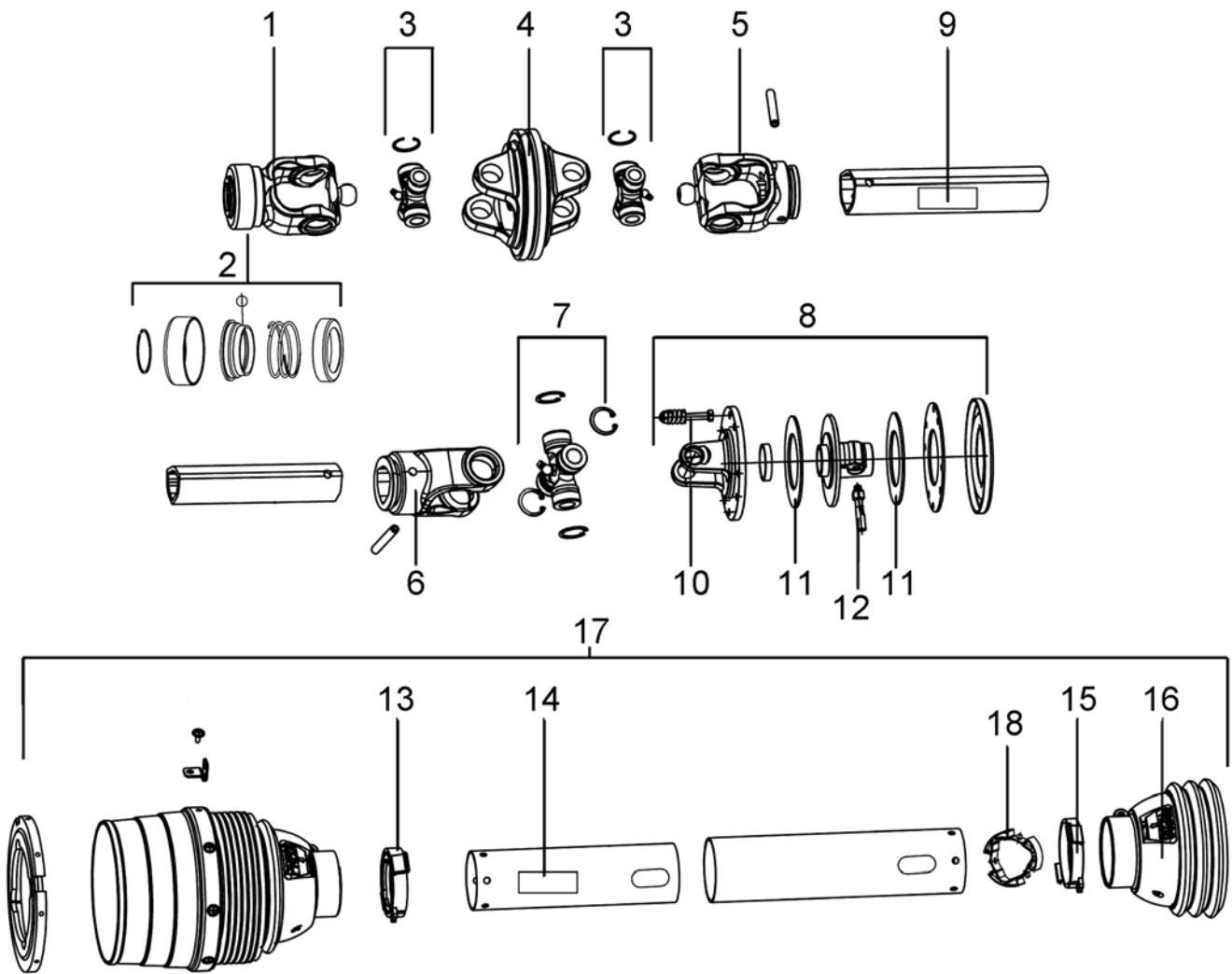


50076685 DRIVELINE ASSEMBLY 540 RPM
ASAE Size 4

For 2308 Lift and Semi Mount

REF. NO.	PART NO.	DESCRIPTION	QTY.
	50076685	Driveline Assembly	1
1	50076211	Complete Collar Yoke	1
2	50076212	Collar Kit	1
3	50076213	Cross Bearing Kit	2
4	50076214	Friction Clutch Assy	1
5	50074284	Spring and Bolt Kit	1
		Kit Contains: Bolts, Nuts, & Springs (8 ea)	
6	76083	Clutch Pad	2
7	50076217	Taper Pin Kit	1
8	78786	Safety Decal for Outer Shaft Tube	1
9	78608	Safety Decal for Outer Shield Tube	1
10	50081525	Outer Shield Cone	1
11	50076687	Outer Shield Bearing	1
12	50076688	Inner Shield Bearing	1
13	50081526	Inner Shield Cone	1
14	50076690	Shield Assembly, Complete	1
15	50081527	Tube Yoke, Outer	1
16	50081528	Tube Yoke, Inner	1

108-3-1

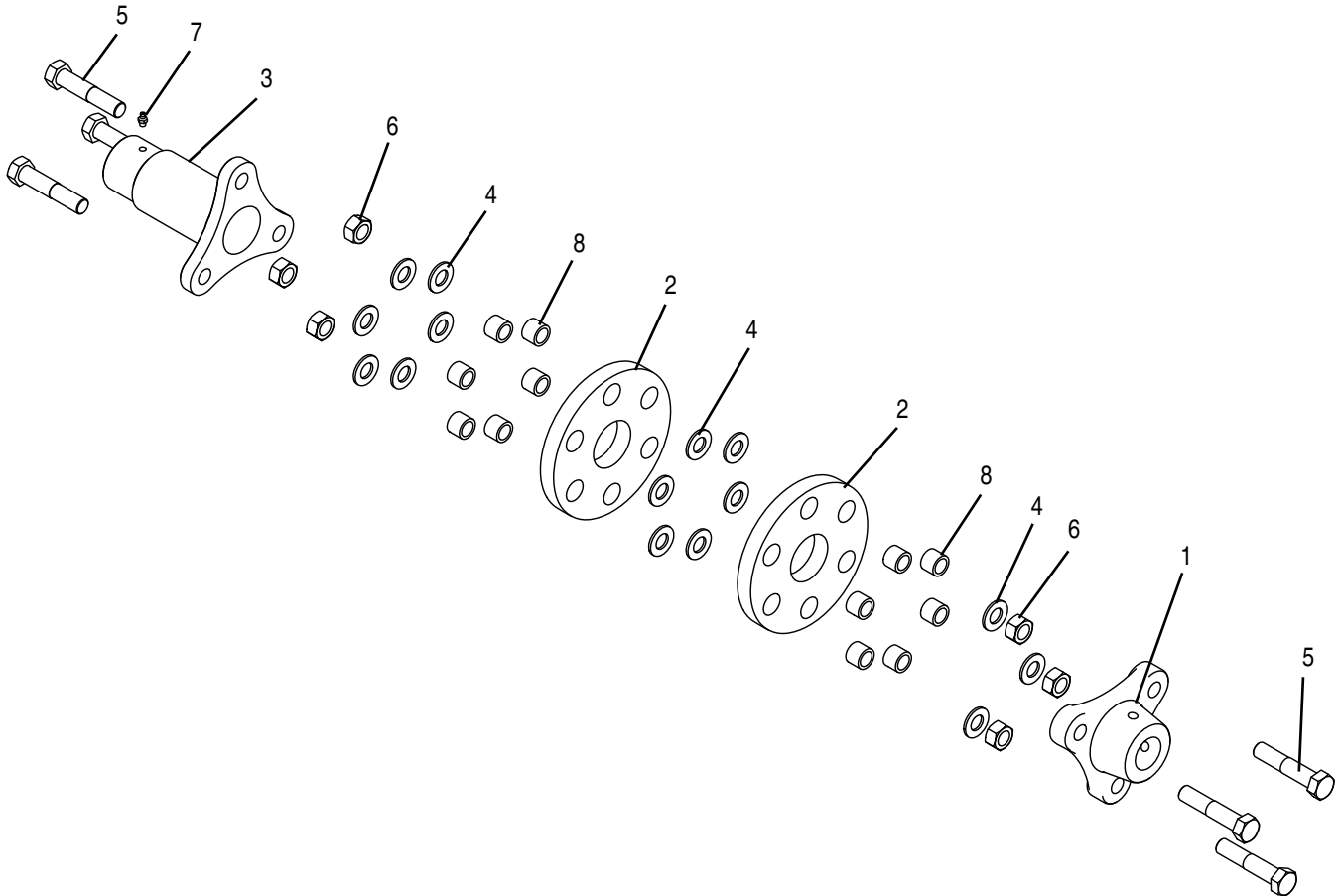


50076029 C.V. DRIVESHAFT ASSEMBLY WITH SLIP CLUTCH 540 RPM – 1-3/8" – 6 SPLINE

Used on 2308 Pull Models

REF. NO.	PART NO.	DESCRIPTION	QTY.
	50076029	Driveline Assembly	1
1	50076391	Complete Collar Yoke (540 RPM)	1
2	50076390	Collar Kit	1
3	50076389	Cross Bearing Kit (CV)	2
4	50076388	Wide Angle Central Part	1
5	50082981	CV Tube Yoke	1
6	50082982	Tube Yoke	1
7	50076213	Cross Kit	1
8	50076214	Friction Clutch	1
9	78786	Safety Label Inner	1
10	50074284	Spring & Bolt Kit	1
		Kit Contains: Bolts, Nuts, & Springs (8 each)	
11	76083	Clutch Pad	2
12	50076217	Taper Pin For Hub	1
13	50076397	Outer Shield Bearing	1
14	78608	Safety Label Outer	1
15	50076396	Inner Shield Bearing	1
16	50078298	CV Inner Shield Cone	1
17	50076392	Plastic Shield Assembly	1
18	50078299	Grease Ring	1

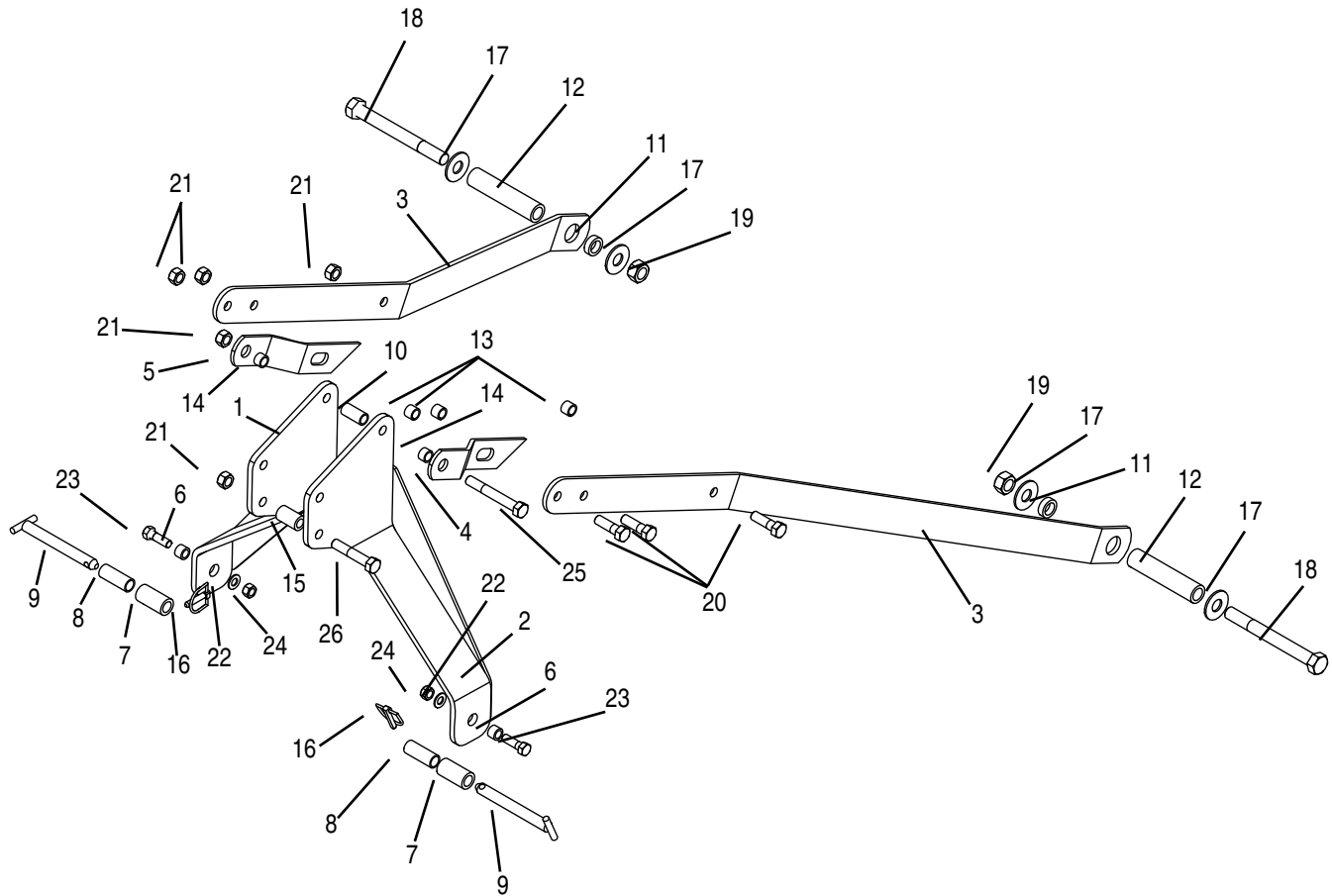
50075959 CROSS SHAFT ASSEMBLY
(ASSEMBLED LENGTH IS 11.69" END TO END)
Mfd By Changheng



REF. NO.	PART NO.	DESCRIPTION	QTY.
	50075959	Cross Shaft Driveline Assembly	1
1	50076095	Hub, 1-3/8" Z21	1
2	50076096	Rubber Pad	2
3	50076210	Shaft, 1-3/8" Z6	1
4	20748	Flatwasher, 5/8" SAE	15
5	44439	Capscrew, M16 x 2 x 80 Gr. 8.8	6
6	44406BH	Locknut, M16 x 2.0	6
7	50070289	Fitting, Grease, M8 x 1.25	1
8	50076094	Bushing	12

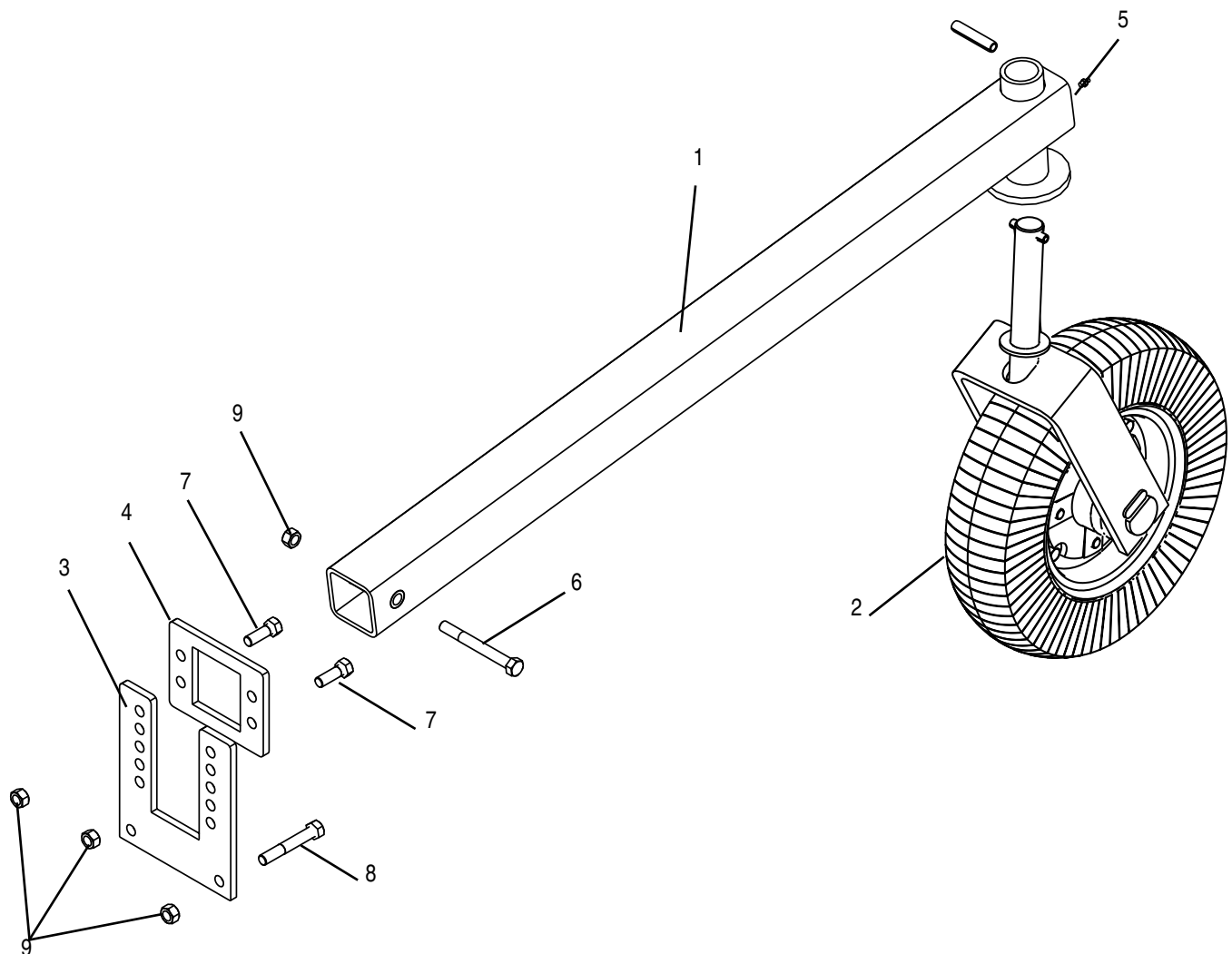
LIFT & SEMI-MOUNT HITCH

Models 2308



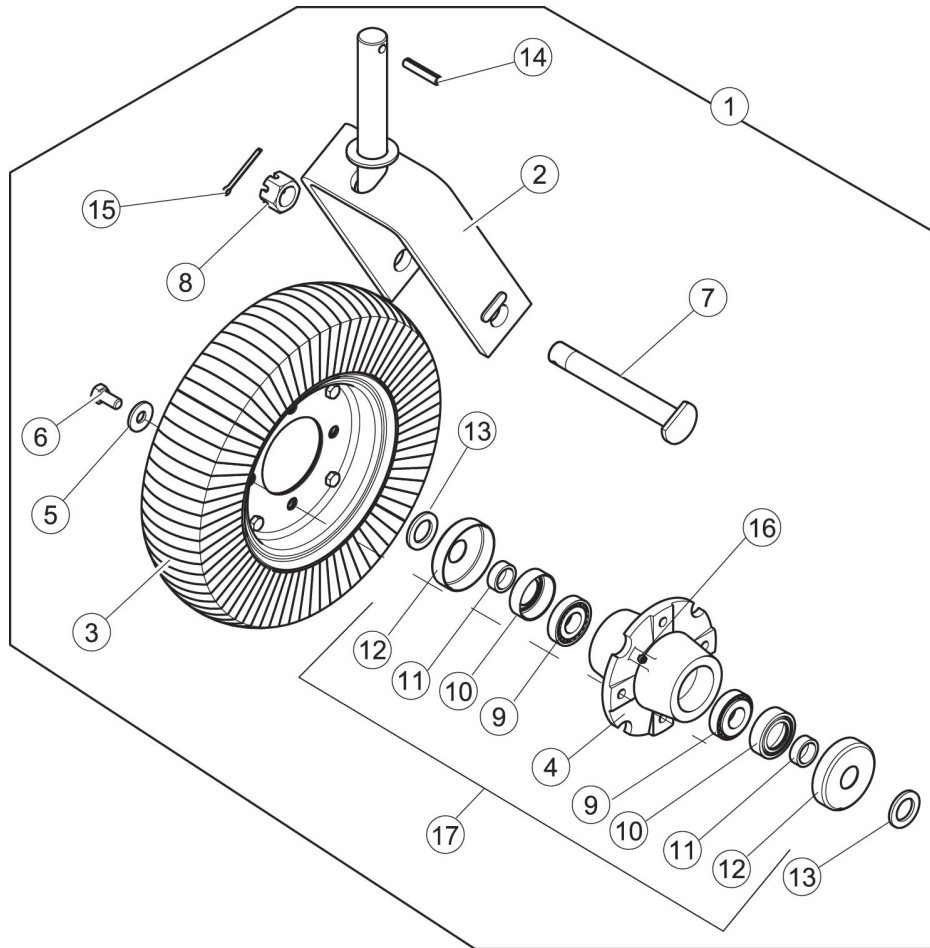
REF. NO.	PART NO.	DESCRIPTION	QTY.	REF. NO.	PART NO.	DESCRIPTION	QTY.
1	50076001	A-Frame Weldment, RH	1	14	50050392	Bushing, Spacer	2
2	50076002	A-Frame Weldment, LH	1	15	50033665	Bushing, Quick Hitch Top, Cat 1	1
3	50075995	Yoke, 2308	2	16	20558BH	Pin, Lynch	2
4	50050416	Pivot Arm Half, LH	1	17	15908BH	Flatwasher, 1"	4
5	50050417	Pivot Arm Half, RH	1	18	20100	Capscrew, 1" x 9-1/2" Gr. 5	2
6	50050555	Bushing, Strut Weldment	2	19	9163200	Locknut, 1" Gr C	2
7	91061	Spacer	2	20	1162424	Capscrew, 3/4" x 2-1/2" Gr. 5	3
8	91062	Spacer, Cat 2 Std	2	21	9162400	Locknut, 3/4" Gr C	5
9	50080166	Hitch Pin, 7/8" x 7.00"	2	22	20748	Flatwasher, 5/8" SAE	2
10	82000	Spacer, Mast	1	23	20947	Capscrew, 5/8" x 2" Gr. 5	2
11	69528	Bushing, Mast Link	2	24	15598BH	Locknut, 5/8"	2
12	91507	Bushing, Strongback	2	25	19037	Capscrew, 3/4" x 5-1/2" Gr. 5	1
13	50050393	Bushing, Wear	3	26	44189	Capscrew, 3/4" x 4" Gr. 5	1

REGULAR AXLE BUNDLE For Lift & Semi-Mount Models 2308



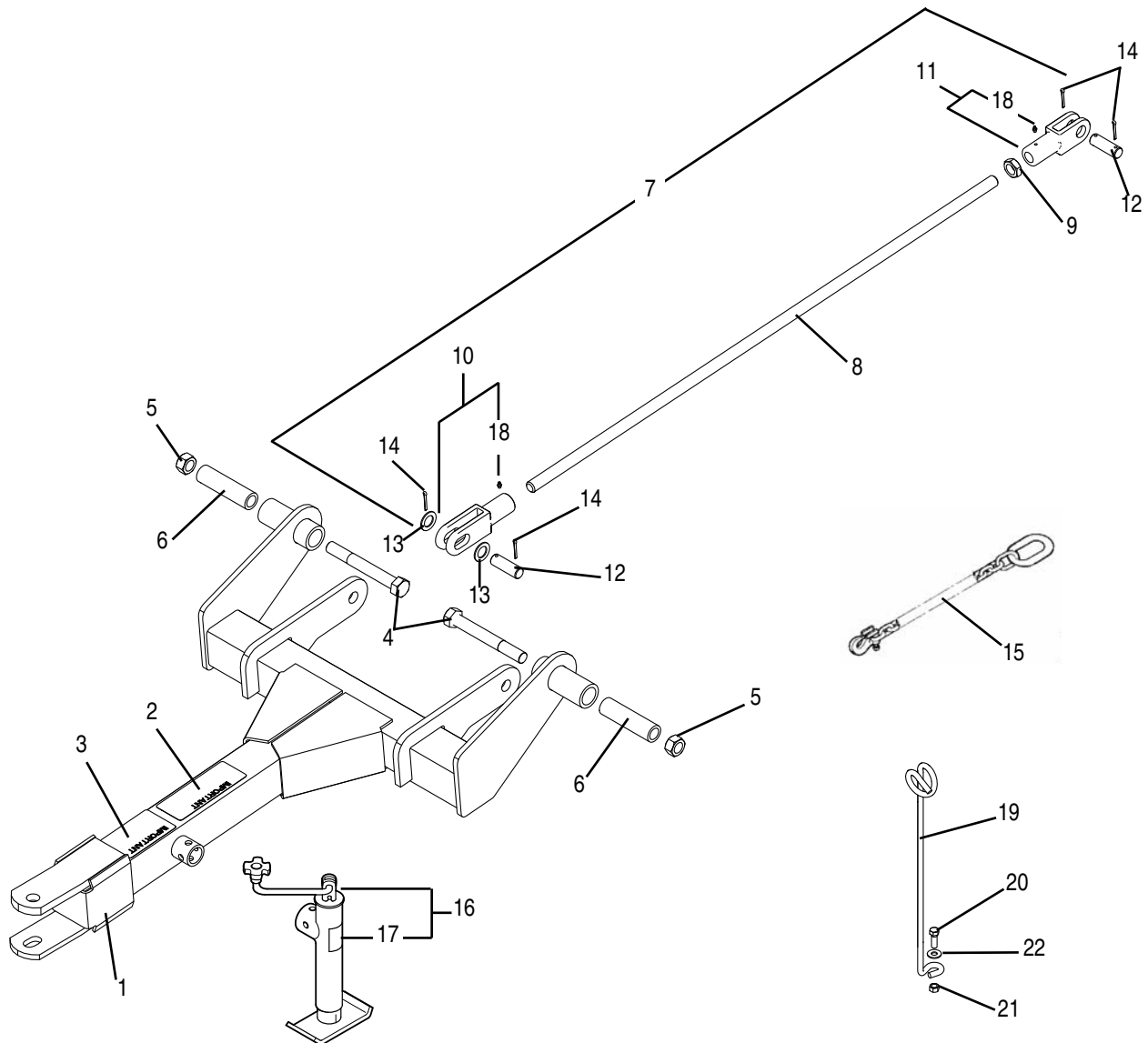
REF. NO.	PART NO.	DESCRIPTION	QTY.
1	50064527	Axle Weldment	1
2	50068496SP	Caster Ass'y Laminated Tire w/Bearings	1
3	92939	Bracket, Adjusting Axle	1
4	92940	Collar, Adjusting Axle	1
5	449BH	Grease Fitting	1
6	20175	Capscrew, 1/2" x 4-1/2" Gr. 5	1
7	15093	Capscrew, 1/2" x 1-1/2" Gr. 5	2
8	1161632	Capscrew, 1/2" x 3-1/4" Gr. 5	2
9	9161600	Locknut, 1/2: Gr C	5

CASTER ASSEMBLY WITH LAMINATED TIRE



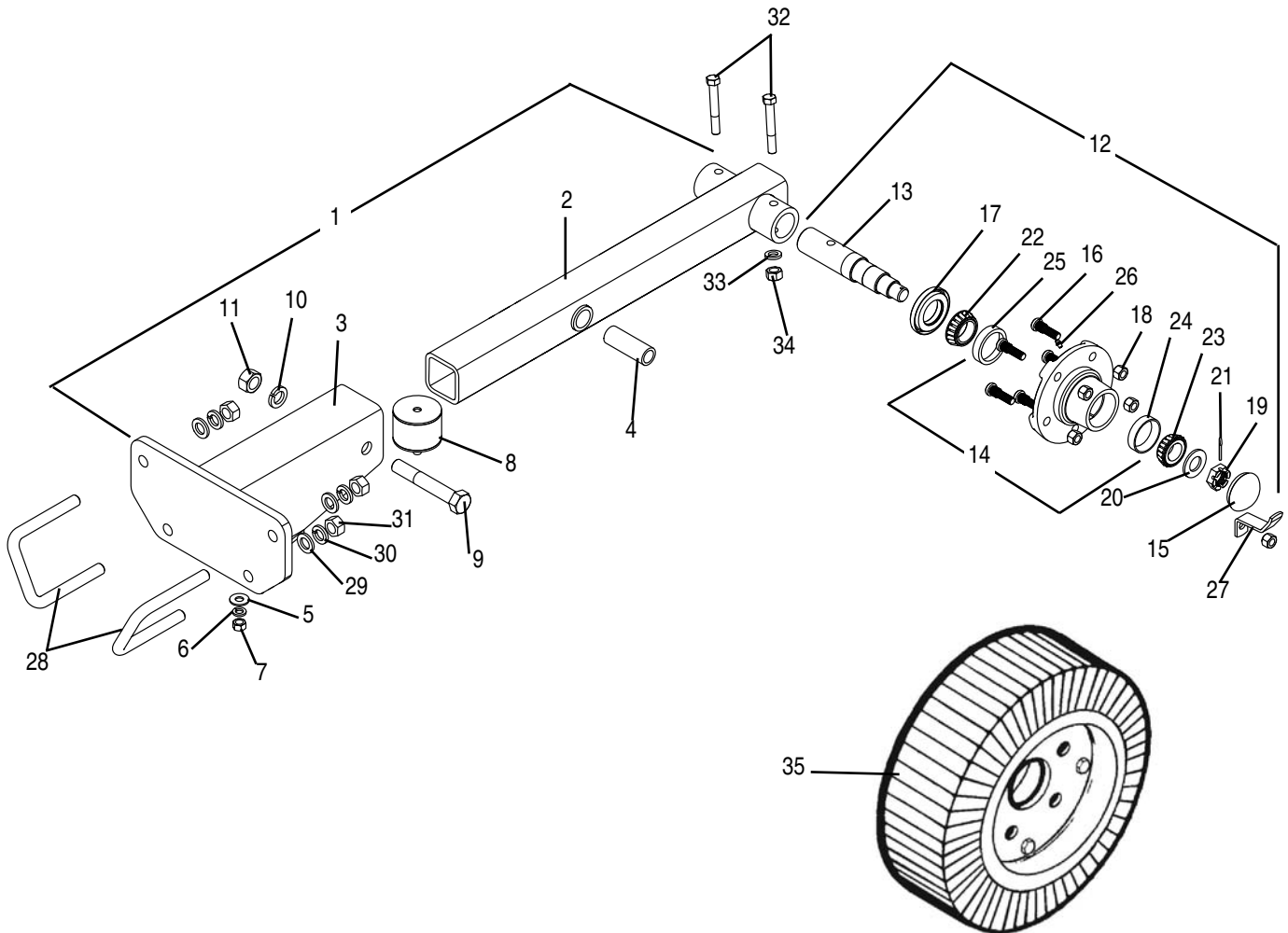
REF. NO.	PART NO.	DESCRIPTION	QTY.
1	50068496SP	Tailwheel Assy.	1
2	50067492	Caster Fork Weld.	1
3	500BH	Solid Tire Assy.	1
4	50068522	Hub Casting	1
5	44269	Flatwasher M12	4
6	44204BH	Capscrew M12 x 1.75 x 25 Gr8.8	4
7	50067488	Axle Bolt	1
8	120BH	Slotted Nut M24 x 2	1
9	50068521	Bearing Assy.	2
10	50068525	Seal	2
11	50068523	Bushing	2
12	50068520	Protective Cap	1
13	50068524	Washer	2
14	50067495	Roll Pin m10 x 50	2
15	20167	Cotter Pin 3/16" x 2"	1
16	449BH	Grease Fitting	1
17	50083917	Tailwheel Hub Assy., Rebuild Kit	1 (items 4, 9-12)

PULL BUNDLE Model 2308

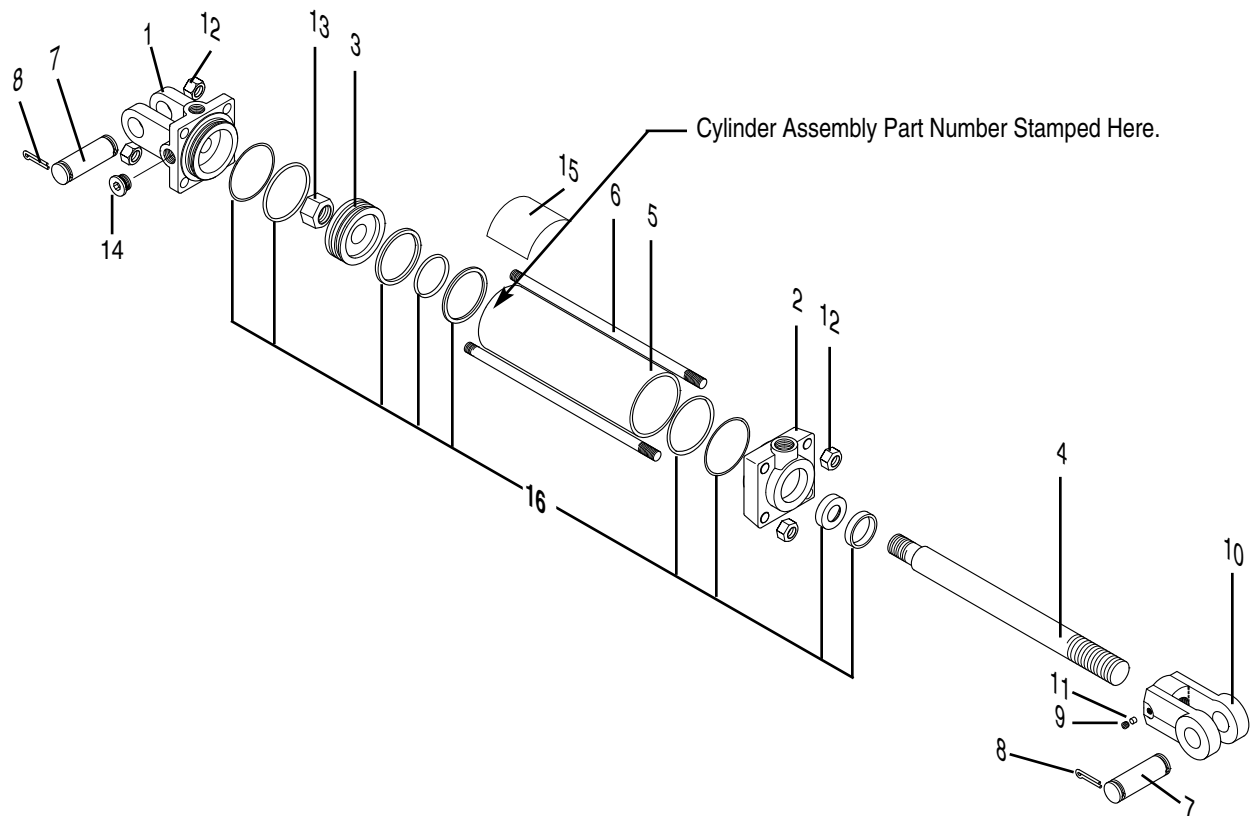


REF. NO.	PART NO.	DESCRIPTION	QTY.	REF. NO.	PART NO.	DESCRIPTION	QTY.
1	50075428	Tongue Assembly w/Decals	1	12	92314	Pin, Swivel Link	2
2	87340	Decal, Important	1	13	20376	Flatwasher, 1" SAE	2
3	87317	Decal, Drawbar	1	14	21020614	Cotter Pin, 3/16" x 1-1/2"	4
4	20503	Capscrew, 1" x 8" Gr. 5	2	15	91074	Safety Tow Chain	1
5	9163200	Locknut, 1"	2	16	24D25128	Jackstand Assembly	1
6	50075411	Bushing, Tongue	2	17	D767	Decal, Warning	1
7	50074954	Leveling Rod Assembly	1	18	449BH	Grease Fitting	2
8	50074953	Leveling Rod	1	19	12031	Hose Holder Rod	1
9	15612	Jamnut, 1"	1	20	15093	Capscrew, 1/2" x 1-1/2" Gr. 5	1
10	87510	Clevis Assembly	1	21	15554	Locknut, 1/2"	1
11	92309	Clevis Assembly, L.H.	1	22	15916	Flatwasher, 1/2"	1

AXLE ARM ASSEMBLY SINGLE SPINDLE For 2308 Pull Models



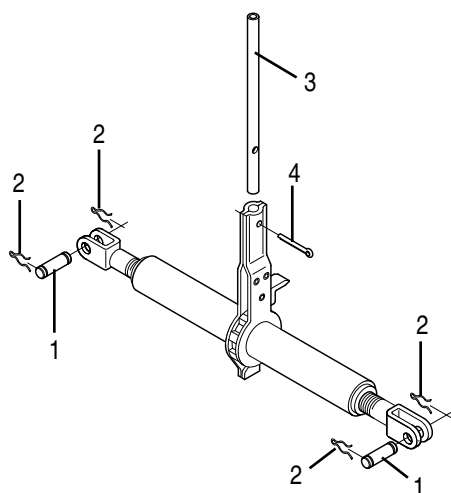
REF. NO.	PART NO.	DESCRIPTION	QTY.	REF. NO.	PART NO.	DESCRIPTION	QTY.
1	50074950	Axle Arm Sub-Ass'y (Incl. Items 2-11)	1	19	00756490	Bearing, Adjustment Nut, 1-14 UNS	1
2	50074952	Axle Arm Weldment	1	20	00756493	Flatwasher, 1"	1
3	50075008	Axle Mount Weldment	1	21	00026200	Cotter Pin, 5/32" x 1-1/2"	1
4	88272	Pivot Bushing	1	22	00750434	Bearing Cone, LM29749-1-1/2" Bore	1
5	15916	Flatwasher, 1/2"	1	23	0371242102	Bearing Cone, 15123-1-1/4" Bore	1
6	15806	Lockwasher, 1/2"	1	24	00756576	Bearing Cup, 15245	1
7	8151600	Hex Nut, 1/2"	1	25	24-6-201	Bearing Cup, LM29710	1
8	91042	Sandwich Mount	1	26	00003500	Grease Fitting, 1/8" MP Straight	1
9	20272BH	Capscrew, 7/8" x 5-1/2" Gr. 5	1	27	00779455	Hub Cap Retainer	1
10	15824	Lockwasher, 7/8"	1	28	25D25593	U-Bolt	2
11	44149BH	Locknut, 7/8" Gr C	1	29	15921	Flatwasher, 3/4" SAE	4
12	50073432	Hub & Spindle Assy, short	1	30	146	Lockwasher, 3/4"	4
13	50073436	Spindle, Short	1	31	19517	Hex Nut, 3/4"	4
14	00779456	Wheel Hub Casting w/ Studs, Cups & Grease Fitt.	1	32	20779	Capscrew, 1/2" x 3-1/2" Gr. 5	2
15	00756492	Cap, Dust	1	33	15806	Lockwasher, 1/2"	2
16	13198	Stud Bolt, 1/2"-20 UNF	5	34	15554	Locknut, 1/2"	2
17	00778108	Seal Kit	1	35	294SP	Solid Laminated Tire Assy.	2
18	00750614	Wheel Nut, 1/2"-20 UNF	5				



99565 HYDRAULIC CYLINDER (AXLE ADJUSTING)

Mfd. by Monarch
 3.5" Bore x 8" Stroke 1.25 Rod Dia.
 3/4" - 16 ORB Ports
 Used on 2308 Pull

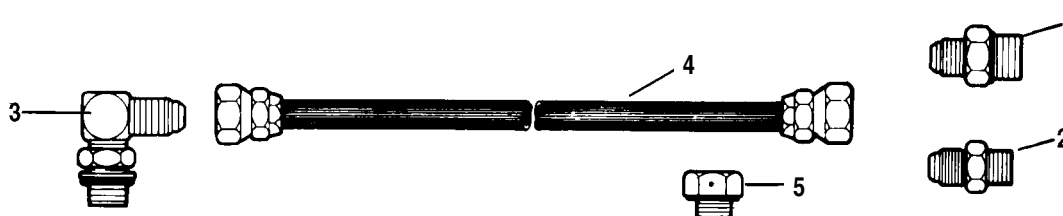
REF. NO.	PART NO.	DESCRIPTION	QTY.
	99565	Hydraulic Cylinder Assy	1
1	95429	Clevis Cap	1
2	95430	Rod Cap	1
3	50017628	Piston	1
4	95431	Rod, 1.25" Dia.	1
5	95426	Cylinder Tube	1
6	95427	Tie Rod	4
7	95425	Pin, 1" Dia.	2
8	21020614	Cotter Pin, 3/16" x 1-1/2"	4
9	95433	Thread Lock	1
10	95428	Rod Clevis, 1.25" x 1"	1
11	95422	Set Screw, 3/8" x 1/2" Knurled	1
12	95420	Hex Nut, 5/8" UNF	8
13	-----	Hex Nut, 1"-14	1
14	95435	Plug, 3/4"	1
15	50042072	Caution Decal	1
16	50017623	Seal Kit	1



1817SP RATCHET ASSEMBLY 2308 Pull

REF. NO.	PART NO.	DESCRIPTION	QTY.
	1817SP	Ratchet Assy	1
1	50028265	Pin	2
2	50028264	Clip Pin	4
3	11810	Handle	1
4	15474	Cotter Pin	1

HYDRAULIC HOSES & FITTINGS 2308 Pull

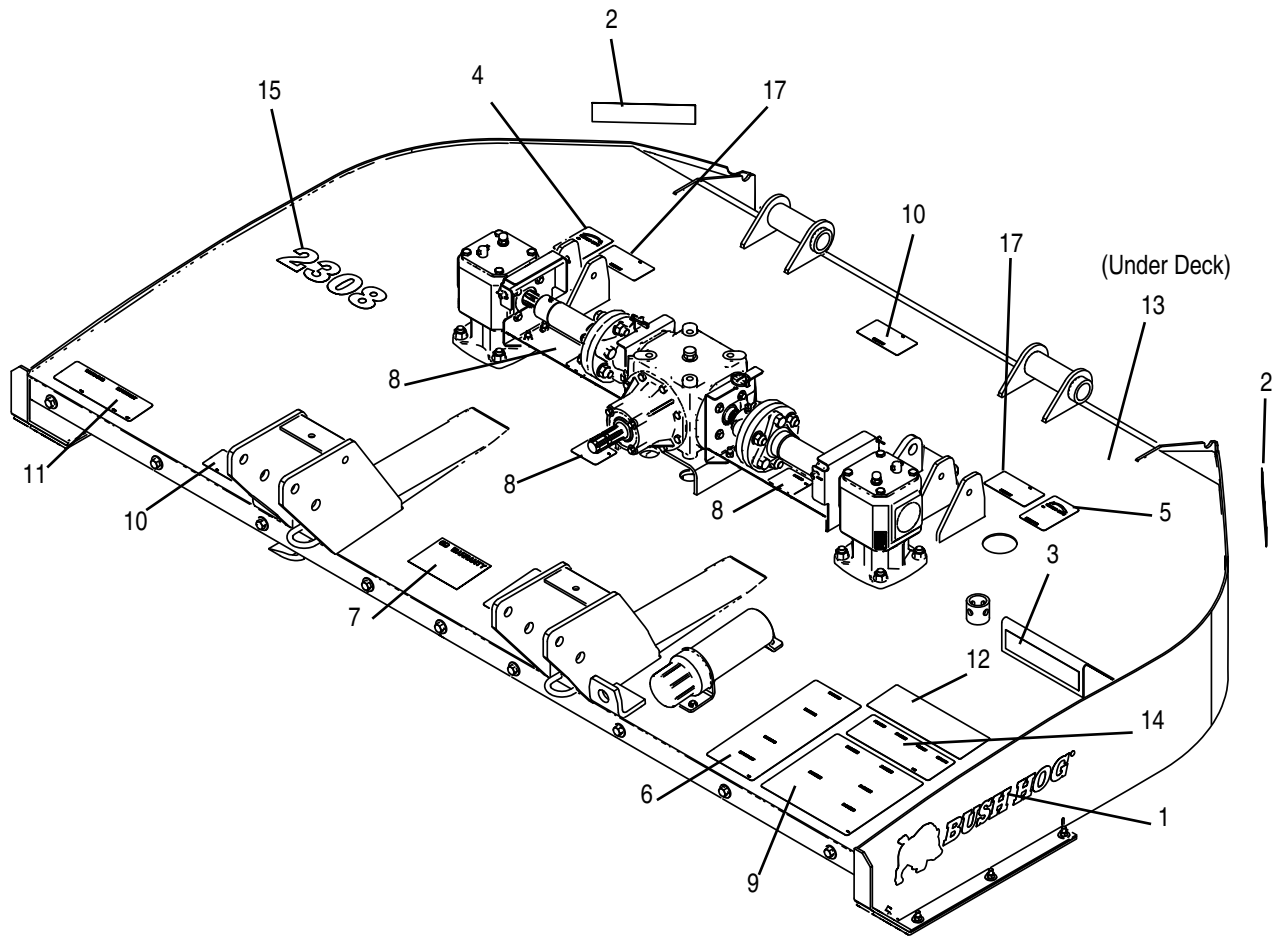


For Axle Cylinder

REF. NO.	PART NO.	DESCRIPTION	QTY.
1	53340BH	Adaptor 9/16" JIC to 3/4" SAE	1
2	24-6-434	Adaptor 9/16" JIC to 1/2" NPT	1
3	14-40-98	90° Elbow 3/4" ORB to 9/16" JIC	1
4	62427	Hydraulic Hose 144"	1
5	86500	Breather Plug	1

63451 STOP COLLAR KIT For Axle Cylinder 2308 Pull



DECAL KIT

REF. NO.	PART NO.	DESCRIPTION	QTY.
	50076011	Decal Kit	1
1	50061049	Decal, Bush Hog	2
2	50031214	Reflector, Red	2
3	50031212	Reflector, Amber	1
4	D552	Decal, Blade Rotation, CW	1
5	D551	Decal, Blade Rotation, CCW	1
6	D553	Decal, Danger (Hyd. Oil & Towing)	1
7	D547	Decal, Danger (Driveline Entanglement)	1
8	D546	Decal, Danger (Guard Missing)	3
9	D549	Decal, Danger/Operation	1
10	D614	Decal, Danger (Thrown Object Hazard)	2
11	D559	Decal, Genuine Bush Hog Parts	1
12	D581	Decal, Lubrication Chart (Multi-Spindle)	1
13	D454	Decal, Warning (Crushing Hazard)	1
14	D813	Decal, Danger - Multilingual	1
15	50074956	Decal, Model - 3308	1
16	87340	Decal, Important (Not Shown)	1
17	D608	Decal, Warning, Blade Timing	2



2501 Griffin Ave. • Selma, AL 36703
www.bushhog.com