

BUSH HOG®

2400 SERIES

POST HOLE DIGGER

Revised 04/23

PARTS MANUAL

SECTION 2A



BUSH HOG®

2501 Griffin Ave.
Selma, AL 36703
Parts Ordering 1-800-304-2836
www.bushhog.com

ATENCIÓN!

Si No Lee Ingles, Pida Ayuda a Alguien
Que Si Lo Lea Para Que le Traduzca las
Medidas de Seguridad.

LEA EL INSTRUCTIVO



© 2013 Alamo Group Inc.

A MEMBER OF THE
ALAMO GROUP
ALWAYS ON THE CUTTING EDGE®

PARTS ORDERING GUIDE

The following instructions are offered to help eliminate needless delay and error in processing purchase orders for the equipment in this section.

1. The Parts Section is prepared in logical sequence and grouping of parts that belong to the basic machine featured in this manual. Part Numbers and Descriptions are given to help locate the parts and quantities required.
2. The Purchase Order must include the name and address of the person or organization ordering the parts, who should be charged, and if possible, the serial number of the machine for which the parts are ordered.
3. The Purchase Order must clearly list the quantity of each part, the complete and correct part number (be sure to include all periods), and the basic name of the part.
4. The Manufacturer reserves the right to substitute parts where applicable.
5. Some parts are unlisted items which are special production items not normally stocked and are subject to special handling. Request a quotation for such parts before sending a Purchase Order.
6. The Manufacturer reserves the right to change prices without prior notice.



For maximum safety and to guarantee optimum product reliability, always use genuine BUSH HOG Parts. The use of inferior replacement parts may cause premature or catastrophic failure which could result in serious injury or death. Direct any questions regarding parts to:

BUSH HOG
2501 Griffin Ave.
Selma, AL 36703
www.bushhog.com
Contact Us
800-304-2836



BUSH HOG®

To the Owner/Operator/Dealer

All implements with moving parts are potentially hazardous. There is no substitute for a cautious, safe-minded operator who recognizes the potential hazards and follows reasonable safety practices. The manufacturer has designed this implement to be used with all its safety equipment properly attached to minimize the chance of accidents.

BEFORE YOU START! Read the safety messages on the implement and shown in your manual. Observe the rules of safety and common sense!

DANGER

FAILING TO FOLLOW SAFETY MESSAGES AND OPERATING INSTRUCTION CAN CAUSE SERIOUS BODILY INJURY OR EVEN DEATH TO OPERATOR AND OTHERS IN THE AREA.

<p>1. </p>	<p>2. NO RIDERS. NO CHILDREN OPERATORS </p>	<p>3. USE SAFETY SHOES, HARD HAT, SAFETY GLASSES, SEAT BELTS, ROPS & OPS. </p>	<p>4. BLOCK UP SECURELY BEFORE WORKING UNDER. </p>
---	--	--	---

1. Study and understand Operator's Manuals, Safety Decals, and Instructional Decals for tractor and implement to prevent misuse, abuse, and accidents. Practice before operating in a confined area or near passersby.
• Learn how to stop engine suddenly in an emergency. Be alert for passersby and especially children.

2. Allow no children on or near folding mower or tractor. Allow no riders on tractor or implement. Falling off may cause serious injury or death from being run over by tractor or mower or contact with rotating blades.

3. Operate only with tractor having Roll-Over Protective Structure (ROPS) and with seat belt securely fastened to prevent injury and possible death from falling off or tractor overturn.
• Personal Protective Equipment such as Hard Hat, Safety Glasses, Safety Shoes, & Ear Plugs are recommended.

4. Block up or support raised machine and all lifted components securely before putting hands or feet under or working underneath any lifted component to prevent crushing injury or death from sudden dropping or inadvertent operation of controls. Make certain area is clear before lowering or folding.

5. Before transporting, put Lift Lever in detent or full-lift position. Install Transport Safety Devices securely on folding mowers. Put Booms securely in Transport Rest.
• Folding and Boom Mowers have raised center of gravity. Slow down when turning and on hillsides.

6. Make certain that SMV sign, warning lights, and reflectors are clearly visible. Follow local traffic codes.

7. Never operate with Cutting Head or Folding Section raised if passersby, bystanders, or traffic are in the area to reduce possibility of injury or death from objects thrown by Blades under Guards or mower structure.

8. Before dismounting, secure implement in transport position or lower to ground.
• Put tractor in park position or set brake, disengage PTO, stop engine, remove key, and wait until noise of rotation has ceased to prevent crushing by entanglement in rotating parts which could cause injury or death.
• Never mount or dismount a moving vehicle. Crushing from runover may cause serious injury or death.

<p>5. TRANSPORT SAFELY, LOCK UP. </p>	<p>6. USE SMV, LIGHTS, & REFLECTORS. </p>	<p>7. DO NOT OPERATE WITH CUTTER OR WING RAISED </p>	<p>8. DO NOT MOUNT OR DISMOUNT WHILE MOVING. </p>
--	--	--	--

02967827



WARNING

Cancer and Reproductive Harm

www.P65Warnings.ca.gov

WARRANTY INFORMATION:

Read and understand the complete Warranty Statement found in this Manual. Fill out the Warranty Registration Form in full and return it to within 30 Days. Make certain the Serial Number of the Machine is recorded on the Warranty Card and on the Warranty Form that you retain.

LIMITED WARRANTY



Bush Hog warrants to the original purchaser of any new Bush Hog equipment, purchased from an authorized Bush Hog dealer, that the equipment be free from defects in material and workmanship for a period of one (1) year for non-commercial, state and municipalities' use and ninety (90) days for commercial use from date of retail sale. The obligation of Bush Hog to the purchaser under this warranty is limited to the repair or replacement of defective parts.

Replacement or repair parts installed in the equipment covered by this limited warranty are warranted for ninety (90) days from the date of purchase of such part or to the expiration of the applicable new equipment warranty period, whichever occurs later. Warranted parts shall be provided at no cost to the user at an authorized Bush Hog dealer during regular working hours. Bush Hog reserves the right to inspect any equipment or parts which are claimed to have been defective in material or workmanship.

DISCLAIMER OF IMPLIED WARRANTIES & CONSEQUENTIAL DAMAGES

Bush Hog's obligation under this limited warranty, to the extent allowed by law, is in lieu of all warranties, implied or expressed, **INCLUDING IMPLIED WARRANTIES OF MERCHANTABILITY AND FITNESS FOR A PARTICULAR PURPOSE** and any liability for incidental and consequential damages with respect to the sale or use of the items warranted. Such incidental and consequential damages shall include but not be limited to: transportation charges other than normal freight charges; cost of installation other than cost approved by Bush Hog; duty; taxes; charges for normal service or adjustment; loss of crops or any other loss of income; rental of substitute equipment, expenses due to loss, damage, detention or delay in the delivery of equipment or parts resulting from acts beyond the control of Bush Hog.

THIS LIMITED WARRANTY SHALL NOT APPLY:

1. To vendor items which carry their own warranties, such as engines, tires, and tubes.
2. If the unit has been subjected to misapplication, abuse, misuse, negligence, fire or other accident.
3. If parts not made or supplied by Bush Hog have been used in connection with the unit, if, in the sole judgement of Bush Hog such use affects its performance, stability or reliability.
4. If the unit has been altered or repaired outside of an authorized Bush Hog dealership in a manner which, in the sole judgement of Bush Hog, affects its performance, stability or reliability.
5. To normal maintenance service and normal replacement items such as gearbox lubricant, hydraulic fluid, worn blades, or to normal deterioration of such things as belts and exterior finish due to use or exposure.
6. To expendable or wear items such as teeth, chains, sprockets, belts, springs and any other items that in the company's sole judgement is a wear item.

NO EMPLOYEE OR REPRESENTATIVE OF BUSH HOG IS AUTHORIZED TO CHANGE THIS LIMITED WARRANTY IN ANY WAY OR GRANT ANY OTHER WARRANTY UNLESS SUCH CHANGE IS MADE IN WRITING AND SIGNED BY BUSH HOG'S SERVICE MANAGER, 2501 GRIFFIN AVE., SELMA, ALABAMA 36703.



Record the model number, serial number and date purchased. This information will be helpful to your dealer if parts or service are required.

MODEL NUMBER _____

SERIAL NUMBER _____

DATE OF RETAIL SALE _____

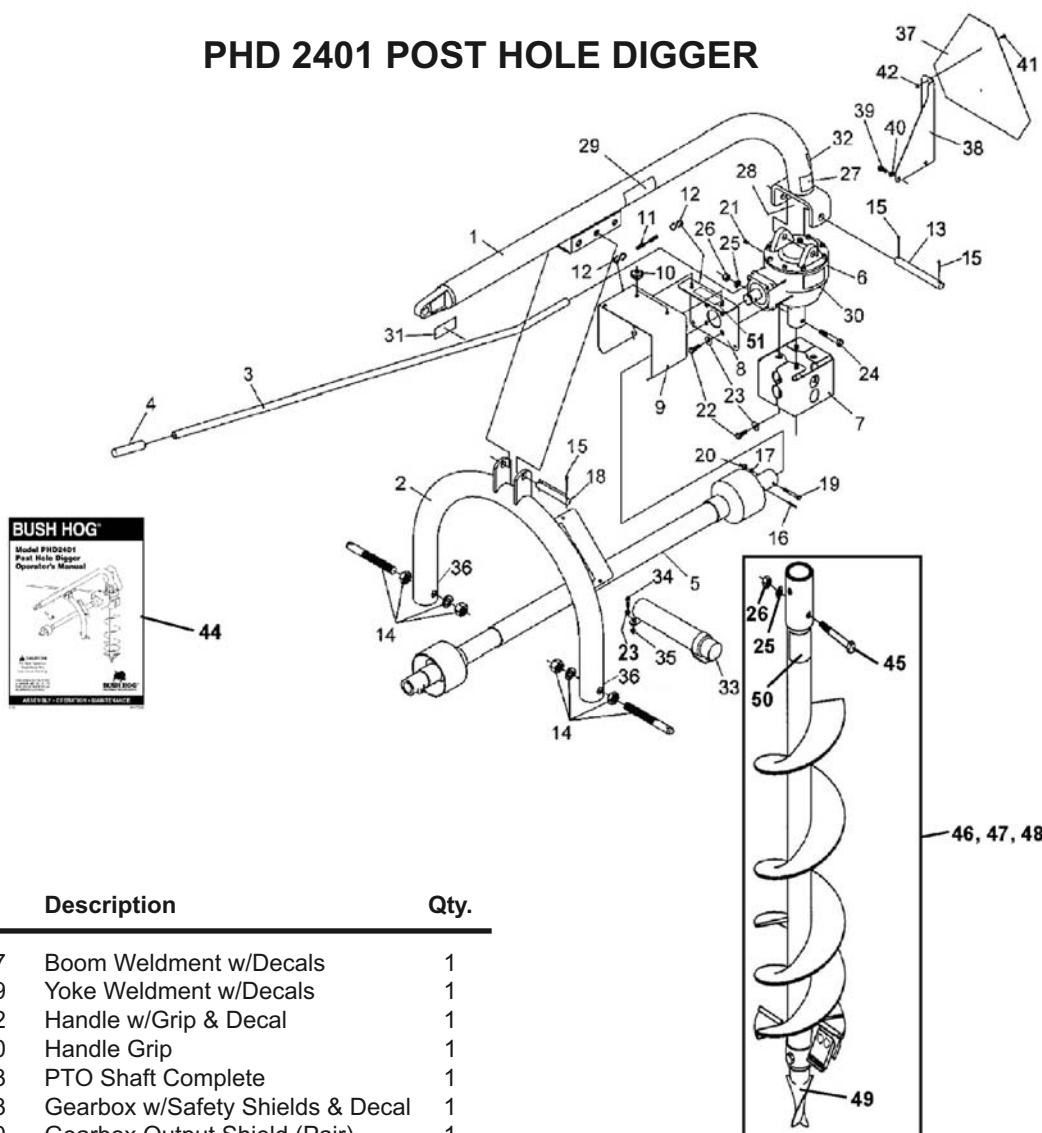
MAKE CERTAIN THE WARRANTY
HAS BEEN FILED WITH BUSH HOG
SELMA, ALABAMA

PHD 2401, PHD 2402 & PHD 2403
POST HOLE DIGGER

ALPHABETICAL INDEX

CONTENTS	PAGE
PHD 2401 Boom, Yoke, Gearbox and Related Parts	2A-1-1
PHD 2402 Boom, Yoke, Gearbox and Related Parts	2A-1-2
PHD 2403 Boom, Yoke, Gearbox and Related Parts	2A-1-3
Auger Points and Parts	2A-2-1, 2A-2-2
Down Force Kits	2A-5-1 thru 2A-5-3
Extensions	2A-2-2, 2A-2-3
Gearbox Assemblies	2A-4-1 thru 2A-4-3
Parking Stand Kits	2A-6-1, 2A-6-2
PTO Shafts	2A-3-1, 2A-3-2
Safety Decals	2A-7-1

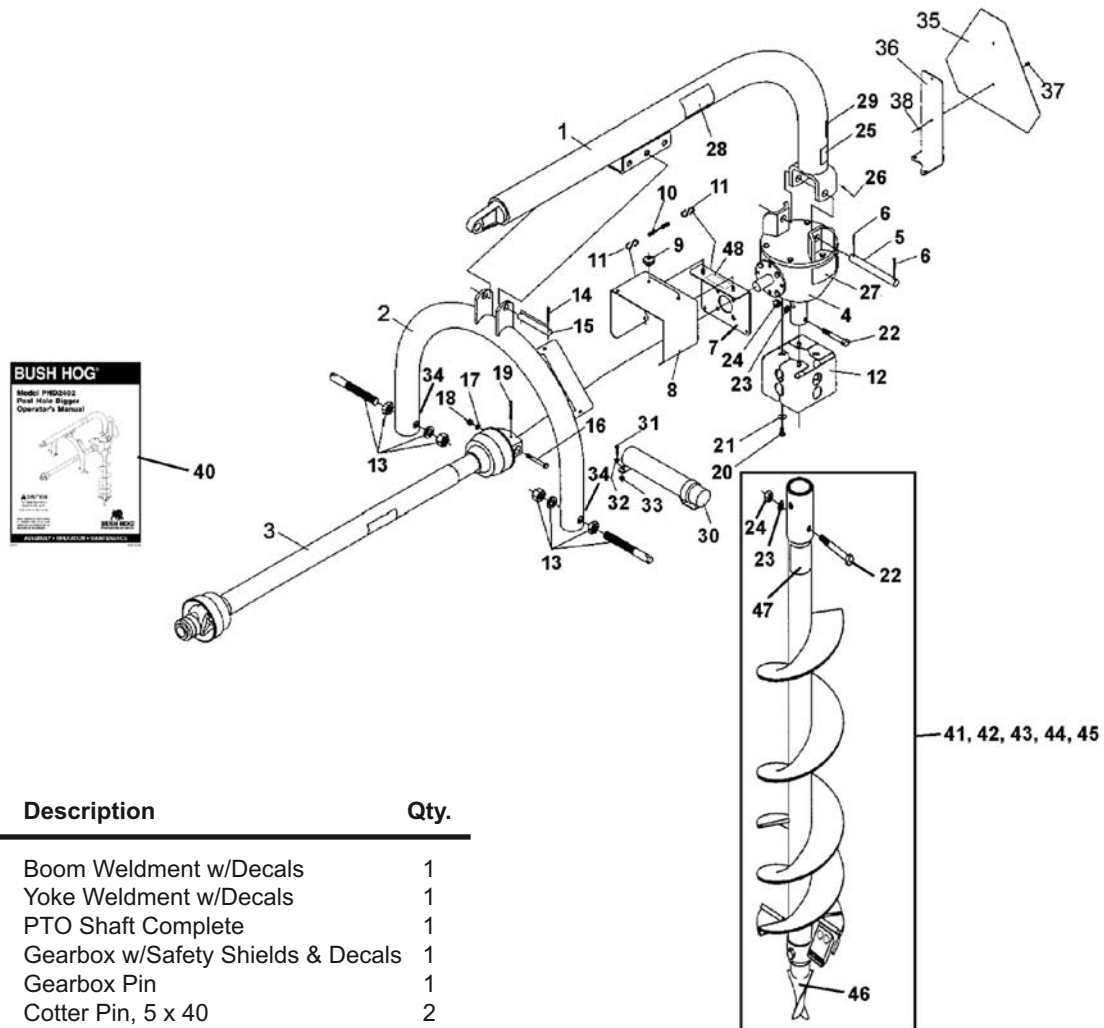
PHD 2401 POST HOLE DIGGER



Ref. No.	Part No.	Description	Qty.
1	50072177	Boom Weldment w/Decals	1
2	50072179	Yoke Weldment w/Decals	1
3	50072182	Handle w/Grip & Decal	1
4	50072180	Handle Grip	1
5	50072183	PTO Shaft Complete	1
6	50072193	Gearbox w/Safety Shields & Decal	1
7	50072190	Gearbox Output Shield (Pair)	1
8	50072187	Input Guard Back Wldmt w/Decal	1
9	50072188	Input Guard	1
10	50072189	Knob, Threaded	2
11	50072194	Chain, Safety (3 Links)	1
12	50072195	S-Hook	2
13	50072192	Gearbox Hanger Pin	1
14	50072196	Lift Pin w/Hardware	2
15	21020614	Cotter Pin, 3/16 x 1-1/2	3
16	19432	Roll Pin, 3/16 x 1-1/4	1
17	15808	Lockwasher 5/16	1
18	50072197	Boom Adjustment Pin	1
19	50072198	Shear Bolt, 5/16 x 2-1/2 Gr 2	1
20	15528	Hex Nut, 5/16	1
21	1161006	Capscrew, 5/16 x 3/4 Gr 5	1
22	50072191	Bolt, M8 x 12MM	8
23	15918BH	Flatwasher, 1/4	9
24	20864	Capscrew, 1/2 x 3 Gr 5	2
25	15806	Lockwasher, 1/2	5
26	8151600	Hex Nut, 1/2	7
27	50072174	Decal, Danger (Rotating Parts)	1
28	50072176	Decal, Post Hole Digger Instr.	1
29	50072173	Decal, Danger (Keep Clear)	1
30	50072185	Decal, Notice (Gearbox)	1
31	50072181	Decal, Notice (Handle)	1
32	50072175	Decal, 811 (Call Before You Dig)	1
33	50072200	Manual Holder, Plastic	1

Ref. No.	Part No.	Description	Qty.
34	44186BH	Capscrew, 1/4 x 1 Gr 5	2
35	50072201	Hex Nut, 1/4 WHIZ Flange	2
36	50031213	Reflector, Red 2 x 4-1/2	2
37	94359	SMV Sign	1
38	50072178	Bracket, SMV Sign	1
39	19100BH	Capscrew, 3/8 x 3/4 Gr 5	2
40	15812	Lockwasher, 3/8	2
41	4140604	Screw, Mach Slt Pn Hd #10 x 1/2	2
42	8150600	Hex Nut, #10	2
43	50083387	Decal, Bush Hog (Not Shown)	2
44	50072225	Owner's Manual	1
45	20779	Capscrew, 1/2 x 3-1/2	3
46	50072104	Auger, Std. Duty 6" Semi-Dbl Flight	1
	00780367	Auger, Hvy. Duty 6" Semi-Dbl Flight	1
47	50072105	Auger, Std. Duty 9" Semi-Dbl Flight	1
	00780368	Auger, Hvy. Duty 9" Semi-Dbl Flight	1
48	50072106	Auger, Std. Duty 12" Semi-Dbl Flight	1
	00780369	Auger, Hvy. Duty 12" Semi-Dbl Flight	1
49	50072199	Fishtail Auger Pt. (Bolt In) Std. Duty	1
	00779803	Bit, Std 2 Pt. Pilot (Hvy. Duty Auger)	1
50	50072416	Decal, Danger (Guard Missing)	1
51	50073389	Decal, Danger (Shield Missing)	1

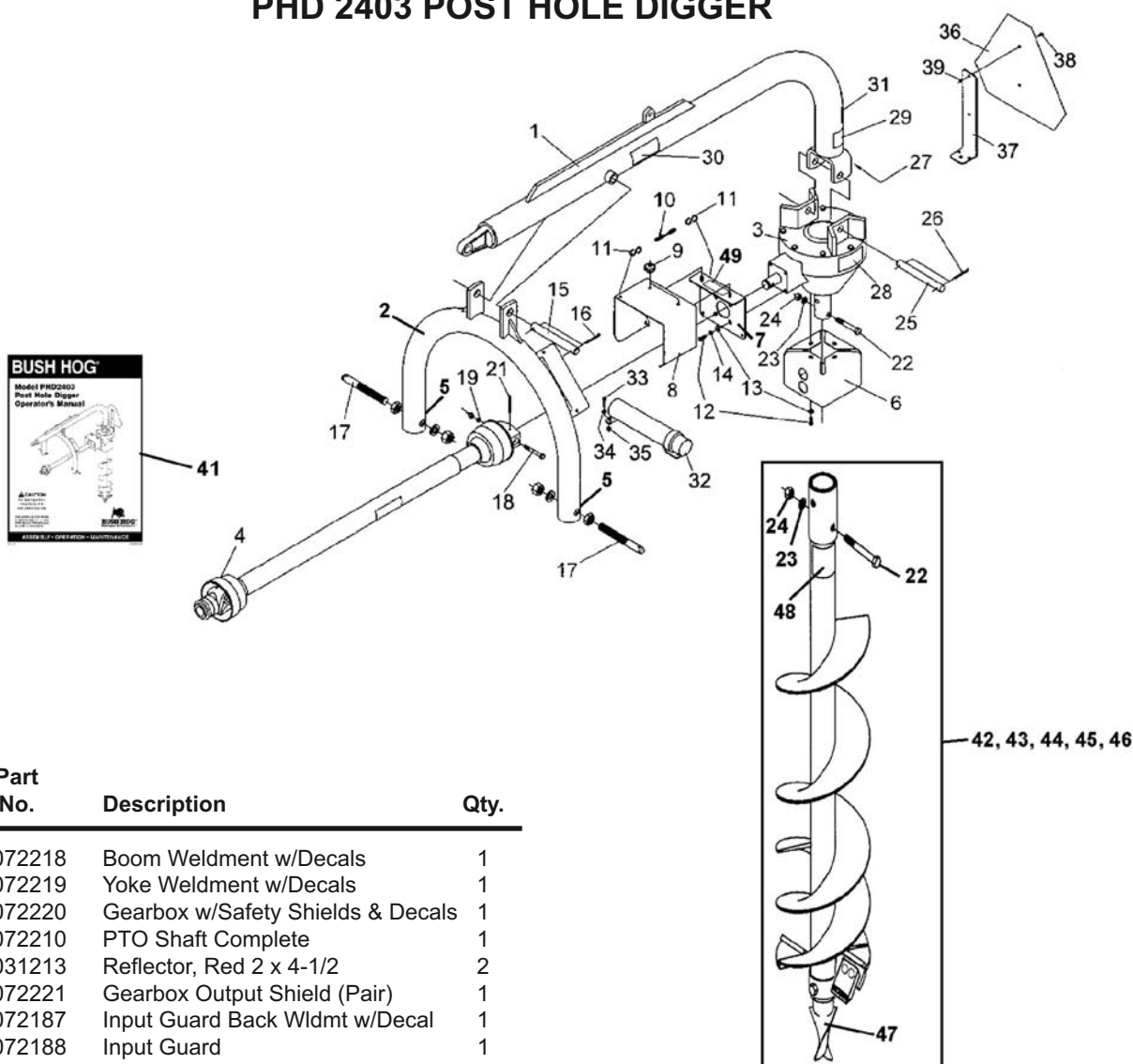
PHD 2402 POST HOLE DIGGER



Ref. No.	Part No.	Description	Qty.
1	50072209	Boom Weldment w/Decals	1
2	50072179	Yoke Weldment w/Decals	1
3	50072210	PTO Shaft Complete	1
4	50072212	Gearbox w/Safety Shields & Decals	1
5	50072213	Gearbox Pin	1
6	70495	Cotter Pin, 5 x 40	2
7	50072187	Input Guard Back Wldmt w/Decal	1
8	50072188	Input Guard	1
9	50072189	Knob, Threaded	2
10	50072194	Chain, Safety (3 Links)	1
11	50072195	S-Hook	2
12	50072190	Gearbox Output Shield (Pair)	1
13	50072196	Lift Pin w/Hardware	2
14	21020614	Cotter Pin, 3/16 x 1-1/2	2
15	50072197	Boom Adjustment Pin	1
16	50072214	Shear Bolt, 3/8 x 3 Gr 2	1
17	15812	Lockwasher 3/8	1
18	8151200	Hex Nut, 3/8	1
19	50072215	Roll Pin, 1/4 x 2-1/4	1
20	19100BH	Capscrew, 3/8 x 3/4 Gr 5	4
21	15915BH	Flatwasher, 3/8	4
22	20779	Capscrew, 1/2 x 3-1/2 Gr 5	5
23	15806	Lockwasher, 1/2	5
24	8151600	Hex Nut, 1/2	7
25	50072174	Decal, Danger (Rotating Parts)	1
26	50072176	Decal, Post Hole Digger Instr.	1
27	50072185	Decal, Notice (Gearbox)	1
28	50072173	Decal, Danger (Keep Clear)	1
29	50072175	Decal, 811 (Call Before You Dig)	1
30	50072200	Manual Holder, Plastic	1
31	44186BH	Capscrew, 1/4 x 1 Gr 5	2
32	15918BH	Flatwasher, 1/4	2
33	50072201	Hex Nut, 1/4 WHIZ Flange	2

Ref. No.	Part No.	Description	Qty.
34	50031213	Reflector, Red 2 x 4-1/2	2
35	94359	SMV Sign	1
36	50072216	Bracket, SMV Sign	1
37	4140604	Screw, Mach Slit Pn Hd #10 x 1/2	2
38	8150600	Hex Nut, #10	2
39	50083387	Decal, Bush Hog (Not Shown)	2
40	50072226	Owner's Manual	1
41	50072104	Auger, Std. Duty 6" Semi-Dbl Flight	1
	00780367	Auger, Hvy. Duty 6" Semi-Dbl Flight	1
42	50072105	Auger, Std. Duty 9" Semi-Dbl Flight	1
	00780368	Auger, Hvy. Duty 9" Semi-Dbl Flight	1
43	50072106	Auger, Std. Duty 12" Semi-Dbl Flight	1
	00780369	Auger, Hvy. Duty 12" Semi-Dbl Flight	1
44	00780371	Auger, Hvy. Duty 18" Semi-Dbl Flight	1
45	00780372	Auger, Hvy. Duty 24" Semi-Dbl Flight	1
46	50072199	Fishtail Auger Pt. (Bolt In) Std. Duty	1
	00779803	Bit, Std 2 Pt. Pilot (Hvy. Duty Auger)	1
47	50072416	Decal, Danger (Guard Missing)	1
48	50073389	Decal, Danger (Shield Missing)	1

PHD 2403 POST HOLE DIGGER



Ref. No.	Part No.	Description	Qty.
1	50072218	Boom Weldment w/Decals	1
2	50072219	Yoke Weldment w/Decals	1
3	50072220	Gearbox w/Safety Shields & Decals	1
4	50072210	PTO Shaft Complete	1
5	50031213	Reflector, Red 2 x 4-1/2	2
6	50072221	Gearbox Output Shield (Pair)	1
7	50072187	Input Guard Back Wldmt w/Decal	1
8	50072188	Input Guard	1
9	50072189	Knob, Threaded	2
10	50072194	Chain, Safety (3 Links)	1
11	50072195	S-Hook	2
12	1161006	Capscrew, 5/16 x 3/4 Gr 5	6
13	15907BH	Flatwasher, 5/16	6
14	15808	Lockwasher, 5/16	4
15	50072222	Lift Pin, 1 x 8	1
16	15474	Cotter Pin, 1/4 x 1-3/4	2
17	50072196	Lift Pin w/Hardware	2
18	50072214	Shear Bolt, 3/8 x 3 Gr 2	1
19	15812	Lockwasher, 3/8	1
20	8151200	Hex Nut, 3/8	1
21	50072215	Roll Pin, 1/4 x 2-1/4	1
22	20779	Capscrew, 1/2 x 3-1/2 Gr 5	5
23	15806	Lockwasher, 1/2	5
24	8151600	Hex Nut, 1/2	7
25	50072223	Hanger Shaft, 7/8 x 7-3/4	1
26	20167	Cotter Pin, 3/16 x 2	2
27	50072176	Decal, Post Hole Digging Instr.	1
28	50072185	Decal, Notice (Gearbox)	1
29	50072174	Decal, Danger (Rotating Parts)	1
30	50072173	Decal, Danger (Keep Clear)	1
31	50072175	Decal, 811 (Call Before You Dig)	1
32	50072200	Manual Holder, Plastic	1
33	44186BH	Capscrew, 1/4 x 1 Gr 5	2

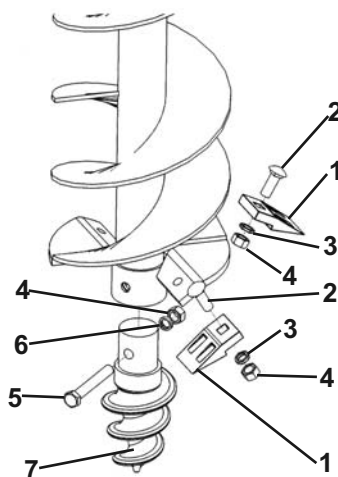
Ref. No.	Part No.	Description	Qty.
34	15918BH	Flatwasher, 1/4	2
35	50072201	Hex Nut, 1/4 WHIZ Flange	2
36	94359	SMV Sign	1
37	50072224	Bracket, SMV Sign	1
38	4140604	Screw, Mach Slit Pn Hd #10 x 1/2	2
39	8150600	Hex Nut, #10	2
40	50083387	Decal, Bush Hog (Not Shown)	2
41	50072227	Owner's Manual	1
42	50072104	Auger, Std. Duty 6" Semi-Dbl Flight	1
	00780367	Auger, Hvy. Duty 6" Semi-Dbl Flight	1
43	50072105	Auger, Std. Duty 9" Semi-Dbl Flight	1
	00780368	Auger, Hvy. Duty 9" Semi-Dbl Flight	1
44	50072106	Auger, Std. Duty 12" Semi-Dbl Flight	1
	00780369	Auger, Hvy. Duty 12" Semi-Dbl Flight	1
45	00780371	Auger, Hvy. Duty 18" Semi-Dbl Flight	1
46	00780372	Auger, Hvy. Duty 24" Semi-Dbl Flight	1
47	50072199	Fishtail Auger Pt. (Bolt In) Std. Duty	1
	00779803	Bit, Std 2 Pt. Pilot (Hvy. Duty Auger)	1
48	50072416	Decal, Danger (Guard Missing)	1
49	50073389	Decal, Danger (Shield Missing)	1

CUTTING EDGE AND POINT PARTS FOR STANDARD DUTY AUGERS

PHD 2401 POST HOLE DIGGER

PHD 2402 POST HOLE DIGGER

PHD 2403 POST HOLE DIGGER



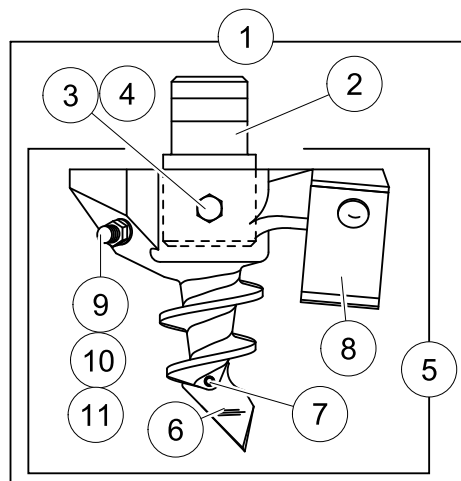
Note: When ordering a complete Auger Assembly refer to Whole Good No. Listed on Price Sheet.

50072104 - 6"
50072105 - 9"
50072106 - 12"

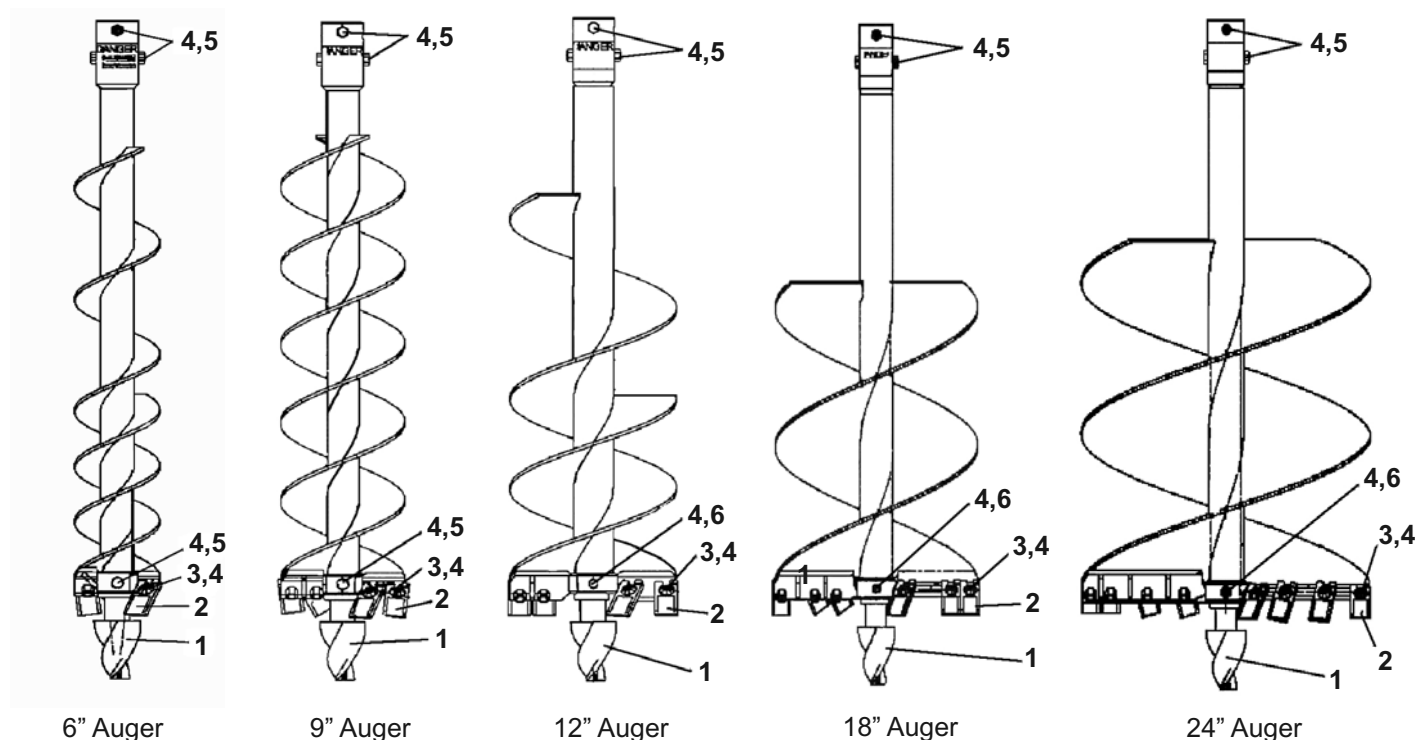
Ref. No.	Part No.	Description	Qty. Req'd Per Auger		
			6"	9"	12"
1	50072228	Red Claw Digger Tooth	2	2	3
2	5161612	Carriage Bolt 1/2 x 1-1/4 Gr 5	2	2	3
3	50072229	Lockwasher, Star 1/2 External	2	2	3
4	8151600	Hex Nut, 1/2	3	3	4
5	20779	Capscrew, 1/2 x 3-1/2 Gr 5	1	1	1
6	15806	Lockwasher, 1/2	1	1	1
7	50072199	Auger Point	1	1	1

BEAR CLAW POINT FOR STANDARD DUTY AUGERS

Ref. No.	Part No.	Description	Qty.
1	50068115	Bear Claw Point Assembly	1
2	50068114	Adapter	1
3	9151400	Locknut, 7/16	1
4	20972	Capscrew, 7/16 x 3-1/2 Gr 5	1
5	87453	Auger Point Assembly	1
6	84530	Point Tip	1
7	15389BH	Roll Pin, 1/4 x 1	1
8	87447	Blade	2
9	5161614	Carriage Bolt, 1/2 x 1-1/2 Gr 5	2
10	15806	Lockwasher, 1/2	2
11	8151600	Hex Nut, 1/2	2



PHD 2401, 2402 & 2403 POST HOLE DIGGER HEAVY DUTY AUGER



Ref. No.	Part No.	Description	Qty. Req'd Per Auger Size				
			6"	9"	12"	18"	24"
1	00779803	Bit, Standard, 2 Pt. Pilot	1	1	1	1	1
2	00780374	Tooth, Auger (40/50 Aggressor)	2	4	4	6	8
3	02886900	Carriage Bolt, 1/2 x 1-1/2 Gr 5	2	4	4	6	8
4	-----	Locknut, Top Lock 1/2	5	7	7	9	11
5	-----	Capscrew, 1/2 x 3-1/2 Gr 5	3	3	2	2	2
6	-----	Capscrew, 1/2 x 4 Gr 5	-	-	1	1	1

Note: When ordering a complete Auger Assembly refer to Whole Good No. Listed on Price Sheet.

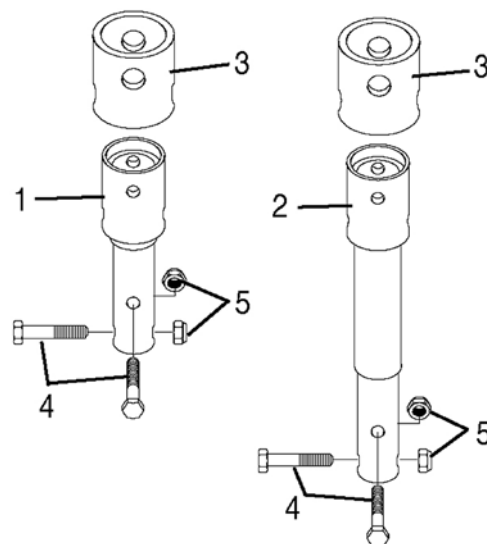
00780367 - 6"
 00780368 - 9"
 00780369 - 12"
 00780371 - 18"
 00780372 - 24"

PHD 2401, 2402 & 2403 POST HOLE DIGGER HEAVY DUTY AUGER EXTENSIONS

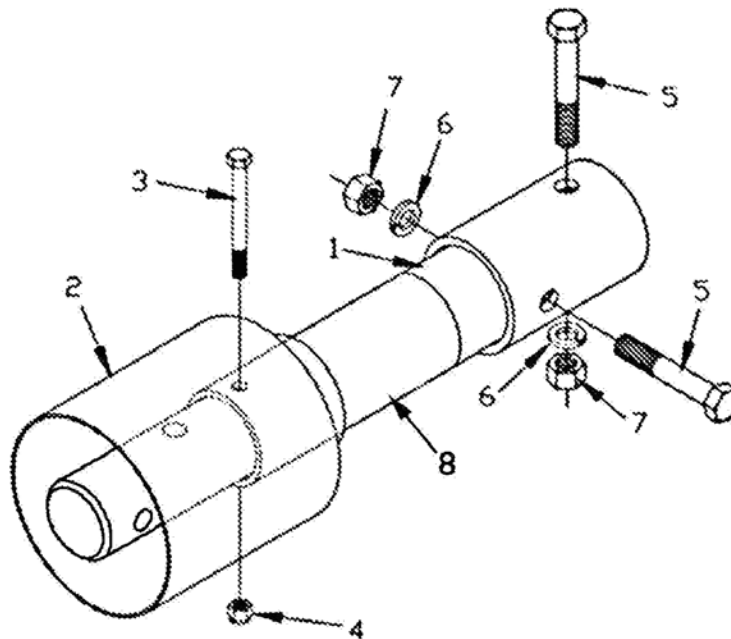
Ref. No.	Part No.	Description	Qty.
1	01100740	Extension, 7"	1
2	01100760	Extension, 14"	1
3	00768123	Shield, Plastic	1
4	-----	Capscrew, 1/2 x 3-1/4 Gr 5	2
5	-----	Locknut, Toplock, 1/2	2

Note: When ordering a complete Auger Extension refer to Whole Good No. Listed on Price Sheet.

01A01030 - 7"
 01A01040 - 14"

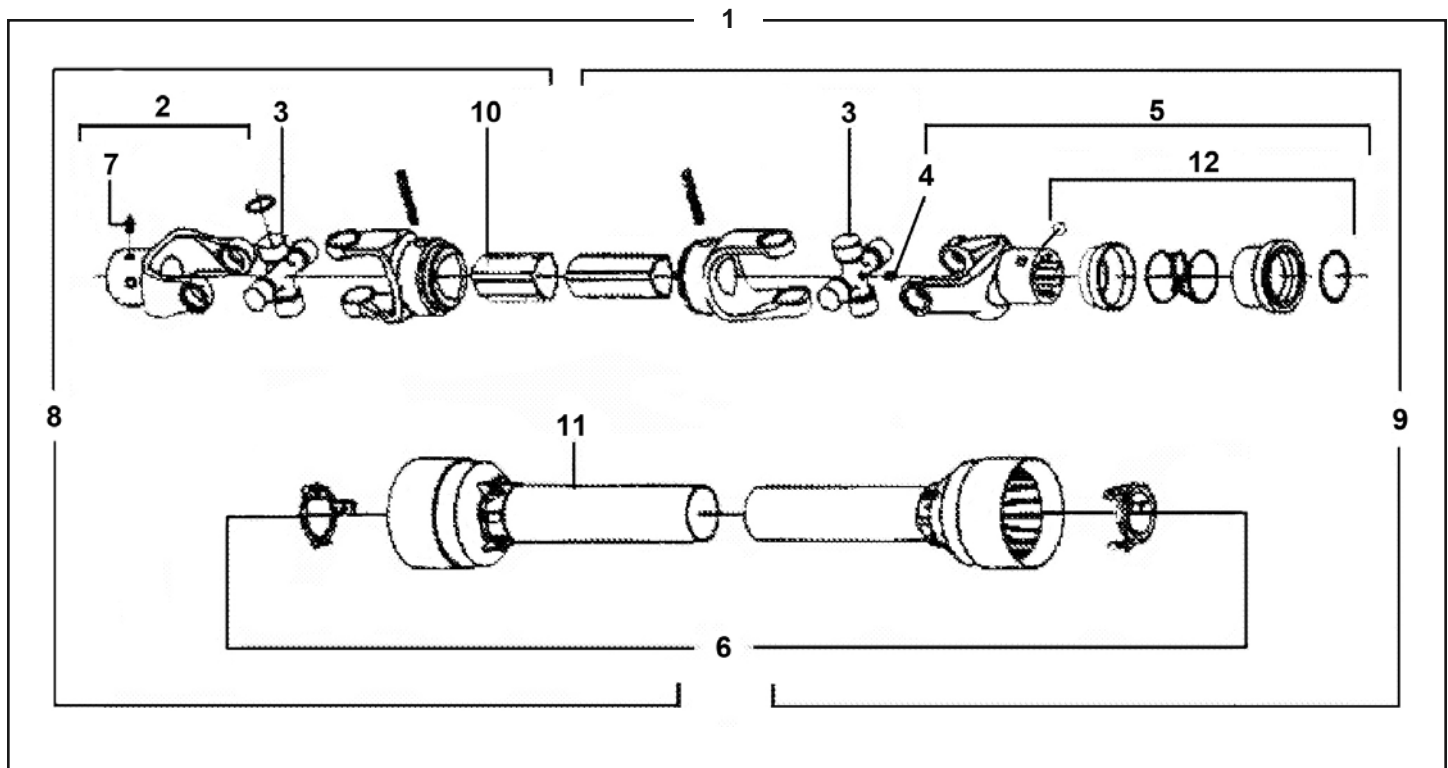


50072107 - AUGER EXTENSION W/GUARD, 12"
PHD 2401 POST HOLE DIGGER
PHD 2402 POST HOLE DIGGER
PHD 2403 POST HOLE DIGGER



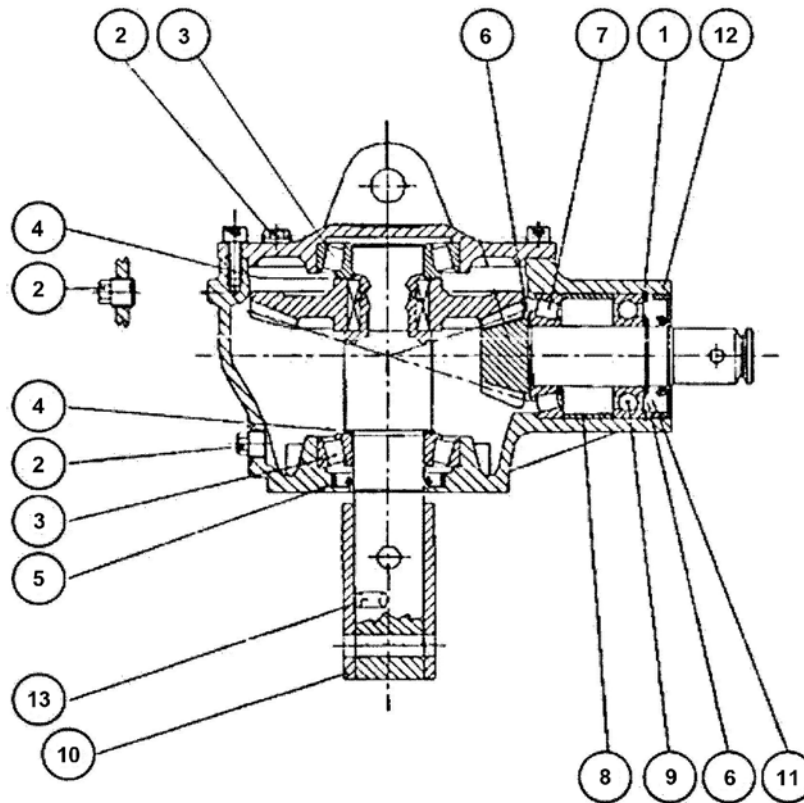
Ref. No.	Part No.	Description	Qty.
1	50072416	Decal, Danger (Guard Missing)	1
2	50072440	Shield Weldment	1
3	-----	Capscrew, 5/16 x 3 Gr 5	1
4	50072441	Hex Nut, 5/16 Nylock	1
5	20864	Capscrew, 1/2 x 3 Gr 5	2
6	15806	Lockwasher, 1/2	2
7	8151600	Hex Nut, 1/2	2
8	-----	Auger Extension, 12"	1

PTO SHAFT COMPLETE PHD 2401 POST HOLE DIGGER



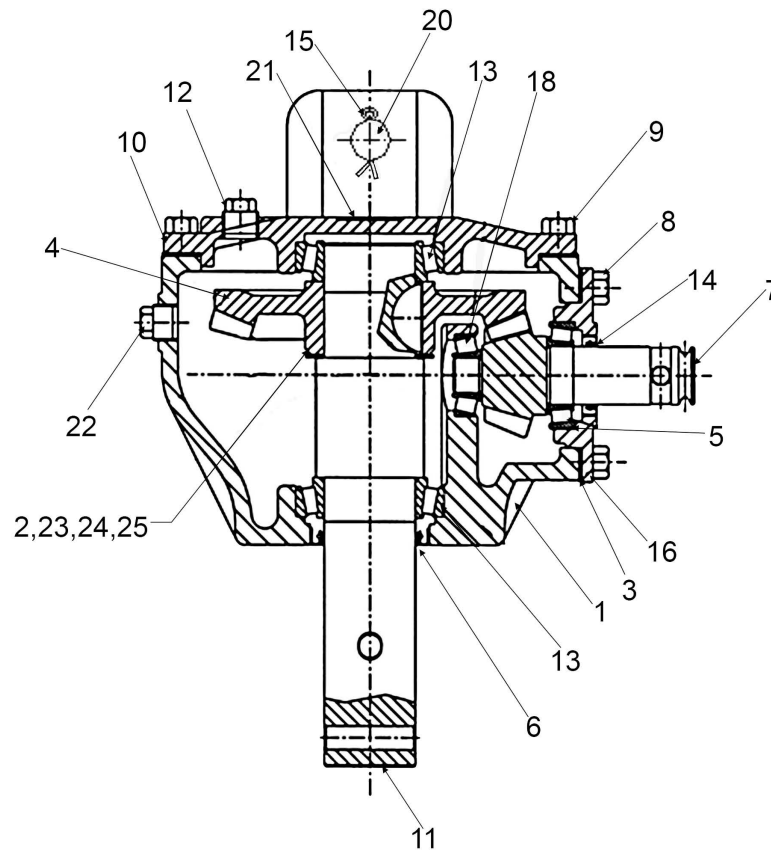
Ref. No.	Part No.	Description	Qty.
1	50072183	PTO Shaft Complete	1
2	50050240	Special Yoke	1
3	95006BH	Journal Assembly	1
4	50072206	Grease Zerk, M8 x 1.0 x 45°	2
5	50072207	Complete Collar Yoke	1
6	50072208	Complete Guard w/Inst. Manual	1
7	63946	Grease Zerk, M8 x 1	1
8	-----	1/2 PTO (Implement End)	1
9	-----	1/2 PTO (Tractor End)	1
10	78786	Decal, Danger	1
11	78608	Decal, Danger	1
12	50017480	Ball Collar Kit, 1-3/8	1

50072184 - GEARBOX ASSEMBLY PHD 2401 POST HOLE DIGGER



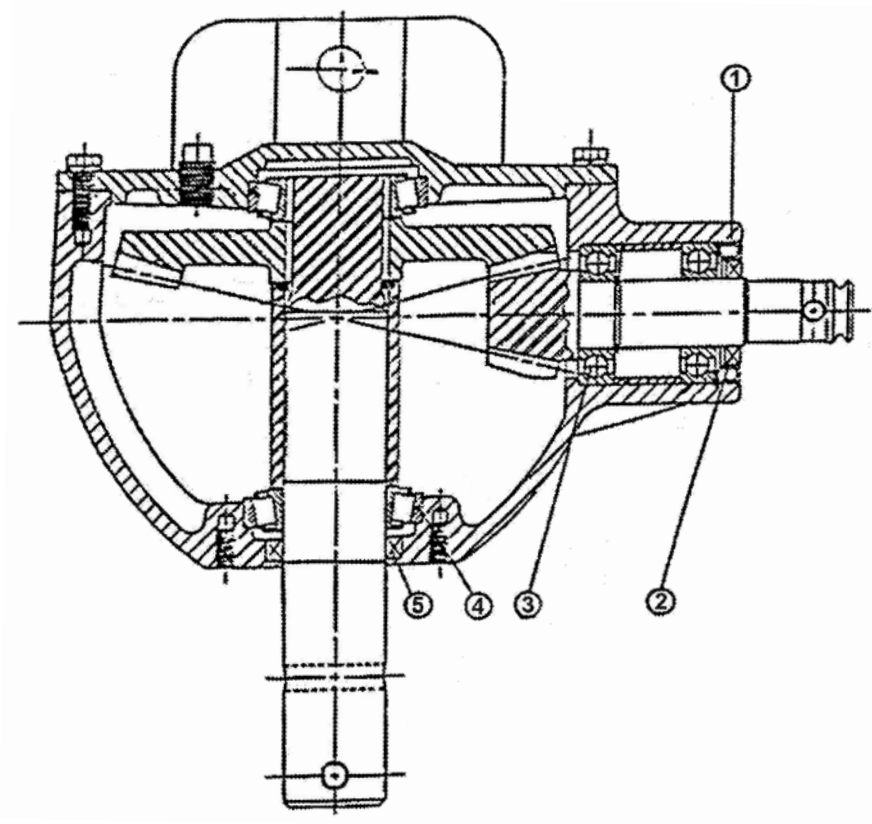
Ref. No.	Part No.	Description	Qty.
1	70133	Retaining Ring (72 x 75 x 2.5)	1
2	70292	Oil Plug	3
3	70795	Bearing 30208	2
4	-----	Shim Kit (40.3 x 51.5)	2
5	50072202	Oil Seal (40 x 62 x 7)	1
6	-----	Shim Kit (35.3 x 48)	2
7	70797	Bearing 30207	1
8	50072203	Spacer	1
9	71453	Ball Bearing 6207 (35 x 72 x 17)	1
10	50072204	Bushing	1
11	70110	Retaining Ring (35 x 33 x 2.5)	1
12	70108	Oil Seal (35 x 72 x 10)	1
13	50072205	Pin, 8 x 12 Din 1481	1

50072211 - GEARBOX ASSEMBLY PHD 2402 POST HOLE DIGGER



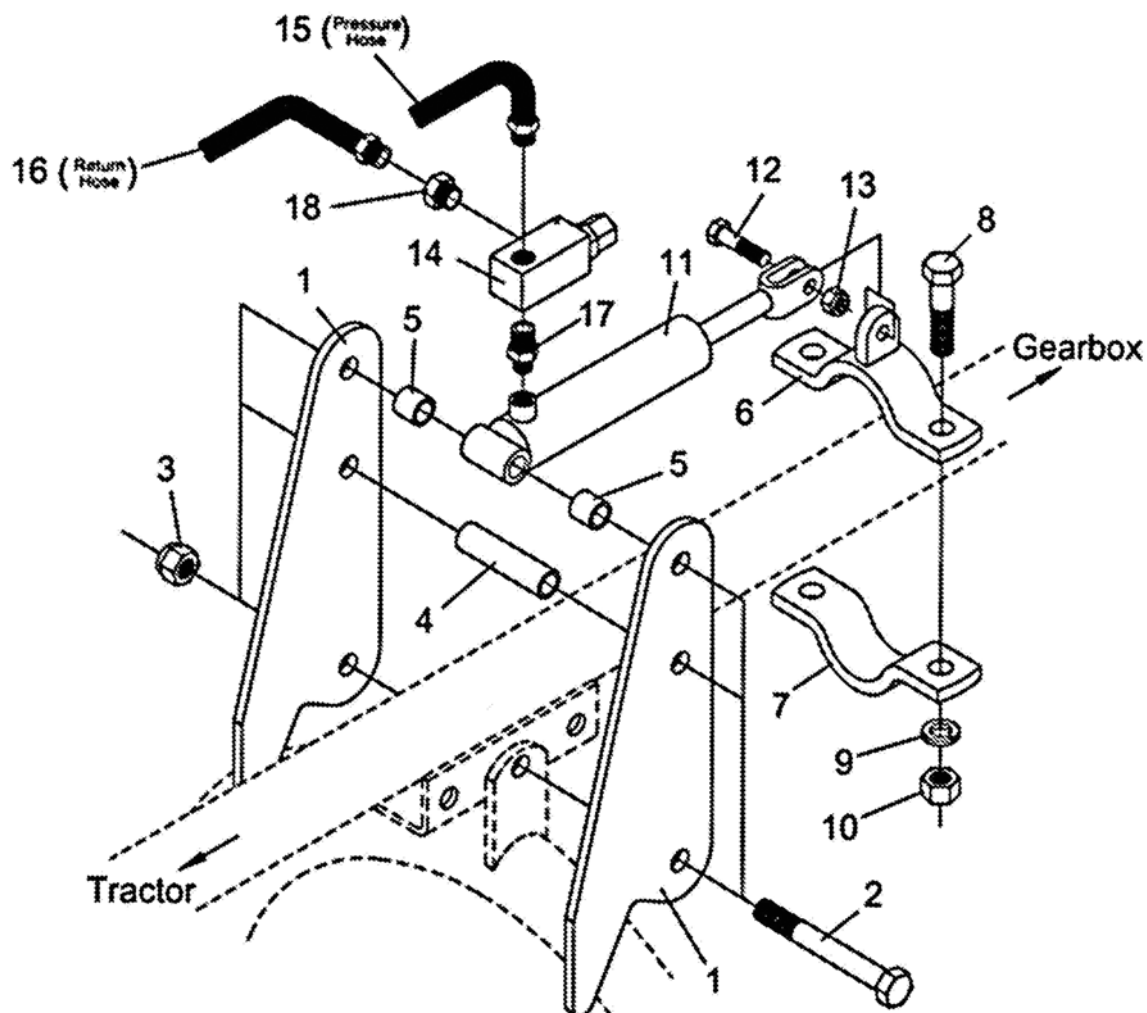
Ref. No.	Part No.	Description	Qty.
1	-----	Casting & Machining	1
2	71358	Shim 51.1 x 63 x .3	1
3	-----	Gasket Kit (81.5 x 118)	1
4	71345	Crown Gear Z35 M5.08	1
5	71346	Bearing LM67048 - LM67010	1
6	71495	Seal 50.8 x 66.62 x 7.92	1
7	71348	Pinion Z11 M5.08	1
8	70269	Bolt M10 x 25 (8.8)	4
9	44202	Bolt M10 x 30 (8.8)	6
10	-----	Top Plate	1
11	71350	Output Shaft	1
12	70393	1/2" Gas Solid Plug	1
13	71351	Roller Bearing	2
14	71352	Dust Lip 31.75 x 44.5 x 7.95	1
15	71313	Cotter Pin, 5 x 40	2
16	71497	Cover	1
17	71354	Woodruff Key 7.94 x 16.28	1
18	71355	Roller Bearing LM11910-LM11949	1
19	-----	Gasket Kit (190 x 224.5)	1
20	71356	Pivot Shaft	1
21	-----	Name Plate	1
22	70292	3/8" Gas Solid Plug	1
23	71359	Shim 51.1 x 63 x .35	1
24	71360	Shim 51.1 x 63 x .4	1
25	71361	Shim 51.1 x 63 x .5	1

50072217 - GEARBOX ASSEMBLY PHD 2403 POST HOLE DIGGER



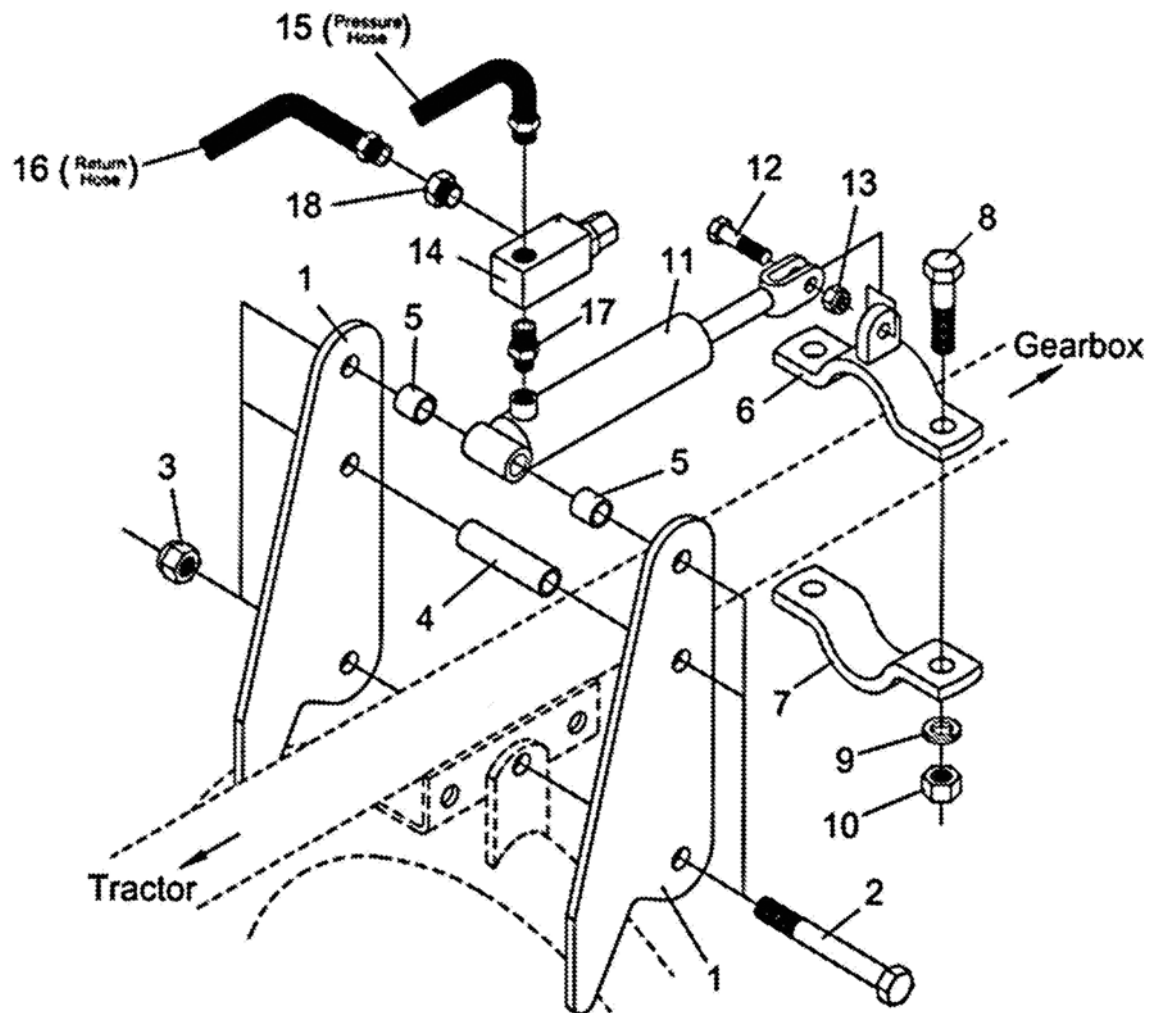
Ref. No.	Part No.	Description	Qty.
1	50072411	Seal Adapter	1
2	50072412	Input Seal, 35 x 72 x 10	1
3	50072413	Bearing, 207K Ball	2
4	50072414	Bearing Assembly 30210	2
5	50072415	Output Seal, 70 x 50 x 12	1

50072109 HYDRAULIC DOWN FORCE KIT PHD 2401 POST HOLE DIGGER



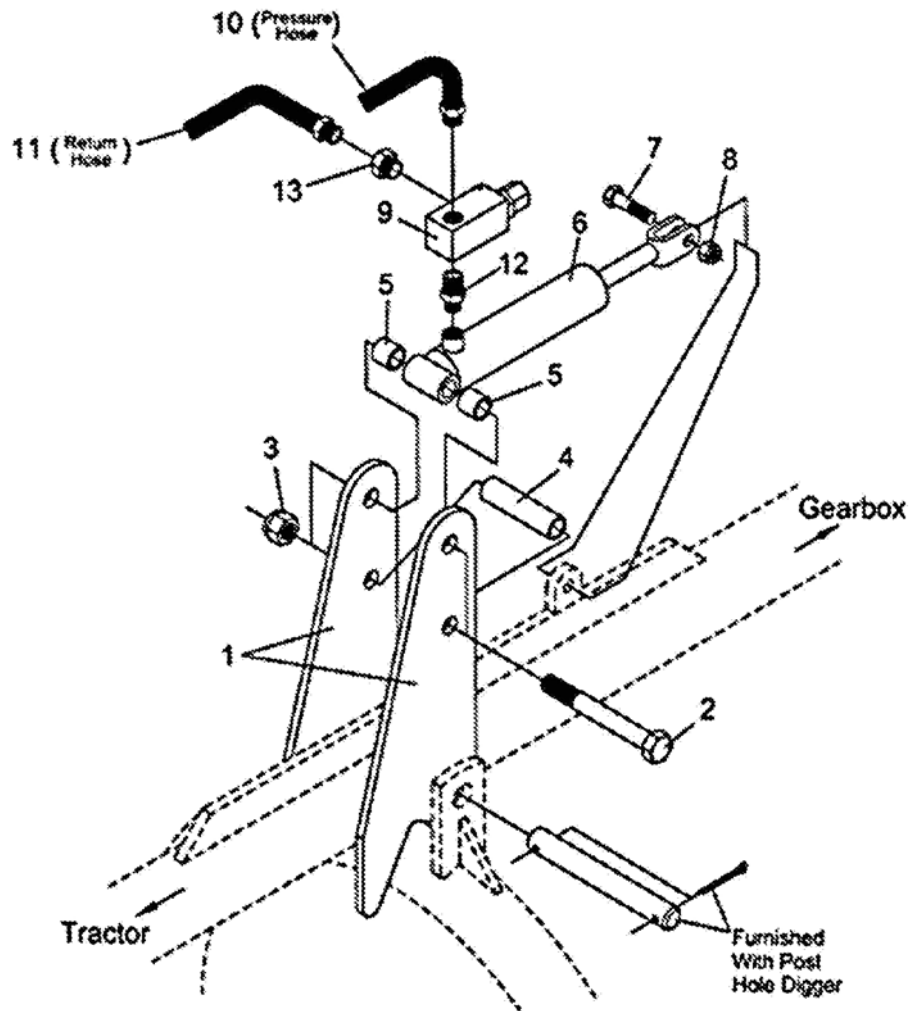
Ref. No.	Part No.	Description	Qty.
1	50072417	Pivot Plate	2
2	20207	Capscrew, 3/4 x 6 Gr 5	3
3	50072418	Hex Nut, 3/4 Nylock	3
4	50072419	Long Spacer, 3-7/8	1
5	50072420	Short Spacer, 15/16	2
6	50072421	Upper Clamp Weldment	1
7	50072422	Lower Clamp Half	1
8	19021	Capscrew, 3/4 x 3 Gr 5	2
9	146	Lockwasher, 3/4	2
10	19517	Hex Nut, 3/4	2
11	50072423	Hydraulic Cylinder, 1-1/2 x 6	1
12	20110BH	Capscrew, 1/2 x 2 Gr 5	1
13	50072424	Hex Nut, 1/2 Nylock	1
14	50072425	Relief Valve	1
15	50072426	Hyd. Hose, 3/8 x 60	1
16	50072427	Hyd. Hose, 3/8 x 72	1
17	50072428	Adapter Fitting, 3/8 to 1/2	1
18	50072429	Reducer Fitting, 1/2 to 3/8	1

50072110 HYDRAULIC DOWN FORCE KIT PHD 2402 POST HOLE DIGGER



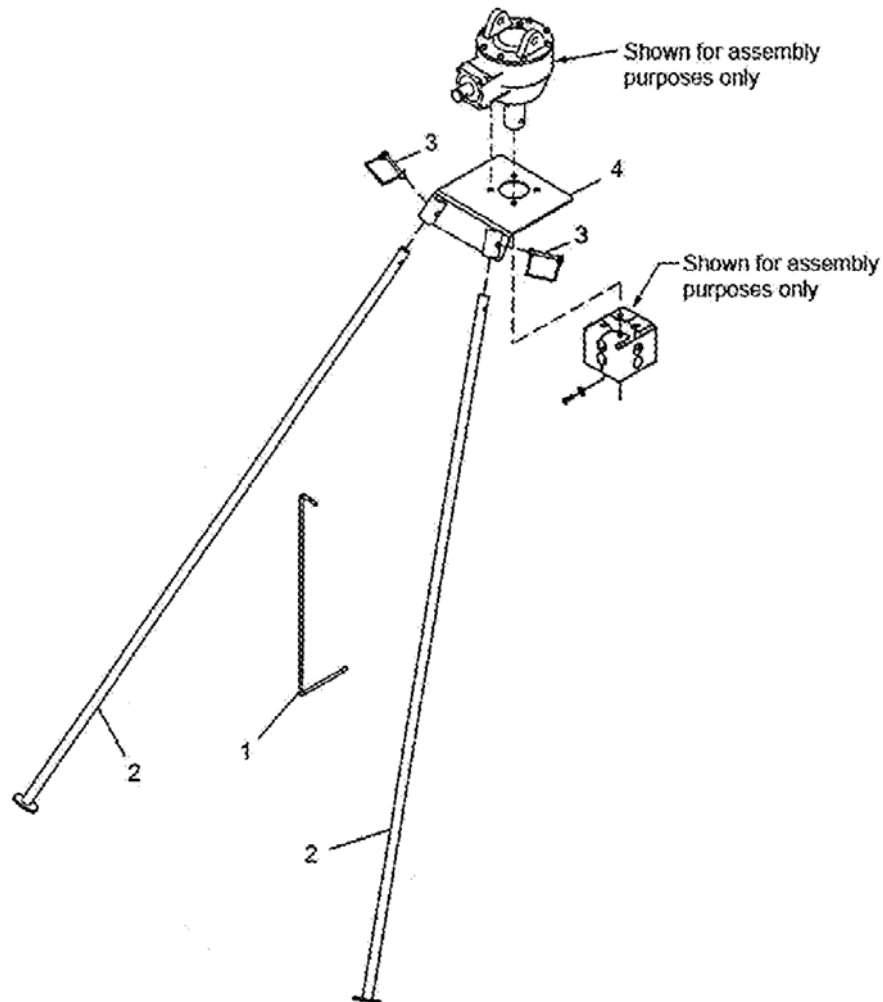
Ref. No.	Part No.	Description	Qty.
1	50072417	Pivot Plate	2
2	20207	Capscrew, 3/4 x 6 Gr 5	3
3	50072418	Hex Nut, 3/4 Nylock	3
4	50072419	Long Spacer, 3-7/8	1
5	50072420	Short Spacer, 15/16	2
6	50072430	Upper Clamp Weldment	1
7	50072431	Lower Clamp Half	1
8	19021	Capscrew, 3/4 x 3 Gr 5	2
9	146	Lockwasher, 3/4	2
10	19517	Hex Nut, 3/4	2
11	50072423	Hydraulic Cylinder, 1-1/2 x 6	1
12	20110BH	Capscrew, 1/2 x 2 Gr 5	1
13	50072424	Hex Nut, 1/2 Nylock	1
14	50072425	Relief Valve	1
15	50072426	Hyd. Hose, 3/8 x 60	1
16	50072427	Hyd. Hose, 3/8 x 72	1
17	50072428	Adapter Fitting, 3/8 to 1/2	1
18	50072429	Reducer Fitting, 1/2 to 3/8	1

50072112 HYDRAULIC DOWN FORCE KIT PHD 2403 POST HOLE DIGGER



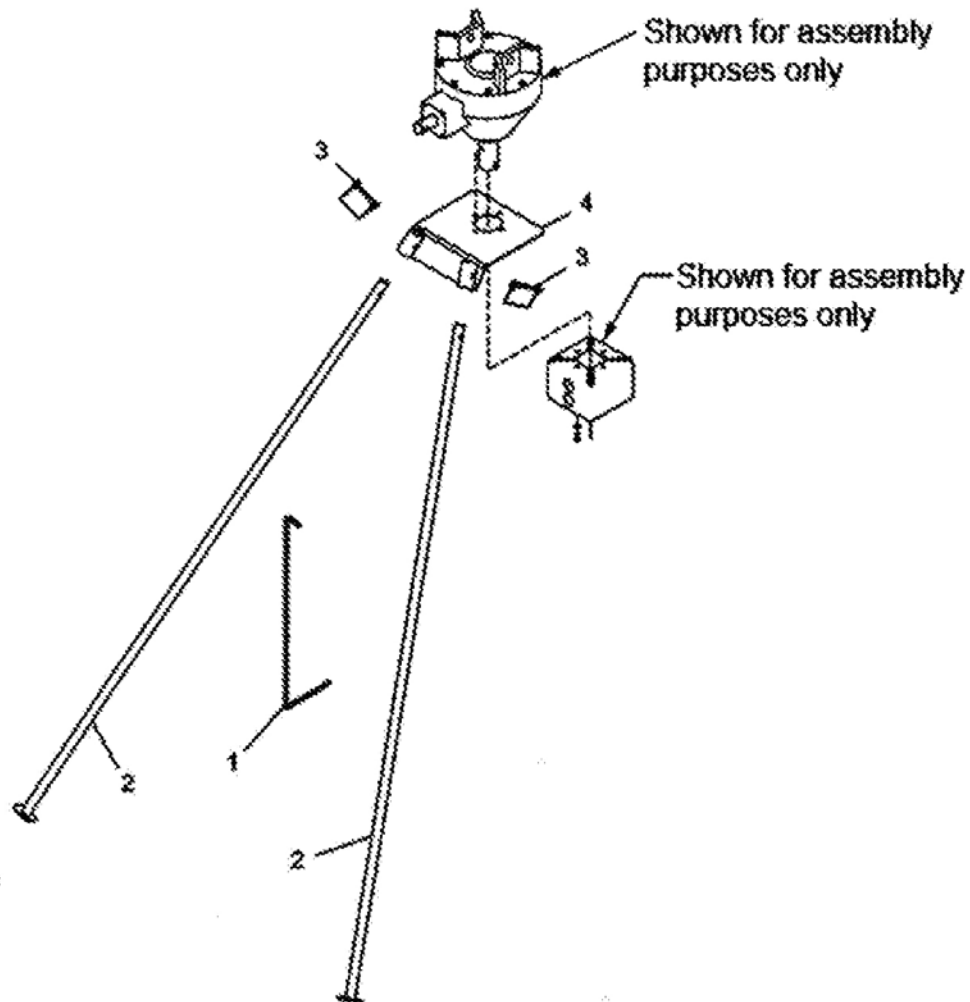
Ref. No.	Part No.	Description	Qty.
1	50072432	Pivot Plate	2
2	20207	Capscrew, 3/4 x 6 Gr 5	2
3	50072418	Hex Nut, 3/4 Nylock	2
4	50072433	Long Spacer, 4-1/8	1
5	50072434	Short Spacer, 1-1/16	2
6	50072423	Hydraulic Cylinder	1
7	20110BH	Capscrew, 1/2 x 2 Gr 5	1
8	50072424	Hex Nut, 1/2 Nylock	1
9	50072425	Relief Valve	1
10	50072426	Hyd. Hose, 3/8 x 60	1
11	50072427	Hyd. Hose, 3/8 x 72	1
12	50072428	Adapter Fitting, 3/8 to 1/2	1
13	50072429	Reducer Fitting, 1/2 to 3/8	1

50072108 - PARKING STAND KIT
PHD 2401 POST HOLE DIGGER
PHD 2402 POST HOLE DIGGER



Ref. No.	Part No.	Description	Qty.
1	50072435	Hook, PHD/PTO	1
2	50072436	Leg, PHD Stand	2
3	50072437	Pin, Locking 5/16"Ø	2
4	50072438	Plate, Weldment Stand	1

50072111 - PARKING STAND KIT PHD 2403 POST HOLE DIGGER



Ref. No.	Part No.	Description	Qty.
1	50072435	Hook, PHD/PTO	1
2	50072436	Leg, PHD Stand	2
3	50072437	Pin, Locking 5/16"Ø	2
4	50072439	Plate, Weldment Stand	1

SAFETY DECALS



1



2



3



4



5



6



7



8



9



10

Ref. No.	Part No.	Description	Qty.
1	50072173	Decal, Danger (Keep Clean)	1
2	50072174	Decal, Danger (Rotating Parts)	1
3	50072175	Decal, 811 (Call Before You Dig)	1
4	50072176	Decal, Post Hole Digger Instr.	1
5	50072181	Decal, Notice (Handle) - PHD2401 Only	1
6	50072185	Decal, Notice (Gearbox)	1
7	50072416	Decal, Danger (Guard Missing)	1
8	50073389	Decal, Danger (Shield Missing)	1
9	50083387	Decal, Bush Hog	2
10	50031213	Reflector, Red 2 x 4-1/2	1



BUSH HOG®

2501 GRIFFIN AVE. • SELMA, AL 36703
WWW.BUSHHOG.COM