

# BUSH HOG®

# 14215R-2

## MULTIPLE SPINDLE ROTARY MOWER

Revised 10/23

# PARTS MANUAL SECTION 125



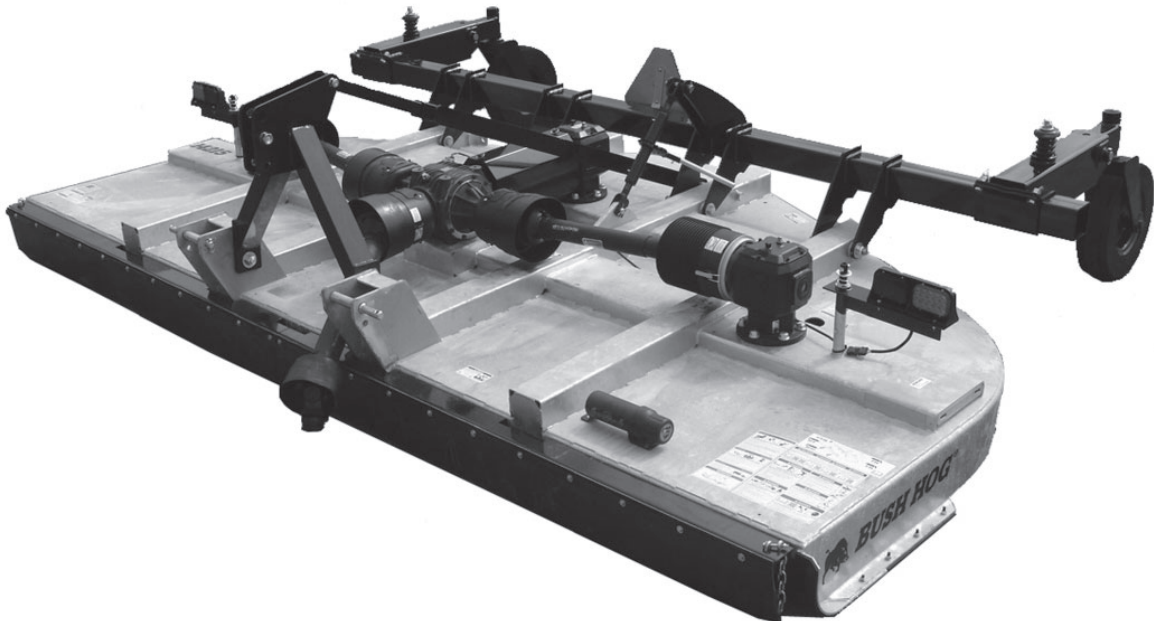
An Operator's Manual was shipped with the equipment. The Operator's Manual is an integral part of the safe operation of this machine and must be maintained with the unit at all times. **READ, UNDERSTAND, and FOLLOW** the Safety and Operation Instructions contained in this manual before operating the equipment. If the Operator's Manual is not with the equipment, contact your dealer or Bush Hog to obtain a copy before operating the equipment.

Safety Video

Important Operating and Safety Instructions are found in the Mower Safety Video that can be instantly accessed on the Internet at: [www.algqr.com/bve](http://www.algqr.com/bve)



[www.algqr.com/bve](http://www.algqr.com/bve)



## BUSH HOG®

2501 Griffin Ave.  
Selma, AL 36703  
Parts Ordering 1-800-304-2836  
[www.bushhog.com](http://www.bushhog.com)

### ATENCIÓN!

LEA EL INSTRUCTIVO

Si No Lee Ingles, Pida Ayuda a Alguien  
Que Si Lo Lea Para Que le Traduzca las  
Medidas de Seguridad.



**A** MEMBER OF THE  
**ALAMO GROUP**  
ALWAYS ON THE CUTTING EDGE®

## PARTS ORDERING GUIDE

The following instructions are offered to help eliminate needless delay and error in processing purchase orders for the equipment in this section.

1. The Parts Section is prepared in logical sequence and grouping of parts that belong to the basic machine featured in this manual. Part Numbers and Descriptions are given to help locate the parts and quantities required.
2. The Purchase Order must include the name and address of the person or organization ordering the parts, who should be charged, and if possible, the serial number of the machine for which the parts are ordered.
3. The Purchase Order must clearly list the quantity of each part, the complete and correct part number (be sure to include all periods), and the basic name of the part.
4. The Manufacturer reserves the right to substitute parts where applicable.
5. Some parts are unlisted items which are special production items not normally stocked and are subject to special handling. Request a quotation for such parts before sending a Purchase Order.
6. The Manufacturer reserves the right to change prices without prior notice.



For maximum safety and to guarantee optimum product reliability, always use genuine BUSH HOG Parts. The use of inferior replacement parts may cause premature or catastrophic failure which could result in serious injury or death. Direct any questions regarding parts to:

**BUSH HOG**  
2501 Griffin Ave.  
Selma, AL. 36703  
[www.bushhog.com](http://www.bushhog.com)  
Contact Us  
1-800-304-2836



**BUSH HOG®**

# To The Owner/Operator/Dealer

All implements with moving parts are potentially hazardous. There is no substitute for a cautious, safe-minded operator who recognizes the potential hazards and follows reasonable safety practices. The manufacturer has designed this implement to be used with all its safety equipment properly attached to minimize the chance of accidents.

**BEFORE YOU START!** Read the safety messages on the implement and shown in your manual. Observe the rules of safety and common sense!

## **DANGER**

**FAILING TO FOLLOW SAFETY MESSAGES AND OPERATING INSTRUCTION CAN CAUSE SERIOUS BODILY INJURY OR EVEN DEATH TO OPERATOR AND OTHERS IN THE AREA.**

<p><b>1.</b></p> 	<p><b>2. NO RIDERS. NO CHILDREN OPERATORS.</b></p> 	<p><b>3. USE SAFETY SHOES, HARD HAT, SAFETY GLASSES, SEAT BELTS, ROPS &amp; OPS.</b></p> 	<p><b>4. BLOCK UP SECURELY BEFORE WORKING UNDER.</b></p> 
--	--	---	--

**1.** Study and understand Operator's Manuals, Safety Decals, and Instructional Decals for tractor and implement to prevent misuse, abuse, and accidents. Practice before operating in a confined area or near passersby.  
• Learn how to stop engine suddenly in an emergency. Be alert for passersby and especially children.

**2.** Allow no children on or near folding mower or tractor. Allow no riders on tractor or implement. Falling off may cause serious injury or death from being run over by tractor or mower or contact with rotating blades.

**3.** Operate only with tractor having Roll-Over Protective Structure (ROPS) and with seat belt securely fastened to prevent injury and possible death from falling off or tractor overturn.  
• Personal Protective Equipment such as Hard Hat, Safety Glasses, Safety Shoes, & Ear Plugs are recommended.

**4.** Block up or support raised machine and all lifted components securely before putting hands or feet under or working underneath any lifted component to prevent crushing injury or death from sudden dropping or inadvertent operation of controls. Make certain area is clear before lowering or folding.

**5.** Before transporting, put Lift Lever in detent or full-lift position. Install Transport Safety Devices securely on folding mowers. Put Booms securely in Transport Rest.  
• Folding and Boom Mowers have raised center of gravity. Slow down when turning and on hillsides.

**6.** Make certain that SMV sign, warning lights, and reflectors are clearly visible. Follow local traffic codes.

**7.** Never operate with Cutting Head or Folding Section raised if passersby, bystanders, or traffic are in the area to reduce possibility of injury or death from objects thrown by Blades under Guards or mower structure.

**8.** Before dismounting, secure implement in transport position or lower to ground.  
• Put tractor in park position or set brake, disengage PTO, stop engine, remove key, and wait until noise of rotation has ceased to prevent crushing by entanglement in rotating parts which could cause injury or death.  
• Never mount or dismount a moving vehicle. Crushing from runover may cause serious injury or death.

<p><b>5. TRANSPORT SAFELY, LOCK UP.</b></p> 	<p><b>6. USE SMV, LIGHTS, &amp; REFLECTORS.</b></p> 	<p><b>7. DO NOT OPERATE WITH CUTTER OR WING RAISED</b></p> 	<p><b>8. DO NOT MOUNT OR DISMOUNT WHILE MOVING.</b></p> 
---	---	---	---

02967827

 **WARNING**

**Cancer and Reproductive Harm**

[www.P65Warnings.ca.gov](http://www.P65Warnings.ca.gov)

### WARRANTY INFORMATION:

Read and understand the complete Warranty Statement found in this Manual. Fill out the Warranty Registration Form in full and return it to within 30 Days. Make certain the Serial Number of the Machine is recorded on the Warranty Card and on the Warranty Form that you retain.

# WARRANTY

## LIMITED WARRANTY

Bush Hog warrants to the original purchaser of any new Bush Hog equipment, purchased from an authorized Bush Hog dealer, that the equipment be free from defects in material and workmanship for a period of one (1) year for non-commercial, state and municipalities' use and ninety (90) days for commercial use from date of retail sale. The obligation of Bush Hog to the purchaser under this warranty is limited to the repair or replacement of defective parts.

Replacement or repair parts installed in the equipment covered by this limited warranty are warranted for ninety (90) days from the date of purchase of such part or to the expiration of the applicable new equipment warranty period, whichever occurs later. Warranted parts shall be provided at no cost to the user at an authorized Bush Hog dealer during regular working hours. Bush Hog reserves the right to inspect any equipment or parts which are claimed to have been defective in material or workmanship.

In addition to the standard Limited Warranty shown above, Bush Hog also provides:

A TEN-YEAR (120 months) GEARBOX LIMITED WARRANTY\* (6 Years Full Coverage; Parts Only for Years 7 through 10) provided they have been properly maintained† and have not been subjected to abuse or mis-use except as limited below.

### \*WARRANTY LIMITATIONS - GEARBOX

- A. Gearbox warranty extends to the original purchaser of a Bush Hog Rotary Cutter Only.
- B. Warranty claimant must provide proper product registration and original receipt for purchase.
- C. Bush Hog reserves the right to warrant Gearboxes and components at our discretion based on photographic or video evidence of product failure.
- D. If Bush Hog deems a Gearbox failed due to defects in materials or workmanship, users' Gearboxes may be rebuilt by Bush Hog or replaced by new or rebuilt Gearboxes at the option of Bush Hog.

A ONE-YEAR (12 months) LIMITED WARRANTY\*\* on the DRIVELINE components provided they have been properly maintained† and have not been subjected to abuse or mis-use.

### \* \*\*WARRANTY LIMITATIONS - DRIVELINE

- A. A ONE-YEAR (12 months) DRIVELINE LIMITED WARRANTY applies to SHIELDS except where evidence of wear from contact with other parts on the shield voids this warranty.
- B. Shield Bearings are wearing parts and are not warrantable.
- C. Slip-Clutch Plates are wearing parts and are not warrantable. Evidence of "burning up" Slip-Clutch Plates due to improper adjustment will void warranty on Slip-Clutch Parts.

† NOTE - "properly maintained" specifically includes, but is not limited to:

- A) Running Gearboxes with the proper amount of the correct lubricant.
- B) Adjusting Slip-Clutches correctly to provide proper protection for Driveline and Gearbox components.
- C) Proper lubrication of all DRIVELINE components as specified.
- D) Maintaining proper bearing preload on all Gearbox shafts.

# WARRANTY

## DISCLAIMER OF IMPLIED WARRANTIES & CONSEQUENTIAL DAMAGES

Bush Hog's obligation under this limited warranty, to the extent allowed by law, is in lieu of all warranties, implied or expressed, INCLUDING IMPLIED WARRANTIES OF MERCHANTABILITY AND FITNESS FOR A PARTICULAR PURPOSE and any liability for incidental and consequential damages with respect to the sale or use of the items warranted. Such incidental and consequential damages shall include but not be limited to: transportation charges other than normal freight charges; cost of installation other than cost approved by Bush Hog; duty; taxes; charges for normal service or adjustment; loss of crops or any other loss of income; rental of substitute equipment, expenses due to loss, damage, detention or delay in the delivery of equipment or parts resulting from acts beyond the control of Bush Hog.

### THIS LIMITED WARRANTY SHALL NOT APPLY:

1. To vendor items which carry their own warranties.
2. If the unit has been subjected to misapplication, abuse, misuse, negligence, fire or other accident.
3. If parts not made or supplied by Bush Hog have been used in connection with the unit, if, in the sole judgment of Bush Hog such use affects its performance, stability or reliability.
4. If the unit has been altered or repaired outside of an authorized Bush Hog dealership in a manner which, in the sole judgment of Bush Hog, affects its performance, stability or reliability.
5. To normal maintenance service and normal replacement items such as gearbox lubricant, hydraulic fluid, worn blades, or to normal deterioration of such things as belts and exterior finish due to use or exposure.
6. To expendable or wear items such as teeth, chains, sprockets, belts, springs and any other items that in the company's sole judgment is a wear item.

**IN ORDER FOR WARRANTIES TO BE PROCESSED, PRODUCT WARRANTY REGISTRATION MUST BE FILED WITH BUSH HOG THROUGH THE SELLING DEALER.**

Retain original purchase receipt and record the model number, serial number and date of purchase. This information will be helpful to your dealer if parts or services are required.

MODEL NUMBER \_\_\_\_\_

SERIAL NUMBER \_\_\_\_\_

DATE OF PURCHASE \_\_\_\_\_

**NO EMPLOYEE OR REPRESENTATIVE OF BUSH HOG IS AUTHORIZED TO CHANGE THIS LIMITED WARRANTY IN ANY WAY OR GRANT ANY OTHER WARRANTY UNLESS SUCH CHANGE IS MADE IN WRITING AND SIGNED BY BUSH HOG'S SERVICE MANAGER, 2501 GRIFFIN AVE., SELMA, AL. 36703**



# TABLE OF CONTENTS

## 14215R-2 SERIES

### ROTARY CUTTER

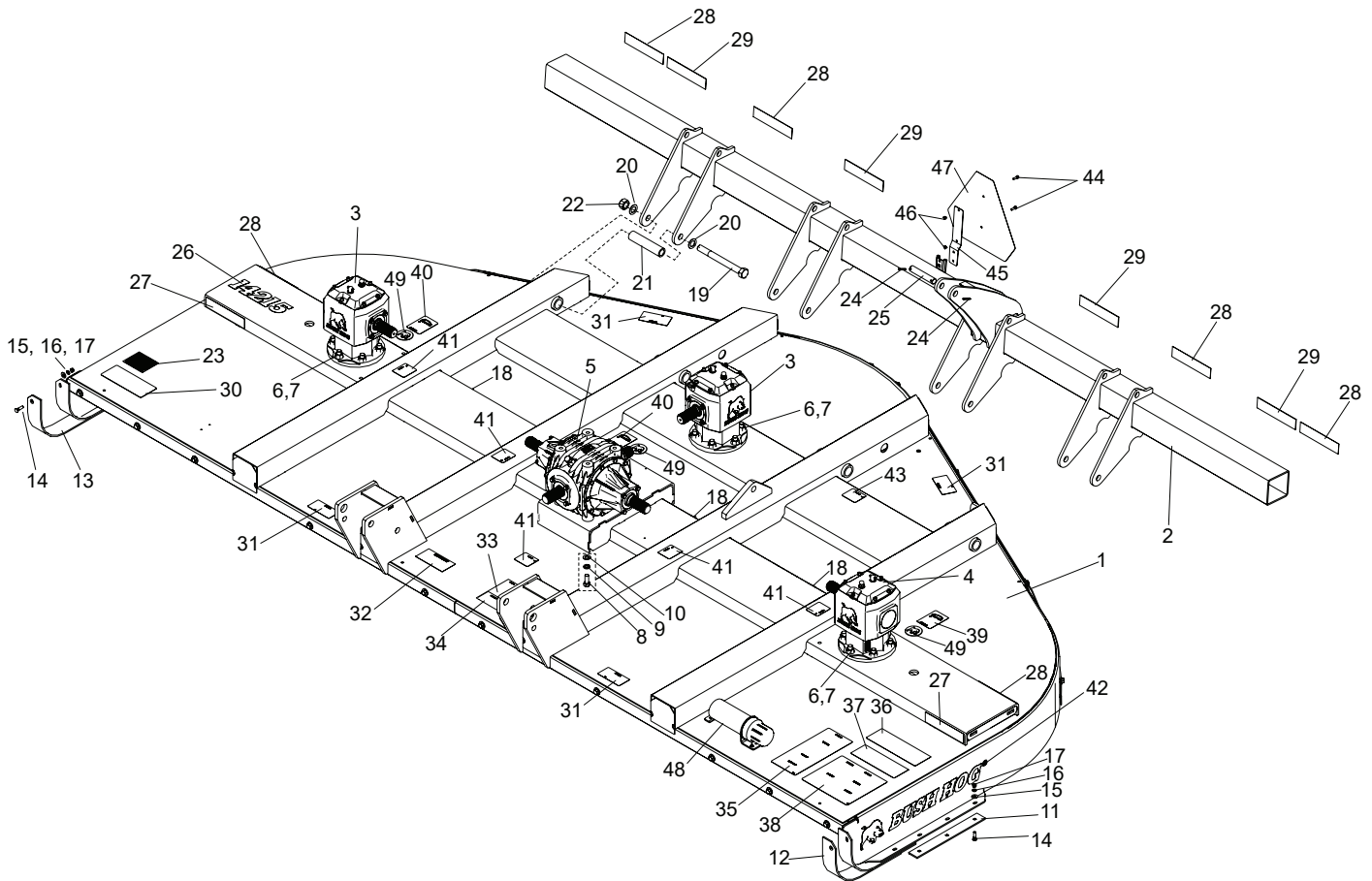
---

Base Assembly.....	125-1-1
Axle Weldment.....	See Base Assembly
Skids.....	See Base Assembly
Driveline Shielding.....	125-1-2
Blades & Blade Holders.....	125-2-1
Light Assemblies.....	125-3-1
Belting, Front.....	125-3-2
Bands, Rear Metal.....	125-3-3
Gearbox Assemblies.....	125-4-1 through 125-4-1
Driveshafts.....	125-5-1 through 125-5-3
Hitch, 3-Point Lift.....	125-6-1
Tailwheel Assemblies.....	125-7-1
Hydraulic Components.....	125-8-1
Ratchet Assembly.....	125-8-1
Stop Collar Kit.....	125-8-1
Cylinder, Hydraulic.....	125-8-2 through 125-8-3



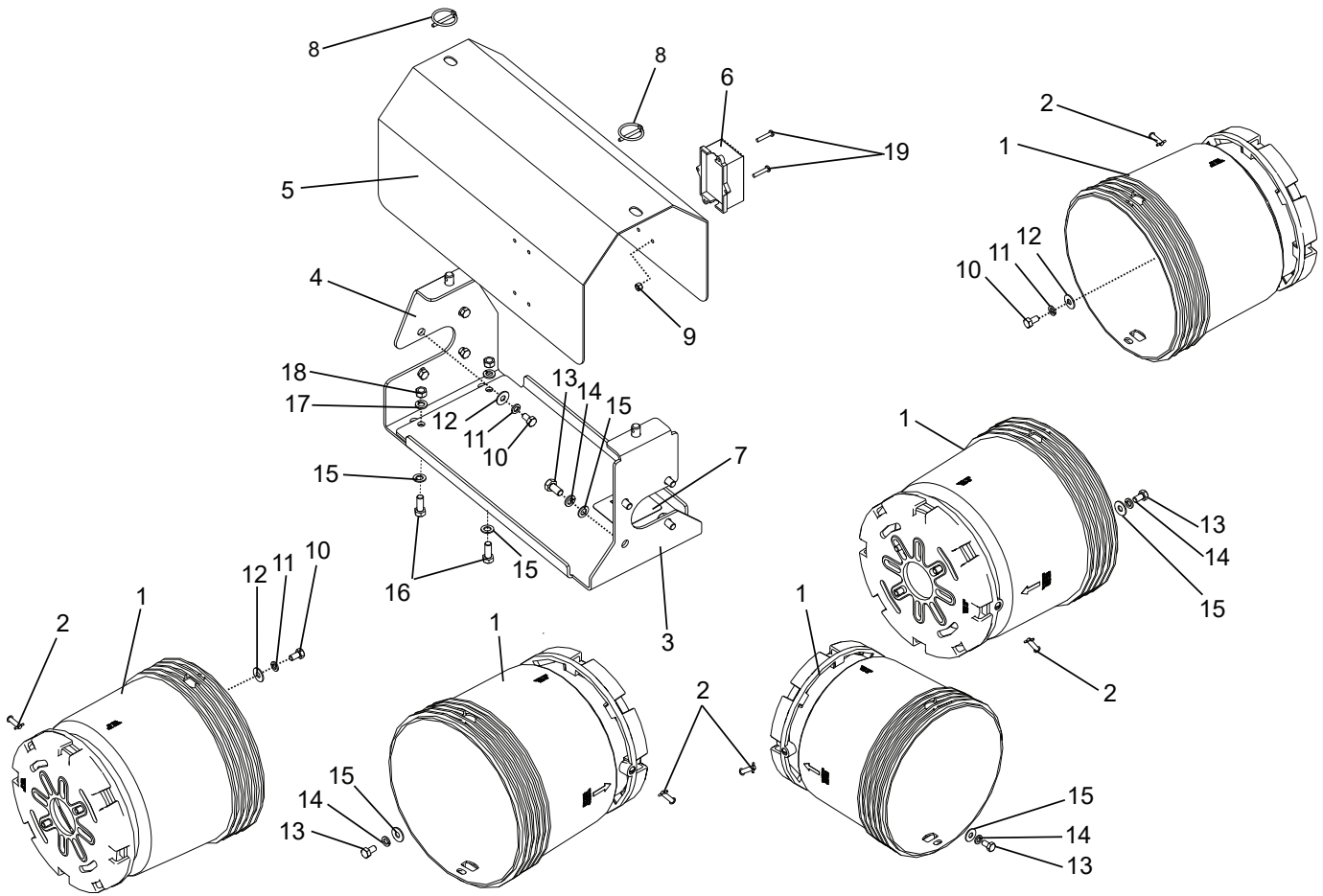


# BASE ASSEMBLY and RELATED PARTS



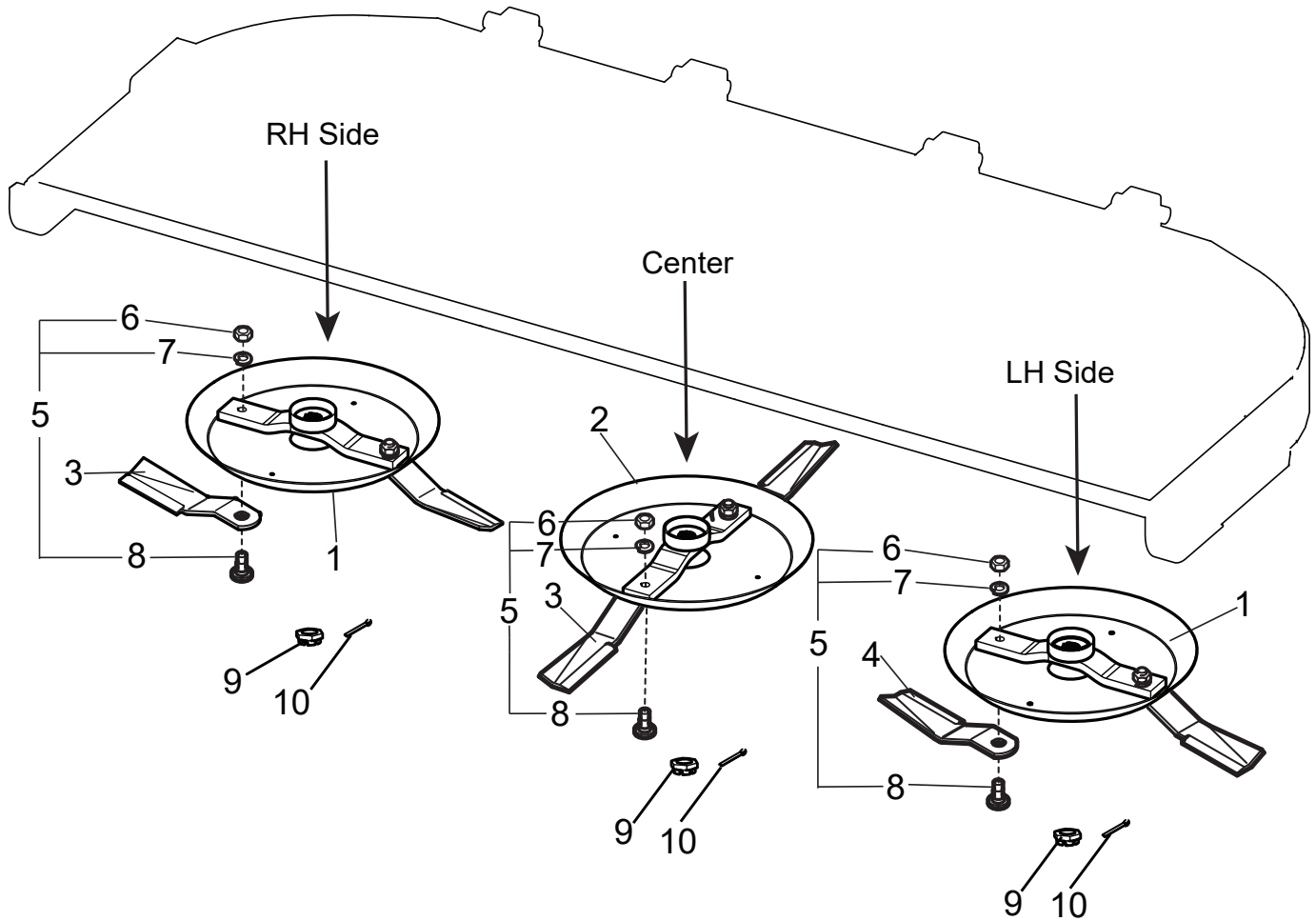
Item No.	Part No.	Description	Qty.	Item No.	Part No.	Description	Qty.
1	-----	Deck Weldment	1	26	50081404	Model Decal, 14215	1
2	50081472	Axle Assembly, Service Part	1	27	50031212	Amber Reflector, 2" x 9"	2
3	00790700BH	Gearbox Assembly, EZ160, 1:1.00 A	2	28	50031214	Red Reflector, 2" x 9"	6
4	00790761BH	Gearbox Assembly, EZ160, 1:1.00 O	1	29	50031219	Red-Orange Fluorescent Tape	4
5	50077451	Transfer Gearbox Assembly	1	30	D559	Decal, Genuine Bush Hog Parts	1
6	44065	Capscrew, 3/4" x 2-3/4" G5 ZP	18	31	D614	Decal, Danger- Do Not Operate	4
7	20299	Locknut, 3/4" Flng Gr G ZP	18	32	91443	Decal, Important	1
8	44103BH	Capscrew, M16 x 2" x 40" G8.8 ZP	4	33	D547	Decal, Danger	1
9	19486	Lockwasher, 5/8" CP	4	34	D548	Decal, Warning	1
10	20748	Flatwasher, 5/8" SAE ZP	4	35	D553	Decal, Warning	1
11	50040391	Removable Skid	2	36	D581	Decal, Lubrication Chart	1
12	50040394	LH Removable Skid	1	37	D813	Decal, Danger, Multi-Lingual	1
13	50040393	RH Removable Skid	1	38	D549	Decal, Danger/Operation	1
14	44928BH	#3 HD Plow Bolt 3/8" x 1-1/2" G5	10	39	D552	Decal, Blade Rotation, CW	1
15	15915BH	Flatwasher, 3/8" ZP	10	40	D551	Decal, Blade Rotation, CCW	2
16	15812	Lockwasher, 3/8" CP	10	41	D546	Decal, Danger, Missing Guard	6
17	8151200	Hex Nut, 3/8" CP	10	42	50081397	Decal, Bush Hog	2
18	50074735	Cable Clamp	5	43	D454	Decal, Danger (Crushing Hazard)	1
19	20187	Capscrew, 1" x 10" G5 ZP	4	44	1160807	Capscrew, 1/4" x 7/8" G5 ZP	2
20	20376	Flatwasher, 1" SAE ZP 1-1/16" ID	8	45	2438621	SMV Mouting Bracket	1
21	91507	Bushing, Strongback	4	46	15531BH	Hex Nut, 1/4" CP	2
22	9163200	Locknut, 1" Gr.C CP	4	47	94359	SMV Sign	1
23	50074259	Decal, Made in USA	1	48	50035829	Owners Manual Tube	1
24	20325	Roll Pin, 1/4" x 1-3/4"	2	49	50083384	Blade Bolt Access Cap	3
25	88983	Pin	1	-	50081469	Decal Kit (consists of items 23, 26-43)	1

# DRIVELINE SHIELDING



Item No.	Part No.	Description	Qty.
1	50075573	Locking Shield Assembly, Extended	5
2	50075575	Turn Fastener, 1/4"	5
3	50081471	Center Shield Assembly	1
4	50070528	Rear Shield Support Weldment	1
5	50081385	Shield, Driveshaft	1
6	50072057	Enhance Module	1
7	D546	Decal, Danger - Missing Guard	1
8	69391	Lynch Pin	2
9	44520BH	Locknut, #10 CP	2
10	90560	M8 x 1.25 x 15 G8.8 W/Patch	12
11	44311BH	Lockwasher, M8 ZP	12
12	15907BH	Flatwasher, 5/16" ZP	12
13	50018166	M10 x 1.5 x 20 G8.8 W/Patch	16
14	44198	Lockwasher, M10 ZP	16
15	15830	Flatwasher, 3/8" SAE ZP	18
16	20034	Capscrew, 3/8" x 1" G5 ZP	2
17	15812	Lockwasher, 3/8" CP	2
18	8151200	Hex Nut, 3/8" CP	2
19	-----	Slit Pn HD Mach Screw #10 x 1"	2

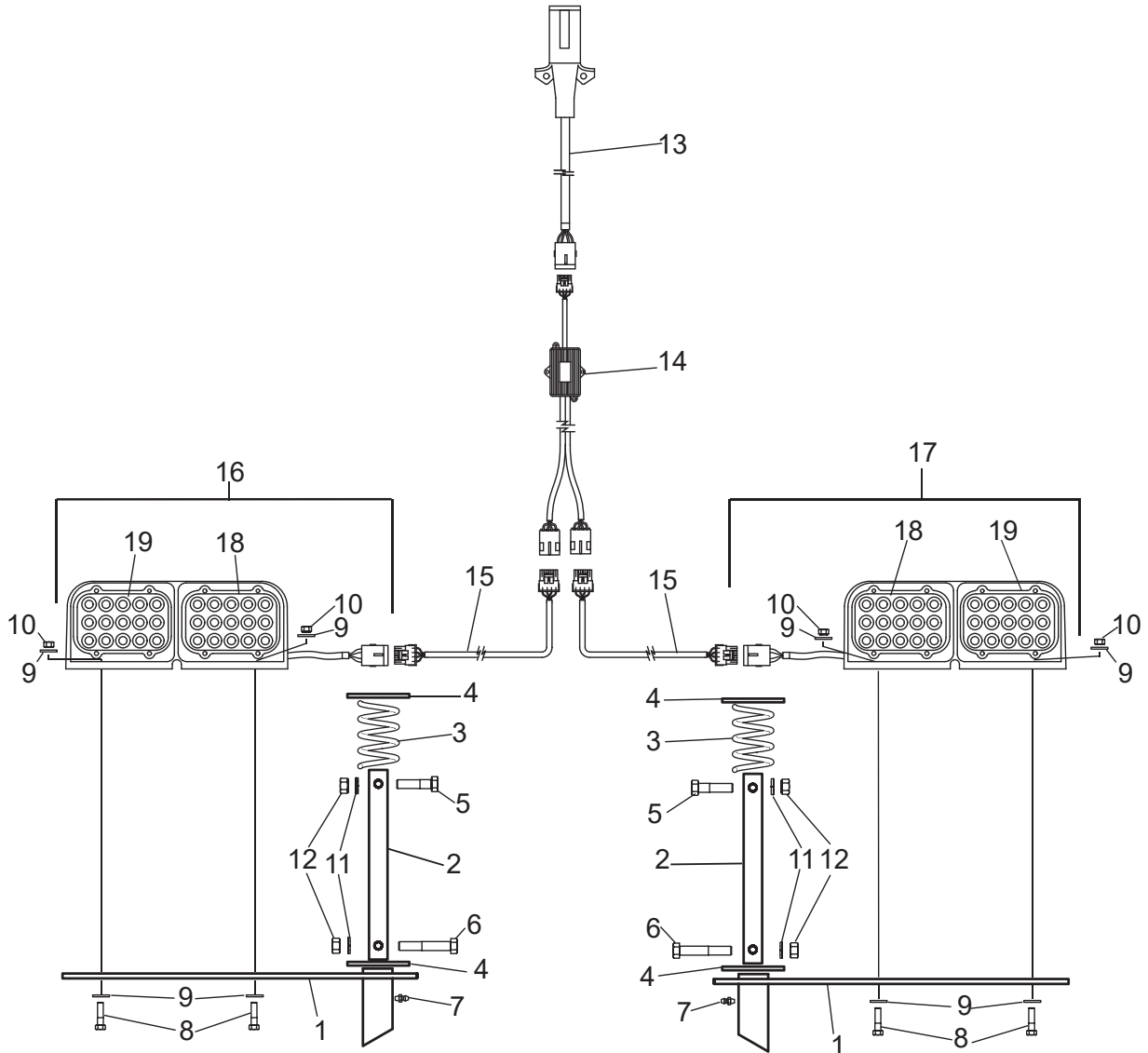
# BLADES AND BLADE HOLDERS



Item No.	Part No.	Description	Qty.
1	50076564	Pan Weldment, 6'	2
2	50076881	Pan Weldment, 27.50'	1
3	91197	Blade, CCW	4
4	91198	Blade, CW	2
5	63607	Blade Bolt Kit	6
6	252BH	Jamnut, 1-1/8"	6
7	20322	Lockwasher, 1-1/8"	6
8	7919BH	Blade Bolt	6
9	70418	Castle Nut, M36 x 3	3
10	00786155	Cotter Pin, M6 x 65MM	3

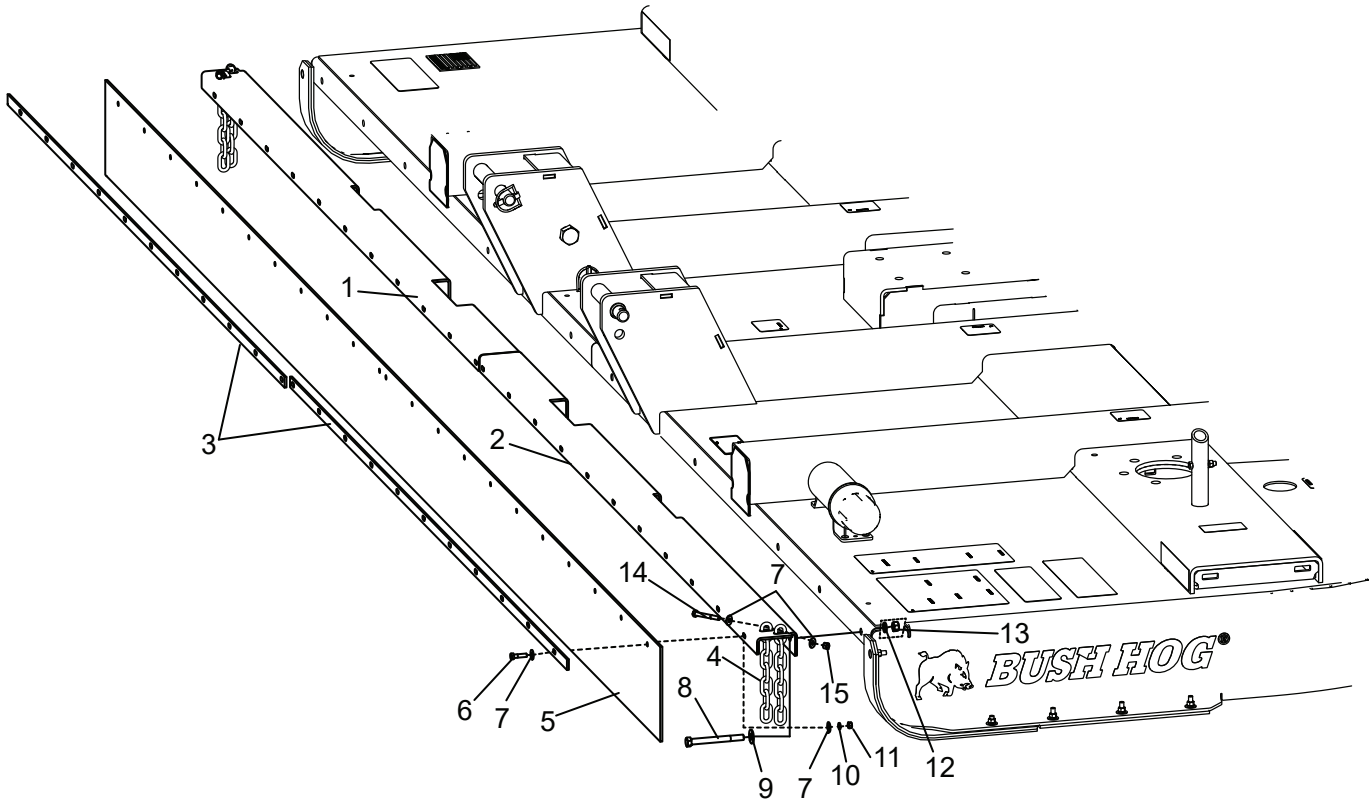


## LED LIGHT KIT and RELATED PARTS



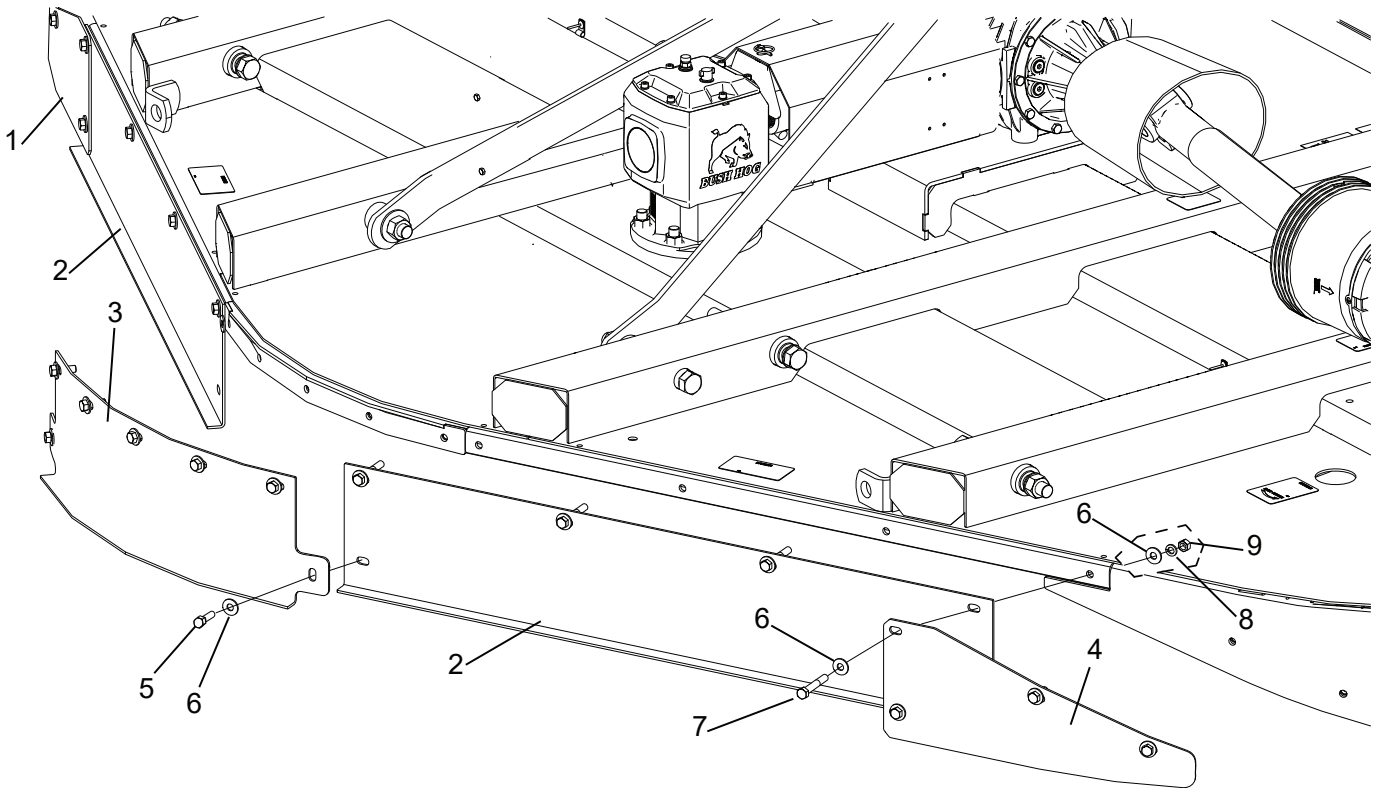
Item No.	Part No.	Description	Qty.	Item No.	Part No.	Description	Qty.
1	50076973	Pivot Weldment	2	11	15812	Lockwasher 3/8"	4
2	-----	Tube	2	12	8151200	Hex Nut 3/8"	4
3	50050993	Spring	2		<b>50076673</b>	<b>Light Kit Assy.</b>	<b>1</b>
4	20376	Flatwasher 1" SAE	4	13	50074721	Main Harness 7 Pin, 16' Long	1
5	20881	Capscrew 3/8" x 1-1/2"	2	14	50072057	Enhancer Module and Harness	1
6	20048	Capscrew 3/8" x 2-1/4"	2	15	50074725	Wishbone Harness (8' Long)	2
7	449BH	Grease Fitting	2	16	50072059	Lamp Assy. (Left)	1
8	19114BH	Capscrew 1/4" x 1-1/4"	8	17	50072060	Lamp Assy. (Right)	1
9	15918BH	Flatwasher 1/4"	16	18	50072062	Red Lens	2
10	15608	Locknut 1/4"	8	19	50072063	Amber Lens	2

## FRONT BELTING



Item No.	Part No.	Description	Qty.
1	50081402	RH Front Belt Enclosure	1
2	50081403	LH Front Belt Enclosure	1
3	91200	Belt Cover	2
4	50017212	Chain, 7 Link Plated	4
5	50079005	Front Belt	1
6	15086BH	Capscrew, 5/16" x 1-1/4" G5 ZP	22
7	15907BH	Flatwasher, 5/16" CP	48
8	44030BH	Capscrew, 1/2" x 5" G5 ZP	10
9	15916	Flatwasher, 1/2" ZP	10
10	15808	Lockwasher, 5/16" CP	22
11	15528	Hex Nut, 5/16" CP	22
12	15806	Lockwasher, 1/2" CP	10
13	8151600	Hex Nut, 1/2" CP	10
14	20504	Capscrew, 5/16" x 2-1/2" G5 ZP	2
15	15602BH	Locknut, 5/16" GRC ZP	2

## REAR METAL BAND

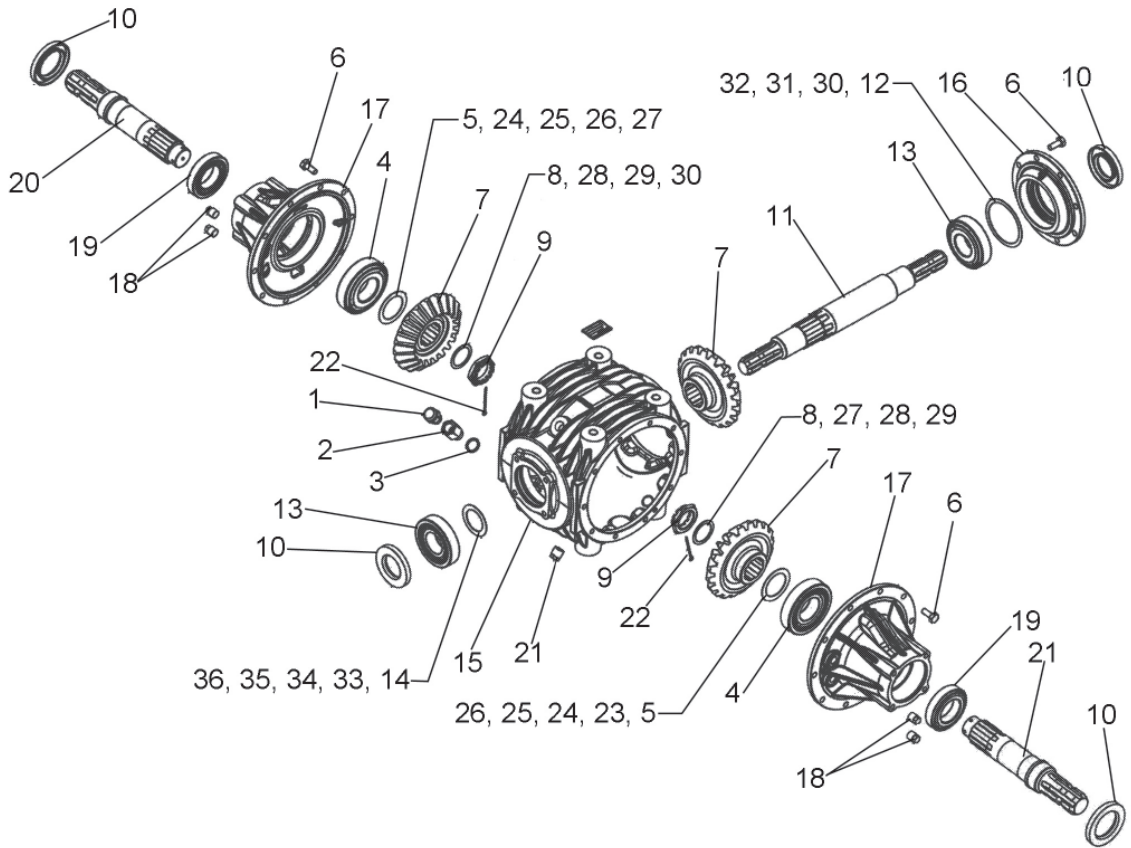


Item No.	Part No.	Description	Qty.
1	50081422	LH Rear Band	1
2	50081377	Rear Band	2
3	50081379	Center Rear Band	1
4	50081421	RH Rear Band	1
5	15093	Capscrew, 1/2" x 1-1/2" G5 ZP	13
6	15916	Flatwasher, 1/2" ZP	52
7	1161632	Capscrew, 1/2" x 3-1/4" G5 ZP	8
8	15806	Lockwasher, 1/2" CP	21
9	8151600	Hex Nut, 1/2" CP	21



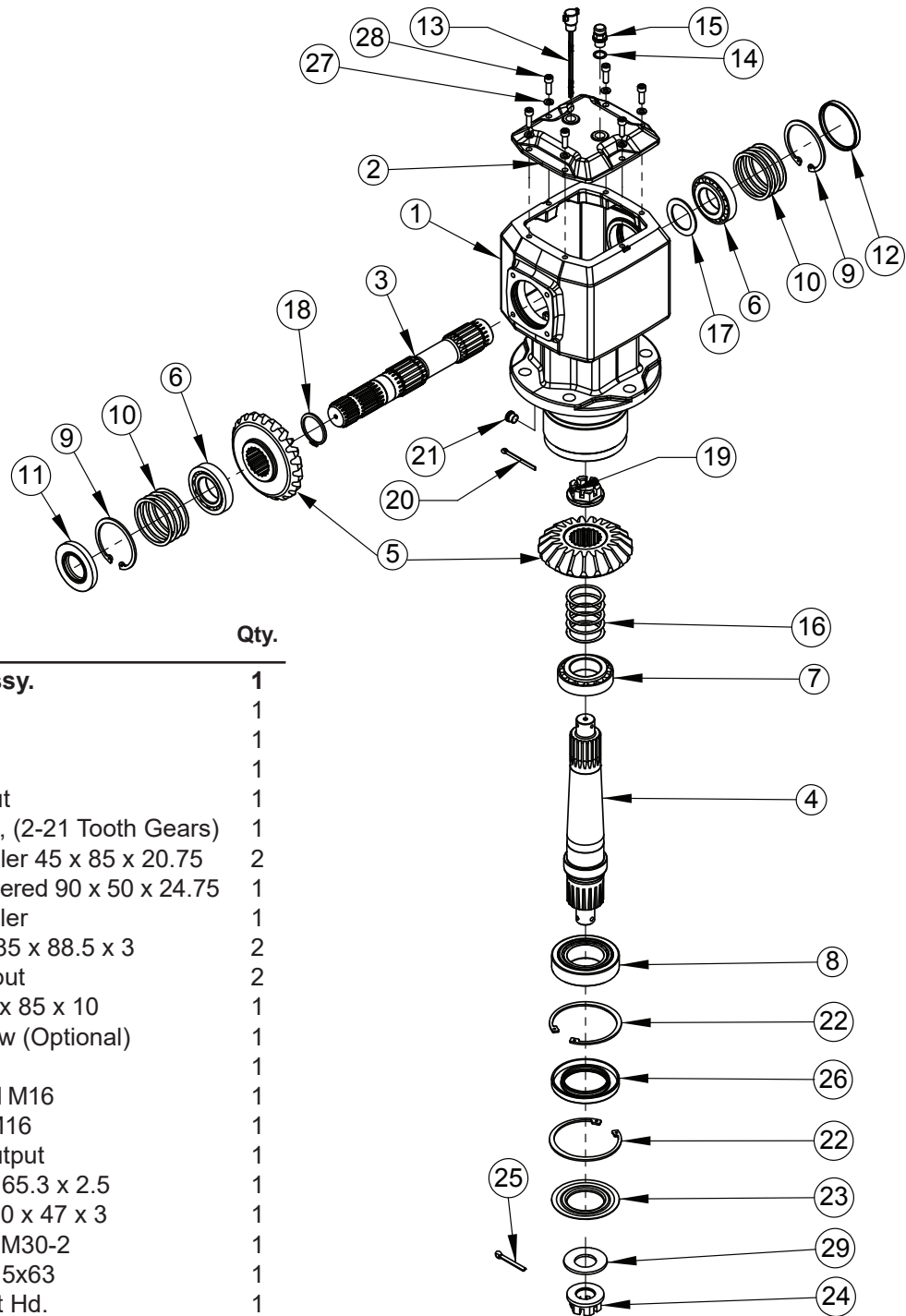


## TRANSFER GEARBOX ASSY. 1000 RPM (1:1.00)



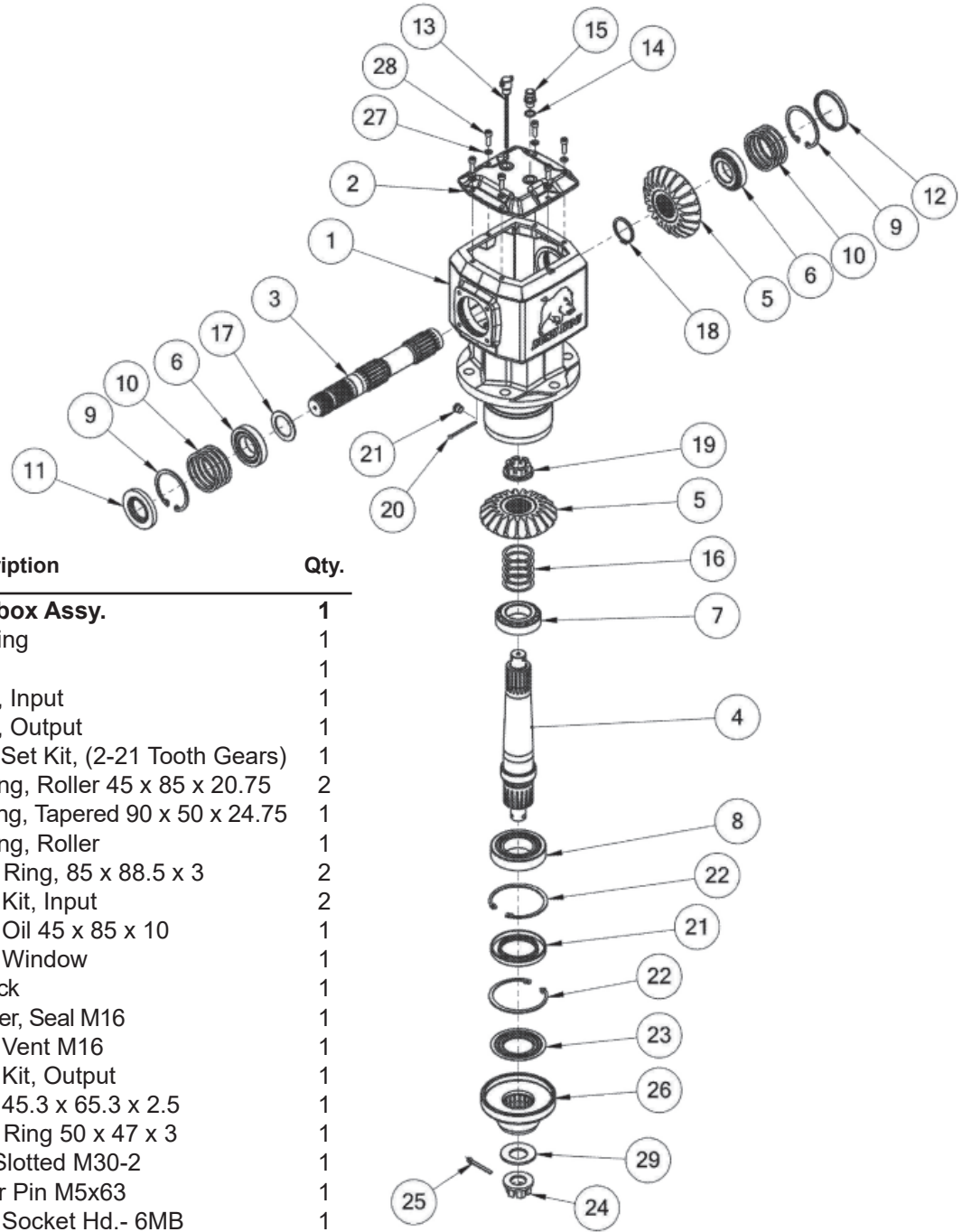
Item No.	Part No.	Description	Qty.	Item No.	Part No.	Description	Qty.
	<b>50077451</b>	<b>Transfer Gearbox Assembly</b>	<b>1</b>	19	70800	Bearing, 30210	2
1	50078575	Oil Filler Plug 1/2" Gas	1	20	50078583	Shaft 1-3/4" Z20	1
2	50078576	Oil Plug Extension 1/2" Gas	1	21	50078584	Plug, 1/2" Gas	1
3	50078577	Copper Washer	1	22	70585	Cotter Pin, B4 x 60	2
4	70940	Bearing 30310	2	23	70345BH	Shim (50.3 x 70.3 x 0.5)	1
5	70344	Shim (50.3 x 70.3 x 0.3)	2	24	70346BH	Shim (50.3 x 70.3 x 1)	1
6	70269	Bolt, M10 x 25 8.8	28	25	70347	Shim (50.3 x 70.3 x 4)	1
7	50078578	Gear Z20, M7.8	3	26	-----	Shim (50.3 x 70.3 x 2.5)	1
8	70340	Shim, (40.3 x 51.5 x 1)	2	27	70337	Shim (40.3 x 51.5 x 3)	1
9	70586	Castle Nut M40 x 1.5	2	28	70338	Shim (40.3 x 51.5 x .4)	1
10	50068116	Oil Seal, 45 x 85 x 10	4	29	70339	Shim (40.3 x 51.5 x .5)	1
11	50078579	Shaft 20- 1-3/4" Z20	1	30	-----	Shim (85.3 x 99.7 x .4)	1
12	70386	Shim (85.3 x 99.7 x .3)	1	31	70388	Shim (85.3 x 99.7 x 5)	1
13	50053364	Bearing 3030	2	32	70389	Shim (85.3 x 99.7 x 1)	1
14	70348	Shim (45.3 x 65.36 x .3)	1	33	70349BH	Shim (45.3 x 65.3 x .4)	1
15	50078580	Casing	1	34	70350	Shim (45.3 x 65.3 x .5)	1
16	50078581	Cover	1	35	70351	Shim (45.3 x 65.3 x 1)	1
17	50078582	Extension	2	36	70740	Shim (45.3 x 65.3 x 1)	1
18	50046983	Plug 3/8" Gas	4				

## GEARBOX ASSEMBLY, OUTBOARD RIGHT HAND AND CENTER REAR



Item No.	Part No.	Description	Qty.
	<b>00790700BH</b>	<b>Gearbox Assy.</b>	<b>1</b>
1	-----	Housing	1
2	00790718	Cap	1
3	00790719	Shaft, Input	1
4	00790720	Shaft, Output	1
5	00790735	Gear Set Kit, (2-21 Tooth Gears)	1
6	70796	Bearing, Roller 45 x 85 x 20.75	2
7	50025423	Bearing, Tapered 90 x 50 x 24.75	1
8	00777095	Bearing, Roller	1
9	00755618	Snap Ring, 85 x 88.5 x 3	2
10	00791066	Shim Kit, Input	2
11	50068116	Seal, Oil 45 x 85 x 10	1
12	50074092	Sight Window (Optional)	1
13	00790732	Dipstick	1
14	00790983	Washer, Seal M16	1
15	00790985	Plug, Vent M16	1
16	00790939	Shim Kit, Output	1
17	00755632	Shim 45.3 x 65.3 x 2.5	1
18	2516460	Snap Ring 50 x 47 x 3	1
19	00790937	Nut, Slotted M30-2	1
20	70499	Cotter Pin M5x63	1
21	00791032	Plug, Socket Hd.	1
22	50025469	Snap Ring 110mm	2
23	00790731	Shield, Protective	1
24	70418	Nut, Castle M36 x 3	1
25	00786155	Cotter Pin M6 x 65	1
26	00790740	Seal, Oil 70 x 110 x 12	1
27	44311BH	Washer, Lock M8	6
28	00790896	Bolt, Socket Hd. M8-1.25 x 20	6
29	00786157	Washer, Spring 36mm	1

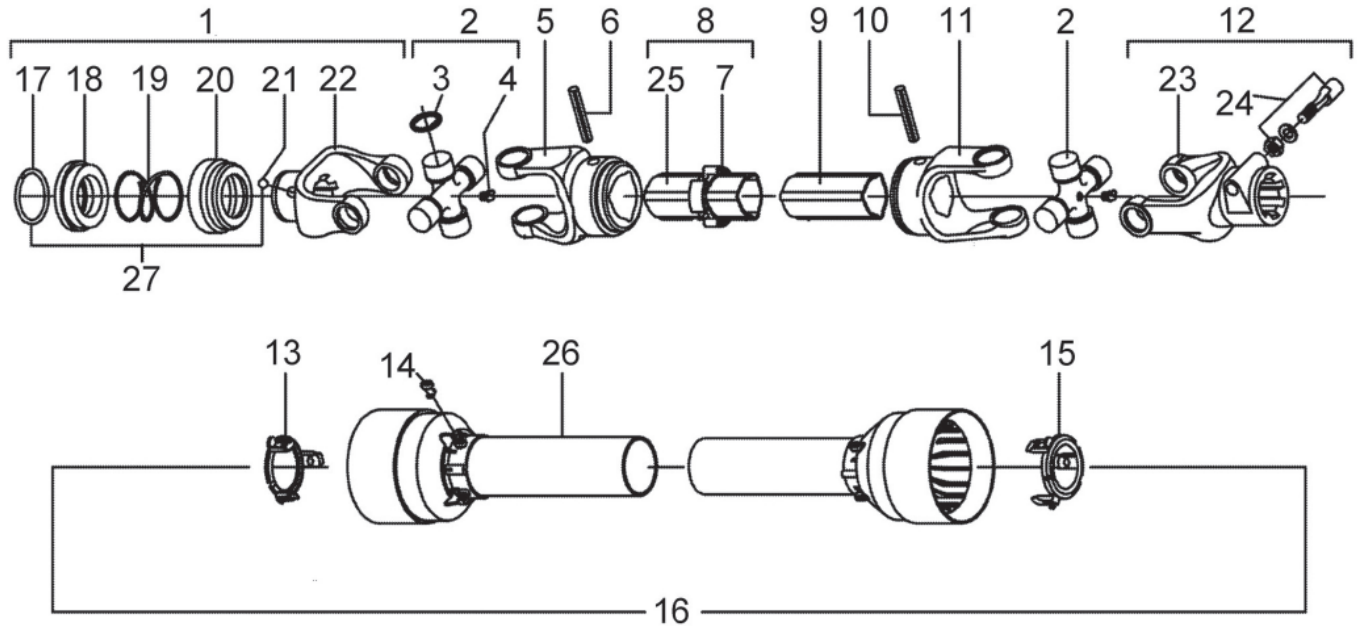
## GEARBOX ASSEMBLY, OUTBOARD LEFT HAND



Item No.	Part No.	Description	Qty.
	<b>00790761BH</b>	<b>Gearbox Assy.</b>	<b>1</b>
1	-----	Housing	1
2	00790718	Cap	1
3	00790719	Shaft, Input	1
4	00790720	Shaft, Output	1
5	00790735	Gear Set Kit, (2-21 Tooth Gears)	1
6	70796	Bearing, Roller 45 x 85 x 20.75	2
7	50025423	Bearing, Tapered 90 x 50 x 24.75	1
8	00777095	Bearing, Roller	1
9	00755618	Snap Ring, 85 x 88.5 x 3	2
10	00791066	Shim Kit, Input	2
11	50068116	Seal, Oil 45 x 85 x 10	1
12	50074092	Sight Window	1
13	00790732	Dipstick	1
14	00790983	Washer, Seal M16	1
15	00790985	Plug, Vent M16	1
16	00790939	Shim Kit, Output	1
17	00755632	Shim 45.3 x 65.3 x 2.5	1
18	2516460	Snap Ring 50 x 47 x 3	1
19	00790937	Nut, Slotted M30-2	1
20	70499	Cotter Pin M5x63	1
21	00791032	Plug, Socket Hd.- 6MB	1
22	50025469	Snap Ring, Internal 110mm	2
23	00790731	Shield, Protective	1
24	70418	Washer, Spring 36mm	1
25	00786155	Cotter Pin M6 x 65mm	1
26	-----	Hub, EZ160	1
27	44311BH	Washer, Lock M8	6
28	00790896	Bolt, Socket Hd. M8-1.25 x 20	6
29	00786157	Washer, Spring 36mm	1
30	00790740	Seal, Oil 70 x 110 x 12	1

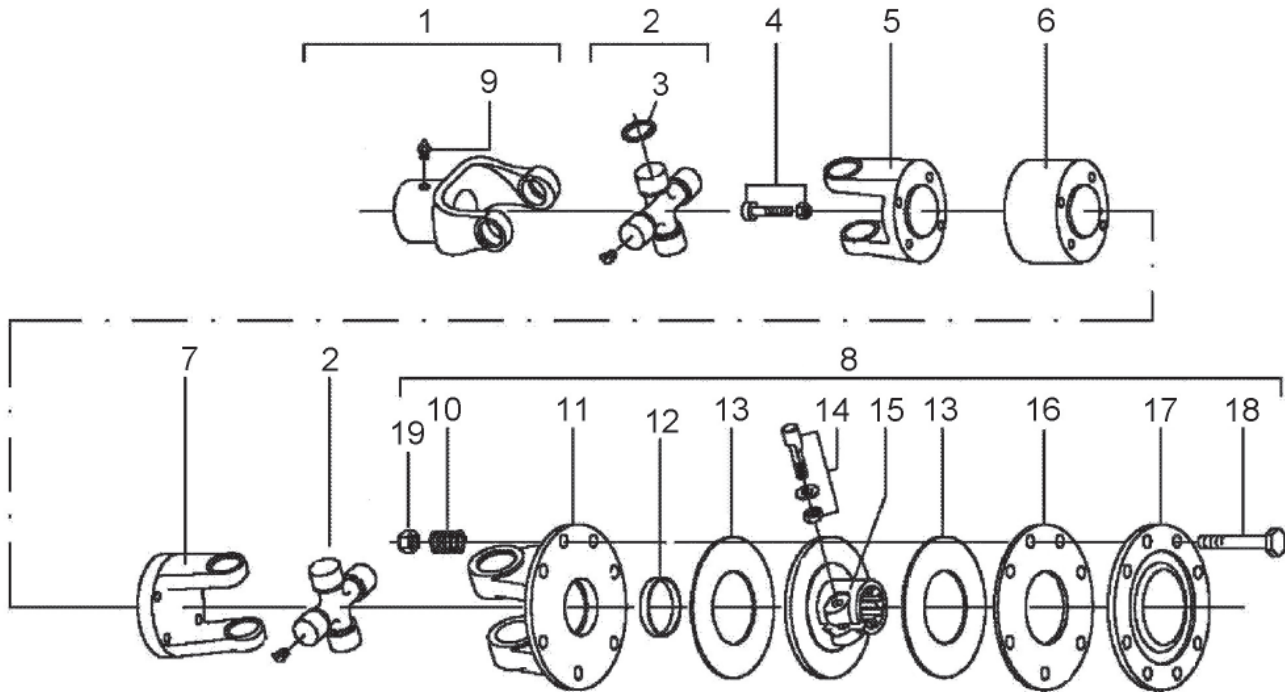


## 93064 DRIVESHAFT ASSEMBLY 1-3/8" Z21, ASAE 5 1000 RPM



Item No.	Part No.	Description	Qty.	Item No.	Part No.	Description	Qty.
	93064	Driveline Assembly	1	14	87992	Bolt	6
1	76805	Complete Collar Yoke C13	1	15	76245	Guard Ret.Collar for Inner Tube	1
2	64693	Cross Journal Set	2	16	76277	Compl. Guard W/instruct Manual	1
3	-----	Circlip	8	17	-----	Outer Circlip	1
4	63956	Grease Nipple	2	18	-----	Sliding Sleeve Collar	1
5	78134	Outer Yoke	1	19	-----	Spring	1
6	67108	Roll Pin for Outer Tube	1	20	-----	Fixed Sleeve	1
7	76247	Bush With Grease Fitting	1	21	-----	Ball Ø 1/2"	3
8	76275	Complete Outer Tube	1	22	-----	Yoke C13	1
9	76276	Inner Tube	1	23	-----	Yoke C155	1
10	67085	Roll Pin For Inner Tube	1	24	76247	Tapered Pin Set 1-3/4"	1
11	67086	Inner Yoke	1	25	78786	Danger Decal, Outer Tube	1
12	76239BH	Complete Yoke	1	26	78608	Danger Decal, Outer Shield	1
13	76244	Guard Ret.Collar For Outer Tube	1	27	50017480	Ball Collar Kit, 1-3/8"	1

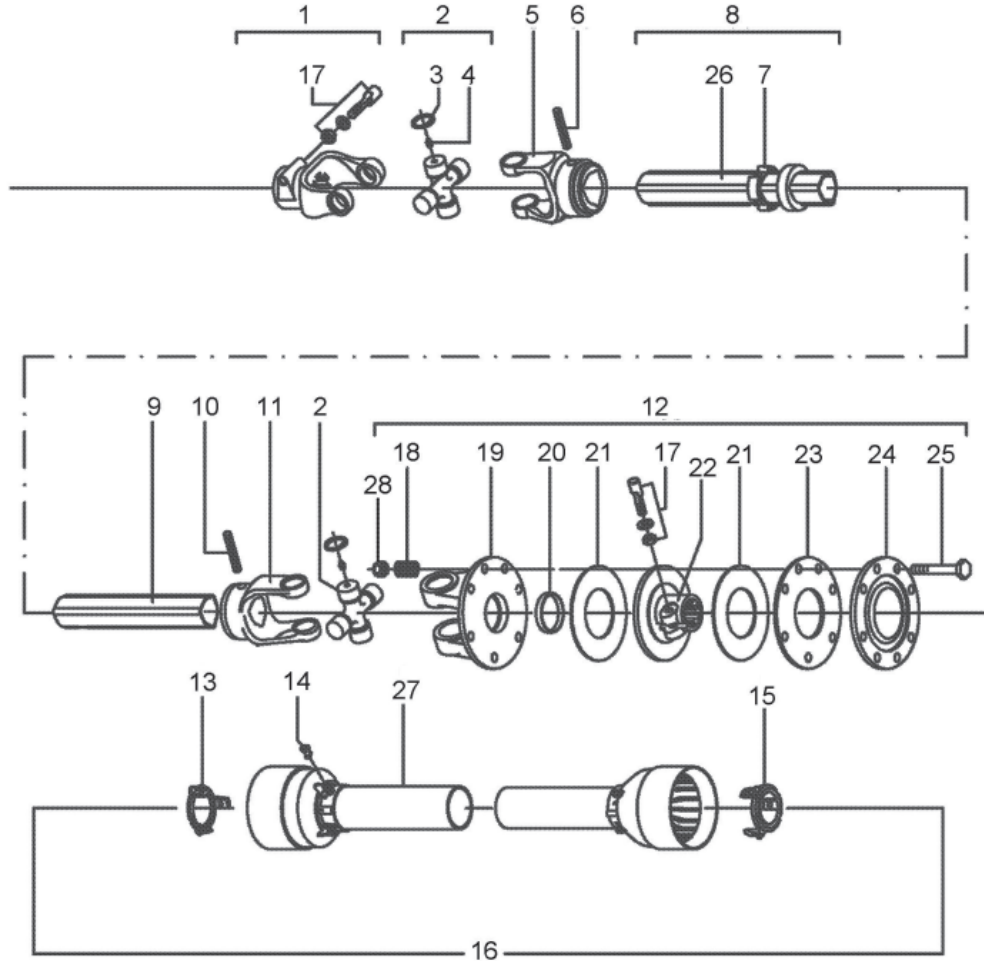
**50071438**  
**DRIVESHAFT ASSEMBLY W/CLUTCH**  
**1-34" Z20, ASAE 4**  
**1000 RPM**



Item No.	Part No.	Description	Qty.
	<b>50071438</b>	<b>Driveshaft Assembly</b>	<b>1</b>
1	76782	Yoke W/Grease Nipple	1
2	50060543	Cross Journal Set	2
3	-----	Circlip	8
4	50072442	Bolt & Nut M12 x 80	4
5	76914	Flanged Yoke Male	1
6	50072443	Retaining Washer	1
7	76915	Flanged Yoke Female	1
8	76308	Complete Disc Clutch F29	1
9	63946	Grease Nipple	1
10	76080	Spring	8
11	76164	Flanged Yoke	1
12	76082	Bush	1
13	76083	Lining Ring	2
14	76247	Tapered Pin Set, 1-3/4"	1
15	76309	Clutch Support F29	1
16	76085	Inner Plate	1
17	76086	Pressure Plate	1
18	44155BH	Capscrew, M10 x 1.5 x 85 ZP	8
19	44154BH	Locknut, M10 x 1.5 x C9 CP	8



## 50081321 DRIVESHAFT ASSEMBLY W/CLUTCH 1-34" Z20, ASAE 4 1000 RPM

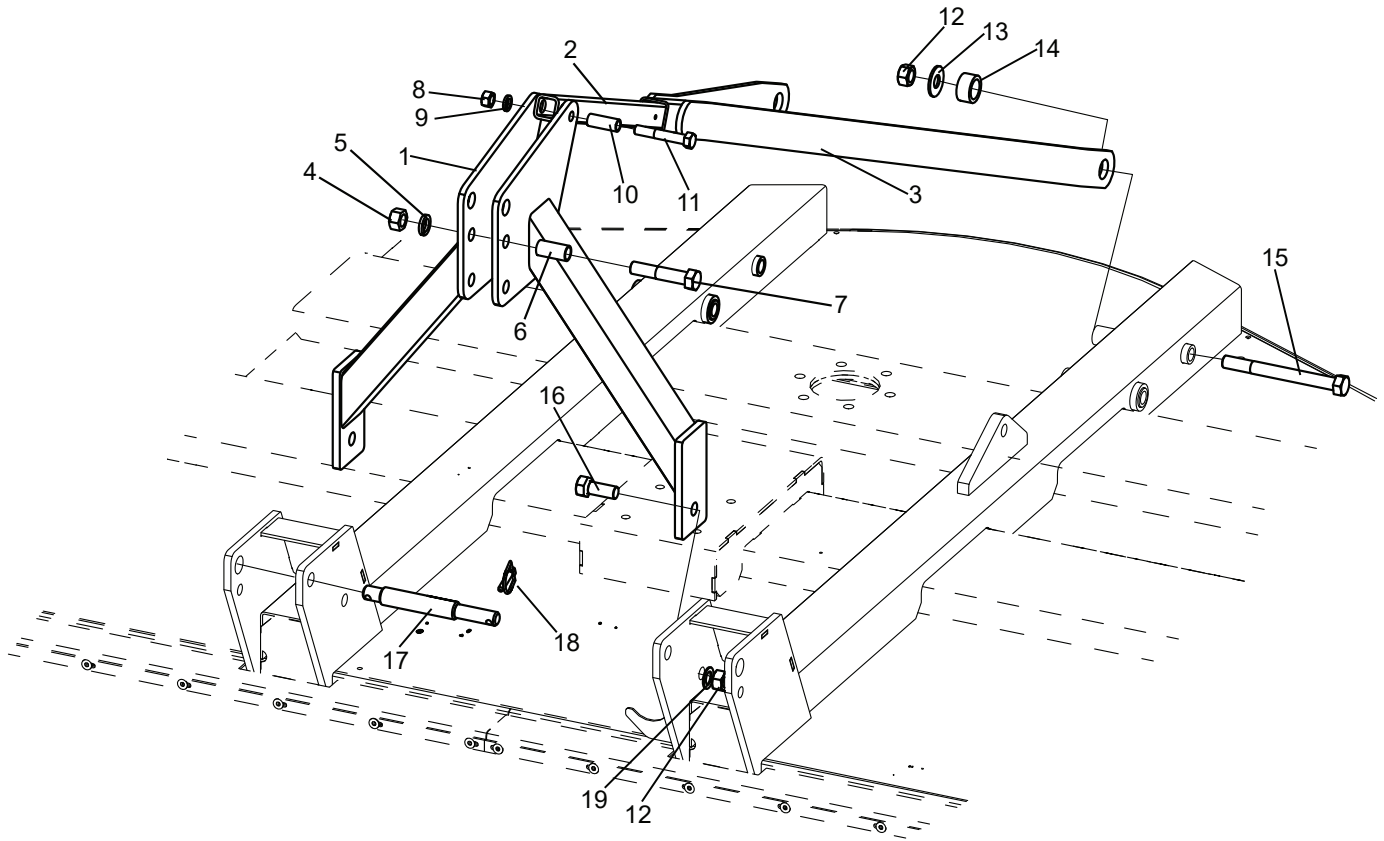


Item No.	Part No.	Description	Qty.	Item No.	Part No.	Description	Qty.
	50081321	Driveshaft Assembly	1	15	50056418	Guard Retaining Collar, Inner Tube	1
1	76422	Complete Yoke 155	1	16	50081668	Compl. Guard w/Instruct Manual	1
2	50060543	Cross Journal Set	2	17	76247	Tapered Pin Set 1-3/4"	2
3	-----	Circlip	8	18	76080	Spring	8
4	76335	Grease Nipple	2	19	76164	Flanged Yoke	1
5	66865	Outer Yoke	1	20	76082	Bush	1
6	66866	Roll Pin for Outer Tube	1	21	76083	Lining Ring	2
7	50064188	Bush W/Grease Fitting	1	22	76309	Clutch Support F49	1
8	50081666	Complete Outer Tube	1	23	76085	Inner Plate	1
9	50081667	Inner Tube	1	24	76086	Pressure Plate	1
10	66869	Roll Pin for Inner Tube	1	25	44155BH	Capscrew, M10 x 1.5 x 85	8
11	66870	Inner Yoke	1	26	78786	Danger Decal, Outer Tube	1
12	76308	Complete Disc Clutch	1	27	78608	Danger Decal, Outer Shield	1
13	50056417	Guard Retaining Collar, Outer Tube	1	28	44154BH	Locknut, M10 x 1.5 C9 CP	8
14	50056404	Bolt	6				





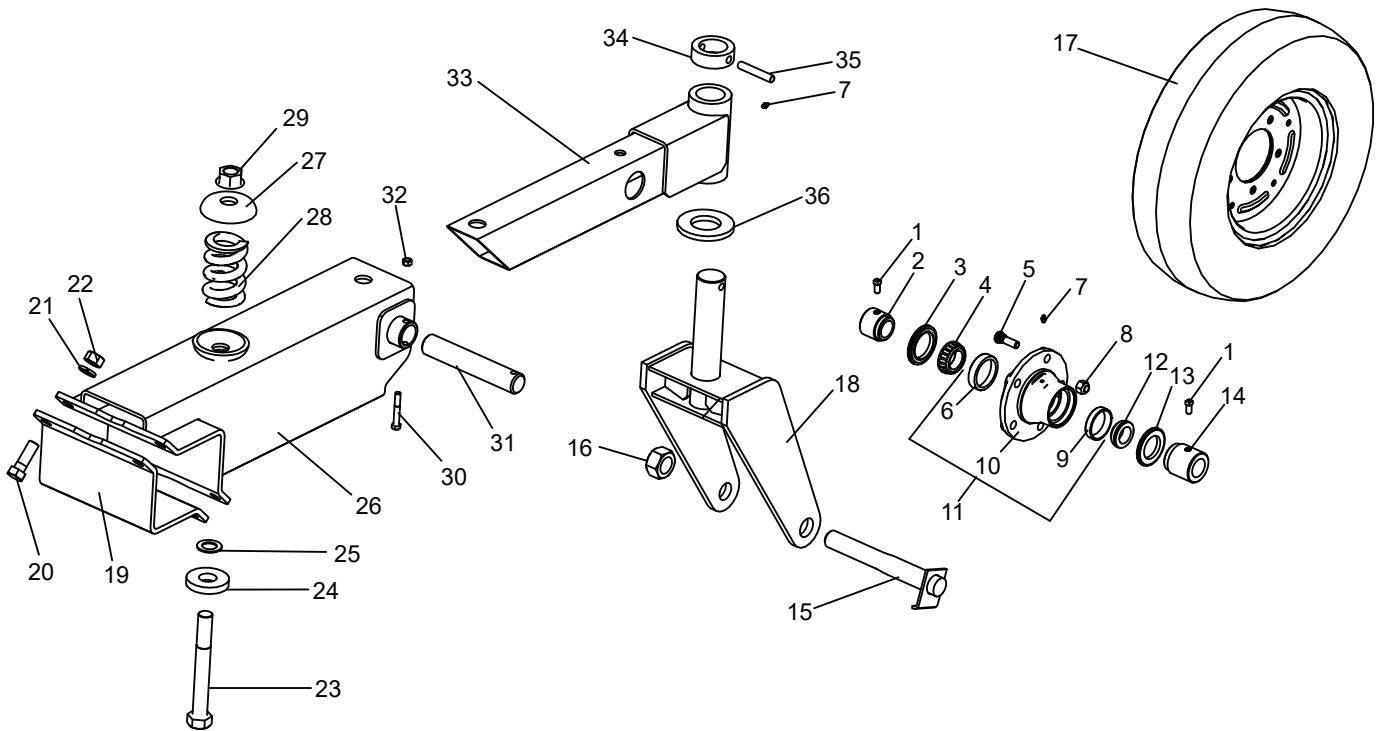
### 3 POINT LIFT HITCH



Item No.	Part No.	Description	Qty.
1	50079617	Mast Weldment	1
2	50079619	Slide Tube Weldment	1
3	50081400	Mast Link Weldment	1
4	19502	Hex Nut, 1 CP	1
5	15821	Lockwasher, 1 CP	1
6	90213	Top Bushing, A-Frame	1
7	19061	Capscrew, 1" x 5" G5 ZP	1
8	19517	Hex Nut, 3/4" CP	1
9	146	Lockwasher, 3/4" ZP	1
10	90212	Spacer, Mast	1
11	20264	Capscrew, 3/4" x 4-1/2" G5 ZP	1
12	9163200	Locknut, 1" GR C CP	4
13	15908BH	Flatwasher, 1" ZP	2
14	50081361	Bushing 2.25" x 1.625" x 1.50"	2
15	20187	Capscrew, 1" x 10" G5 ZP	2
16	20232BH	Capscrew, 1" x 2-1/2" G5 ZP	2
17	25G12545	Hitch Pin	2
18	20558BH	Lynch Pin 7/16" x 2"	2
19	20376	Flatwasher, 1" SAE ZP, 1-1/16" ID	2

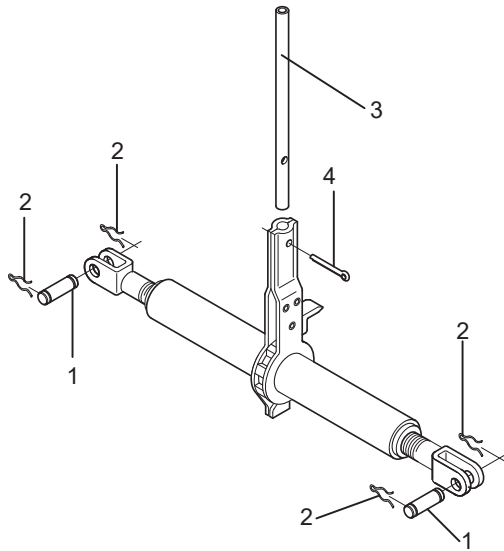


## TAILWHEEL ASSEMBLY



Item No.	Part No.	Description	Qty.	Item No.	Part No.	Description	Qty.
1	18141206	Setscrew, 3/8" x 3/4" GR 8	2	19	50079633	Axle Mounting Plate	1
2	1596BH	Spacer, Small	1	20	20176	Capscrew, 3/4" x 2-1/4" G8	4
3	7968	Seal, Triple Lip	1	21	146	Lockwasher, 3/4"	4
4	14-6-241	Bearing Cone	1	22	19517	Hex Nut, 3/4"	4
5	15545	Lug Bolt	5	23	20503	Capscrew 1" x 8" G5 ZP	1
6	14-6-242	Bearing Cup	1	24	91261	Rubber Cushion	1
7	449BH	Grease Fitting	2	25	20376	Flatwasher 1" SAE ZP 1-1/16" ID	1
8	15515BH	Lug Nut	5	26	50079669	Axle Arm Weldment	1
9	14-6-197	Bearing Cup	1	27	91152	Spring Cup	1
10	-----	Hub	1	28	50035301	Spring, Coil	1
11	1613BH	Hub Assembly (5-10)	1	29	44524BH	Locknut, Flng 1" GR.C	1
12	50076BH	Bearing Cone	1	30	20224	Capscrew, 3/8" x 2-1/2" G5 ZP	1
13	7967	Seal, Triple Lip	1	31	50081370	Pivot Pin, 1.50" x 8.40"	1
14	1595BH	Spacer, Large	1	32	20363	Locknut, 3/8" CP Center	1
15	1620BH	Spindle	1	33	50079927	Caster Arm Weldment	1
16	15521	Locknut, 1-1/4"	1	34	81467	Spacer	1
17	294SP	Wheel Assembly	1	35	52732BH	Spirol Pin, 1/2" x 3" HD Black	1
18	81464	Caster Weldment	1	36	1178	Washer Pivot Tube	1





### 1817SP RATCHET ASSEMBLY

Item No.	Part No.	Description	Qty.
	<b>1817SP</b>	<b>Ratchet Assy</b>	<b>1</b>
1	50028265	Pin	2
2	50028264	Clip Pin	4
3	-----	Handle	1
4	15474	Cotter Pin	1

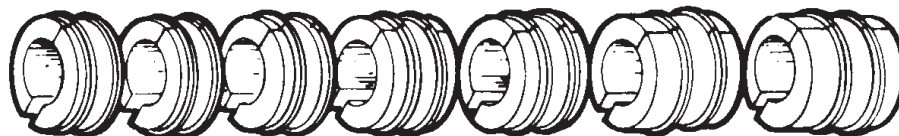
### HYDRUALIC HOSES & FITTINGS



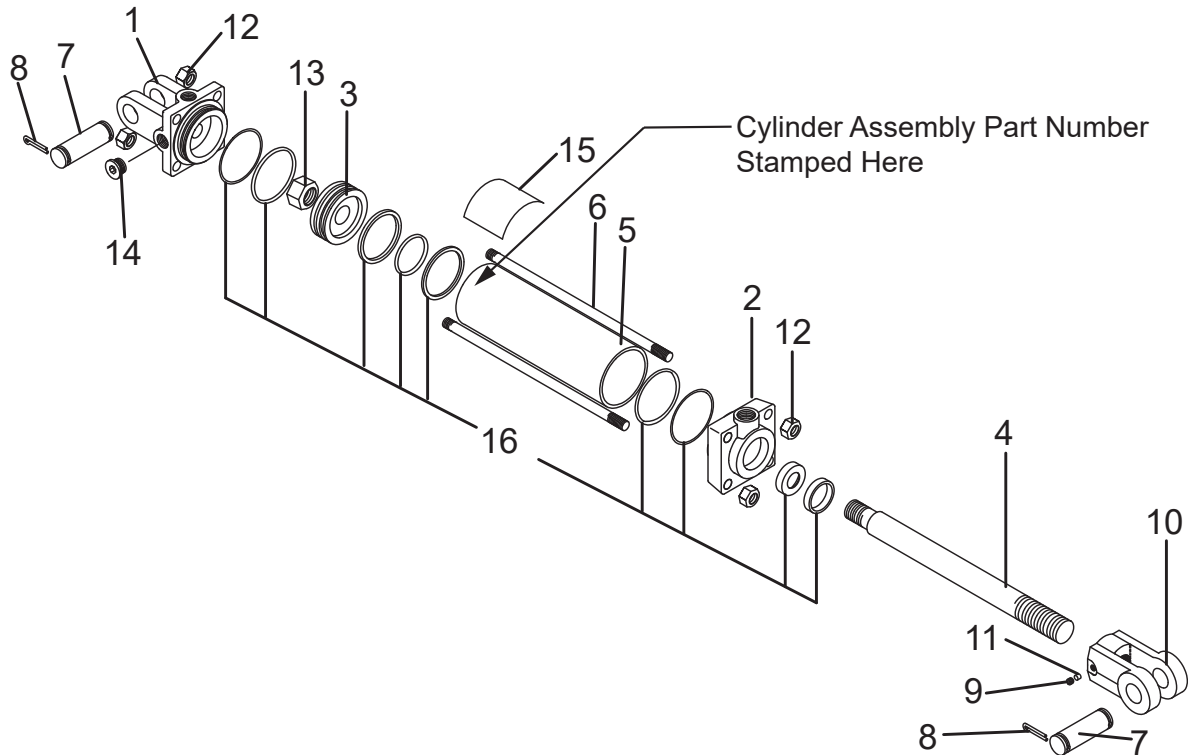
#### For Axle Cylinder

Item No.	Part No.	Description	Qty.
1	53340BH	Adaptor 9/16" JIC to 3/4" SAE	1
2	24-6-434	Adaptor 9/16" JIC to 1/2" NPT	1
3	14-40-98	90° Elbow 3/4" ORB to 9/16" JIC	1
4	62427	Hydraulic Hose 144"	1
5	86500	Breather Plug	1

### 63451 STOP COLLAR KIT

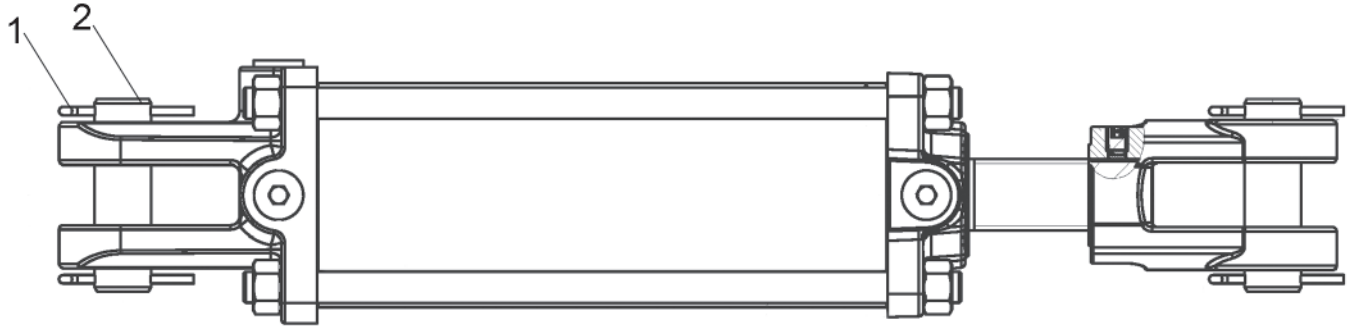


**99565**  
**HYDRAULIC CYLINDER**  
**Mfd. by Monarch**  
**3.5" Bore x 8" Stroke 1.25 Rod Dia.**  
**3/4" - 16 ORB Ports**



Item No.	Part No.	Description	Qty.
1	95429	Clevis Cap	1
2	95430	Rod Cap	1
3	50017628	Piston	1
4	95431	Rod 1.25" Dia.	1
5	95426	Cylinder Tube	1
6	95427	Tie Rod	4
7	95425	Pin 1" Dia.	2
8	21020614	Cotter Pin 3/16" x 1 1/2"	4
9	95433	Thread Lock	1
10	95428	Rod Clevis 1.25" x 1"	1
11	95422	Set Screw 3/8" x 1/2 Knurled	1
12	95420	Hex Nut 5/8" UNF	8
13	-----	Hex Nut 1"-14	1
14	95435	Plug 3/4"	1
15	50042072	Caution Decal	1
<b>16</b>	<b>50017623</b>	<b>Seal Kit</b>	<b>1</b>

**50081896**  
**HYDRAULIC CYLINDER**  
**Mfd. by Bailey**  
**3.5" Bore x 8" Stroke 1.25 Rod Dia.**



Item No.	Part No.	Description	Qty.
	<b>50081896</b>	<b>Hydraulic Cylinder Assembly</b>	<b>1</b>
1	21020614	Cotter Pin	4
2	95425	Pin, 1" Dia.	2
3	50082030	Seal Kit for 3.50" Bore (item not shown)	1









**BUSH HOG<sup>®</sup>**

2501 Griffin Ave.  
Selma, AL. 36703