



RTXG SERIES ROTARY TILLERS

Models
RTX85G

S/N 10444 & Above

RTX92G

S/N 10723 & Above

Revised 01/24

PARTS MANUAL SECTION 46A



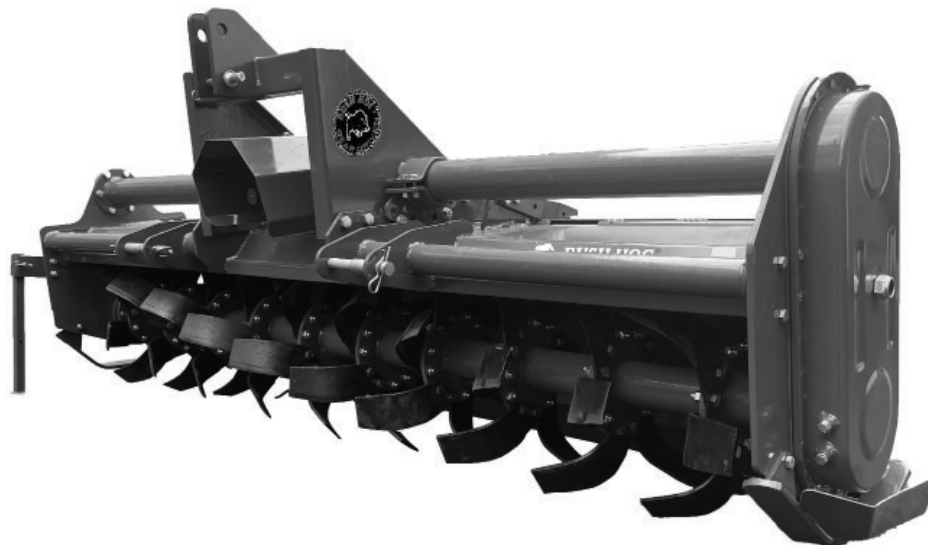
An Operator's Manual was shipped with the equipment. The Operator's Manual is an integral part of the safe operation of this machine and must be maintained with the unit at all times. **READ, UNDERSTAND, and FOLLOW** the Safety and Operation Instructions contained in this manual before operating the equipment. If the Operator's Manual is not with the equipment, contact your dealer or Bush Hog to obtain a copy before operating the equipment.

Safety Video

Important Operating and Safety Instructions are found in the Mower Safety Video that can be instantly accessed on the Internet at:
www.algqr.com/bve



www.algqr.com/bve



BUSH HOG®

2501 Griffin Ave.

Selma, Al. 36703

Parts Ordering 1-800-304-2836

www.bushhog.com

ATENCIÓN!

LEA EL INSTRUCTIVO

Si No Lee Ingles, Pida Ayuda a Alguien
Que Si Lo Lea Para Que le Traduzca las
Medidas de Seguridad.



A MEMBER OF THE
ALAMO GROUP
ALWAYS ON THE CUTTING EDGE®

© 2023 Alamo Group Inc.

PARTS ORDERING GUIDE

The following instructions are offered to help eliminate needless delay and error in processing purchase orders for the equipment in this section.

1. The Parts Section is prepared in logical sequence and grouping of parts that belong to the basic machine featured in this manual. Part Numbers and Descriptions are given to help locate the parts and quantities required.
2. The Purchase Order must include the name and address of the person or organization ordering the parts, who should be charged, and if possible, the serial number of the machine for which the parts are ordered.
3. The Purchase Order must clearly list the quantity of each part, the complete and correct part number (be sure to include all periods), and the basic name of the part.
4. The Manufacturer reserves the right to substitute parts where applicable.
5. Some parts are unlisted items which are special production items not normally stocked and are subject to special handling. Request a quotation for such parts before sending a Purchase Order.
6. The Manufacturer reserves the right to change prices without prior notice.



For maximum safety and to guarantee optimum product reliability, always use genuine **BUSH HOG** Parts. The use of inferior replacement parts may cause premature or catastrophic failure which could result in serious injury or death. Direct any questions regarding parts to:

BUSH HOG
2501 Griffin Ave.
Selma, AL. 36703
www.bushhog.com
Contact Us
1-800-304-2836



BUSH HOG®

To The Owner/Operator/Dealer





All implements with moving parts are potentially hazardous. There is no substitute for a cautious, safe-minded operator who recognizes the potential hazards and follows reasonable safety practices. The manufacturer has designed this implement to be used with all its safety equipment properly attached to minimize the chance of accidents.

BEFORE YOU START!

Read the safety messages on the implement and shown in your manual. Observe the rules of safety and common sense!

! DANGER

FAILING TO FOLLOW SAFETY MESSAGES AND OPERATING INSTRUCTIONS CAN CAUSE SERIOUS BODILY INJURY OR EVEN DEATH TO OPERATOR AND OTHERS IN THE AREA.

1. 	2. SEAT BELTS, ROPS NO RIDERS. 	3. SAFETY SHOES, HARD HAT, SAFETY GLASSES 	4. 
--	--	--	--

1. READ OPERATOR'S MANUAL CAREFULLY AND PAY ATTENTION TO SAFETY DECALS FOR TRACTOR AND TILLER THOROUGHLY TO AVOID MISUSE, ABUSE AND ACCIDENTS. PRACTICE BEFORE OPERATING.

2. OPERATE ONLY WITH ROPS AND FASTENED SEAT BELT TO AVOID INJURY AND POSSIBLE CRUSHING DEATH FROM OVERTURNING. DO NOT ALLOW RIDERS ON TRACTOR OR TILLER. FALLING OFF CAN CAUSE SERIOUS INJURY OR DEATH BY BEING RUN OVER BY TRACTOR OR TILLER OR BY BEING CUT BY THE ROTATING TILLER BLADES. DO NOT ALLOW CHILDREN ON OR NEAR TILLER OR TRACTOR.

3. TO AVOID INJURY FROM FALLING OBJECTS WEAR HARD HAT, SAFETY GLASSES AND SHOES.





4. BLOCK UP OR SUPPORT MACHINE SECURELY BEFORE PUTTING HANDS OR FEET UNDER, OR WORKING UNDERNEATH LIFTED PARTS TO AVOID CRUSHING INJURY OR EVEN DEATH FROM SUDDEN, INADVERTENT DROPPING. MAKE SURE AREA IS CLEAR BEFORE LOWERING.

5. BEFORE TRANSPORTING, PUT LIFT LEVER IN LIFT (DETENT) POSITION AND FOLLOW TRAFFIC CODES. SLOW DOWN AT NIGHT IN TURNS AND ON HILLSIDES.

6. MAKE SURE THAT SMV SIGN, WARNING LIGHTS AND REFLECTORS ARE CLEARLY VISIBLE.

7. NEVER OPERATE WITH TILLER RAISED OFF GROUND TO REDUCE POSSIBILITY OF INJURY FROM OBJECTS THROWN UNDER TILLER STRUCTURE.

8. BEFORE DISMOUNTING, SECURE TILLER IN TRANSPORT POSITION OR LOWER TO GROUND, STOP PTO, PUT TRACTOR IN PARK OR SET BRAKE, STOP ENGINE AND REMOVE KEY, NEVER MOUNT OR DISMOUNT MOVING VEHICLE TO PREVENT POSSIBLE CRUSHING INJURY OR DEATH.

5. TRANSPORT SAFELY 	6. USE SMV, LIGHTS & REFLECTORS 	7. DO NOT OPERATE WITH TILLER RAISED 	8. MOUNTING & DISMOUNTING 
---	---	---	---

1008

! WARNING

Cancer and Reproductive Harm

www.P65Warnings.ca.gov

WARRANTY INFORMATION:

Read and understand the complete Warranty Statement found in this Manual. Fill out the Warranty Registration Form in full and return it to within 30 Days. Make certain the Serial Number of the Machine is recorded on the Warranty Card and on the Warranty Form that you retain.

LIMITED WARRANTY



Bush Hog warrants to the original purchaser of any new Bush Hog equipment, purchased from an authorized Bush Hog dealer, that the equipment be free from defects in material and workmanship for a period of one (1) year for non-commercial, state and municipalities' use and ninety (90) days for commercial use from date of retail sale. The obligation of Bush Hog to the purchaser under this warranty is limited to the repair or replacement of defective parts.

Replacement or repair parts installed in the equipment covered by this limited warranty are warranted for ninety (90) days from the date of purchase of such part or to the expiration of the applicable new equipment warranty period, whichever occurs later. Warranted parts shall be provided at no cost to the user at an authorized Bush Hog dealer during regular working hours. Bush Hog reserves the right to inspect any equipment or parts which are claimed to have been defective in material or workmanship.

DISCLAIMER OF IMPLIED WARRANTIES & CONSEQUENTIAL DAMAGES

Bush Hog's obligation under this limited warranty, to the extent allowed by law, is in lieu of all warranties, implied or expressed, **INCLUDING IMPLIED WARRANTIES OF MERCHANTABILITY AND FITNESS FOR A PARTICULAR PURPOSE** and any liability for incidental and consequential damages with respect to the sale or use of the items warranted. Such incidental and consequential damages shall include but not be limited to: transportation charges other than normal freight charges; cost of installation other than cost approved by Bush Hog; duty; taxes; charges for normal service or adjustment; loss of crops or any other loss of income; rental of substitute equipment, expenses due to loss, damage, detention or delay in the delivery of equipment or parts resulting from acts beyond the control of Bush Hog.

THIS LIMITED WARRANTY SHALL NOT APPLY:

1. To vendor items which carry their own warranties, such as engines, tires, and tubes.
2. If the unit has been subjected to misapplication, abuse, misuse, negligence, fire or other accident.
3. If parts not made or supplied by Bush Hog have been used in connection with the unit, if, in the sole judgement of Bush Hog such use affects its performance, stability or reliability.
4. If the unit has been altered or repaired outside of an authorized Bush Hog dealership in a manner which, in the sole judgement of Bush Hog, affects its performance, stability or reliability.
5. To normal maintenance service and normal replacement items such as gearbox lubricant, hydraulic fluid, worn blades, or to normal deterioration of such things as belts and exterior finish due to use or exposure.
6. To expendable or wear items such as teeth, chains, sprockets, belts, springs and any other items that in the company's sole judgement is a wear item.

NO EMPLOYEE OR REPRESENTATIVE OF BUSH HOG IS AUTHORIZED TO CHANGE THIS LIMITED WARRANTY IN ANY WAY OR GRANT ANY OTHER WARRANTY UNLESS SUCH CHANGE IS MADE IN WRITING AND SIGNED BY BUSH HOG'S SERVICE MANAGER, 2501 GRIFFIN AVE., SELMA, ALABAMA 36703.



Record the model number, serial number and date purchased. This information will be helpful to your dealer if parts or service are required.

MODEL NUMBER _____

SERIAL NUMBER _____

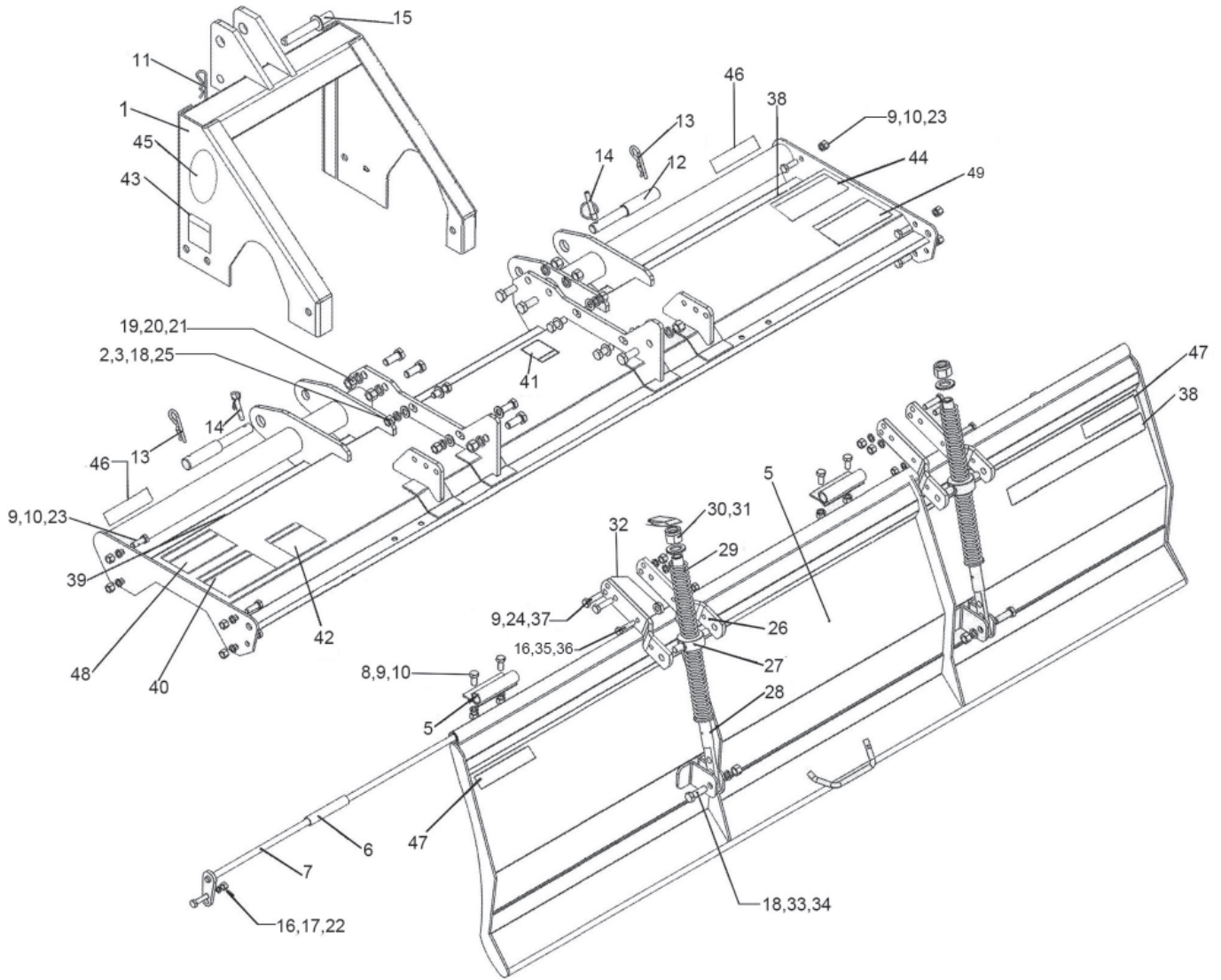
DATE OF RETAIL SALE _____

MAKE CERTAIN THE WARRANTY
HAS BEEN FILED WITH BUSH HOG
SELMA, ALABAMA

TABLE OF CONTENTS
RTXG SERIES ROTARY TILLERS
MODELS
RTX85G - S/N 10444 & Above
RTX92G - S/N 10723 & Above

Frame, Hitch and Tailgate	46A-1-1, 46A-1-2
Gearbox and Support Tubes	46A-1-3, 46A-1-4
Tiller Drives and Rotor Parts.....	46A-1-5, 46A-1-6
Driveshaft Assembly	46A-2-1
Slip Clutch Complete.....	46A-2-2
Decals.....	46A-3-1

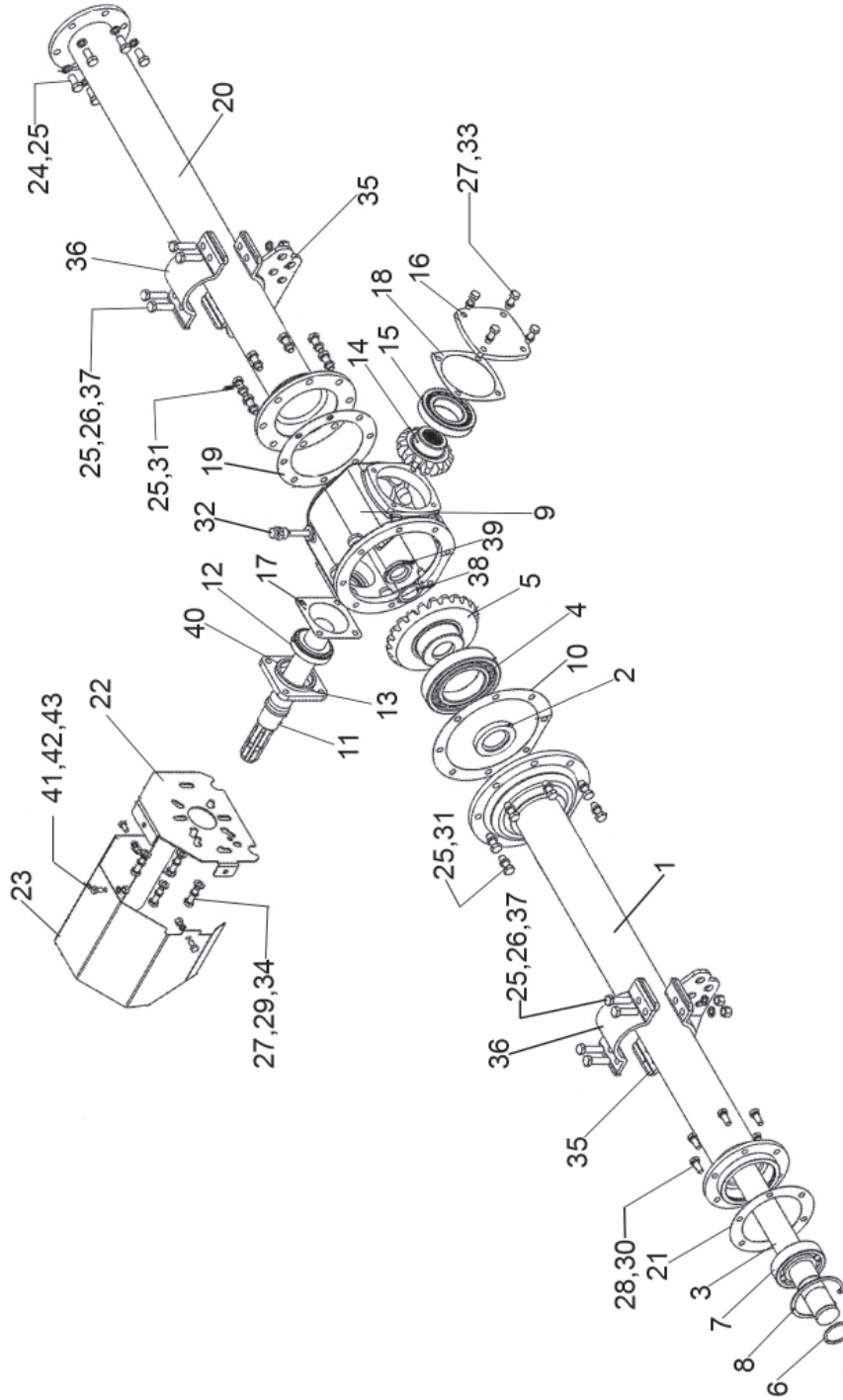
FRAME, HITCH and TAILGATE



FRAME, HITCH and TAILGATE

Item No.	Part No.	Description	Qty.	Item No.	Part No.	Description	Qty.
1	50077318	"A" Frame	1	26	50084049	Bracket, Tailgate Spring	4
2	44431BH	Self-Locking Nut M14 x 1.5	4	27	50084050	Spring, Bushing	2
3	44396BH	Bolt HH M14 x 1.5 x 40	4	28	50084051	Rod, Spring	2
4	50084036	Tailgate - RTX85G	1	29	50084052	Spring, Tailgate	4
	50084158	Tailgate - RTX92G	1	30	50084053	Flatwasher, M24	2
5	50075858	Hinge - Tailgate	2	31	50074022	Locknut, M24 x 1.5	2
6	50076134	Rod - Tube - Nylon	2	32	50084055	Spacer, Tailgate Bracket	2
7	50076133	Rod Tailgate (Cut to Fit)	2	33	44495BH	Bolt HH, M14 x 1.5 x 45	2
8	44204BH	Bolt M12 x 1.75 x 25	4	34	44234BH	Nut, M14 x 1.5	2
9	44200BH	Lockwasher, M12	20	35	44345BH	Bolt HH, M10 x 1.25 x 45	2
10	44244BH	Nut, M12 x 1.75	12	36	44298BH	Nut, M10 x 1.25	2
11	50073976	"R" Clip 4	1	37	44343	Bolt HH, M12 x 1.25 x 45	4
12	50076143	Lower Hitch Pin, Cat 1 & 2	2	38	50083388	Decal, BH 3.35" x 22.00"	2
13	50084041	"R" Clip 6	2	39	50075822	Decal, Model RTX85G	1
14	50076144	Lynch Pin, M10	2		50075823	Decal, Model RTX92G	1
15	50073977	Top Hitch Pin Cat 1	1	40	D898	Decal, Danger Thrown Object	1
16	44198	Lockwasher, M10	4	41	D546	Decal, Danger Guard Missing	1
17	44342	Nut, M10 x 1.5	2	42	D628	Decal, Danger Crushing Haz.	1
18	44233BH	Lockwasher, M14	6	43	D547	Decal, Danger	1
19	44808BH	Bolt HH, M16 x 1.5 x 40	6	44	D1010	Decal, Danger Entanglement	1
20	19486	Lockwasher, M16	6	45	50076462	Decal, Tiller Gear 2	1
21	44853BH	Nut, M16 x 1.5	6	46	50031212	Reflector, Amber 2" x 9"	2
22	44535	Bolt HH, M10 x 1.5 x 40	2	47	50031214	Reflector, Red 2" x 9"	2
23	44281BH	Bolt HH, M12 x 1.75 x 30	12	48	D859	Decal, Genuine Parts Warning	1
24	44869BH	Nut, M12 x 1.25	4	49	D829	Decal, Danger Multilingual	1
25	44263	Flatwasher, M14	4				

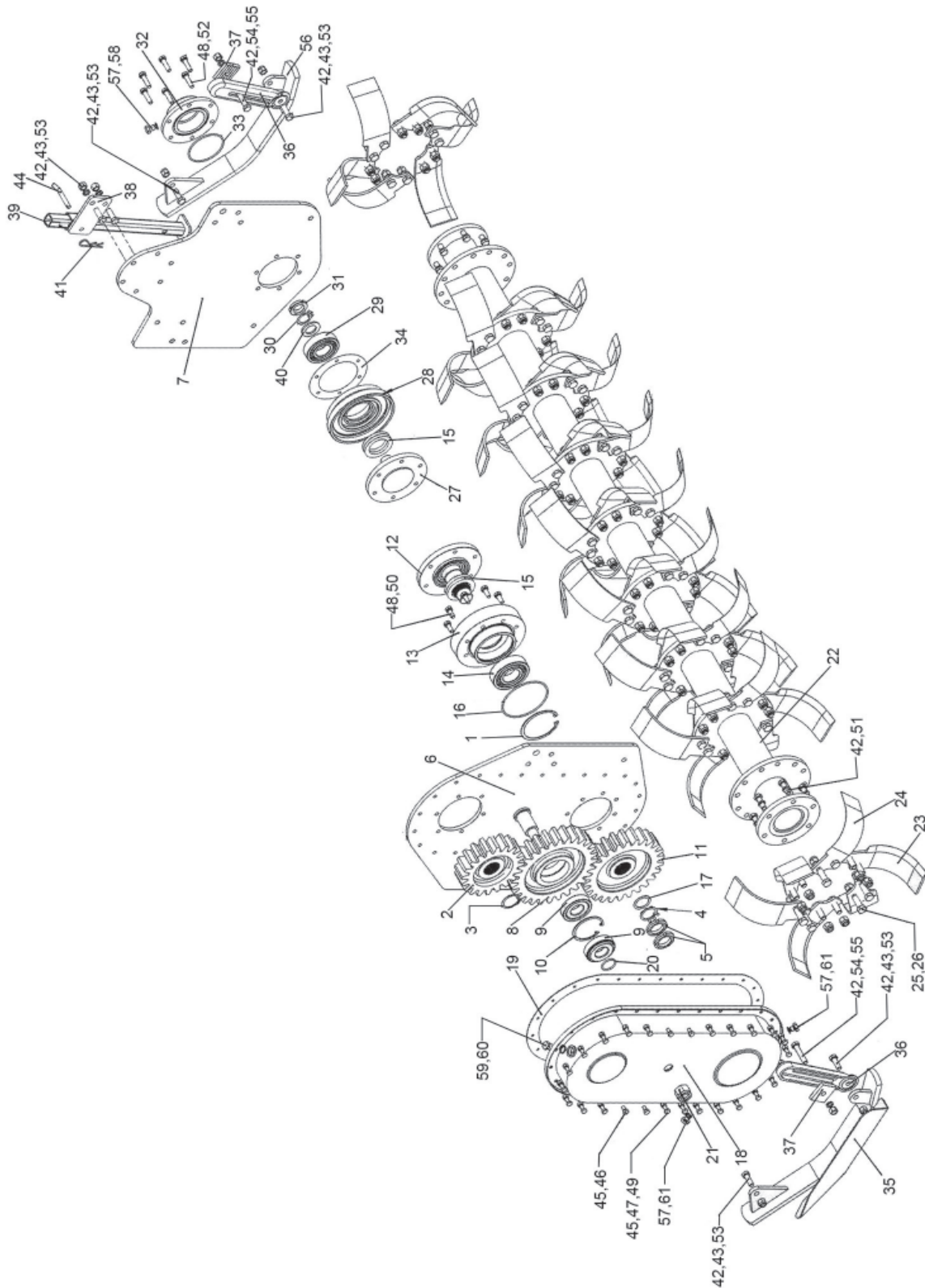
GEARBOX and SUPPORT TUBES



GEARBOX and SUPPORT TUBES

Item No.	Part No.	Description	Qty.	Item No.	Part No.	Description	Qty.
1	50084056	Driveshaft, Tube Housing LH - RTX85G	1	21	50075847	Gasket, Drive Shaft	1
	50084156	Driveshaft, Tube Housing LH - RTX92G	1	22	50075834	Shield Support, Gearobx	1
2	50077328	Oil Seal, M45 x 80 12	1	23	50075833	Shield, Gearbox	1
3	50076100	Driveshaft - RTX85G	1	24	44204BH	Bolt, M12 x 1.75 x 25	6
	50076101	Driveshaft - RTX92G	1	25	44200BH	Lockwasher, M12	30
4	50077329	Bearing 6217	1	26	44869BH	Nut, M12 x 1.25	8
5	50077330	Ring Gear	1	27	44198	Lockwasher, M10	8
6	50075869	Gasket Drive Side Top Gear	1	28	44342	Nut, M10 x 1.5	6
7	50075868	Bearing	1	29	44489BH	Bolt HH M10 x 1.5 x 35	4
8	50076112	Snap Ring, Internal, M100	1	30	44340BH	Bolt HH M10 x 1.5 x 25	6
9	50077323	Housing, Gearbox	1	31	44334BH	Bolt HH, M12 x 1.25 x 35	16
10	50077332	Gasket, Gearbox Left Side	1	32	50073998	Gearbox Oil Plug	1
11	50077320	Input Shaft	1	33	44202	Bolt HH M10 x 1.5 x 30	4
12	50077322	Bearing 30208	1	34	701512C	Flatwasher, M10 ZP	4
13	50077319	Cap, Front Gearbox	1	35	50084047	Clamp, Lower	2
14	50077324	Pinion Gear	1	36	50084048	Clamp, Upper	2
15	50077325	Bearing 30212	1	37	44330BH	Bolt HH, M12 x 1.25 x 40	8
16	50077327	Gearbox Cap	1	38	50076109	Snap Ring, External, M35	1
17	50077321	Gasket, Input Shaft	1	39	50076108	Nut, M36 x 1.5	1
18	50075837	Gasket, Shim, Input Cap	1	40	50075838	Oil Seal, M40 x 65 x 08	1
19	50077331	Gasket, Gearbox Right Side	1	41	44311BH	Lockwasher, M08	3
20	50084057	Driveshaft, Tube Housing RH - RTX85G	1	42	44316BH	Bolt HH M08 x 1.25 x 16	3
	50084157	Driveshaft, Tube Housing RH - RTX92G	1	43	44185BH	Locknut, M08	3

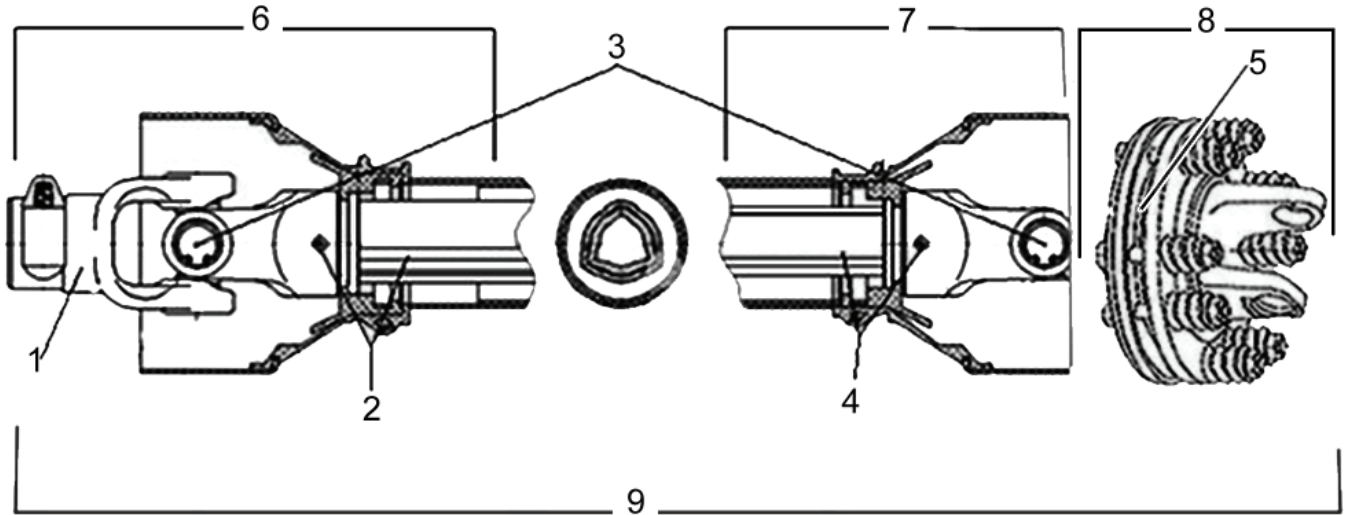
TILLER DRIVES and ROTOR PARTS



TILLER DRIVES and ROTOR PARTS

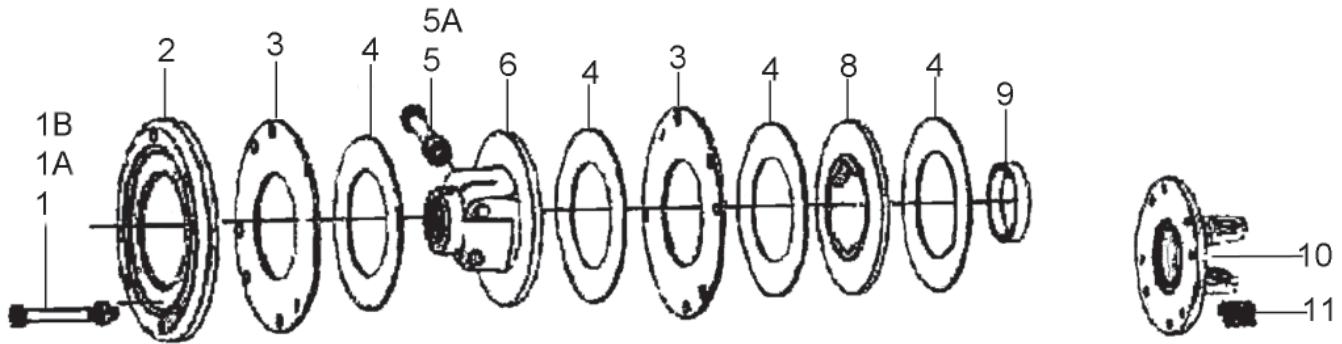
Item No.	Part No.	Description	Qty.	Item No.	Part No.	Description	Qty.
1	50076112	Snap Ring, Internal, M100	1	33	50076126	O-Ring, M92 x 3.55	1
2	50075866	Top Gear	1	34	50076119	Gasket, Rotor	1
3	50075865	Snap Ring, External, M45	1	35	50084040	Skid Weldment, LH	1
4	50076109	Snap Ring, External, M35	3	36	50075860	Skid Adjustment Bracket	2
5	50076108	Nut, M36 x 1.5	2	37	50077042	Skid Adjustment Stop	2
6	50076103	Side Panel, LH	1	38	50077045	Bracket Stand	1
7	50076120	Side Panel, RH	1	39	50077044	Stand	1
8	50076107	Idler Gear	1	40	50076125	Flatwasher, M30	1
9	70801	Bearing 30307	2	41	50074003	"R" Clip 3	1
10	50076106	Snap Ring, Internal, M90	1	42	44200BH	Lockwasher, M12	16
11	50076111	Gear Bottom	1	43	44244BH	Nut, M12 x 1.75	6
12	50076117	Rotor Support Shaft, LH	1	44	50074004	Pin	1
13	50076115	Bearing Support, LH	1	45	44311BH	Lockwasher, M08	27
14	50076113	Bearing, B6309	1	46	44316BH	Bolt HH M08 x 1.25 x 16	4
15	50076116	Oil Seal, M76 x 53.5 x 8.5	2	47	44185BH	Locknut, M08	19
16	50076114	O-Ring M122 x 3.55	1	48	44342	Nut, M10 x 1.5	14
17	50076110	Flatwasher, M36	1	49	45299BH	Bolt HH, M08 x 1.25 x 25	23
18	50075862	Side Drive Cover	1	50	44340BH	Bolt HH, M10 x 1.5 x 25	8
19	50076102	Gasket, Side Gear Case	1	51	50084042	Bolt HH M12 x1.25 x 35 G10.9	6
20	50076104	O-Ring, M35 x 5.5	1	52	44535	Bolt HH M10 x 1.5 x 40	6
21	50074022	Locknut, M24 x 1.5	1	53	44281BH	Bolt HH M12 x 1.75 x 30	6
22	50076130	Rotor - RTX85G	1	54	44901BH	Bolt HH M12 x 1.25 x 60	2
	50076131	Rotor - RTX92G	1	55	44869BH	Nut, M12 x 1.25	2
23	50076128	Blade, Left	30/33	56	50073976	Skid Weldment, RH RTX85G	1
24	50076129	Blade, Right	30/33		50076121	Skid Weldment, RH RTX92G	1
25	44431BH	Self-Locking Nut M14 x1.5	120/132	57	50084044	Copper Washer, M12	3
26	44396BH	Bolt HH M14 x 1.5 x 40	120/132	58	50084045	Bolt HH, M12 x 1.25 x 16	1
27	50076122	Rotor Support Shaft, RH	1	59	50084046	Oil Plug Vented	1
28	50076123	Bearing Support	1	60	44308	Flatwasher, M16	1
29	50076124	Bearing 6308	1	61	50077048	Oil Plug, M12 x 1.25	2
30	50073987	Snap Ring, Ext. M30	1				
31	50077335	Spanner Nut, M30 x 1.5	1				
32	50076127	End Cap, Rotor Right Side	1				

DRIVESHAFT ASSY.



Item No.	Part No.	Description	Qty.
1	50076153	Yoke Assy. PTO	1
2	50076152	Yoke and Tube (Female - Tractor End)	1
3	50076151	Cross and Bearing Kit	2
4	50076150	Yoke and Tube (Male-Implement End)	1
5	50076149	Friction Disc	4
6	50076148	Shielding (Female -TractorEnd)	1
7	50076147	Shielding (Male - Implement End)	1
8	50076146	Slip Clutch Assy.	1
9	50076145	Driveshaft Assembly	1

SLIP CLUTCH, COMPLETE



Item No.	Part No.	Description	Qty.
	50076146	Slip Clutch Compl. 180 MM Clutch, 4 Disc	1
1	44159BH	Bolt, M10 x 1.5 x 100, 8.8	8
1A	50082254	Self-Locking Nut, M10 x 1.5	10
1B	15830	Flatwasher, M10	8
2	50082255	Back Plate	1
3	50082256	Center Friction Plate	2
4	50076149	Friction Disc	4
5	44803	Bolt, M12 x 1.75 x 65(Half Thread-8.8)	8
5A	50082257	Self-Locking Nut, M12 x 1.75	8
6	50082258	Center Female 6 Spline Yoke	1
7	50082259	Bolt, M10 x 1.8 x 90 (Half-thread-8.8)	2
8	50082260	Yoke End Friction Plate	1
9	50082261	Nylon Slip Clutch Ring	1
10	50082262	Slip Clutch Flange Yoke	1
11	50082263	Clutch Spring, 1-3/8" Long	8

DECALS and LABELS

⚠ DANGER

TO AVOID DEATH OR SERIOUS INJURY FROM DRIVELINE CONTACT, DRIVELINE SEPARATION OR PTO STUB SHAFT FAILURE:

- STOP, LOCK and LISTEN for rotating motion before approaching implement.
- STAY AWAY and KEEP hands, feet and body AWAY from driveline & rotating parts until all moving elements have stopped.
- ALWAYS shut off PTO before dismounting.
- DO NOT operate if PTO shields are damaged or missing.
- PUSH AND PULL on yoke until collar clicks and locks yoke in place.
- CHECK driveline guards for free rotation and sufficient overlap to avoid unshielded areas.
- DO NOT USE PTO ADAPTER.

⚠ WARNING

OPERATE THIS MACHINE AT
540 RPM
TRACTOR PTO SPEED ONLY.

Overspeeding PTO may cause component failure resulting in bodily injury.
TRACTOR PTO ROTATION: CLOCKWISE

D547

1

⚠ WARNING

TO AVOID DEATH OR SERIOUS INJURY:

- ONLY use genuine Bush Hog replacement parts, which have been validated and tested to use on Bush Hog equipment by the manufacturer.
- The equipment manufacturer cannot verify the material or structural integrity of third-party supplied non-genuine replacement parts.
- Using non-genuine parts can result in the part failing, creating hazardous conditions for operator and bystanders.

Contact local dealer or Bush Hog about repair parts at:
2501 Griffin Ave., Selma, AL 36701
Customer Service: 800-363-0096
Email: contactus@bushhog.com

www.algqr.com/bpm

⚠ WARNING

Cancer and Reproductive Harm
www.P65Warnings.ca.gov

D859

5

RTX85G

RTX92G



BUSH HOG®

9

10

11

⚠ PELIGRO **⚠ DANGER**

Si no puede leer inglés: antes de poner en funcionamiento este equipo, solicite que alguien le traduzca los mensajes de seguridad o vaya al sitio web para consultar los mensajes de seguridad y las etiquetas ya traducidos.

Si vous ne pouvez pas lire l'anglais : avant d'utiliser l'équipement, demandez à une personne de vous traduire les messages de sécurité ou allez sur le site Internet pour voir la traduction des autocollants et des messages de sécurité.

El Manual del Operador Seguridad vídeo Manual de l'Opérateur

www.algqr.com/bfs www.algqr.com/avs www.algqr.com/bff

2

⚠ PERIGO **⚠ GEFAHR**

Caso você não leia inglês: antes de operar o equipamento, peça para alguém traduzir as mensagens de segurança ou visite a web e obtenha tais mensagens ou os decalques traduzidos.

Falls Sie nicht Englisch sprechen; Bevor Sie die Geräte in Betrieb nehmen, bitten Sie eine Englisch sprechende Person darum, Ihnen die Sicherheitsmeldung zu übersetzen, oder besuchen Sie die Website; dort finden Sie übersetzte Aufkleber und Sicherheitsmeldungen.

Manual do Operador Benutzerhandbuch

www.algqr.com/bfp D829 www.algqr.com/bfg

6

⚠ DANGER

CRUSHING HAZARD AND PINCH POINTS

TO AVOID DEATH OR SERIOUS INJURY:

- KEEP AWAY from moving machinery parts that can pinch, crush or fall.

D628

⚠ DANGER

D546

GUARD MISSING
To Avoid Death Or Serious Injury Do Not Operate

3

⚠ DANGER

THROWN OBJECT HAZARD

TO AVOID DEATH OR SERIOUS INJURY:
DO NOT OPERATE if Thrown Object Shielding is damaged or missing.

- Maintain Deflectors in good condition.
- Inspect Deflectors frequently.

MAINTAIN Thrown Object Shielding

HERE

Deflector

D898

4



7

⚠ DANGER **⚠ DANGER**

ENTANGLEMENT HAZARD

TO AVOID DEATH OR SERIOUS INJURY:

- DO NOT operate without guards in place and in good condition. PTO and gearbox guarding are SUBJECT TO WEAR.
- STAY AWAY and KEEP hands, feet and body AWAY from rotating blades, drivelines and parts that continue to move after power shut-off. WAIT until all moving elements have stopped.
- ALWAYS REPLACE GUARDS that have been removed for service or maintenance.
- STOP, LOCK and LISTEN for rotating motion before approaching implement.
- DO NOT STEP ON drivelines or guards.

TO AVOID DEATH OR SERIOUS INJURY:

- READ AND UNDERSTAND the provided Operator's Manuals, safety signs and information decals for tractor and implement before operating equipment.
- CONTACT DEALER immediately if you do not have manuals.
- CONTACT DEALER to explain any instructions not fully understood.
- ALWAYS WEAR safety glasses with side shields (marked to comply with ANSI Z87).
- WEAR hard hat, safety shoes and gloves for protection when operating equipment.

www.algqr.com/bfa

D1010

8

Item No.	Part No.	Description	Qty.	Item No.	Part No.	Description	Qty.
1	D547	Decal, Danger	1	7	50076462	Decal, Gear Driven	1
2	D829	Decal, Danger Multilingual	1	8	D1010	Decal, Entanglement	1
3	D546	Decal, Danger, Guard Missing	1	9	50075822	Decal, Model RTX85G	1
4	D898	Decal, Danger Thrown Object	1	10	50075823	Decal, Model RTX92G	1
5	D859	Decal, Genuine BH Parts	1	11	50083388	Bush Hog Logo	2
6	D628	Decal, Crushing Hazard	1				



BUSH HOG®

2501 Griffin Ave.
Selma, AL. 36703