

BUSH HOG®

RTXG SERIES ROTARY TILLERS

Models
RTX85G

S/N 10443 & Below

RTX92G

S/N 10722 & Below

Revised 10/23

PARTS MANUAL SECTION 46



An Operator's Manual was shipped with the equipment. The Operator's Manual is an integral part of the safe operation of this machine and must be maintained with the unit at all times. **READ, UNDERSTAND, and FOLLOW** the Safety and Operation Instructions contained in this manual before operating the equipment. If the Operator's Manual is not with the equipment, contact your dealer or Bush Hog to obtain a copy before operating the equipment.

Safety Video

Important Operating and Safety Instructions are found in the Mower Safety Video that can be instantly accessed on the Internet at: www.algqr.com/bve



www.algqr.com/bve



BUSH HOG®

2501 Griffin Ave.

Selma, Al. 36703

Parts Ordering 1-800-304-2836

www.bushhog.com

ATENCIÓN!

LEA EL INSTRUCTIVO

Si No Lee Ingles, Pida Ayuda a Alguien
Que Si Lo Lea Para Que le Traduzca las
Medidas de Seguridad.



A MEMBER OF THE
ALAMO GROUP
ALWAYS ON THE CUTTING EDGE®

© 2016 Alamo Group Inc.

PARTS ORDERING GUIDE

The following instructions are offered to help eliminate needless delay and error in processing purchase orders for the equipment in this section.

1. The Parts Section is prepared in logical sequence and grouping of parts that belong to the basic machine featured in this manual. Part Numbers and Descriptions are given to help locate the parts and quantities required.
2. The Purchase Order must include the name and address of the person or organization ordering the parts, who should be charged, and if possible, the serial number of the machine for which the parts are ordered.
3. The Purchase Order must clearly list the quantity of each part, the complete and correct part number (be sure to include all periods), and the basic name of the part.
4. The Manufacturer reserves the right to substitute parts where applicable.
5. Some parts are unlisted items which are special production items not normally stocked and are subject to special handling. Request a quotation for such parts before sending a Purchase Order.
6. The Manufacturer reserves the right to change prices without prior notice.



For maximum safety and to guarantee optimum product reliability, always use genuine **BUSH HOG** Parts. The use of inferior replacement parts may cause premature or catastrophic failure which could result in serious injury or death. Direct any questions regarding parts to:

BUSH HOG
2501 Griffin Ave.
Selma, AL. 36703
www.bushhog.com
Contact Us
1-800-304-2836



BUSH HOG®

To The Owner/Operator/Dealer




All implements with moving parts are potentially hazardous. There is no substitute for a cautious, safe-minded operator who recognizes the potential hazards and follows reasonable safety practices. The manufacturer has designed this implement to be used with all its safety equipment properly attached to minimize the chance of accidents.

BEFORE YOU START!

Read the safety messages on the implement and shown in your manual. Observe the rules of safety and common sense!

! DANGER

FAILING TO FOLLOW SAFETY MESSAGES AND OPERATING INSTRUCTIONS CAN CAUSE SERIOUS BODILY INJURY OR EVEN DEATH TO OPERATOR AND OTHERS IN THE AREA.

1. 	2. SEAT BELTS, ROPS NO RIDERS. 	3. SAFETY SHOES, HARD HAT, SAFETY GLASSES 	4. 
--	--	--	--

1. READ OPERATOR'S MANUAL CAREFULLY AND PAY ATTENTION TO SAFETY DECALS FOR TRACTOR AND TILLER THOROUGHLY TO AVOID MISUSE, ABUSE AND ACCIDENTS. PRACTICE BEFORE OPERATING.

2. OPERATE ONLY WITH ROPS AND FASTENED SEAT BELT TO AVOID INJURY AND POSSIBLE CRUSHING DEATH FROM OVERTURNING. DO NOT ALLOW RIDERS ON TRACTOR OR TILLER. FALLING OFF CAN CAUSE SERIOUS INJURY OR DEATH BY BEING RUN OVER BY TRACTOR OR TILLER OR BY BEING CUT BY THE ROTATING TILLER BLADES. DO NOT ALLOW CHILDREN ON OR NEAR TILLER OR TRACTOR.

3. TO AVOID INJURY FROM FALLING OBJECTS WEAR HARD HAT, SAFETY GLASSES AND SHOES.





4. BLOCK UP OR SUPPORT MACHINE SECURELY BEFORE PUTTING HANDS OR FEET UNDER, OR WORKING UNDERNEATH LIFTED PARTS TO AVOID CRUSHING INJURY OR EVEN DEATH FROM SUDDEN, INADVERTENT DROPPING. MAKE SURE AREA IS CLEAR BEFORE LOWERING.

5. BEFORE TRANSPORTING, PUT LIFT LEVER IN LIFT (DETENT) POSITION AND FOLLOW TRAFFIC CODES. SLOW DOWN AT NIGHT IN TURNS AND ON HILLSIDES.

6. MAKE SURE THAT SMV SIGN, WARNING LIGHTS AND REFLECTORS ARE CLEARLY VISIBLE.

7. NEVER OPERATE WITH TILLER RAISED OFF GROUND TO REDUCE POSSIBILITY OF INJURY FROM OBJECTS THROWN UNDER TILLER STRUCTURE.

8. BEFORE DISMOUNTING, SECURE TILLER IN TRANSPORT POSITION OR LOWER TO GROUND, STOP PTO, PUT TRACTOR IN PARK OR SET BRAKE, STOP ENGINE AND REMOVE KEY, NEVER MOUNT OR DISMOUNT MOVING VEHICLE TO PREVENT POSSIBLE CRUSHING INJURY OR DEATH.

5. TRANSPORT SAFELY 	6. USE SMV, LIGHTS & REFLECTORS 	7. DO NOT OPERATE WITH TILLER RAISED 	8. MOUNTING & DISMOUNTING 
---	---	---	---

1008

! WARNING

Cancer and Reproductive Harm

www.P65Warnings.ca.gov

WARRANTY INFORMATION:

Read and understand the complete Warranty Statement found in this Manual. Fill out the Warranty Registration Form in full and return it to within 30 Days. Make certain the Serial Number of the Machine is recorded on the Warranty Card and on the Warranty Form that you retain.

LIMITED WARRANTY



Bush Hog warrants to the original purchaser of any new Bush Hog equipment, purchased from an authorized Bush Hog dealer, that the equipment be free from defects in material and workmanship for a period of one (1) year for non-commercial, state and municipalities' use and ninety (90) days for commercial use from date of retail sale. The obligation of Bush Hog to the purchaser under this warranty is limited to the repair or replacement of defective parts.

Replacement or repair parts installed in the equipment covered by this limited warranty are warranted for ninety (90) days from the date of purchase of such part or to the expiration of the applicable new equipment warranty period, whichever occurs later. Warranted parts shall be provided at no cost to the user at an authorized Bush Hog dealer during regular working hours. Bush Hog reserves the right to inspect any equipment or parts which are claimed to have been defective in material or workmanship.

DISCLAIMER OF IMPLIED WARRANTIES & CONSEQUENTIAL DAMAGES

Bush Hog's obligation under this limited warranty, to the extent allowed by law, is in lieu of all warranties, implied or expressed, **INCLUDING IMPLIED WARRANTIES OF MERCHANTABILITY AND FITNESS FOR A PARTICULAR PURPOSE** and any liability for incidental and consequential damages with respect to the sale or use of the items warranted. Such incidental and consequential damages shall include but not be limited to: transportation charges other than normal freight charges; cost of installation other than cost approved by Bush Hog; duty; taxes; charges for normal service or adjustment; loss of crops or any other loss of income; rental of substitute equipment, expenses due to loss, damage, detention or delay in the delivery of equipment or parts resulting from acts beyond the control of Bush Hog.

THIS LIMITED WARRANTY SHALL NOT APPLY:

1. To vendor items which carry their own warranties, such as engines, tires, and tubes.
2. If the unit has been subjected to misapplication, abuse, misuse, negligence, fire or other accident.
3. If parts not made or supplied by Bush Hog have been used in connection with the unit, if, in the sole judgement of Bush Hog such use affects its performance, stability or reliability.
4. If the unit has been altered or repaired outside of an authorized Bush Hog dealership in a manner which, in the sole judgement of Bush Hog, affects its performance, stability or reliability.
5. To normal maintenance service and normal replacement items such as gearbox lubricant, hydraulic fluid, worn blades, or to normal deterioration of such things as belts and exterior finish due to use or exposure.
6. To expendable or wear items such as teeth, chains, sprockets, belts, springs and any other items that in the company's sole judgement is a wear item.

NO EMPLOYEE OR REPRESENTATIVE OF BUSH HOG IS AUTHORIZED TO CHANGE THIS LIMITED WARRANTY IN ANY WAY OR GRANT ANY OTHER WARRANTY UNLESS SUCH CHANGE IS MADE IN WRITING AND SIGNED BY BUSH HOG'S SERVICE MANAGER, 2501 GRIFFIN AVE., SELMA, ALABAMA 36703.



Record the model number, serial number and date purchased. This information will be helpful to your dealer if parts or service are required.

MODEL NUMBER _____

SERIAL NUMBER _____

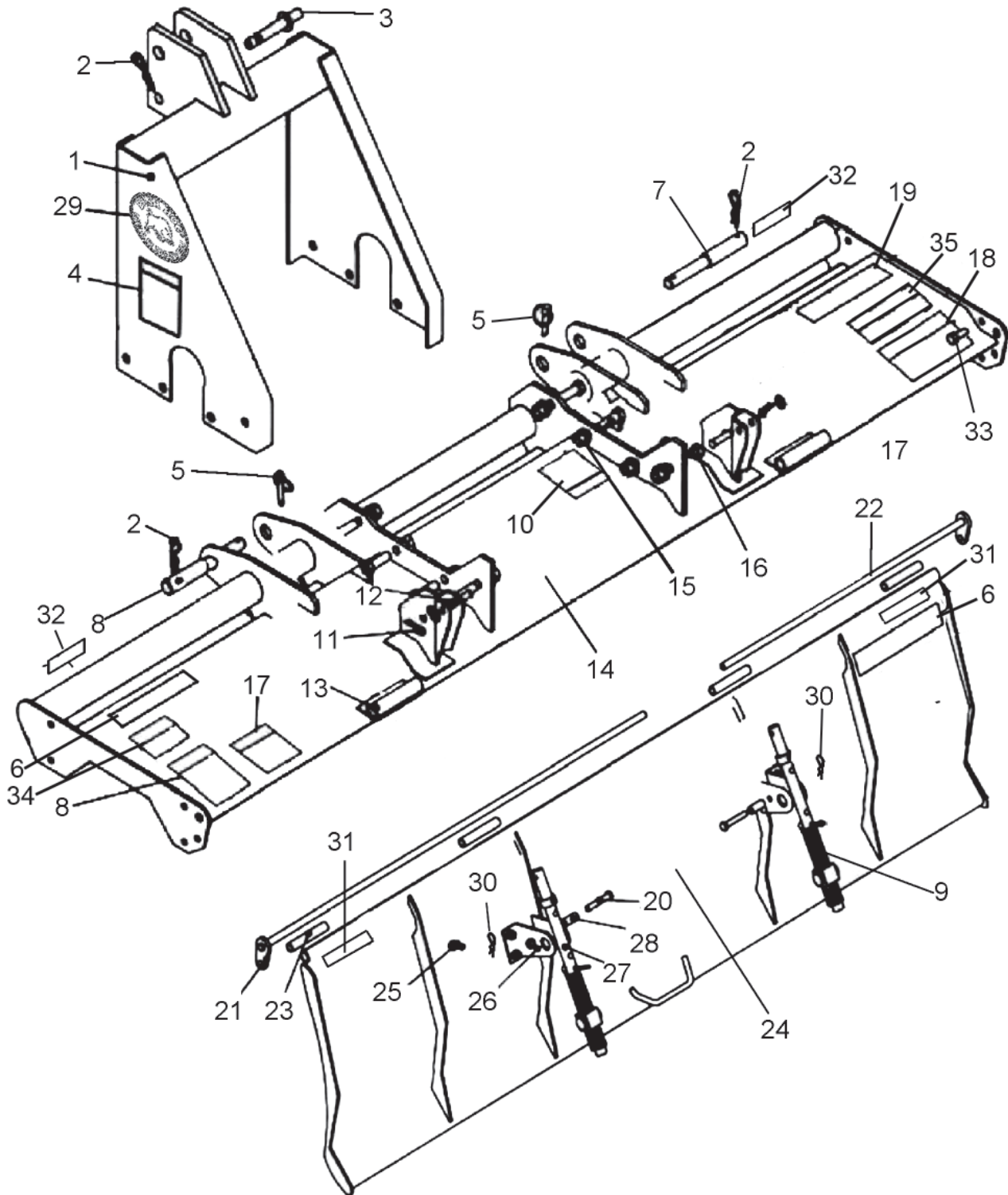
DATE OF RETAIL SALE _____

MAKE CERTAIN THE WARRANTY
HAS BEEN FILED WITH BUSH HOG
SELMA, ALABAMA

TABLE OF CONTENTS
RTXG SERIES ROTARY TILLERS
MODELS
RTX85G & RTX92G

Frame, Hitch and Tailgate	46-1-1, 46-1-2
Gearbox and Support Tubes	46-1-3, 46-1-4
Tiller Drives and Rotor Parts.....	46-1-5, 46-1-6
Driveshaft Assembly	46-2-1
Slip Clutch Complete.....	46-2-2
Decals.....	46-3-1 thru 46-3-2

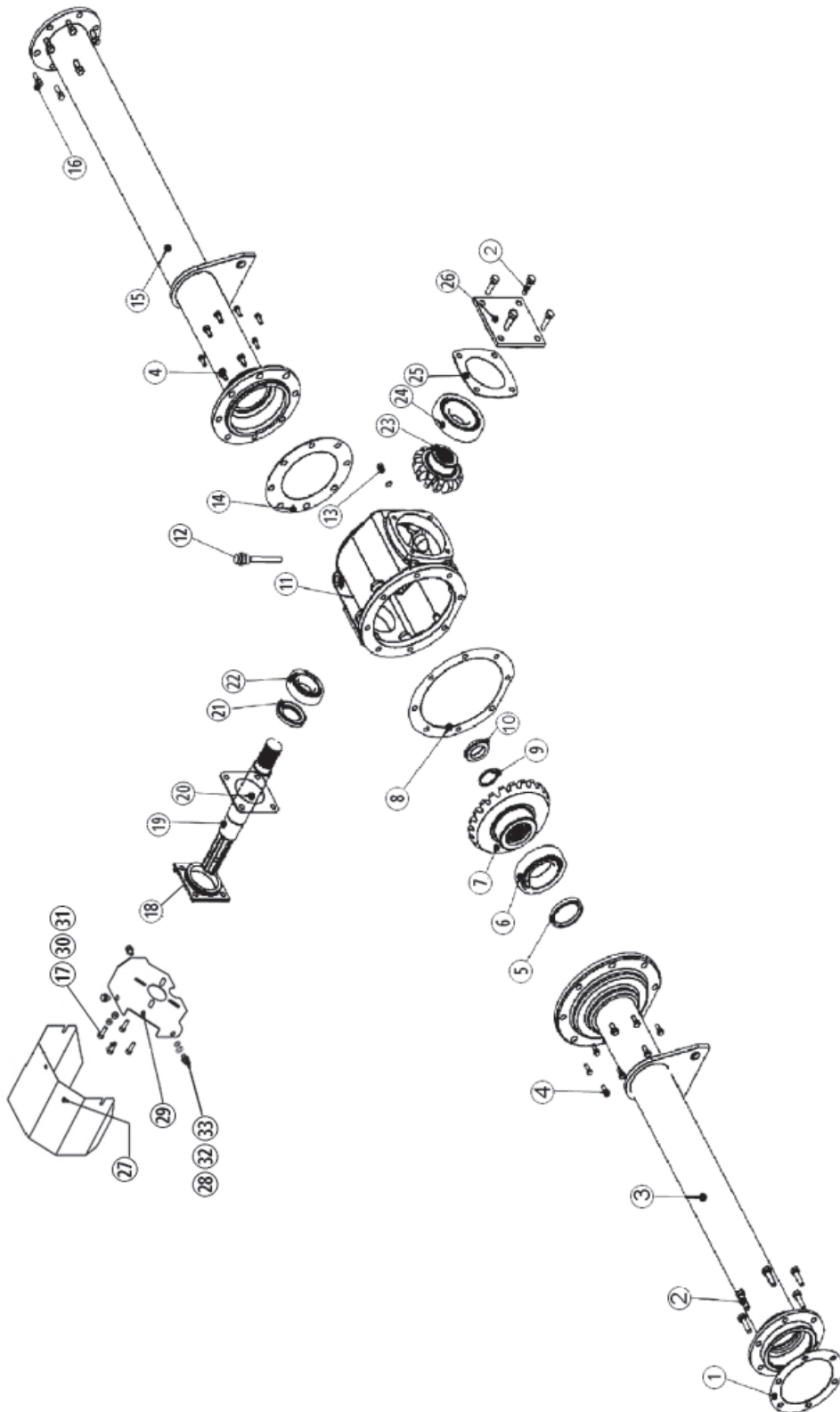
FRAME, HITCH and TAILGATE



FRAME, HITCH and TAILGATE

Item No.	Part No.	Description	Qty.	Item No.	Part No.	Description	Qty.
1	50077318	"A" Frame	1	20	44157	Bolt 12x1.75x70	2
2	50073976	"R" Clip 4mm	3	21	50076132	Rod, Tailgate L.H.RTX85G	1
3	50073977	Hitch Pin - Top Cat. 1	1		50076133	Rod, Tailgate L.H. RTX92G	1
4	D547	Decal Danger	1	22	50076141	Rod, Tailgate R.H. RTX85G	1
5	50076144	Lynch Pin	2		50076142	Rod, Tailgate R.H. RTX92G	1
6	50083388	Decal - Bush Hog Logo	2	23	50076134	Tube, Nylon	1
7	50076143	Hitch Pin, Lower Cat. 1 & 2	2	24	50076135	Tailgate Assy. RTX85G	1
8	D898	Decal, Danger Thrown Object	1		50076136	Tailgate Assy. RTX92G	1
9	50076140	Spring - Tailgate	4	25	44204BH	Bolt 12x1.75x25	10
10	D546	Decal, Danger Guard Missing	1	26	50076137	Bracket, Tailgate Spring	2
11	50074003	"R" Clip	2	27	50076138	Rod, Tailgate Spring	2
12	50075859	Pin - Tailgate Adjust	2	28	50076139	Bushing, Tailgate	2
13	50075858	Hanger - Tailgate	2	29	50076462	Gear Driven Decal	1
14	N/A	Frame	1	30	50080683	Safety Pin	2
15	44103BH	Bolt 16x2x40	6	31	50031214	Reflector, Red, 2 x 9	2
16	44326BH	Bolt 16x2x50	2	32	50031212	Reflector, Amber, 2 x 9	2
17	D628	Decal, Danger	1	33	44281BH	Bolt 12x1.75x35	12
18	D1010	Decal, Danger	1	34	D859	Decal, Genuine BH Parts	1
19	50075822	Decal, Model RTX85G	1	35	D829	Decal, Danger Multilingual	1
	50075823	Decal, Model RTX92G	1				

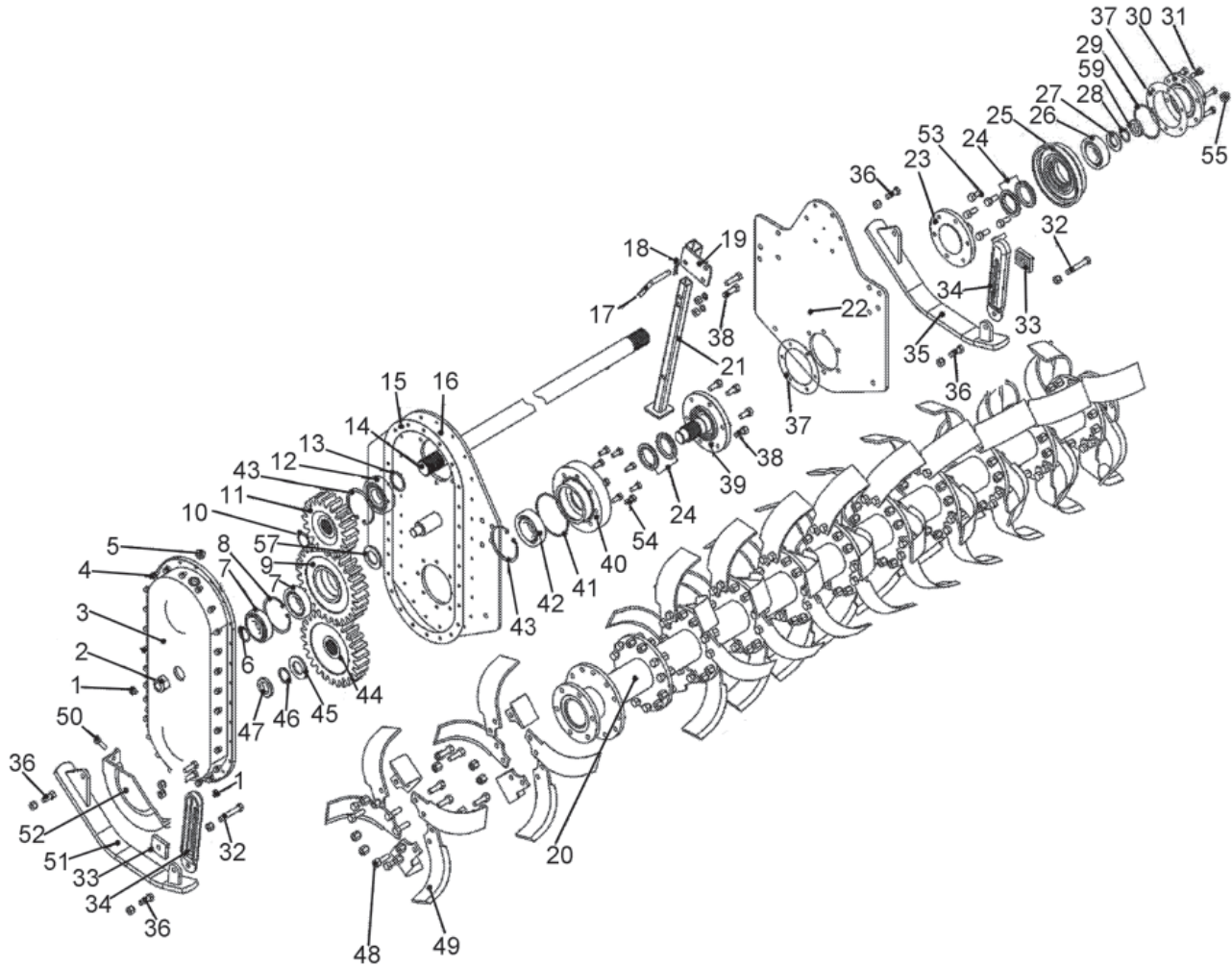
GEARBOX and SUPPORT TUBES



GEARBOX and SUPPORT TUBES

Item No.	Part No.	Description	Qty.
1	50075847	Gasket, Driveshaft	1
2	44340BH	Bolt 10 x 1.5 x 25	10
3	50075848	Driveshaft Housing RTX85G	1
	50075849	Driveshaft Housing RTX92G	1
4	45281BH	Bolt 10 x 1.25 x 25	16
5	50077328	Seal 45x80x12	1
6	50077329	Bearing 6217	1
7	50077330	Ring Gear	1
8	50077332	Gasket, Gearbox Left Side	1
9	50076109	Snap Ring, 35mm	2
10	50076108	Nut 36x1.5	2
11	50077323	Housing, Gearbox	1
12	50073998	Oil Plug & DipStick	1
13	50073999	Oil Plug M14 x 1.5	1
14	50077331	Gasket, Gearbox Right Side	1
15	50075856	Support Tube RTX85G 1	
	50075857	Support Tube RTX92G	1
16	44204BH	Bolt M12x1.75x25	6
17	44390BH	Bolt M10x1.5x20	4
18	50077319	Cap, Front Gerabox	1
19	50077320	Input Shaft	1
20	50077321	Gasket, Input Shaft	1
21	50075838	Oil Seal 40x65x8, Input Shaft	1
22	50077322	Bearing 30208	1
23	50077324	Pinion Gear	1
24	50077325	Bearing 30212	1
25	50077326	Gasket	2
26	50077327	Gearbox Cap-Back	1
27	50075833	Shield - Gearbox	1
28	44316BH	Bolt, 8x1.25x16	
29	50075834	Shield Support - Gearbox	1
30	44198	Lockwasher, M10 ZP	4
31	15830	Flatwasher, 3/8" SAE ZP	4
32	44311BH	Lockwasher, M8 ZP	3
33	44216	Flatwasher, M8 ZP	3

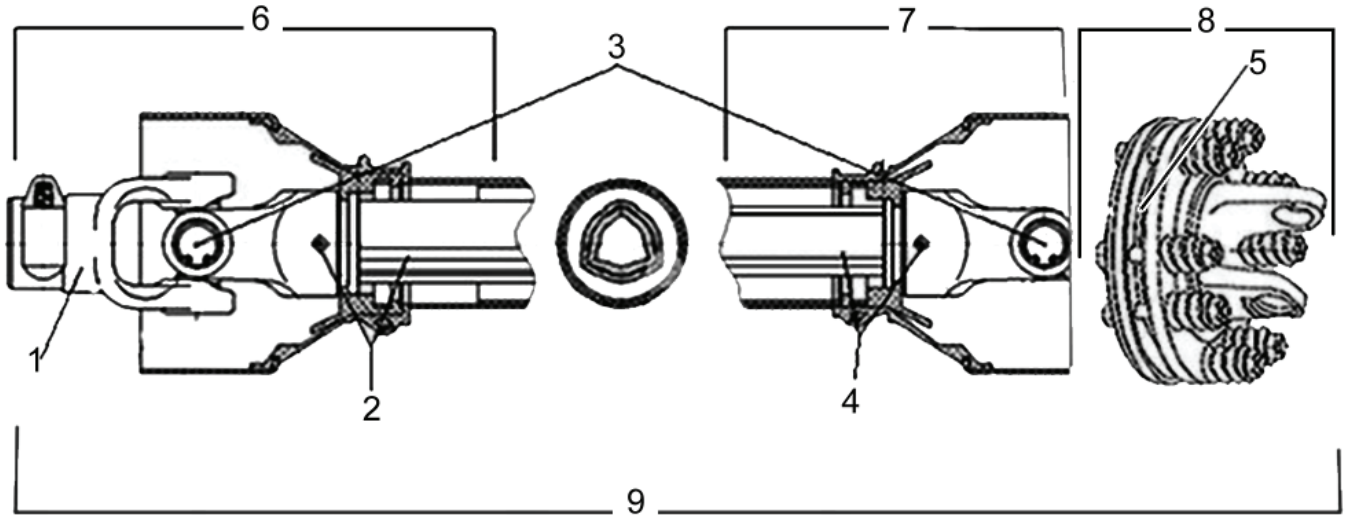
TILLER DRIVES and ROTOR PARTS



TILLER DRIVES and ROTOR PARTS

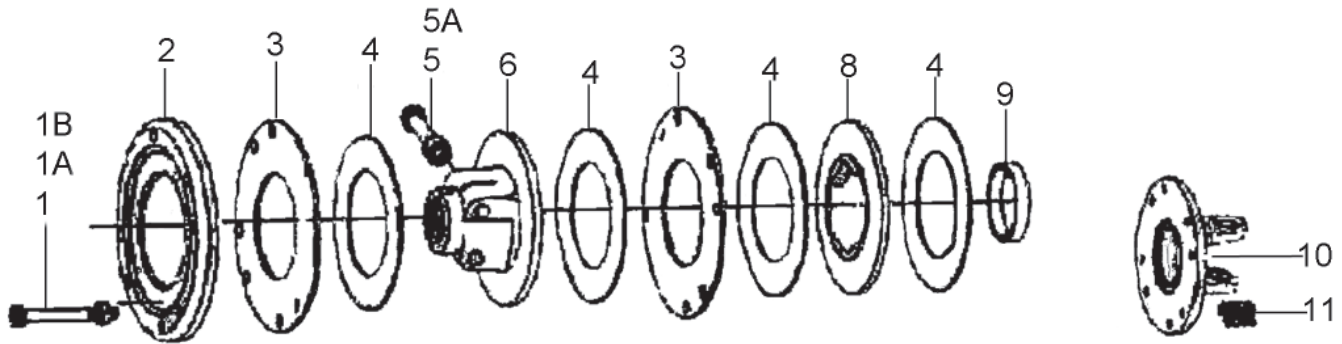
Item No.	Part No.	Description	Qty.	Item No.	Part No.	Description	Qty.
1	50077048	Oil Plug, M12 x 1.125	2	31	44489BH	Bolt 10 x 1.5 x 35	6
2	50074022	Locknut 24mm	1	32	44901BH	Bolt 12 x 1.25 x 60	2
3	50075864	Side Cover	1	33	50077042	Skid Adjustment Stop	2
4	45299BH	Bolt, 8x1.25x25	23	34	50075860	Skid Adjustment Bracket	2
5	50074001	Breather Cap	1	35	50076121	Skid Weldment RH	1
6	50076104	"O" Ring 35 x 5.5	1	36	44281BH	Bolt 12 x 1.75 x 35	10
7	70801	Bearing	2	37	50076119	Gasket	1
8	50076106	Snap Ring 90mm	1	38	44394BH	Bolt 12 x 1.75 x 30	8
9	50076107	Gear, Idler	1	39	50076117	Rotor Support LH	1
10	50075865	Snap Ring 45mm	1	40	50076115	Support, Bearing LH	1
11	50075866	Top Gear	1	41	50076114	"O" Ring 122 x 3.55	1
12	50075868	Bearing	1	42	50076113	Bearing 6305	1
13	50075869	Gasket, Top Gear	1	43	50076112	Snap Ring 100mm	2
14	50076100	Driveshaft RTX85G	1	44	50076111	Bottom Gear	1
	50076101	Driveshaft RTX92G	1	45	50076110	Flatwasher 36mm	1
15	50076102	Gasket, LH Side Gearcase	1	46	50076109	Snap Ring 35mm	2
16	50076103	Side Panel LH	1	47	50076108	Nut 36 x1.5	2
17	50074004	Pin	1	48	44396BH	Bolt 14 x 1.5 x 45	120/132
18	50074003	Clip "R"	1		44431BH	Locknut M14 x1.5	120/132
19	50077045	Bracket, Stand	1	49	50076128	Blade LH	30/33
20	50076130	Rotor Shaft RTX85G	1		50076129	Blade RH	30/33
	50076131	Rotor Shaft RTX92G	1	50	50077050	Bolt 12 x 1.75 x 20	1
21	50077044	Stand	1	51	50075861	Skid Weldment LH	1
22	50076120	Side Panel RH	1	52	50075862	Skid Shield	1
23	50076122	Rotor Support RH	1	53	44202	Bolt, 10 x 1.5 x 30	6
24	50076116	Float Oil Seal	2	54	44340BH	Bolt, 10 x 1.5 x 25	8
25	50076123	Support, Bearing	1	55	50077195	Oil Plug	1
26	50076124	Bearing - 6308	1	56	50075863	Skid Bracket (item not shown)	1
27	50076125	Flatwasher 30mm	1	57	50077334	Spacer	1
28	50073987	Snap Ring 30mm	1	58	50076118	Protector - Right Side (item not shown)	1
29	50076126	"O"Ring 92.5 x 3.55	1	59	50077335	Spanner Nut 30 x 1.5	1
30	50076127	End Cap	1				

DRIVESHAFT ASSY.



Item No.	Part No.	Description	Qty.
1	50076153	Yoke Assy. PTO	1
2	50076152	Yoke and Tube (Female - Tractor End)	1
3	50076151	Cross and Bearing Kit	2
4	50076150	Yoke and Tube (Male-Implement End)	1
5	50076149	Friction Disc	4
6	50076148	Shielding (Female -TractorEnd)	1
7	50076147	Shielding (Male - Implement End)	1
8	50076146	Slip Clutch Assy.	1
9	50076145	Driveshaft Assembly	1

SLIP CLUTCH, COMPLETE



Item No.	Part No.	Description	Qty.
	50076146	Slip Clutch Compl. 180 MM Clutch, 4 Disc	1
1	44159BH	Bolt, M10 x 1.5 x 100, 8.8	8
1A	50082254	Self-Locking Nut, M10 x 1.5	10
1B	15830	Flatwasher, M10	8
2	50082255	Back Plate	1
3	50082256	Center Friction Plate	2
4	50076149	Friction Disc	4
5	44803	Bolt, M12 x 1.75 x 65(Half Thread-8.8)	8
5A	50082257	Self-Locking Nut, M12 x 1.75	8
6	50082258	Center Female 6 Spline Yoke	1
7	50082259	Bolt, M10 x 1.8 x 90 (Half-thread-8.8)	2
8	50082260	Yoke End Friction Plate	1
9	50082261	Nylon Slip Clutch Ring	1
10	50082262	Slip Clutch Flange Yoke	1
11	50082263	Clutch Spring, 1-3/8" Long	8

DECALS and LABELS



Item No.	Part No.	Description	Qty.
1	D898	Decal, Danger Thrown Object	1
2	D546	Decal, Danger, Guard Missing	1
3	D547	Decal, Danger	1
4	50076462	Gear Driven Decal	1
5	D628	Decal, Crushing Hazard	1
6	D1010	Decal, Entanglement	1
7	D859	Decal Genuine BH Parts	1
8	50075822	Decal, Model RTX85G	1
9	50075823	Decal, Model RTX92G	1
10	50083388	Bush Hog Logo	2
11	D829	Decal, Danger Multilingual	1



BUSH HOG®

2501 Griffin Ave.
Selma, AL. 36703